

FOR SALE

5926 GA-HWY 21 RINCON, GA 31326

13,000 SF RETAIL CENTER • 92% LEASED



**CUSHMAN &
WAKEFIELD**

**GILBERT &
EZELLE**

EXECUTIVE SUMMARY

5926 GA Highway 21 is a 12,000 SF free-standing retail center, 92% leased to four tenants. Ideally located in the flourishing commercial district of Rincon, it has excellent frontage and visibility on Highway 21 and is within close proximity to Interstate 95.

ADDRESS	5926 GA-HWY 21 Rincon, GA 31326
SIZE	13,000 SF
LOT SIZE	1.26 acres
% LEASED	92% leased to 4 tenants
ASKING PRICE	\$1,700,000
PRO FORMA CAP RATE	8.7%

For further details or to arrange a tour, please contact the Exclusive Agents at Cushman & Wakefield | Gilbert & Ezelle:



JOHN GILBERT, CCIM

Partner
+1 912 547 4464
jgilbert@gilbertezelle.com

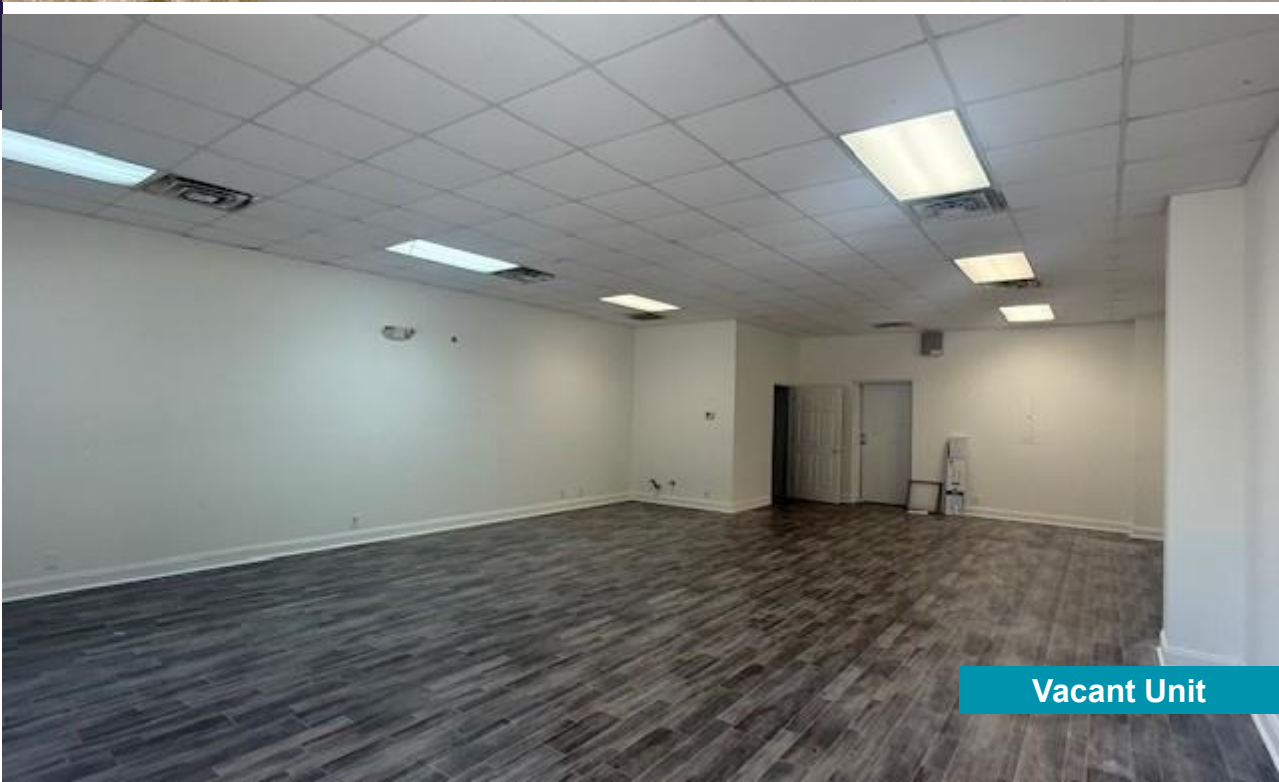


IAN EVANS

Associate
+1 912 704 6203
ievans@gilbertezelle.com

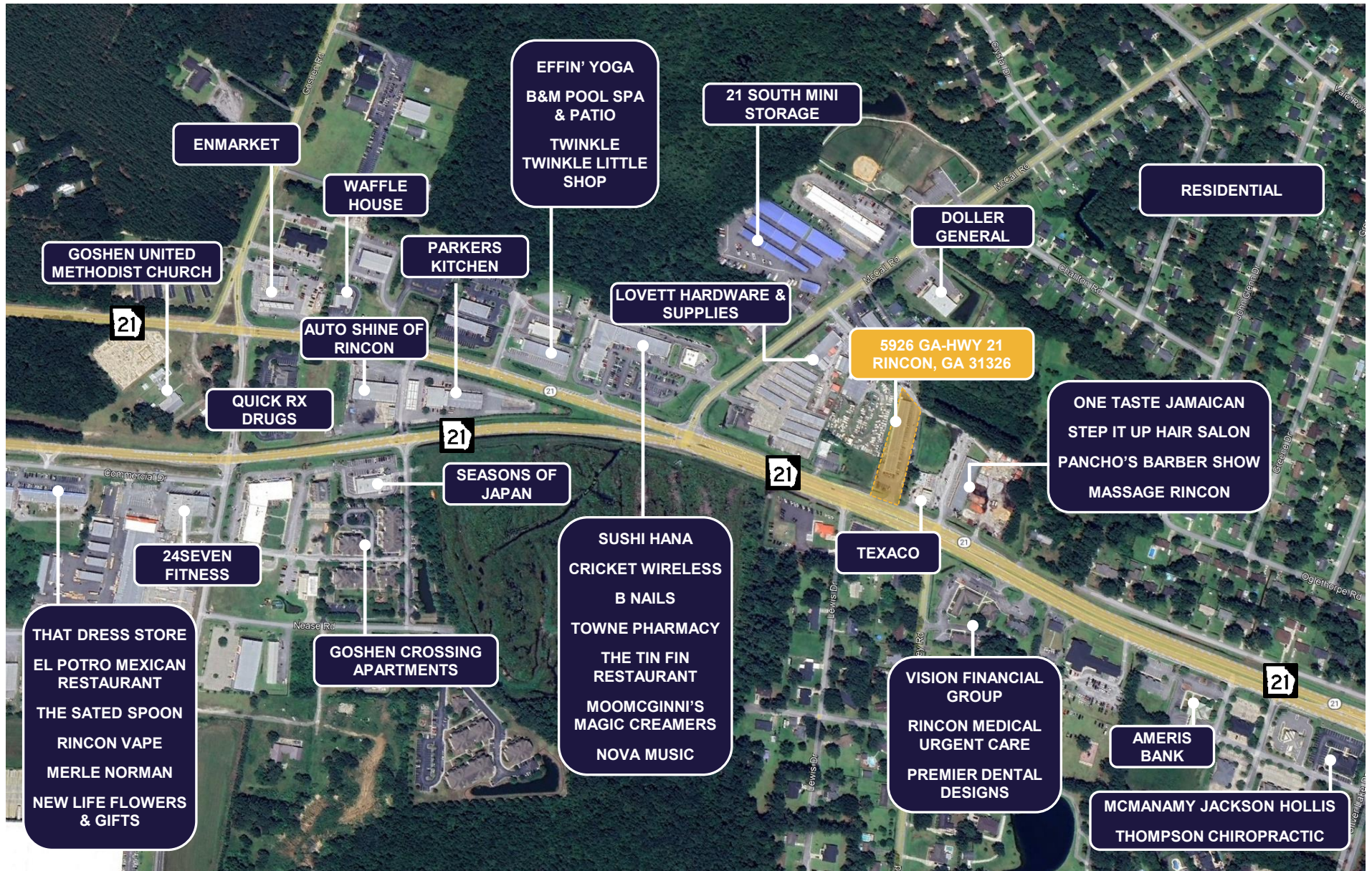


Front Cap

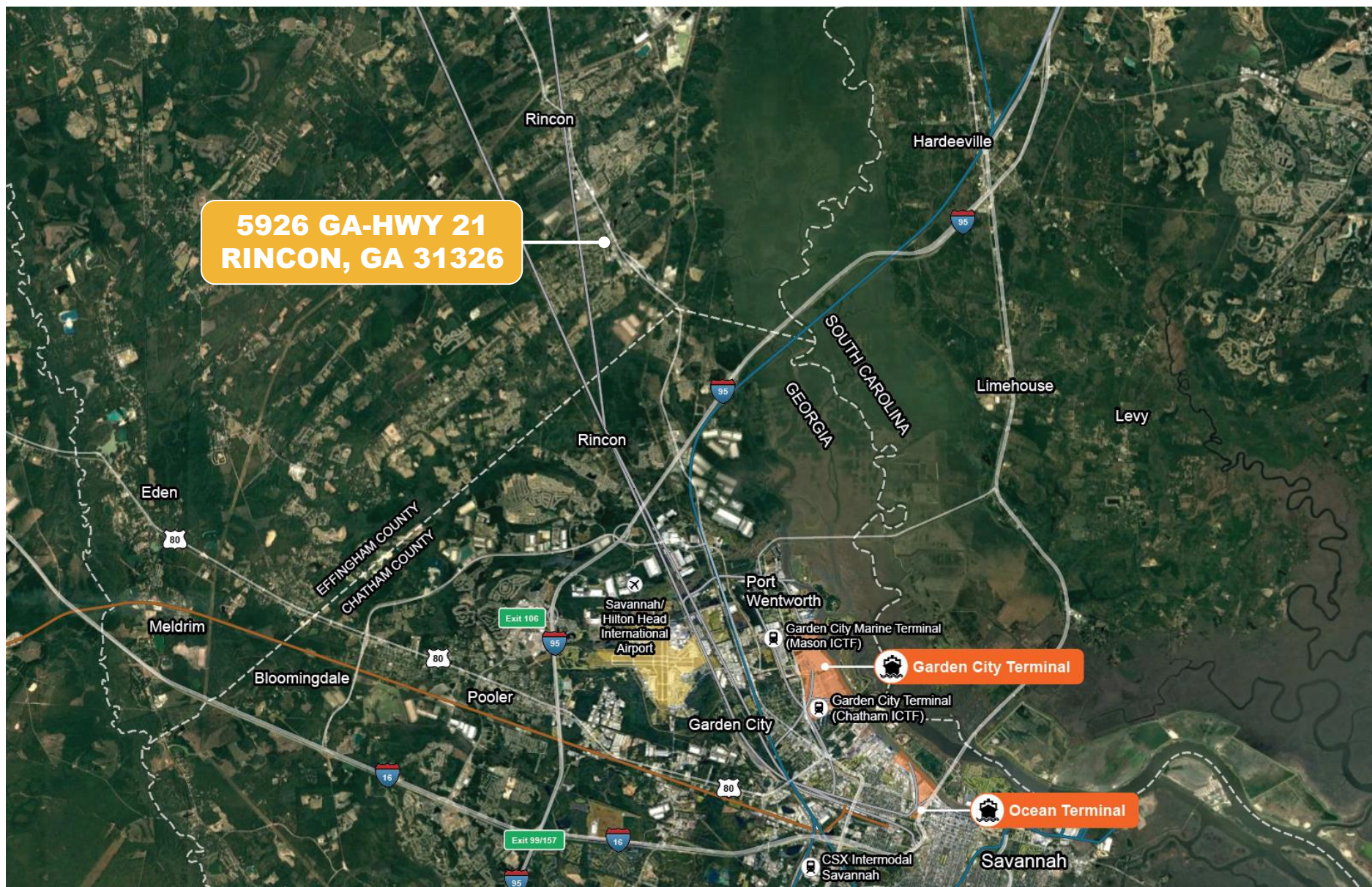


Vacant Unit

HIGH EXPOSURE SITE



REGIONAL LOCATION





FOR SALE

5926 GA-HWY 21 RINCON, GA 31326

MORE INFORMATION:



JOHN GILBERT, CCIM

Partner

+1 912 547 4464

jgilbert@gilbertezelle.com



IAN EVANS

Associate

+1 912 704 6203

ievans@gilbertezelle.com

©2025 Cushman & Wakefield. All rights reserved. The material in this presentation has been prepared solely for information purposes, and is strictly confidential. Any disclosure, use, copying or circulation of this presentation (or the information contained within it) is strictly prohibited, unless you have obtained Cushman & Wakefield's prior written consent. The views expressed in this presentation are the views of the author and do not necessarily reflect the views of Cushman & Wakefield. Neither this presentation nor any part of it shall form the basis of, or be relied upon in connection with any offer, or act as an inducement to enter into any contract or commitment whatsoever. NO REPRESENTATION OR WARRANTY IS GIVEN, EXPRESS OR IMPLIED, AS TO THE ACCURACY OF THE INFORMATION CONTAINED WITHIN THIS PRESENTATION, AND CUSHMAN & WAKEFIELD IS UNDER NO OBLIGATION TO SUBSEQUENTLY CORRECT IT IN THE EVENT OF ERRORS.