



3557 Georgia Ave NW





# HIGHLIGHTS

3557 Georgia Ave NW Washington DC 20010

- Approx. **2,541 SF** (1,671 Ground, 870 LL)
- Hard Corner Space with Excellent Visibility
- Some Existing Infrastructure (HVAC, Walk-In, Hood)
- Outdoor Patio



HOOK X HALL



DISTRICT DOGS



SAFeway

YOGA HEIGHTS

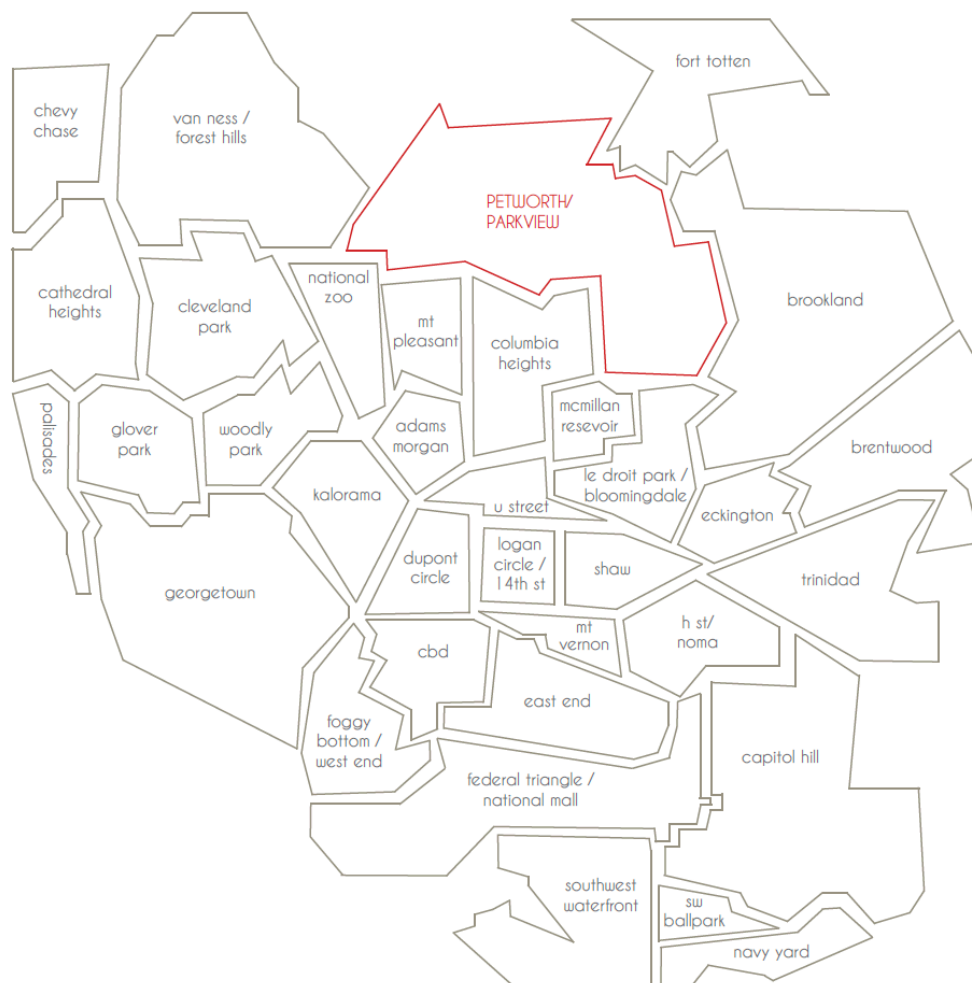


JOSH MILLER  
(202) 360.6435  
jmill@PPGDC.com



# PETWORTH/PARKVIEW

Neighborhood-serving small businesses nestled among residential blocks include award winning restaurants and specialty retailers such as Pom Pom, Slash Run, Loyalty Bookstore, She Loves Me Florist, Cinder BBQ, Timber Pizza, Call Your Mother Bagel, Taqueria Del Barrio, Willow, Fia's Fabulous Finds, and Lulabelle's Sweet Shop.\*



Traffic Counts  
GEORGIA AVE

17,800-  
28,400

Average HH  
Income

\$122k

WALKSCORE  
95

Daily Ridership  
Georgia Ave/Petworth

5,889

Residents within  
10 min car ride

263,700



PETWORTH LIBRARY



CHICKEN



TIMBER PIZZA  
LITTLE FOOD STUDIO  
MENYA HOSAKI



HARDWARE



ROOM 808



DANNIE'S KITCHEN



YES!  
ORGANIC  
MARKET

KANSAS AVE

SHEPHERD ST

SPICE



COMMONWEALTH CANTINA

RANDOLPH ST

SAFEWAY



QUINCY ST

PARK PLACE



Georgia Ave/  
Petworth



CVS  
PHARMACY



FISH IN THE  
NEIGHBORHOOD



LOOKING GLASS LOUNGE



THE AVENUE

THE COUPE



PARK RD

HOOK HALL



MORTON ST



THE MIDLANDS BEER GARDEN  
SWEAT DC  
CALL YOUR MOTHER DELI



REDROCKS  
EL CHUCHO

ODD PROVISIONS

LAMONT ST

SALSA WITH SILVIA  
ST. VINCENT WINE  
DISTRICT DOGS TRAINING



ONCITO CAFE  
FINGERS  
AMPERO

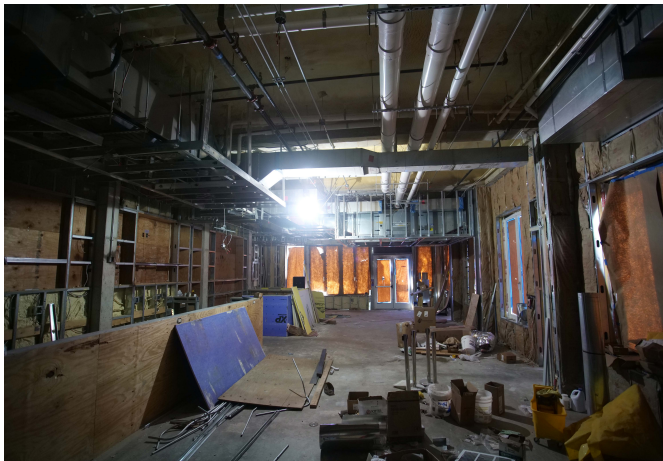
SONNY'S



WARDER ST



# Gallery



JOSH MILLER  
(202) 360.6435  
jmiller@PPGDC.com





PULSE RETAIL

JOSH MILLER  
(202) 360.6435  
[jmiller@PPGDC.com](mailto:jmiller@PPGDC.com)