



# FOR LEASE

**NW OLDHAM PARKWAY, LEE'S SUMMIT, MO**

## **SUMMIT SHOPPING CENTER RETAIL / OFFICE SPACE**

**GREAT LOCATION OFF 50 HWY BETWEEN CHIPMAN & 3rd STREET**



**\$8.00 - 10.00 psf +** Cam Tax & Insurance (\$3.50 psf)  
13,037 sq ft

Former Tuesday Morning space for 20+ years  
Open space with a lot of potential

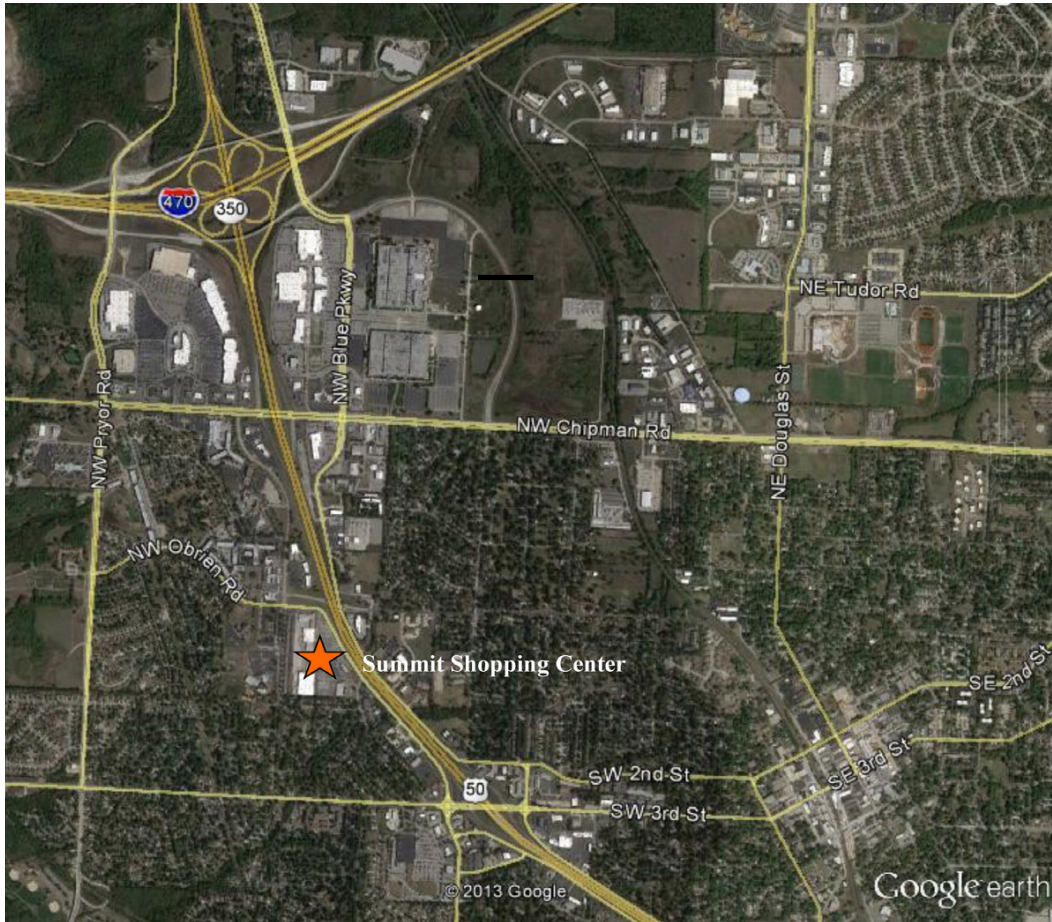
20+ current retail tenants with anchors including:  
Dollar General, Genesis Health Club, and Side Pockets



Matt Pepper • 816-414-5228 • [mpepper@curryre.com](mailto:mpepper@curryre.com)  
2700 Kendallwood Pkwy., Gladstone, MO 64119  
[www.curryre.com](http://www.curryre.com)



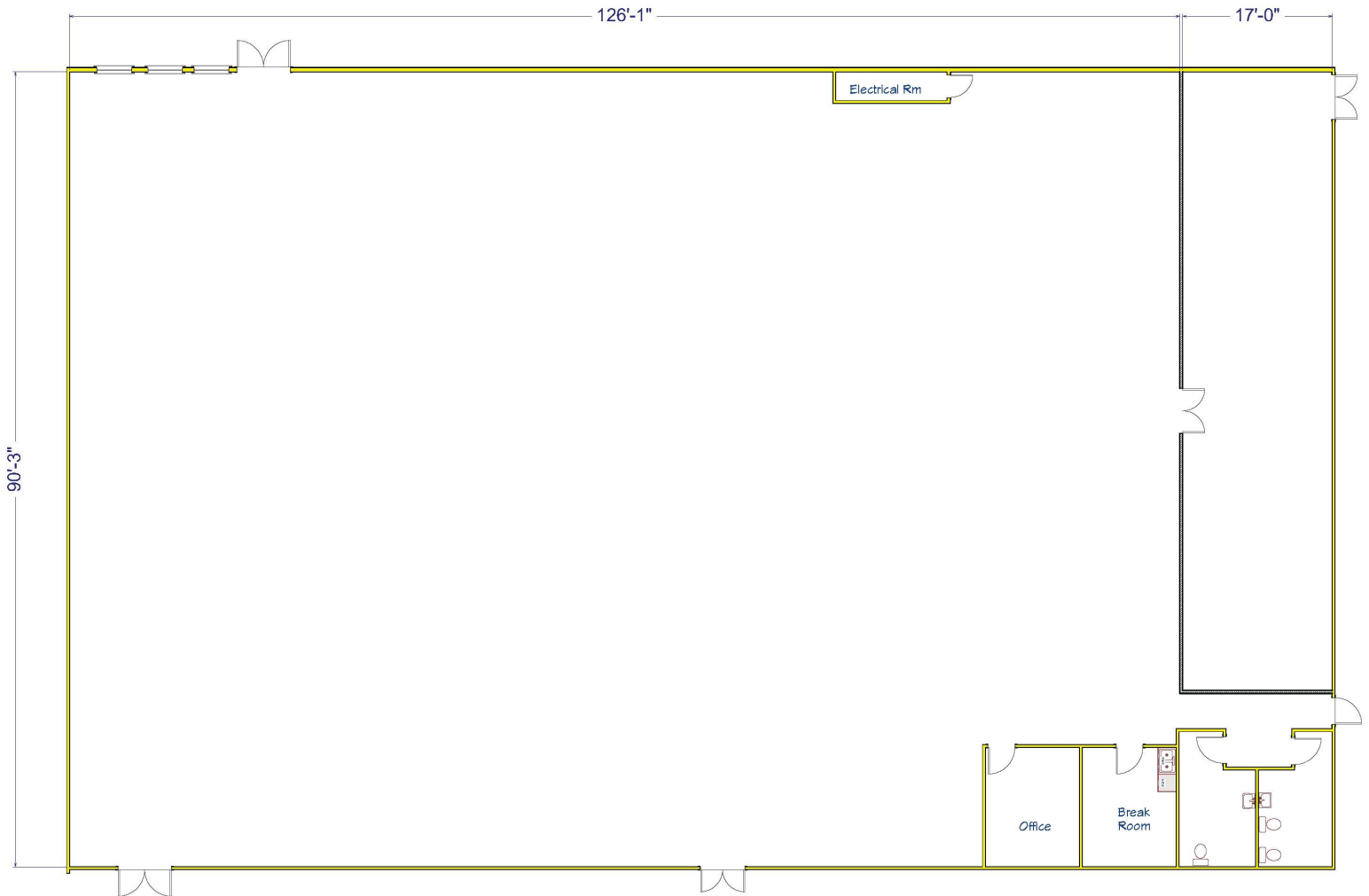
# NW OLDHAM PARKWAY, LEE'S SUMMIT, MO



Matt Pepper • 816-414-5228 • mpepper@curryre.com  
2700 Kendallwood Pkwy., Gladstone, MO 64119  
www.curryre.com



# NW OLDHAM PARKWAY, LEE'S SUMMIT, MO



| Demographics          | 1 Mile    | 3 Mile    | 5 Mile    |
|-----------------------|-----------|-----------|-----------|
| 2022 Total Population | 8,896     | 49,668    | 96,139    |
| 2027 Population       | 9,162     | 51,344    | 99,104    |
| Population Growth     | 0.6%      | 0.7%      | 0.6%      |
| Avg. Household Income | \$66,918  | \$99,180  | \$104,411 |
| Avg. Home value       | \$172,628 | \$226,957 | \$225,529 |



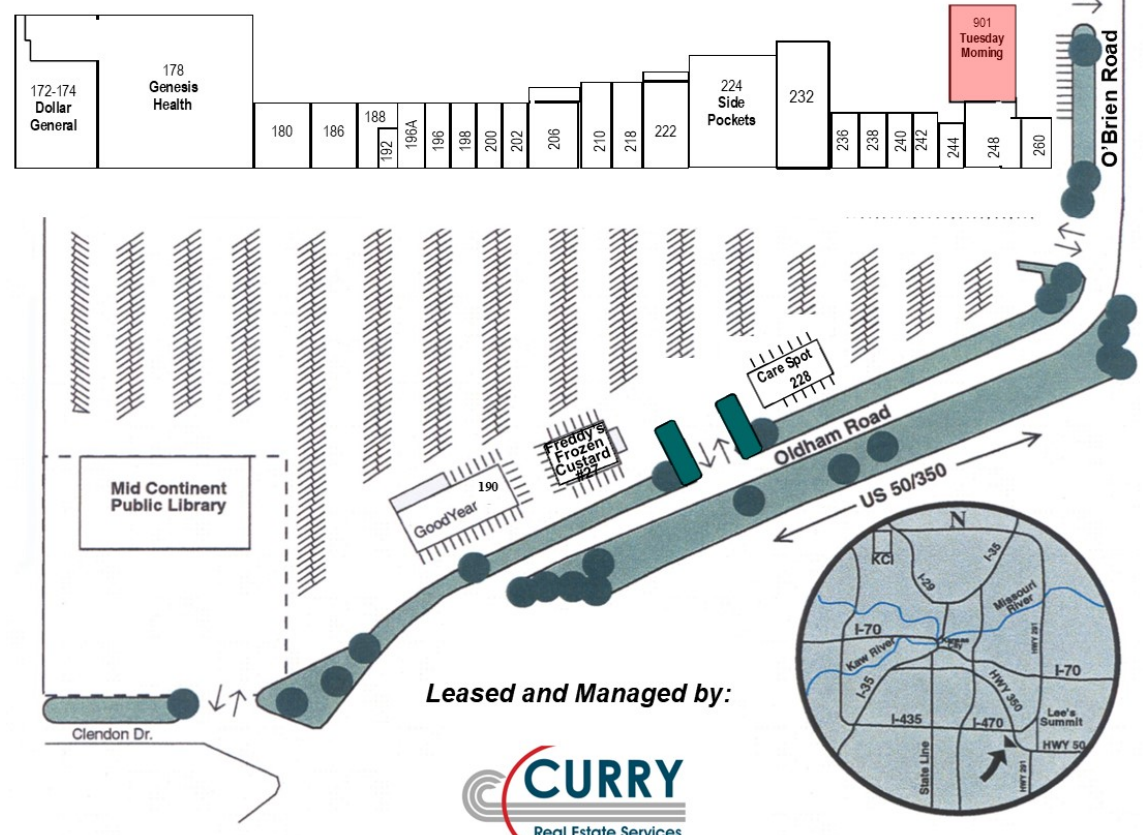
Matt Pepper • 816-414-5228 • [mpepper@curryre.com](mailto:mpepper@curryre.com)  
 2700 Kendallwood Pkwy., Gladstone, MO 64119  
[www.curryre.com](http://www.curryre.com)



# NW OLDHAM PARKWAY, LEE'S SUMMIT, MO

## SUMMIT

|                                       |   |                         |
|---------------------------------------|---|-------------------------|
| 172 Dollar General                    | 200 Wyatt Insurance Agency                    | 240 UNK's Burgers       |
| 178 Genesis                           | 202 Miracle Ear                               | 242 Summit Shoe         |
| 180 Summit Theatre Group              | 206 Weight Watchers                           | 244 Cute Nails          |
| 186 Mindy's Dance Studio              | 210 ETC Physical Therapy                      | 248 Bike Shop           |
| 188 Spectrum Cable                    | 218 Mary Margaret Home Furnishings Whole Sale | 260 Mazuma Credit Union |
| 190 Good Year Tire & Service          | 222 Spectrum Paint                            | 901 <b>VACANCY</b>      |
| 192 Edward Jones                      | 224 Side Pockets                              |                         |
| 194 Freddy's Frozen Custard           | 228 CareNow                                   |                         |
| 196A KC Cyro                          | 232 Z Academy                                 |                         |
| 196 Saphar Beauty Bar Salon           | 236 Savvy Salon KC                            |                         |
| 198 This & That Frame/LS Scrapbooking | 238 KC Blind Guy                              |                         |



Leased and Managed by:



All information furnished regarding property for sale or lease is from sources deemed reliable, but no warranty or representation is made as to the accuracy thereof and the same is subject to errors, omissions, changes of prices, rental or other conditions, prior sale or lease or withdrawal without notice.



Matt Pepper • 816-414-5228 • mpepper@curryre.com  
2700 Kendallwood Pkwy., Gladstone, MO 64119  
www.curryre.com