



# LANDMARK OAKS

2921 LANDMARK PLACE – MADISON, WI

---

BUILDING	Landmark Oaks is a five-story, 110,000 GSF, Class-A building that was completed in 2018. Situated high upon a mature wooded lot, Landmark Oaks offers an abundance of green space and breathtaking views of the Arboretum, Capitol, and surrounding lakes.
LOCATION	The building is conveniently located on a highly visible stretch of the central beltline (135,000+ cars daily), near bike and pedestrian paths, City of Madison bus lines, walking distance to various amenities, and only a ten-minute drive to Downtown, East, or West.
AMENITIES	Amenities include free surface level parking, pro-rata underground parking, park setting with outdoor seating, and showers.

---

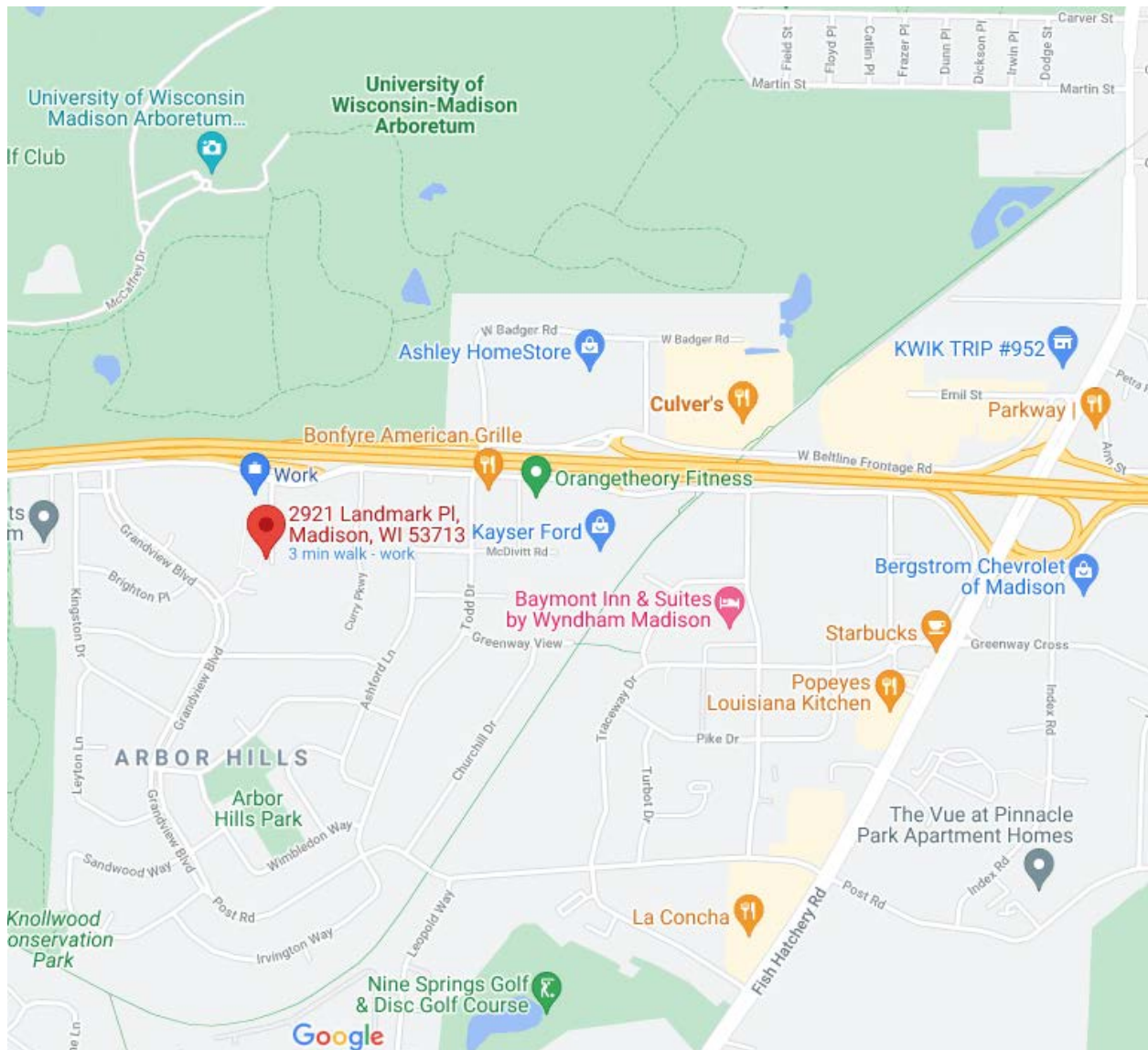
Brandi Zander  
VP of Brokerage & Development  
608-509-1002  
bzander@migllc.biz

MIG Commercial Real Estate  
3001 West Beltline Hwy, #202  
Madison, WI 53713  
www.migllc.biz



# MAP VIEW

2921 LANDMARK PLACE – MADISON, WI



Brandi Zander  
VP of Brokerage & Development  
608-509-1002  
bzander@migllc.biz

MIG Commercial Real Estate  
3001 West Beltline Hwy, #202  
Madison, WI 53713  
www.migllc.biz



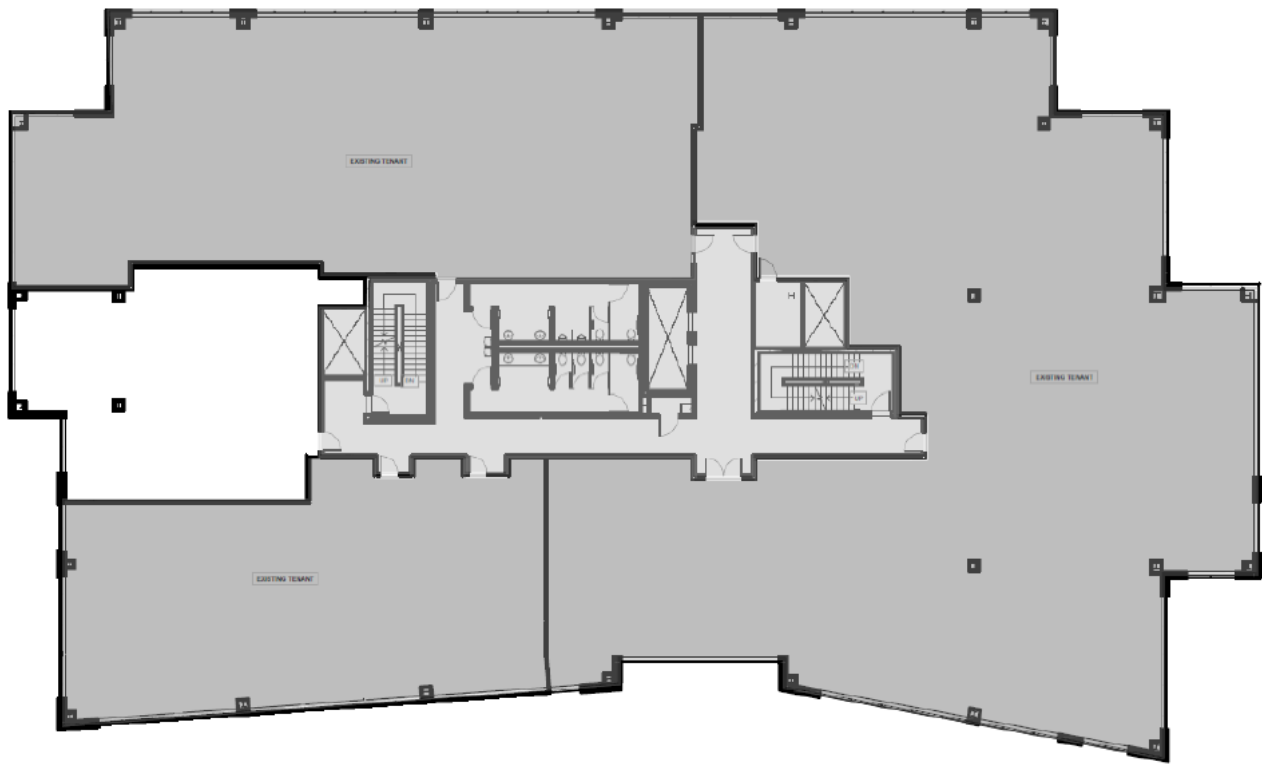
# SPACE FOR LEASE

2921 LANDMARK PLACE

## SECOND FLOOR

1,761 USF / 1,981 RSF

*\$13.50/NNN + \$60/USF TI Allowance*



Brandi Zander  
VP of Brokerage & Development  
608-509-1002  
bzander@migllc.biz

MIG Commercial Real Estate  
3001 West Beltline Hwy, #202  
Madison, WI 53713  
www.migllc.biz