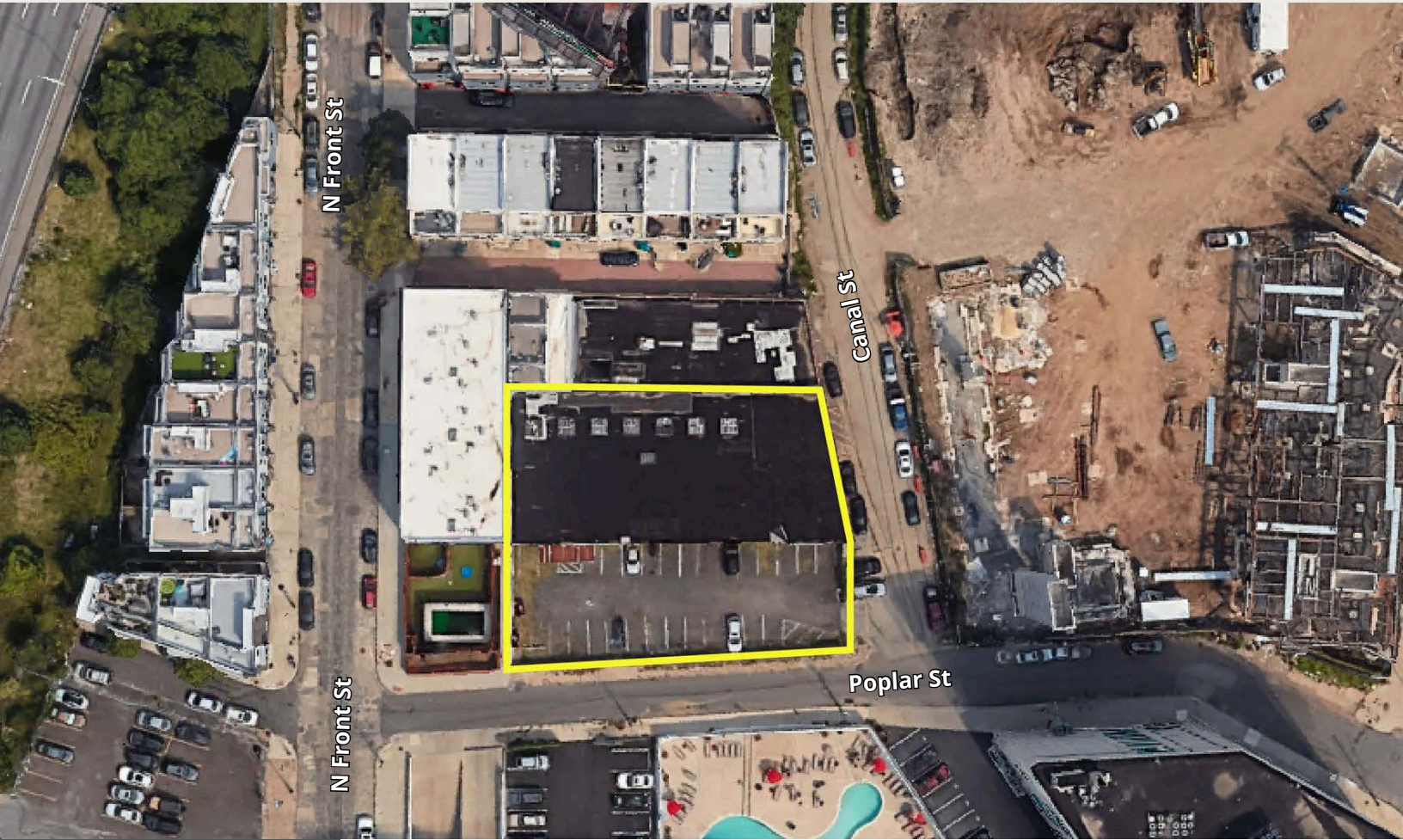


# 901 N CANAL STREET

PHILADELPHIA, PA 19123

+/- 9,000 SF WAREHOUSE WITH PARKING LOT



REPRESENTED BY  
THE FLYNN COMPANY

JOSEPH NASELLI  
JNASELLI@FLYNNCO.COM  
215-561-6565 X 155

MICHAEL GALLAGHER  
MGALLAGHER@FLYNNCO.COM  
215-561-6565 X 151

BRENDAN FLYNN  
BFLYNN@FLYNNCO.COM  
215-561-6565 X 152

The  
Flynn  
Company

## AVAILABLE FOR LEASE

### PROPERTY HIGHLIGHTS



Rare opportunity to lease small warehouse space in the heart of Northern Liberties



+/- 9,000 SF Warehouse with +/-6,850 SF parking lot that could fit up to 30 vehicles



The larger warehouse includes an oversized drive-in door off Canal Street, high ceiling and limited columns



Ownership is currently making improvements



CMX-3 Zoning



Terms are negotiable

THE FLYNN COMPANY

WWW.FLYNNCO.COM | 1621 WOOD STREET, PHILADELPHIA, PA 19103 | 215.561.6565