



For Lease: 2nd Floor Office

251 Sir Francis Drake Blvd., San Anselmo, CA

- Prime Downtown Location
- Open Floor Plan
- High Ceilings
- Excellent Window Line

Offering Summary

Available Sq Ft:	1,022 +/- sf
Initial Base Rent:	\$2,600+/mo.
Lease Type:	Mod. Gross
Min. Lease Term:	3 Years
Available:	Now



Contact:
Mark Cooper
(415) 608-1036
mark@hlcre.com
Lic# 01814831



HL Commercial Real Estate
70 Mitchell Blvd., Suite 202
San Rafael, CA 94903
www.hlcre.com

For Lease: Office/Retail Suite

251 Sir Francis Drake Blvd., San Anselmo, CA 94960

Building/Space Description:

This second floor office space has high ceilings and an excellent window line. Tenant responsible for electric and janitorial. There are shared restrooms. No water in unit.

Location Description:

This highly visible property is located in heart of downtown San Anselmo, surrounded by shops and restaurants and across from the Town Hall and next to Marin Coffee Roasters.

Space Information/Features:

Total Available Square Feet: 1,022 +/- sq. ft. (The owner is source, agent has not verified square footage)

Parking: Street parking only

Building Information/Features:

Total Building Square Feet: 12,861 +/- sq. ft.
Year Constructed: 1922 +/-
Zoning/Permitted Uses: [C-2 \(Central Commercial District\)](#)
Fire Sprinklers: No
Heating & Air Conditioning: Yes, heating only
Flood Zone Designation: Zone AE (An Area Inundated by 100-year flooding)
This land covered by the floodwaters of the base flood is the Special Flood Hazard Area (SFHA) on the NFIP maps. The SFHA is the area where the NFIP's floodplain management regulations must be enforced and the area where the mandatory purchase of flood insurance applies.

Lease Terms:

Minimum Lease Term: 3 years
Initial Base Rent: \$2.54 psf (\$2600/mo)
Base Rent Increases: 3% per annum
Lease Type: Modified Gross
Tenant Expenses: Tenant pays heating, electric and interior janitorial



Contact:
Mark Cooper
(415) 608-1036
mark@hlcre.com
Lic# 01814831



HL Commercial Real Estate
70 Mitchell Blvd., Suite 202
San Rafael, CA 94903
www.hlcre.com

For Lease: Office/Retail Suite

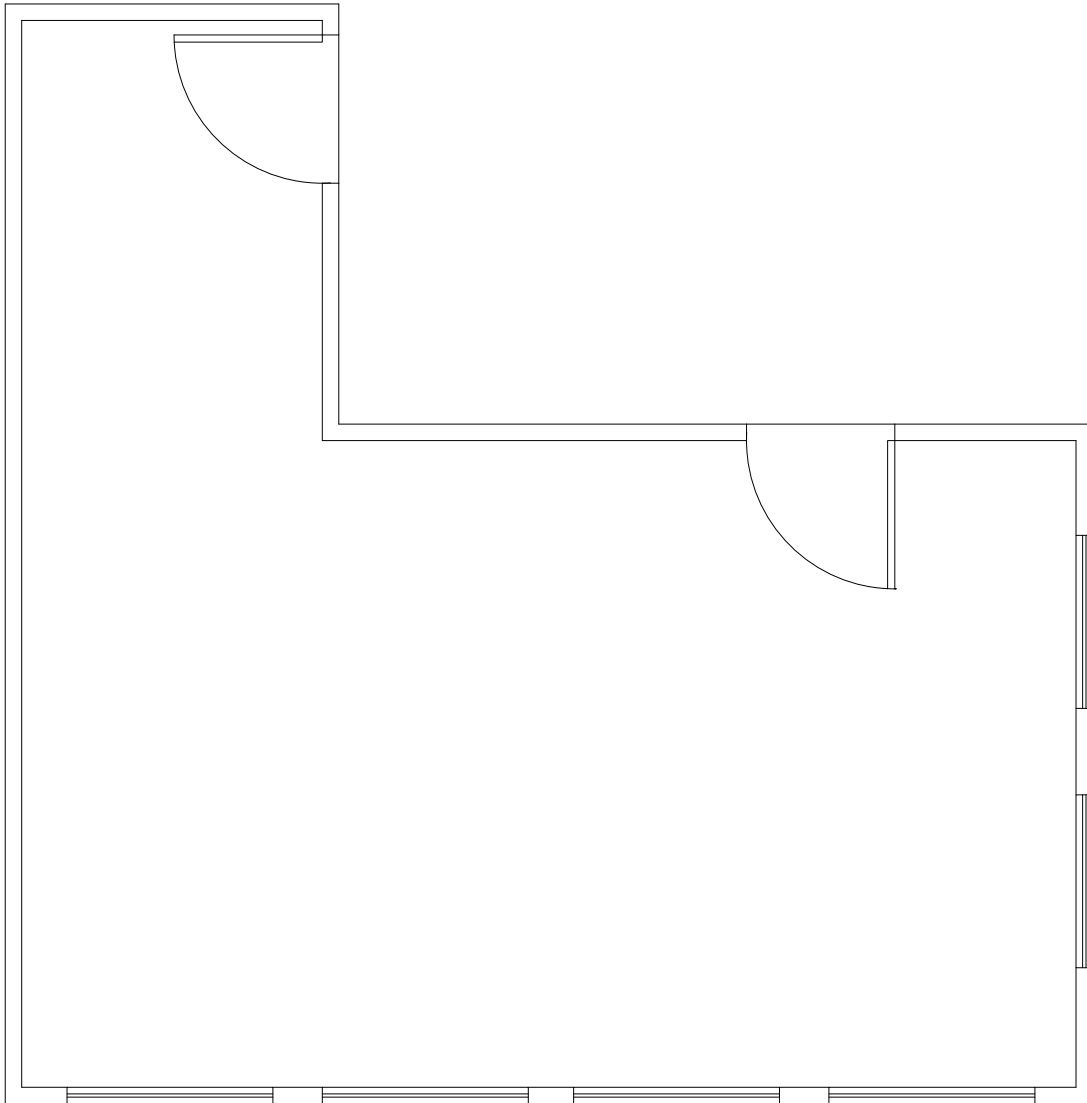
251 Sir Francis Drake Blvd., San Anselmo, CA 94960



No warranty or representation, express or implied, is made as to the accuracy of the information contained herein, and same is submitted subject to errors, omissions, change of price, rental or other conditions, withdrawal without notice, and to any special listing conditions imposed by our principals. The prospective purchaser/lessee should independently verify all information.

For Lease: Office/Retail Suite

251 Sir Francis Drake Blvd., San Anselmo, CA 94960



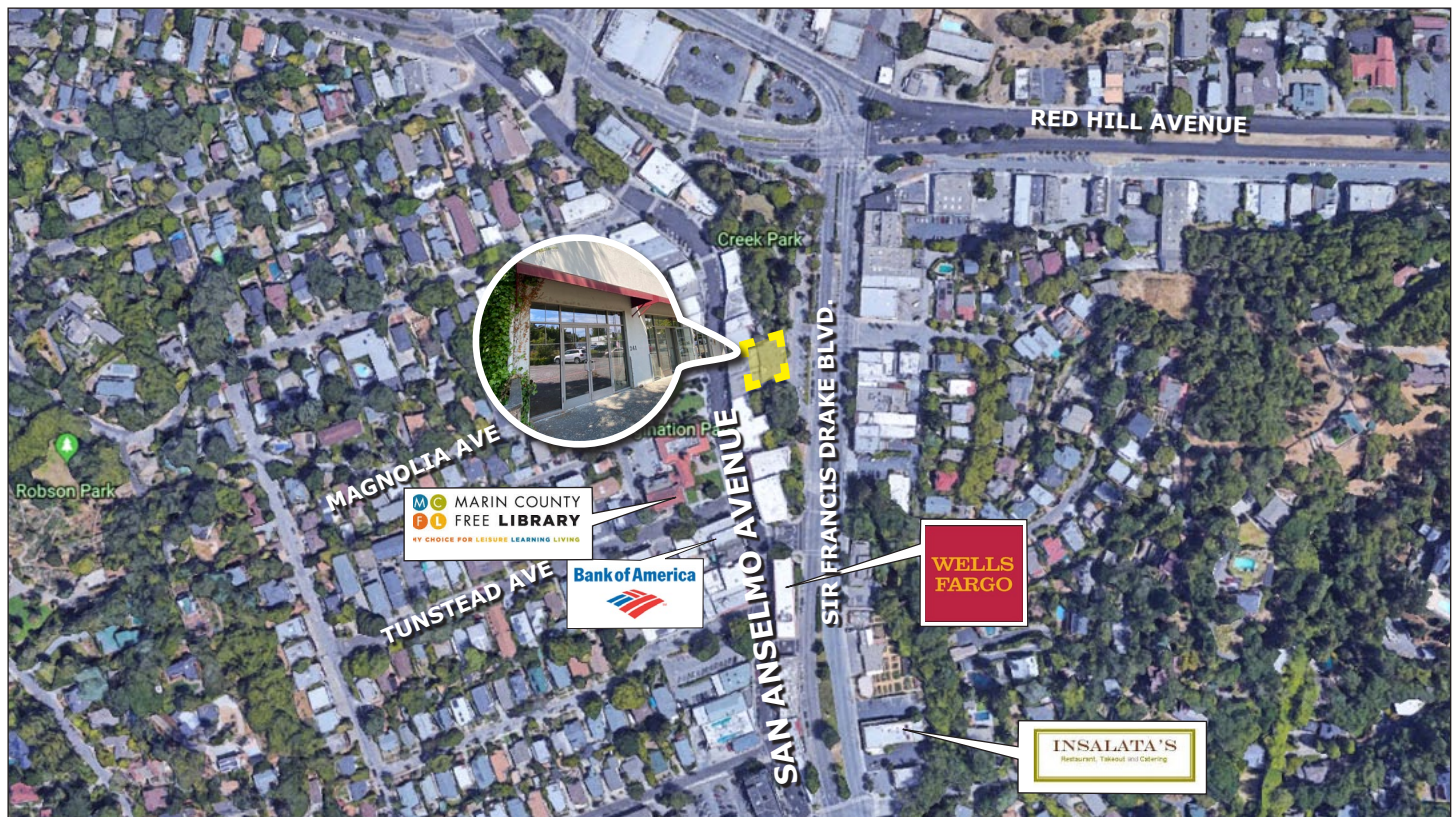
Floor Plan Not to Scale
For Illustration Only

For Lease: Office/Retail Suite

251 Sir Francis Drake Blvd., San Anselmo, CA 94960



[Click here to View in Google Maps](#)



No warranty or representation, express or implied, is made as to the accuracy of the information contained herein, and same is submitted subject to errors, omissions, change of price, rental or other conditions, withdrawal without notice, and to any special listing conditions imposed by our principals. The prospective purchaser/lessee should independently verify all information.