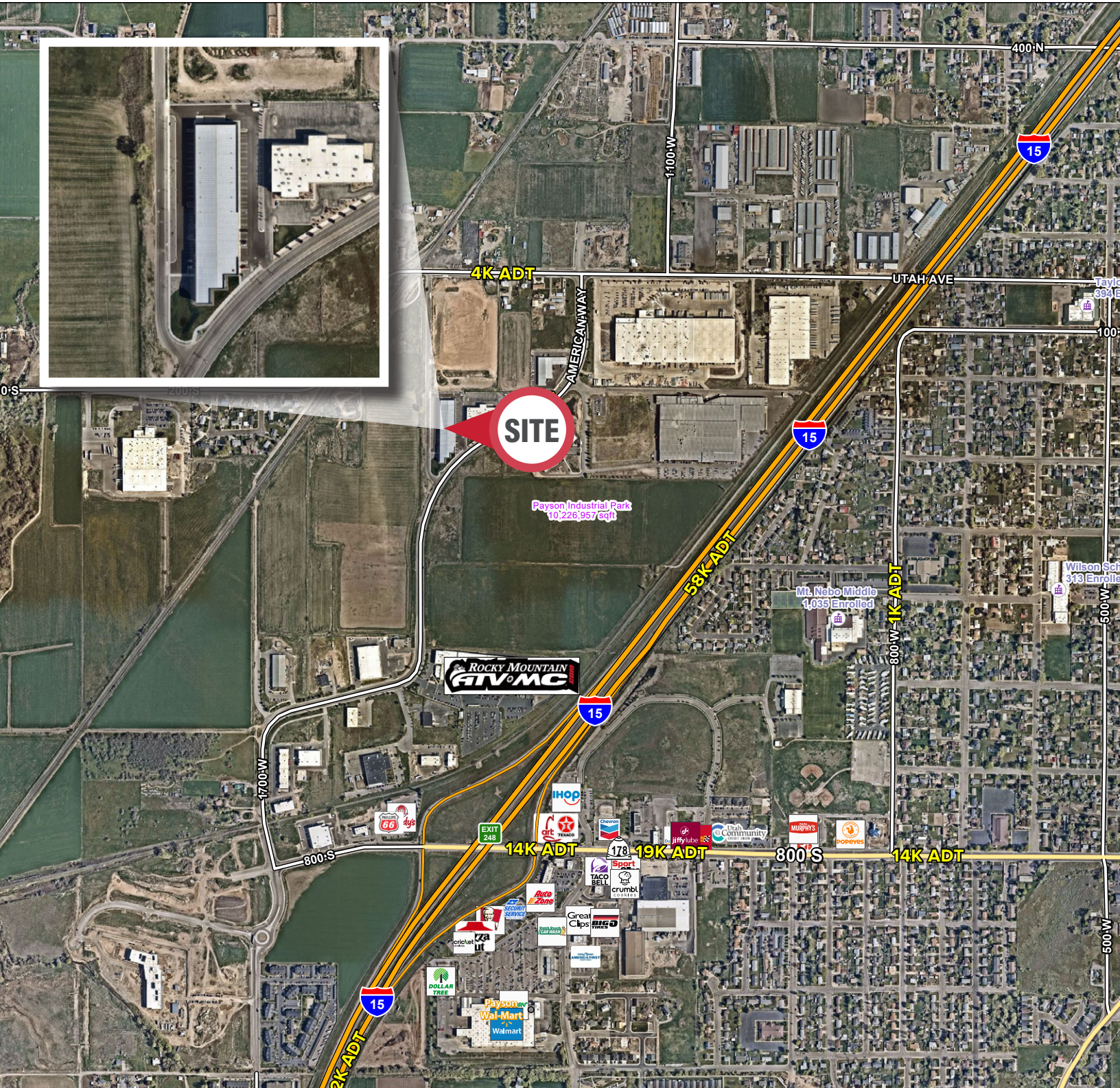


EASTON INDUSTRIAL PARK

292 South American Way | Payson, UT 84651

EASTON INDUSTRIAL PARK

292 South American Way | Payson, UT 84651



FOR LEASE

\$1.20/SF Monthly NNN

Property Highlights

- 27,914 Total Available SF
- Units From 2,327-4,676 SF
- Units Can Be Combined
- Office: 308 SF Per Unit
- 26' Clear Height
- Loading:
- One (1) Ground Level Per Unit (14' x16')
- One (1) Shared Loading Dock
- Power: 250 Amp 208v | 3-Phase | 4-Wire
- Fire Suppression System
- Year Built: 2024
- Zoning: Business Park Development (BPD)
- Access: Conveniently Located off I-15

Purchase Options Available

Contact

SKYLER PETERSON, SIOR
Executive Vice President
m 801.656.7354
speterson@legendcommercial.com

TRE BOURDEAUX, SIOR
Vice President
m 801.824.0397
tbourdeaux@legendcommercial.com

PARKER TAGGART
Senior Associate
m 801.928.1815
ptaggart@legendcommercial.com



Contact

SKYLER PETERSON, SIOR
Executive Vice President
m 801.656.7354
speterson@legendcommercial.com

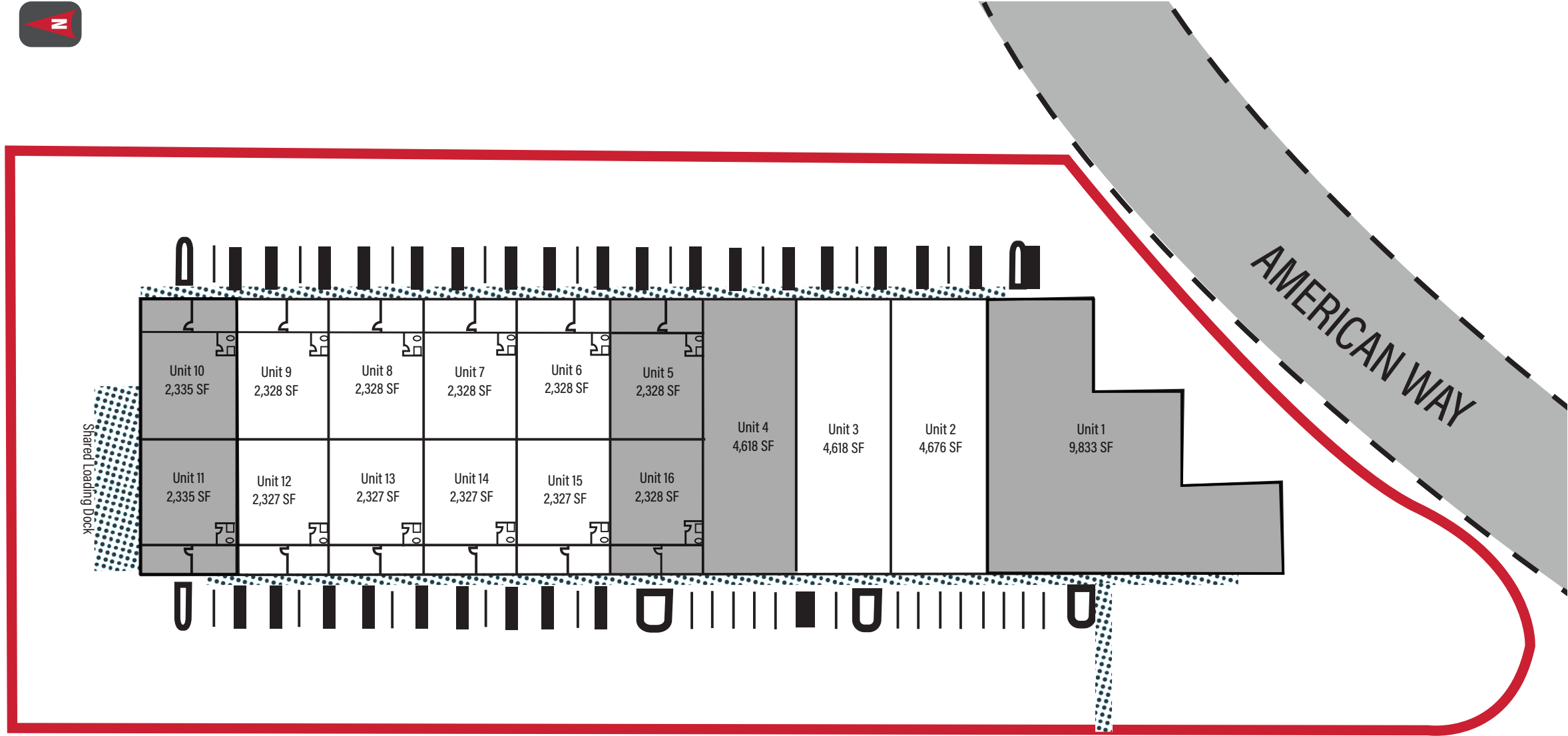
TRE BOURDEAUX, SIOR
Vice President
m 801.824.0397
tbourdeaux@legendcommercial.com

PARKER TAGGART
Senior Associate
m 801.928.1815
ptaggart@legendcommercial.com



EASTON INDUSTRIAL PARK

292 South American Way | Payson, UT 84651



UNIT	SIZE (SF)
1	SOLD
2	4,676
3	4,618
4	SOLD
5	SOLD
6	2,328
7	2,328
8	2,328
9	2,328
10	LEASED
11	LEASED
12	2,327
13	2,327
14	2,327
15	2,327
16	LEASED

Contact

SKYLER PETERSON, SIOR

Executive Vice President

m 801.656.7354

speterson@legendcommercial.com

TRE BOURDEAUX, SIOR

Vice President

m 801.824.0397

tbourdeaux@legendcommercial.com

PARKER TAGGART

Senior Associate

m 801.928.1815

ptaggart@legendcommercial.com

THE WILL GROUP

801.930.6750 | www.legendllp.com

2180 S 1300 E, Suite 240 | Salt Lake City, UT 84106

Contact

SKYLER PETERSON, SIOR

Executive Vice President

m 801.656.7354

speterson@legendcommercial.com

TRE BOURDEAUX, SIOR

Vice President

m 801.824.0397

tbourdeaux@legendcommercial.com

PARKER TAGGART

Senior Associate

m 801.928.1815

ptaggart@legendcommercial.com

THE WILL GROUP

801.930.6750 | www.legendllp.com

2180 S 1300 E, Suite 240 | Salt Lake City, UT 84106

© Legend Partners, LLP. All rights reserved. All information contained herein is from sources deemed reliable; however, no representation or warranty is made to the accuracy thereof.

© Legend Partners, LLP. All rights reserved. All information contained herein is from sources deemed reliable; however, no representation or warranty is made to the accuracy thereof.