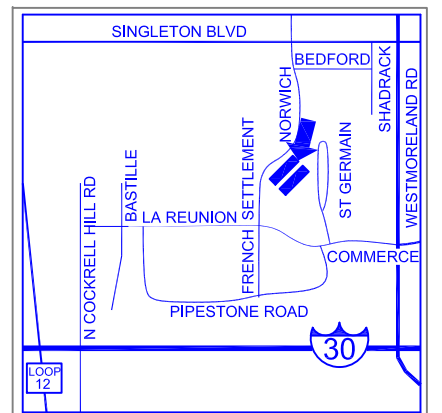
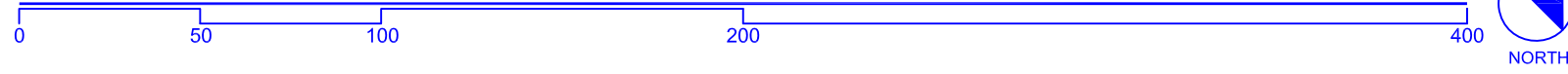
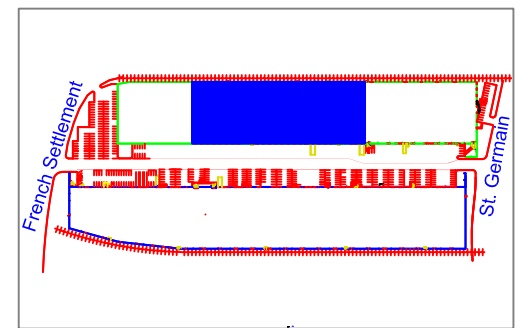


**OVERALL FLOOR PLAN**



**LOCATION MAP**  
NORTH



**SITE PLAN**  
NORTH

**Turnpike 3**  
 2170 French Settlement Road  
 Suite 100  
 Turnpike Distribution Center  
 Dallas, Texas 75212

**SF Summary**

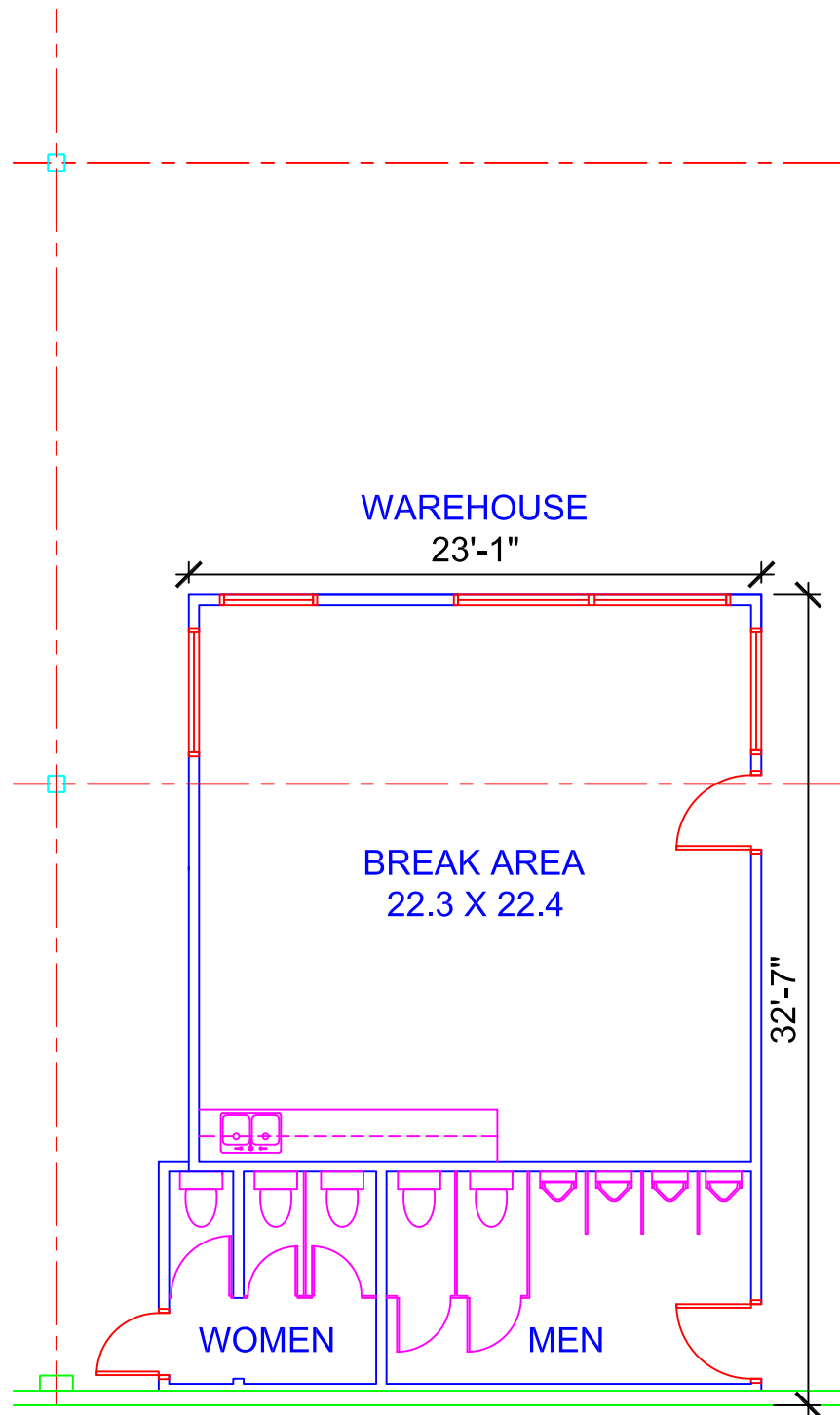
MAIN OFFICE	2,012 SQ. FT.
WAREHOUSE BREAK AREA	763 SQ. FT.
TOTAL OFFICE	2,775 SQ. FT.
WAREHOUSE	138,975 SQ. FT.
TOTAL	141,750 SQ. FT.

**Building Features**

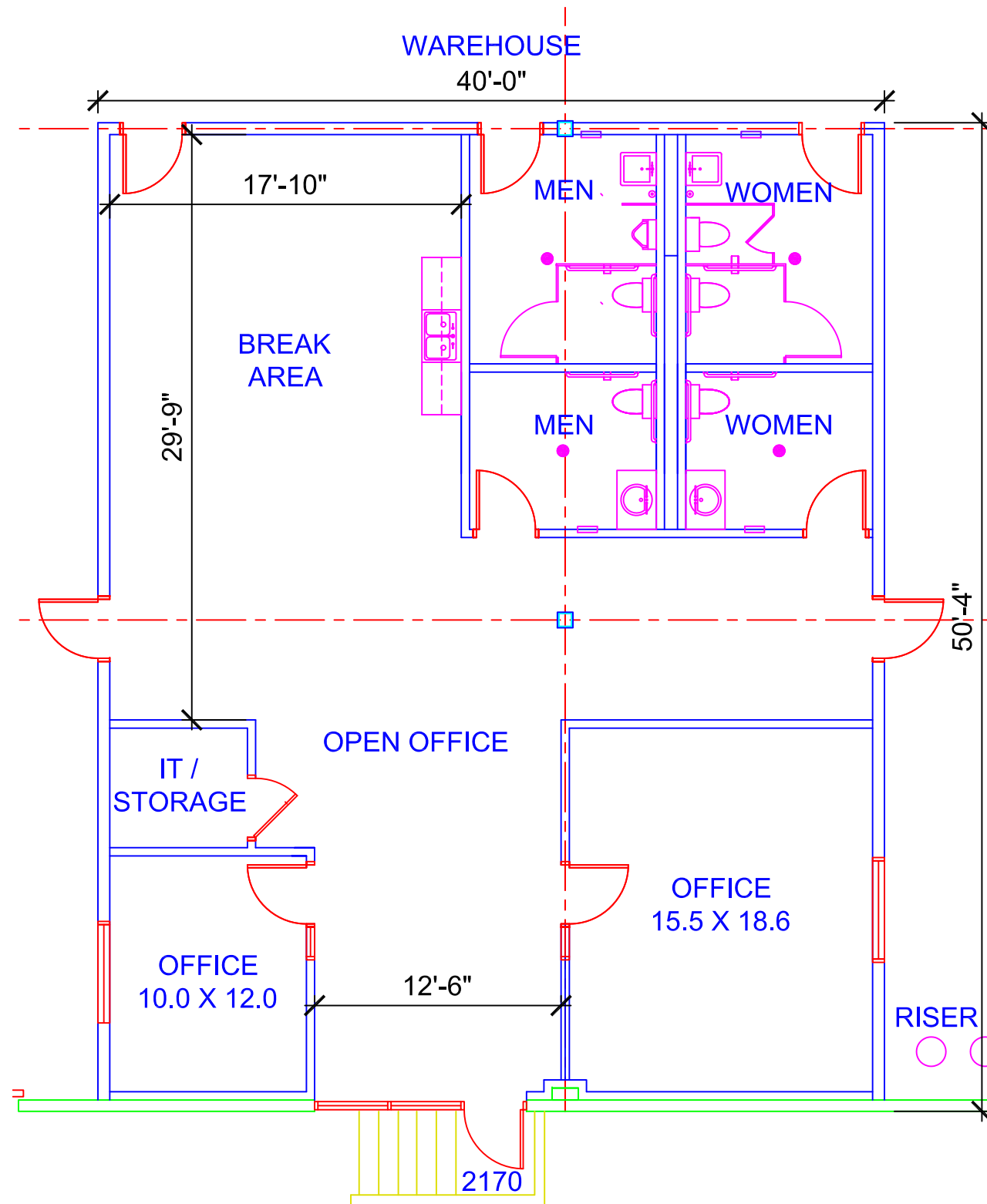
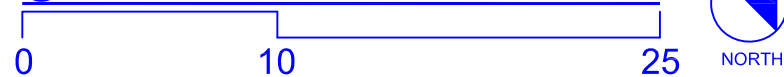
- 24' CLEAR HEIGHT
- FULLY SPRINKLERED
- (21) 10' X 10' DOCK DOORS; (13) WITH LEVELERS
- (1) 10' X 15' DOCK DOOR WITH LEVELER
- (1) 15.5' X 10' DOCK DOOR WITH RAMP
- (1) 16' X 16' DOCK DOOR WITH RAMP
- (13) RAIL SERVED OH DOORS
- EASY ACCESS TO MAJOR THOROUGHFARES



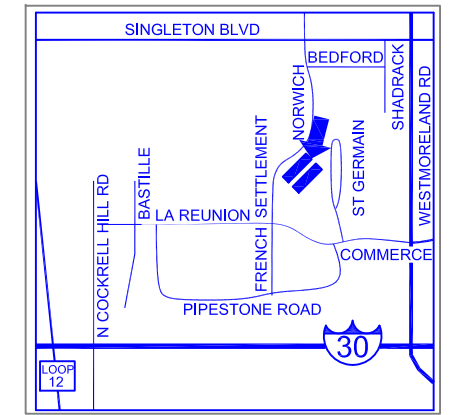
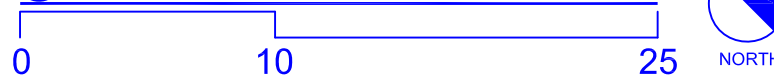
5950 Berkshire Lane Suite 900 Dallas, TX 75225  
 (972) 241-8300 Fax (972) 241-7955



ENLARGED FLOOR PLAN  
@ WAREHOUSE BREAK AREA



ENLARGED FLOOR PLAN  
@ MAIN OFFICE



LOCATION MAP  
NORTH



SITE PLAN  
NORTH

Turnpike 3  
2170 French Settlement Road  
Suite 100  
Turnpike Distribution Center  
Dallas, Texas 75212

**SF Summary**

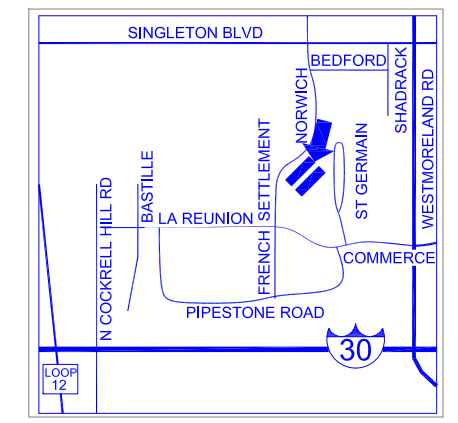
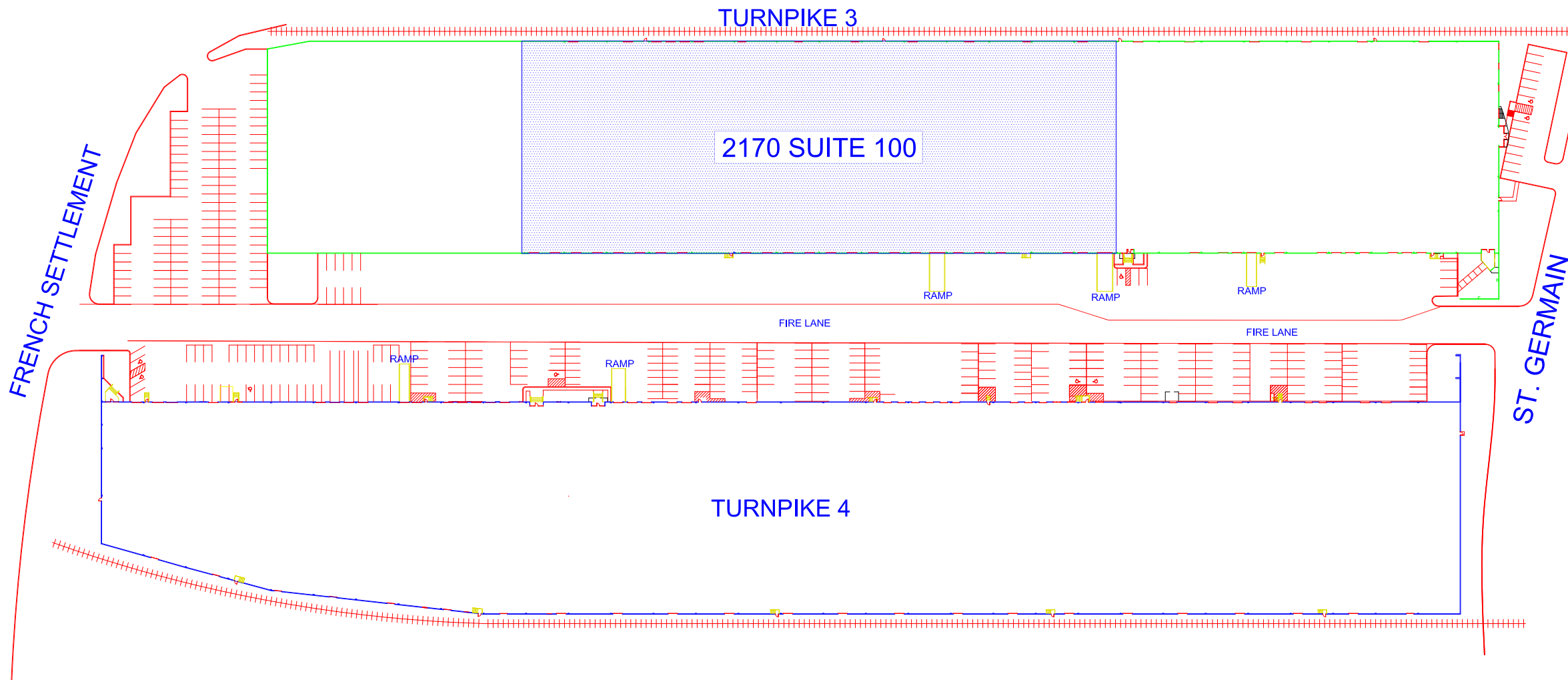
MAIN OFFICE	2,012 SQ. FT.
WAREHOUSE BREAK AREA	763 SQ. FT.
TOTAL OFFICE	2,775 SQ. FT.
WAREHOUSE	138,975 SQ. FT.
TOTAL	141,750 SQ. FT.

**Building Features**

- 24' CLEAR HEIGHT
- FULLY SPRINKLERED
- (21) 10' X 10' DOCK DOORS; (13) WITH LEVELERS
- (1) 10' X 15' DOCK DOOR WITH LEVELER
- (1) 15.5' X 10' DOCK DOOR WITH RAMP
- (1) 16' X 16' DOCK DOOR WITH RAMP
- (13) RAIL SERVED OH DOORS
- EASY ACCESS TO MAJOR THOROUGHFARES



5950 Berkshire Lane Suite 900 Dallas, TX 75225  
(972) 241-8300 Fax (972) 241-7955



**LOCATION MAP**  
NORTH

**Turnpike 3**  
**2170 French Settlement Road**  
**Suite 100**  
**Turnpike Distribution Center**  
**Dallas, Texas 75212**

**SF Summary**

MAIN OFFICE	2,012 SQ. FT.
WAREHOUSE BREAK AREA	763 SQ. FT.
<b>TOTAL OFFICE</b>	<b>2,775 SQ. FT.</b>
WAREHOUSE	138,975 SQ. FT.
<b>TOTAL</b>	<b>141,750 SQ. FT.</b>

- Building Features**
- 24' CLEAR HEIGHT
  - FULLY SPRINKLERED
  - (21) 10' X 10' DOCK DOORS; (13) WITH LEVELERS
  - (1) 10' X 15' DOCK DOOR WITH LEVELER
  - (1) 15.5' X 10' DOCK DOOR WITH RAMP
  - (1) 16' X 16' DOCK DOOR WITH RAMP
  - (13) RAIL SERVED OH DOORS
  - EASY ACCESS TO MAJOR THOROUGHFARES



5950 Berkshire Lane Suite 900 Dallas, TX 75225  
 (972) 241-8300 Fax (972) 241-7955