

FOR LEASE

5301 Veterans Memorial Parkway, St. Peters MO



PROPERTY SUMMARY

- 2 Story, Class A Office Building at I-70 and Hwy 370
- 35,400 sqft total of Medical and General Office Tenants
- Suites Available on the 1st Floor
 - 102 - 1,622 rsf
- Suites Available on the 2nd Floor
 - 201 - 3,420 rsf (previous Law Firm)
 - 200 - 4,024 rsf
- Exceptional visibility to I-70
- Parking for 4.5 cars per 1,000 sqft
- Join Other Tenants in Building: St. Louis Family Allergy, Cloverleaf Pediatrics, and Pain Management
- **LEASE RATE: \$21.50 sqft**
Full Service w/o in-suite janitorial



 Listing Agent **Craig O'Sadnick**
 Cell **636-541-0950**
 osadnick@shockleycommercial.com

 Listing Agent **Trevor Shockley**
 Cell **314-280-5037**
 trevor@shockleycommercial.com

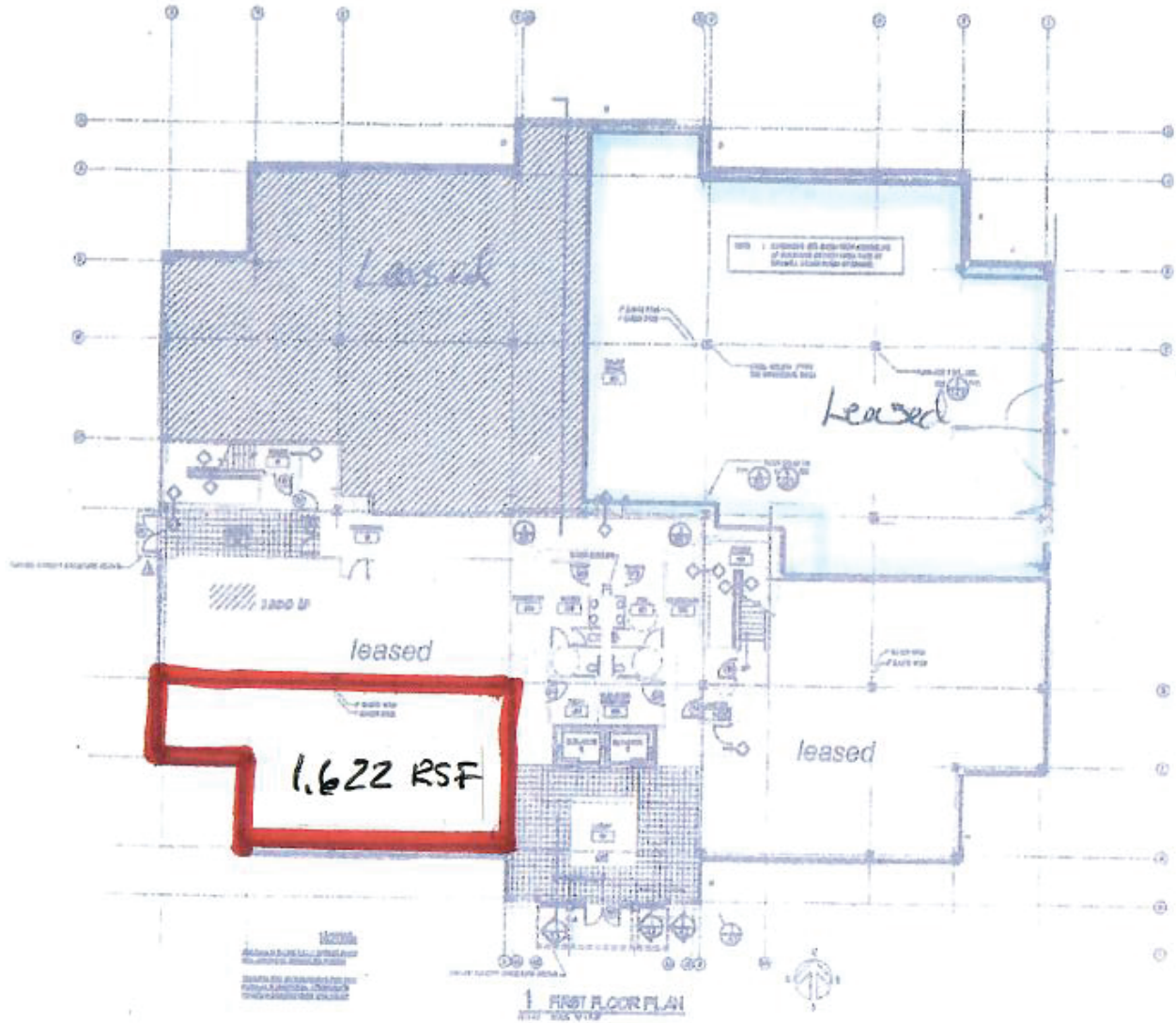


501 First Capital Dr. Suite 5,
St. Charles MO 63301

 Office **636-946-9753**
 www.shockleycommercial.com

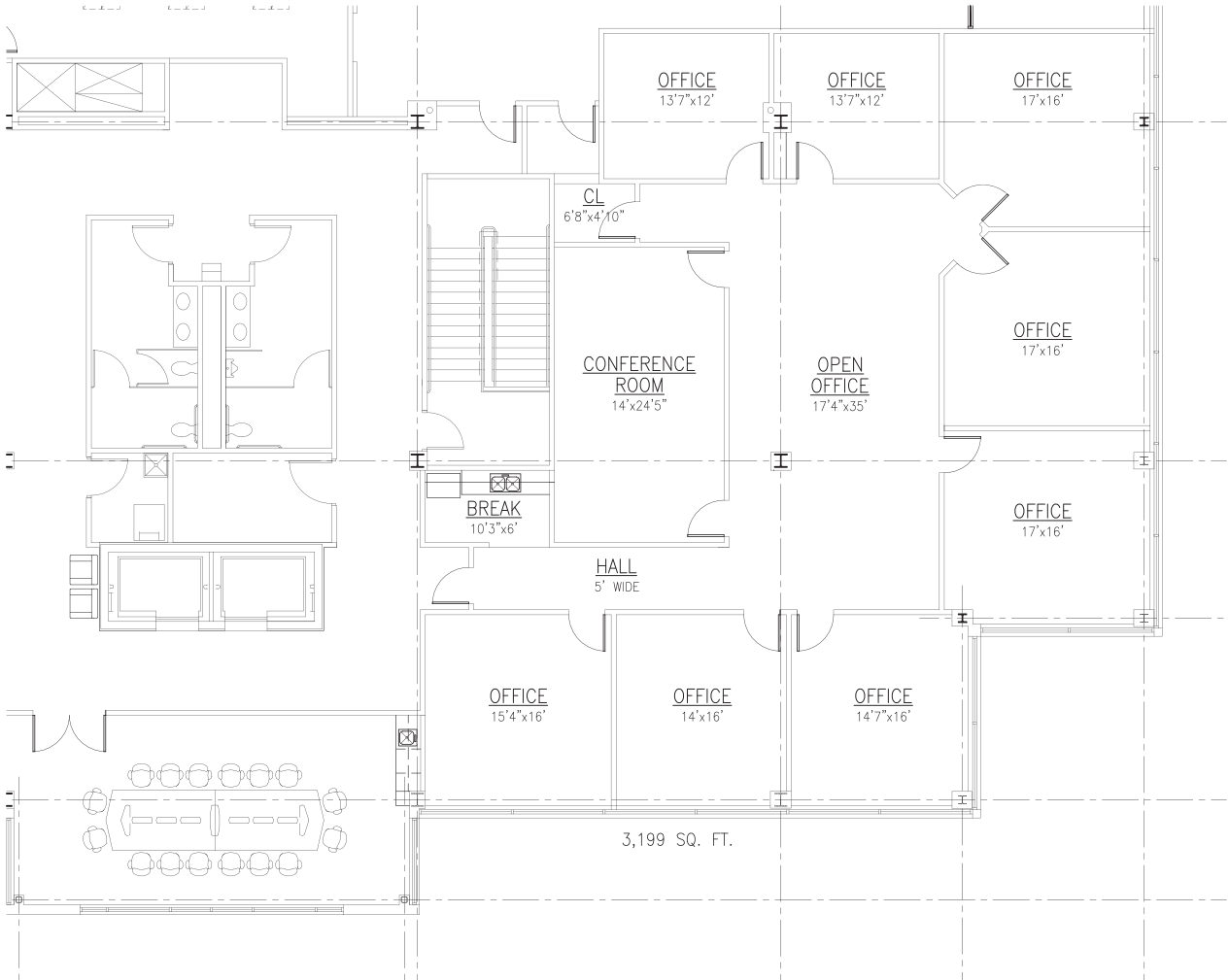
FIRST FLOOR PLAN

SUITE 102 - 1,622 RSF



SECOND FLOOR PLAN

ENLARGED SUITE 200



1 SECOND FLOOR PLAN

AT 1/4" SCALE 1/4" = 1'-0"



NORTH

AERIAL MAP



St. Peters Corporate Centre is located in the most desirable area of St. Peters. Fronting I-70, this Class A office building is in the middle of corporate and commercial growth, just minutes from Lambert St. Louis International Airport.