

5900 MERCURY DRIVE
DEARBORN, MICHIGAN

HI-TECH FOR SALE OR LEASE
71,734 Square Feet Available



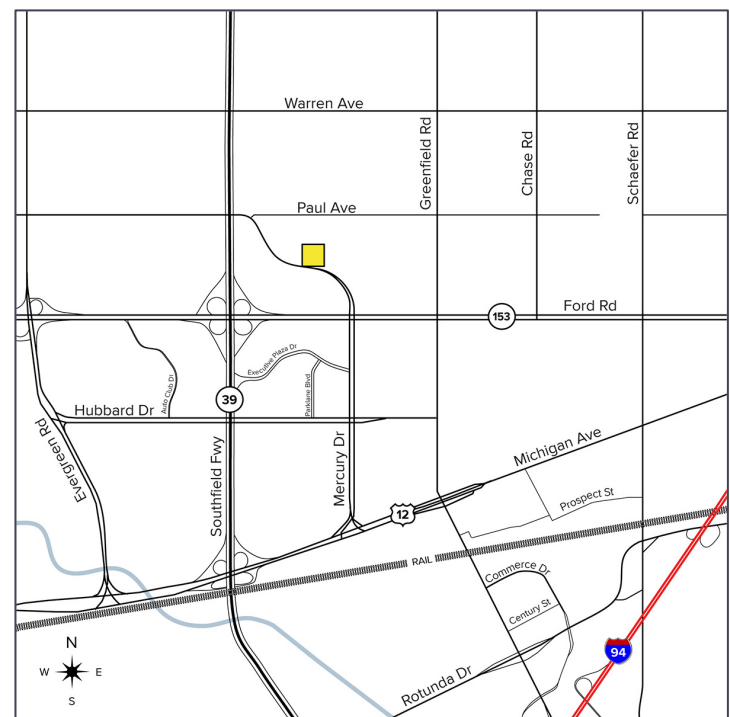
**SIGNATURE
ASSOCIATES**
KNOW SIGNATURE | KNOW RESULTS

FORMER CARHART R&D CENTER



PROPERTY FEATURES

- 71,734 square feet available
- 6,500 square feet shop
- 14' clear height
- (1) 12' x 14' grade level door; can add another
- Exceptional interior space with lofted office areas and upgrades
- Conveniently located near expressways, downtown Detroit, and Metropolitan Airport
- Entire park features five quality hotels, several retail shopping complexes, more than 30 restaurants and four educational institutions
- Lease Rate: \$12.00/sq. ft. NNN
- Sale Price: \$6,500,000 (\$90.61/sq. ft.)



For more information, please contact:

JACK TOWNSEND
(248) 948 0115
jtownsend@signatureassociates.com

CHRIS SECONTINE
(248) 799 3174
csecontine@signatureassociates.com

SIGNATURE ASSOCIATES
One Towne Square, Suite 1200
Southfield, MI 48076
www.signatureassociates.com

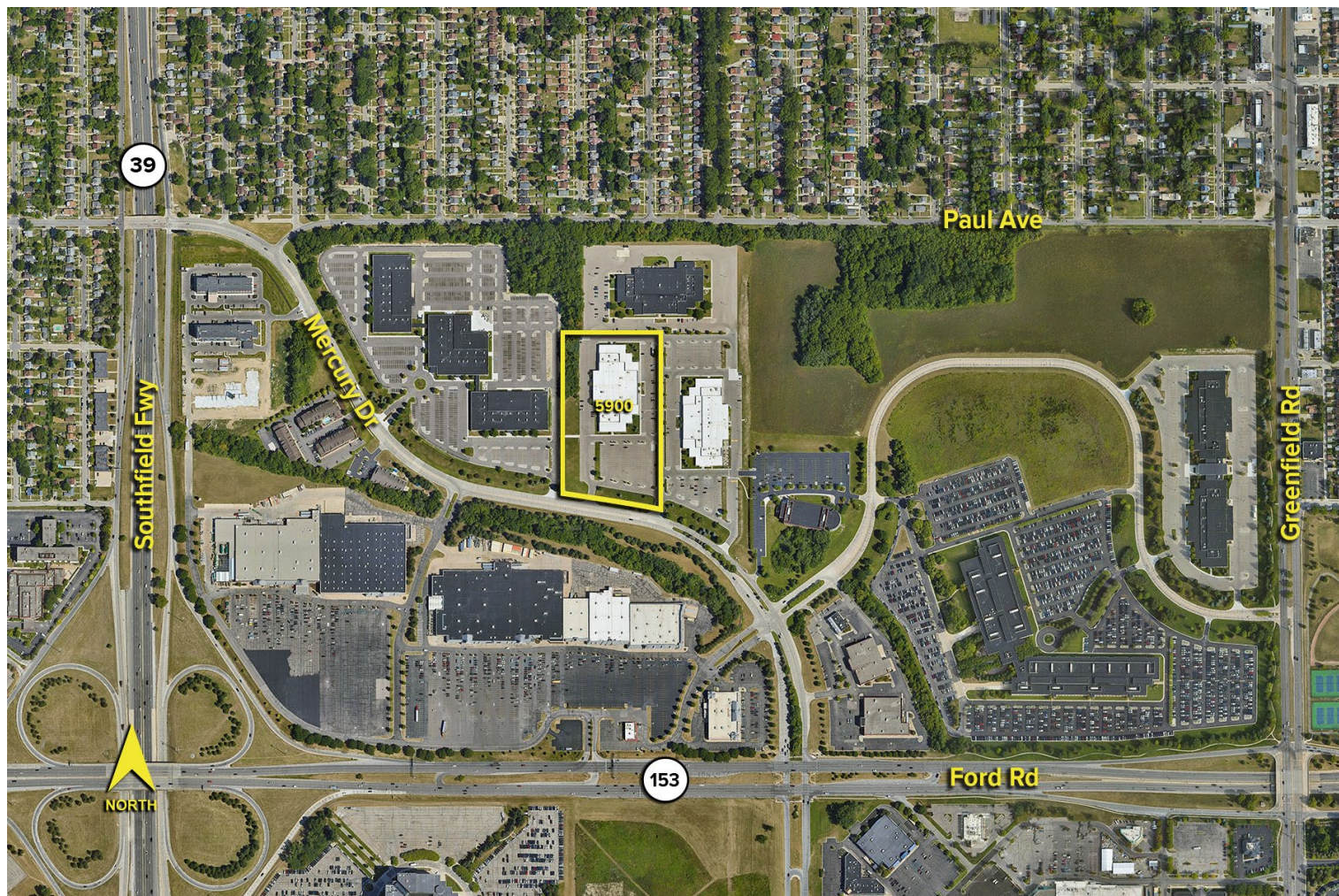
Information is subject to verification and no liability for errors or omissions is assumed. Price is subject to change and listing withdrawal.

5900 Mercury Drive – Dearborn, Michigan

Hi-Tech For Sale or Lease

71,734
Square Feet
AVAILABLE

Aerial



For more information, please contact:

JACK TOWNSEND
(248) 948 0115
jtownsend@signatureassociates.com

CHRIS SECONTINE
(248) 799 3174
csecontine@signatureassociates.com

SIGNATURE ASSOCIATES
One Towne Square, Suite 1200
Southfield, MI 48076
www.signatureassociates.com

Information is subject to verification and no liability for errors or omissions is assumed. Price is subject to change and listing withdrawal.