

# 2010 Jefferson Street, Napa, CA Office for Sublease



±1,368 SF  
\$3,500/Mo. Gross

- 3-4 Offices
- Reception
- Multiple Entrances/Entry Options
- Free Standing Office
- Kitchen/work Area
- Two Restrooms
- Centrally Located
- Good On-Site Parking



Sublease Term Ends: 8/31/26  
Zoning: OC (Commercial Office)



**Cathy D'Angelo Holmes**  
(707) 304-3338  
cholmes@cnapavalley.com  
Lic.#01355085

**Michael J. Moffett**  
(707) 479-1976  
mmoffett@cnapavalley.com  
Lic.#00946472



**COLDWELL BANKER  
COMMERCIAL**  
BROKERS  
OF THE VALLEY

1775 Lincoln Ave.  
Napa, CA 94558

**AVAILABLE FOR SUBLEASE**

# PHOTO GALLERY



**Cathy D'Angelo Holmes**  
(707) 304-3338  
cholmes@cnapavalley.com  
Lic.#01355085

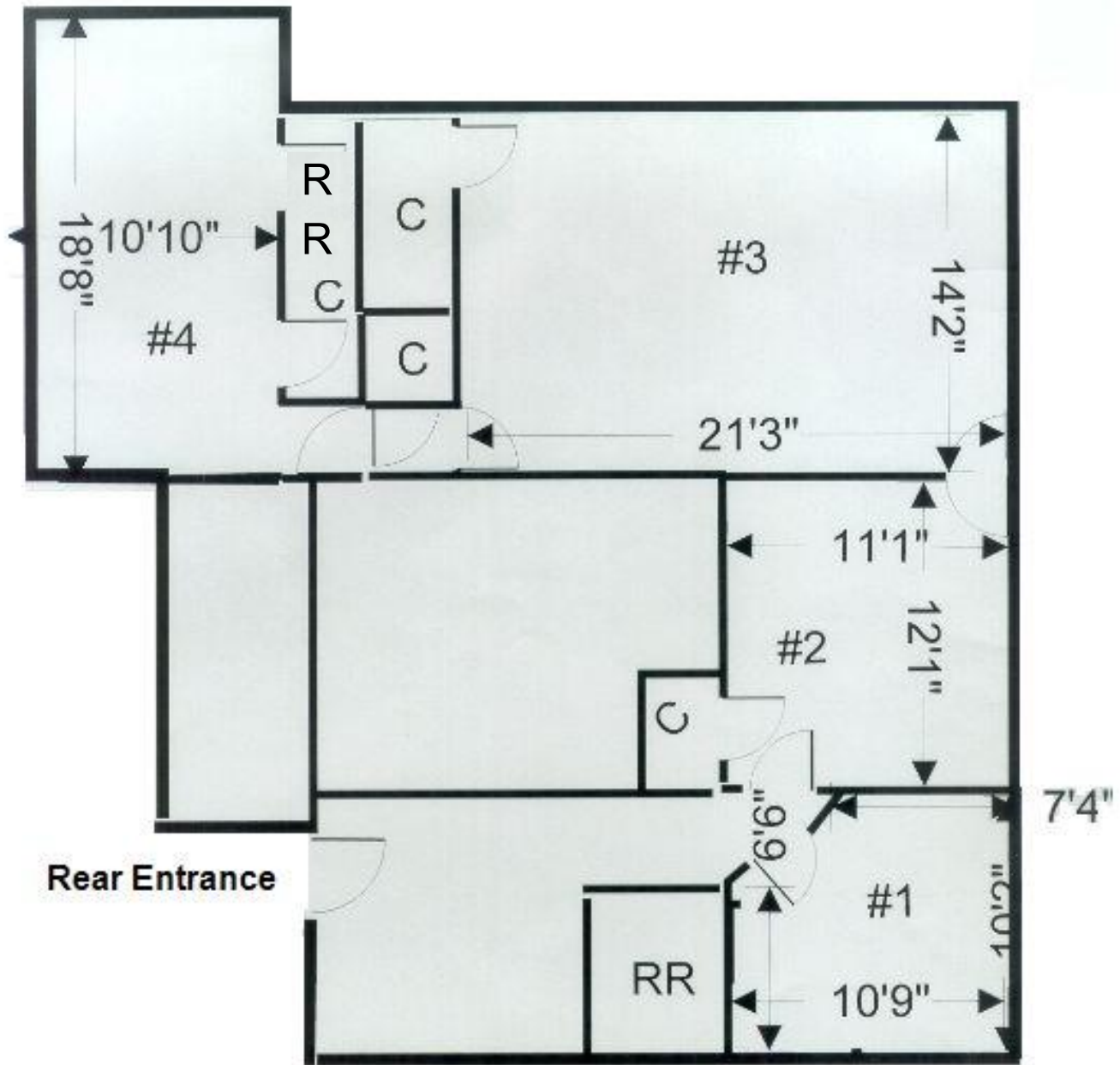
**Michael J. Moffett**  
(707) 479-1976  
mmoffett@cnapavalley.com  
Lic.#00946472



**COLDWELL BANKER  
COMMERCIAL**  
BROKERS  
OF THE VALLEY

1775 Lincoln Ave.  
Napa, CA 94558

# FLOOR PLAN



**Cathy D'Angelo Holmes**  
(707) 304-3338  
cholmes@cnapavalley.com  
Lic.#01355085

**Michael J. Moffett**  
(707) 479-1976  
mmoffett@cnapavalley.com  
Lic.#00946472



**COLDWELL BANKER  
COMMERCIAL**  
BROKERS  
OF THE VALLEY

1775 Lincoln Ave.  
Napa, CA 94558