

UNION, NJ - SHOPPING CENTER

2260 ROUTE 22 E, UNION, NJ 07083



OFFERING SUMMARY

Available SF: 11,815 SF
Lease Rate: Call for Details
Building Size: 11,815 SF

NEIGHBORING TENANTS



Bank



JENNIFER FURNITURE

PROPERTY OVERVIEW

Available Immediately: Retail space with convenient access to the Garden State Parkway in Union NJ.

PROPERTY HIGHLIGHTS

- Available Immediately: 11,815 SF
- 1.8 Acre Site
- Densely Populated Marketplace
- Great Highway Visibility
- Nearby to Numerous National Retailers
- Convenient Access to the Garden State Parkway
- 79,000+ Daily Car Count

FOR MORE INFORMATION CONTACT:

JOHN T. OSTROWSKI

201.703.9700 x121

jostrowski@thegoldsteingroup.com

NEIL GOLDSTEIN

201.703.9700 x112

ngoldstein@thegoldsteingroup.com



THEGOLDSTEINGROUP.COM

Licensed Real Estate Broker | 45 EISENHOWER DRIVE | SUITE 246 | PARAMUS, NJ 07652

All information is from sources deemed reliable and is submitted subject to errors, omissions, change of price, terms, rental, prior sale and withdrawal without notice.

UNION, NJ - SHOPPING CENTER

2260 ROUTE 22 E, UNION, NJ 07083



FOR MORE INFORMATION CONTACT:

JOHN T. OSTROWSKI
 201.703.9700 x121
 jostrowski@thegoldsteingroup.com

NEIL GOLDSTEIN
 201.703.9700 x112
 ngoldstein@thegoldsteingroup.com

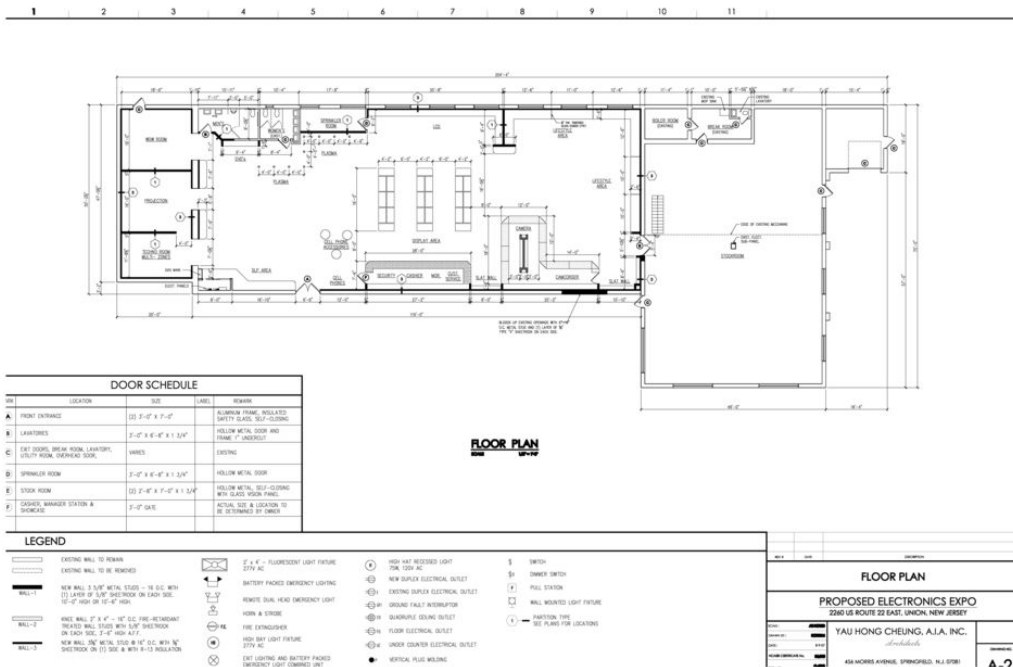
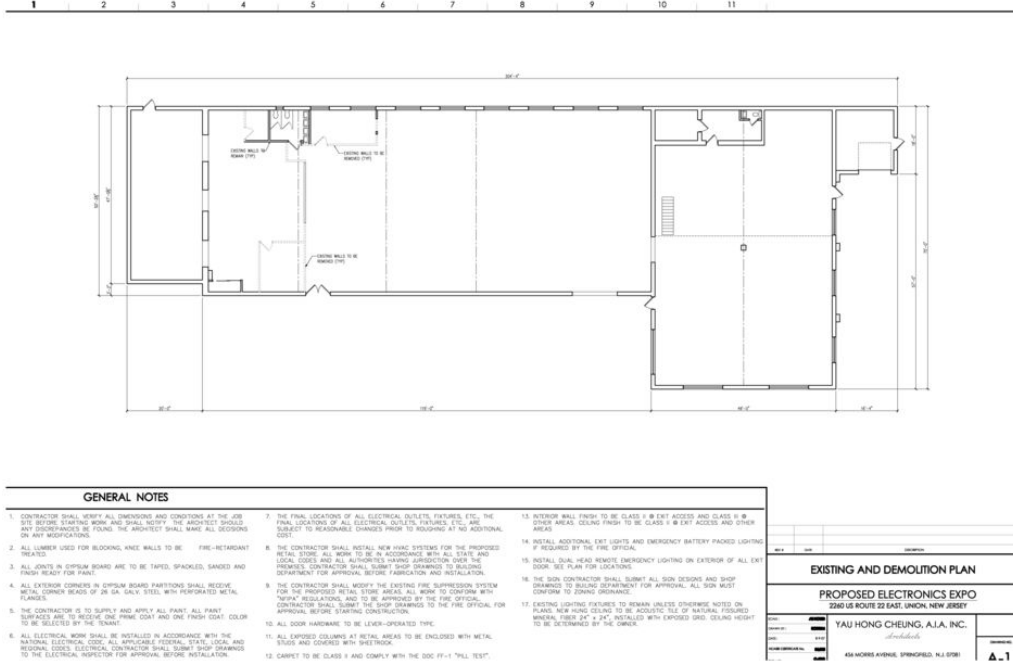


Licensed Real Estate Broker | 45 EISENHOWER DRIVE | SUITE 246 | PARAMUS, NJ 07652

THEGOLDSTEINGROUP.COM

All information is from sources deemed reliable and is submitted subject to errors, omissions, change of price, terms, rental, prior sale and withdrawal without notice.

UNION, NJ - SHOPPING CENTER
2260 ROUTE 22 E, UNION, NJ 07083



FOR MORE INFORMATION CONTACT:

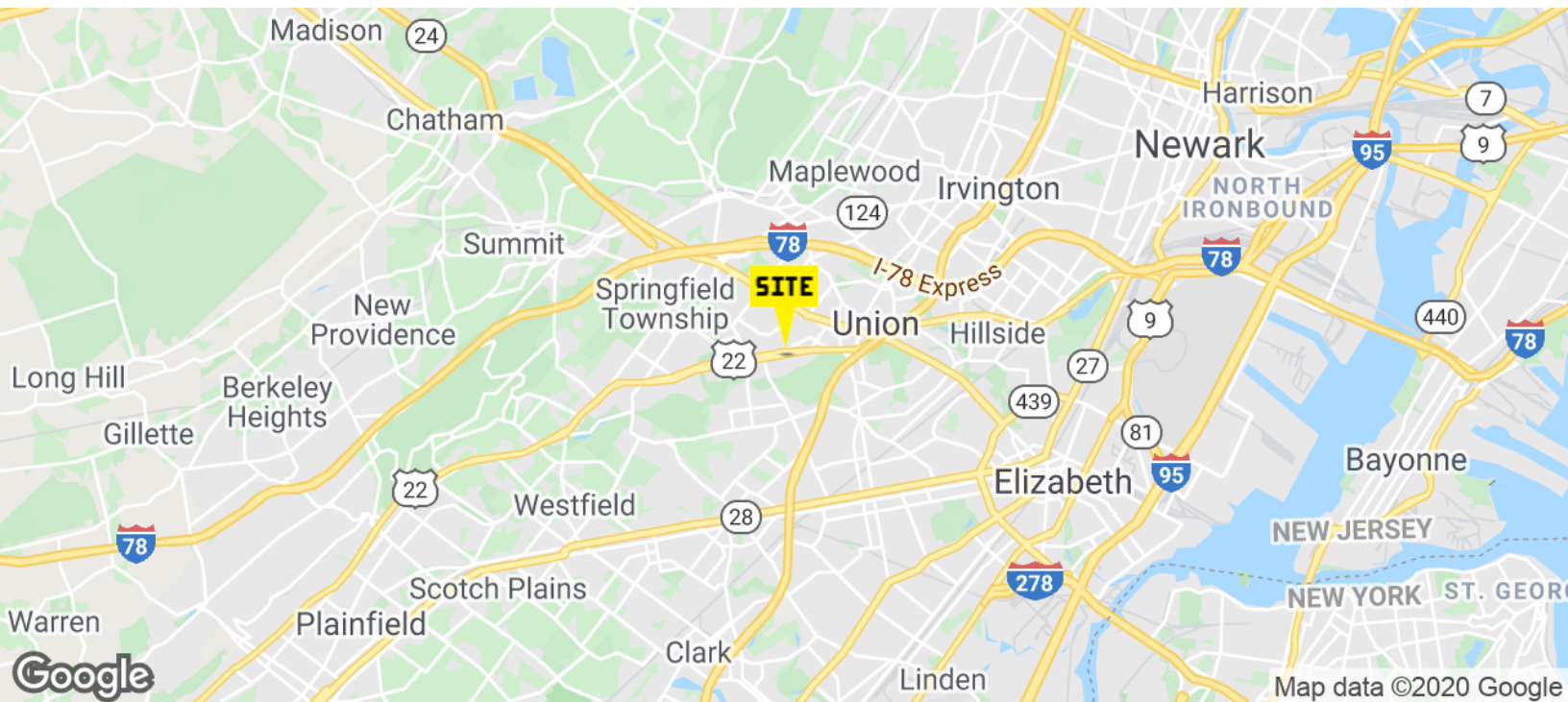
JOHN T. OSTROWSKI
201.703.9700 x121
jostrowski@thegoldsteingroup.com

NEIL GOLDSTEIN
201.703.9700 x112
ngoldstein@thegoldsteingroup.com



UNION, NJ - SHOPPING CENTER

2260 ROUTE 22 E, UNION, NJ 07083



FOR MORE INFORMATION CONTACT:

JOHN T. OSTROWSKI

201.703.9700 x121

jostrowski@thegoldsteingroup.com

NEIL GOLDSTEIN

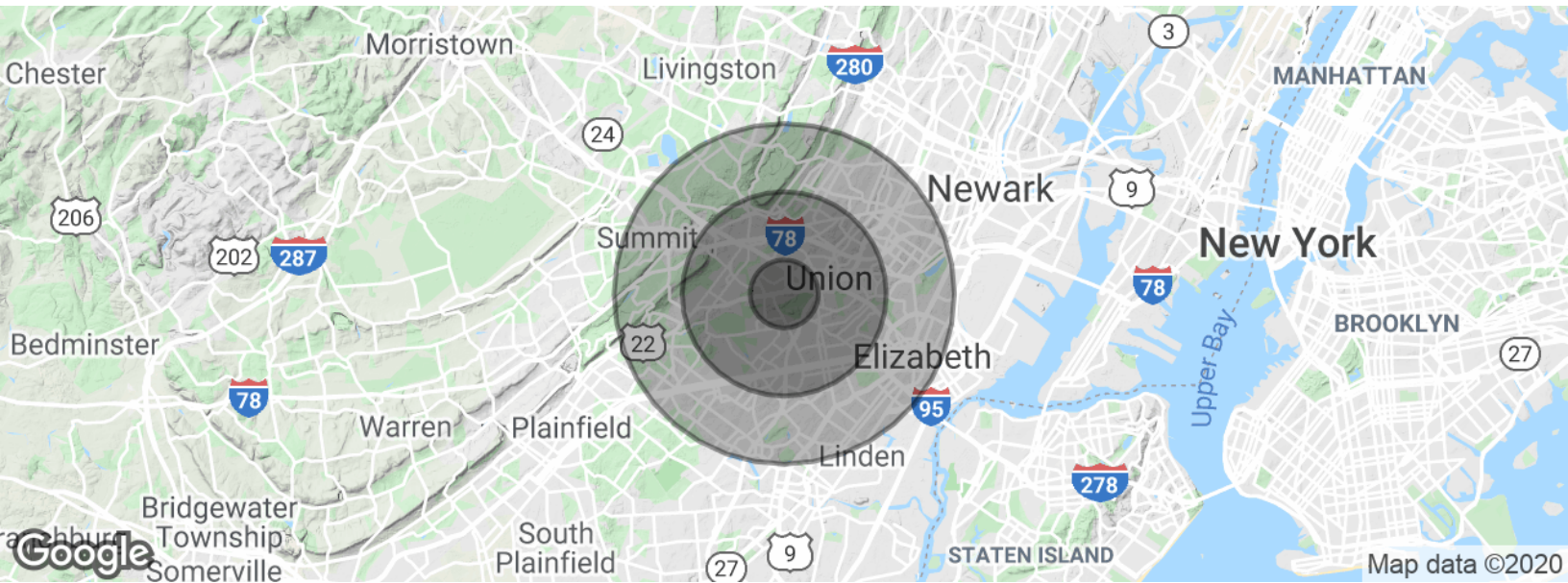
201.703.9700 x112

ngoldstein@thegoldsteingroup.com



UNION, NJ - SHOPPING CENTER

2260 ROUTE 22 E, UNION, NJ 07083



POPULATION	1 MILE	3 MILES	5 MILES
Total population	12,477	158,552	489,215
Median age	42.2	40.0	38.2
Median age (Male)	40.9	38.1	36.5
Median age (Female)	42.2	41.3	39.8
HOUSEHOLDS & INCOME	1 MILE	3 MILES	5 MILES
Total households	4,517	56,784	173,665
# of persons per HH	2.8	2.8	2.8
Average HH income	\$85,288	\$100,796	\$97,180
Average house value	\$377,946	\$434,381	\$470,936

* Demographic data derived from 2010 US Census

FOR MORE INFORMATION CONTACT:

JOHN T. OSTROWSKI

201.703.9700 x121

jostrowski@thegoldsteingroup.com

NEIL GOLDSTEIN

201.703.9700 x112

ngoldstein@thegoldsteingroup.com

