



Prime flex industrial sublease opportunity

195 Exeter Road #B, London ON

- Renovated offices and warehouse space at Meadowbrook Business Park East
- In close proximity to Highway 401 and Highway 402
- 40% office built out



2,200 sf



\$11.50 psf



Near Meadowbrook Dr



LI1, LI4 (10), LI7



11' 8"

Glen Larocque

Sales Representative, Vice President

+1 226 289 2835

glen.larocque@avisonyoung.com

**AVISON
YOUNG**

Property details

Unit available for sublease within the Meadowbrook Business Park East Campus. Recently renovated professional front offices with rear warehouse. Roughly 40% office built out.

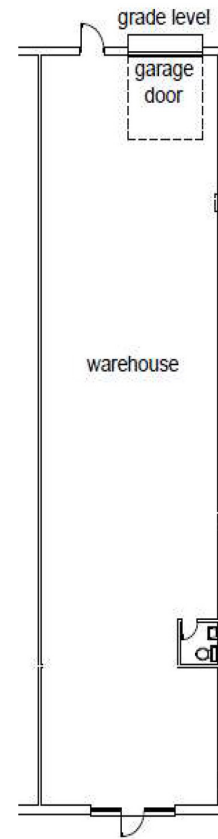
Grade level shipping door in both units.
Note: Glass partitions in Unit B will be removed prior to sublease commencement and returned to drywall finish.

Excellent location within a well established business park within close proximity to Highway 401 and 402.

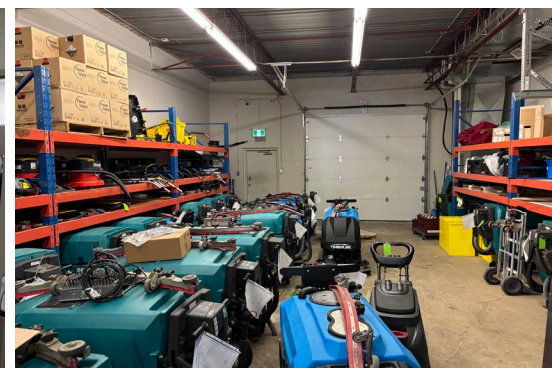
Sub-lease Expiry

Unit B: December 31 2027

Possibly for longer term direct with landlord



Please note this does not reflect the current office layout

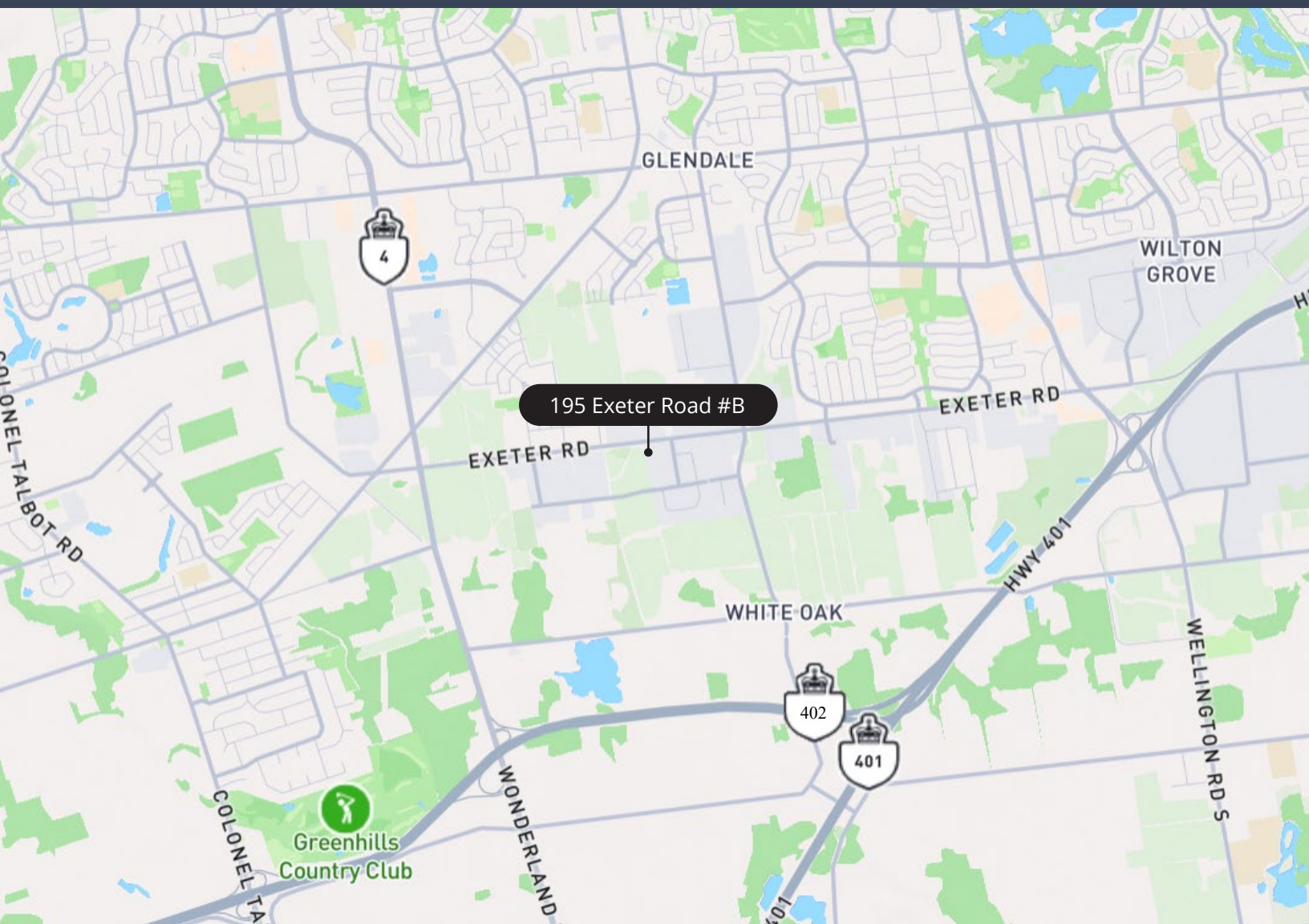


Site plan



Unit B - 2,200 sf

Industrial for sublease | 195 Exeter Road #B, London



446,779 Population of London



\$106,205 Avg. Household Income



465,514 Daytime Population



38.5 Median Age

Get more information

Glen Larocque

Sales Representative, Vice President

+1 226 289 2835

glen.larocque@avisonyoung.com

Avison Young Commercial Real Estate Services, LP, Brokerage

495 Richmond Street, Unit 104, London, ON N6A 5A9

T +1 226 366 9090 F +1 866 541 9755

**AVISON
YOUNG**

**BEST
MANAGED
COMPANIES**

Platinum member