

1000

N. SHORELINE BOULEVARD
MOUNTAIN VIEW, CALIFORNIA

±21,862 SF STANDALONE R&D BUILDING

CLAYTON JONES 650.473.4774 clayton.jones@nmrk.com CA RE License #O2014728

JOE KELLY 408.314.7710 joe.kelly@nmrk.com CA RE License #O1420963

NEWMARK

The distributor of this communication is performing acts for which a real estate license is required. The information contained herein has been obtained from sources deemed reliable but has not been verified and no guarantee, warranty or representation, either express or implied, is made with respect to such information. Terms of sale or lease and availability are subject to change or withdrawal without notice. 20-0898.07/23

The logo features the number '1000' in a stylized, bold font. The '1' is yellow, and the '000' are white with yellow outlines. The numbers are set against a background of a large, abstract mural with various colors and textures.

N. SHORELINE BOULEVARD
MOUNTAIN VIEW, CALIFORNIA



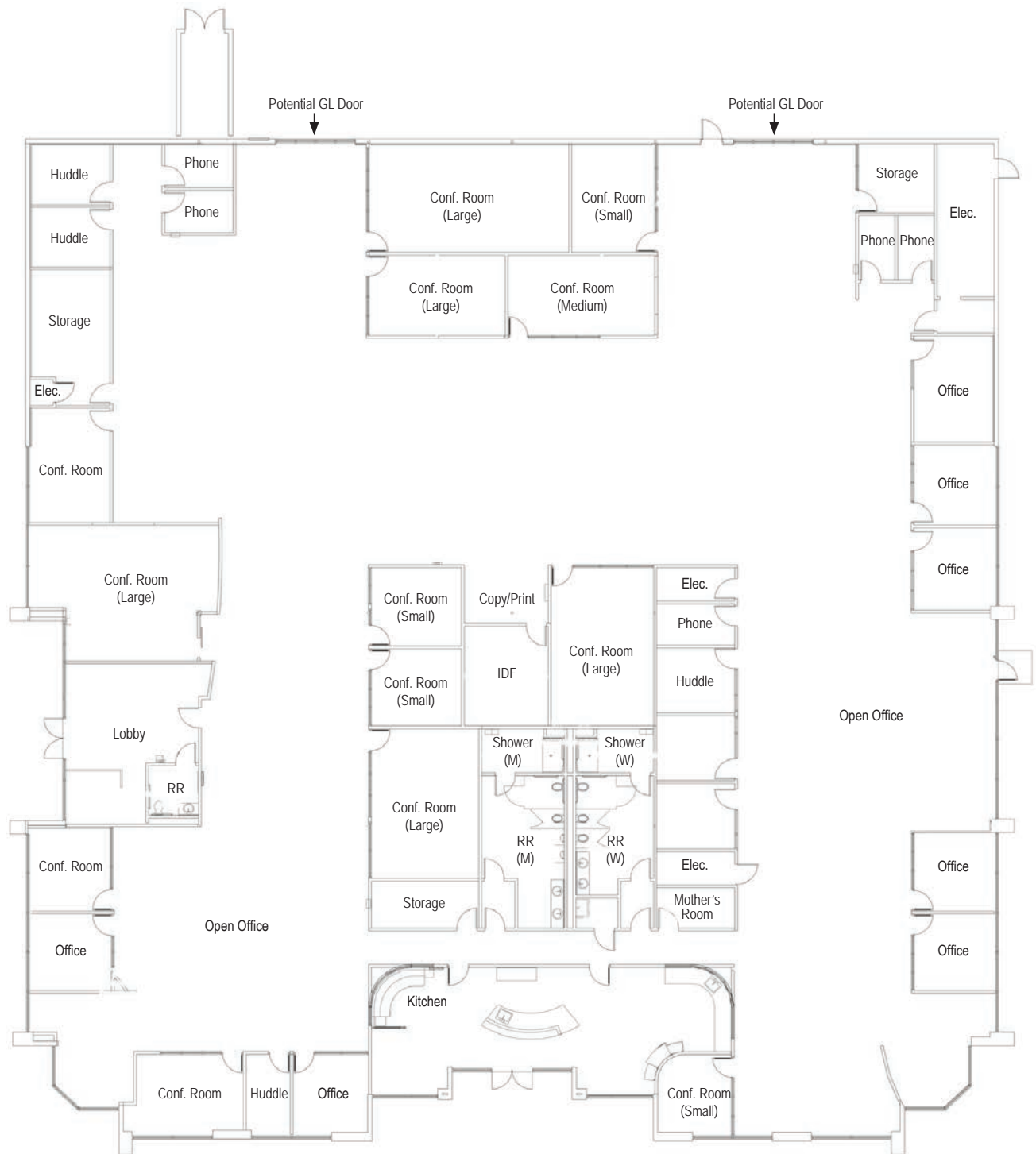
PROPERTY HIGHLIGHTS

- ±21,862 SF R&D Building
- High Identity Standalone Building with Large Monument Signage
- First Class Creative Technology Space with High Exposed Ceiling, Large Kitchen, Glass Privates and Great Natural Light
- Wellness Focused Workplace w/ Bike Racks, Usable Outdoor Lounge Areas, Basketball Hoops, and Showers
- 4 Parking Spaces per 1,000 RSF with EV Charging Stations
- 2 GL Doors Currently Glassed in That Can be Converted Back
- Available March 1, 2024 (Potentially as Early as November 2023)
- Flexible Lease Term
- Power: 800 Amps @ 480/277 Volts

1808

N. SHORELINE BOULEVARD
MOUNTAIN VIEW, CALIFORNIA

FLOOR PLAN



1000

N. SHORELINE BOULEVARD
MOUNTAIN VIEW, CALIFORNIA



PROPERTY PHOTOS



