

Gateway Industrial - Under Construction



9405 & 9445 Prototype Drive, Reno, Nevada 89521

BUILDING INFORMATION

- Available Q4 2024
- Zoning PD
- Rigid Metal Deck Roof
- ESFR Sprinklers

Building A (9405 Prototype)

- ±55,620 SqFt
- Build to Suit Office
- 12 Dock Doors
- 2 Drive-in Doors
- ±28 to 30' Clear Height (min)
- 1,200 Amps | 480/277 Volt | 3P
- 67 Parking Spaces

Building B (9445 Prototype)

- ±40,320 SqFt
- Build to Suit Office
- 7 Dock Doors
- 2 Drive-in Doors
- ±28 to 30' Clear Height (min)
- 1,200 Amps | 480/277 Volt | 3P
- 47 Parking Spaces

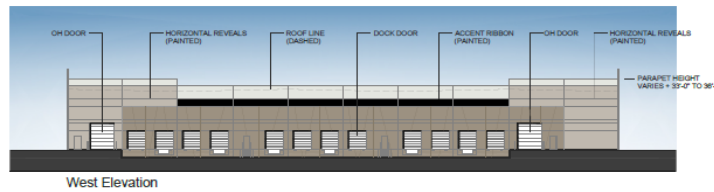
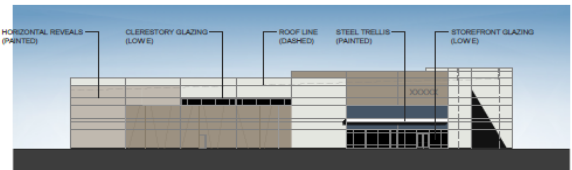
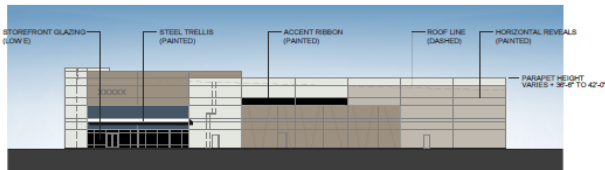
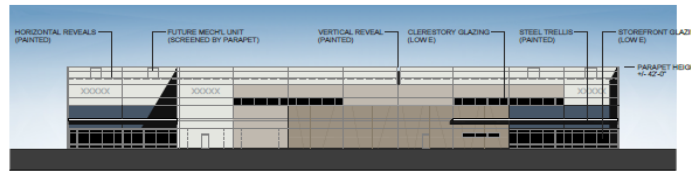
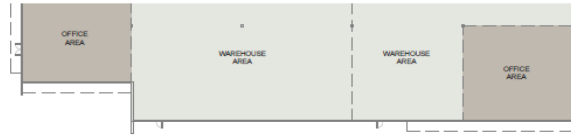


Justin W. Noin

justin@mckenzieproperties.com
 Phone: (775) 329-5181
 Cell: (775) 315-9088
 5520 Kietzke Lane #400
 Reno, NV 89511
 Lic #: B.1002722.CORP

Gateway Industrial - Under Construction

Bldg. A



Bldg. B

