

THE RALEIGH BUILDING

200 FAYETTEVILLE STREET

FOR LEASE

RETAIL SPACE

DOWNTOWN RALEIGH



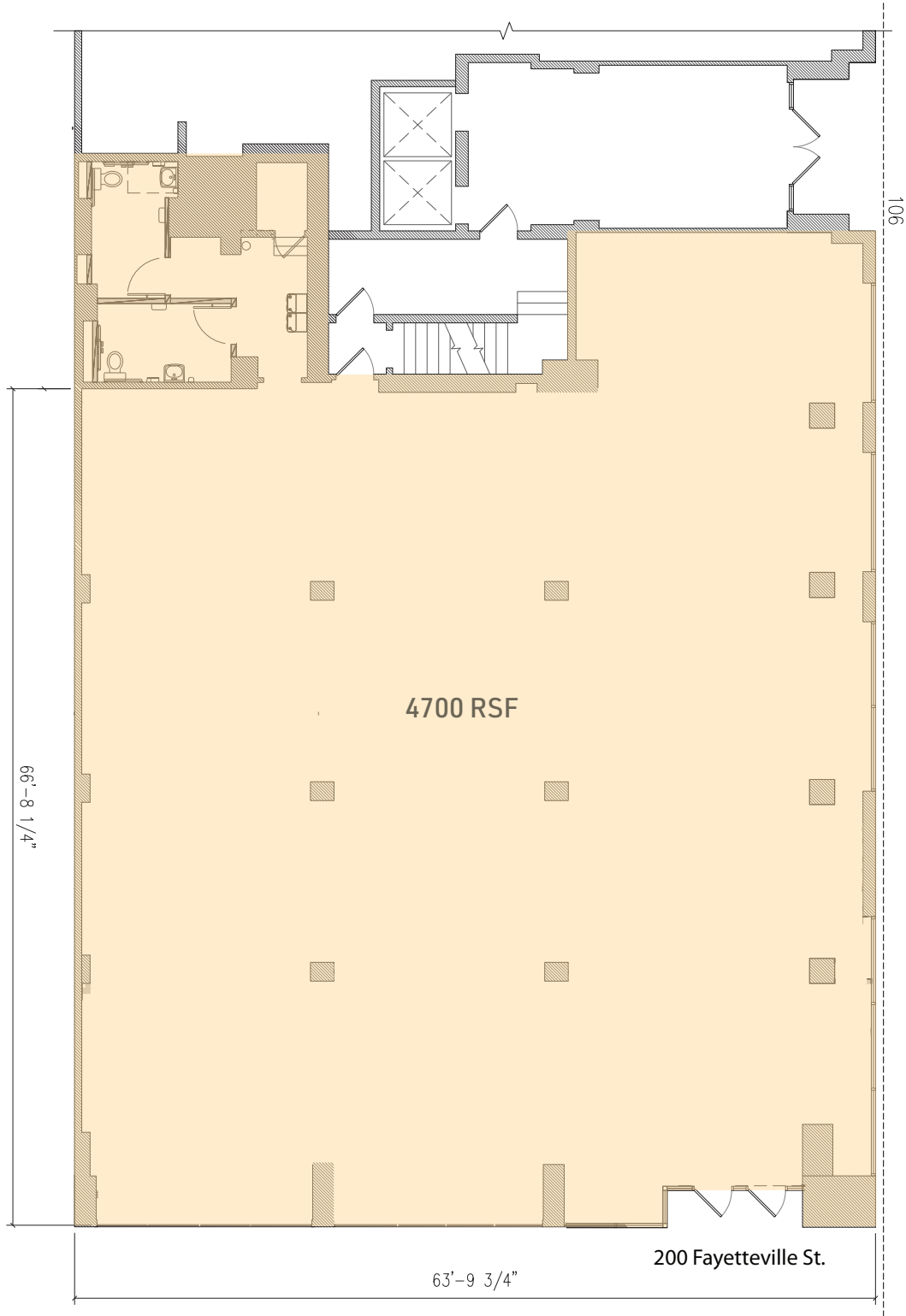
FIRST FLOOR: 4,700 RSF

- Ground level corner retail space on Fayetteville Street with unmatched visibility
- Spacious suite with an open floor plan and high ceilings
- Downtown location, steps away from all of Raleigh's urban amenities

FOR LEASING AND AVAILABILITY

commercial@empire1792.com | 919-834-8350
Empire Brokerage Services, Inc.





FOR LEASING AND AVAILABILITY

commercial@empire1792.com | 919-834-8350
Empire Brokerage Services, Inc.



THE RALEIGH BUILDING

200 FAYETTEVILLE STREET

FOR LEASE

RETAIL SPACE

DOWNTOWN RALEIGH



1936



2022

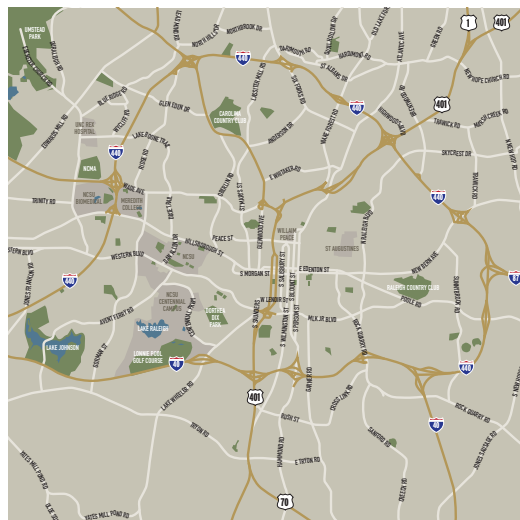
FOR LEASING AND AVAILABILITY

commercial@empire1792.com | 919-834-8350
Empire Brokerage Services, Inc.



RETAIL SPACE

DOWNTOWN RALEIGH



LOCATION

- Centralized, downtown location on Fayetteville Street near the City Plaza, Nash Square, Moore Square, and NC State Capitol
- Three parking decks within 1 block radius
- Steps from restaurant and entertainment amenities

FOR LEASING AND AVAILABILITY

commercial@empire1792.com | 919-834-8350
Empire Brokerage Services, Inc.

