

OFFICE SPACE FOR LEASE

1251 N PLUM GROVE RD, SCHAUMBURG, IL

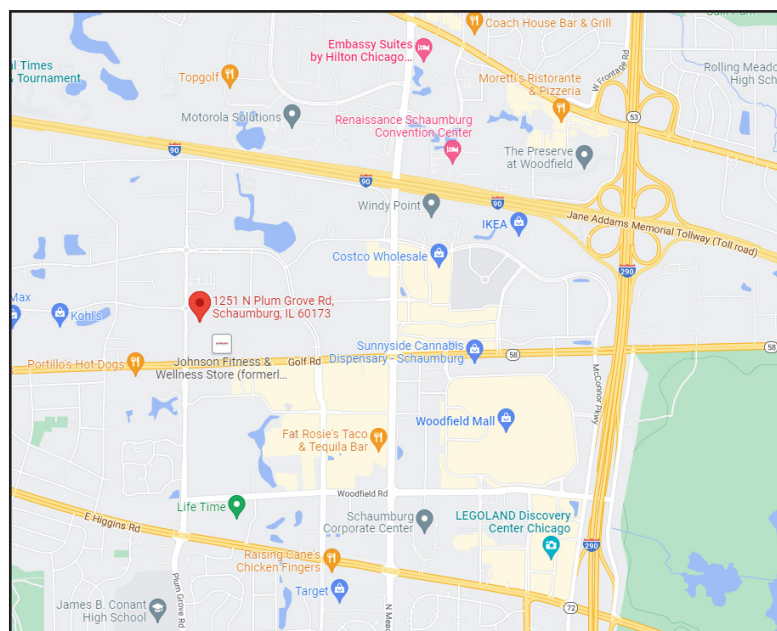


BUILDING FEATURES:

- 145 - 4,916 SF Available
- Ample Parking
- Tenant controlled HVAC
- Hotels, Shopping and Dining nearby
- Convenient Tollway Access
- Comcast high-speed internet available
- Onsite Ownership and Management
- Beautiful Courtyard and Ornamental Landscaping
- **Rental Rate: \$11.50 - \$13.50 Modified Gross**

AVAILABLE SPACE:

SUITE	SIZE	CONTIGUOUS/DETAILS
120-D*	350 RSF	Private Office W// window - \$525 per Month
130-K*	225 RSF	Interior Office \$400 Per Month
130-L*	225 RSF	Interior Office \$400 per Month
130-Q*	145 RSF	Private Office W/ window \$500 per month
*Suites include all utilities & Wi-Fi Access!!!!		
170	4,916	Open Office Area w/ great window line & large conference room



FOR MORE INFORMATION:

RANDY OLCZYK
Direct: 847.246.9611
randy@chicagolandcommercial.com

RAY OKIGAWA
Direct: 847.246.9632
ray@chicagolandcommercial.com

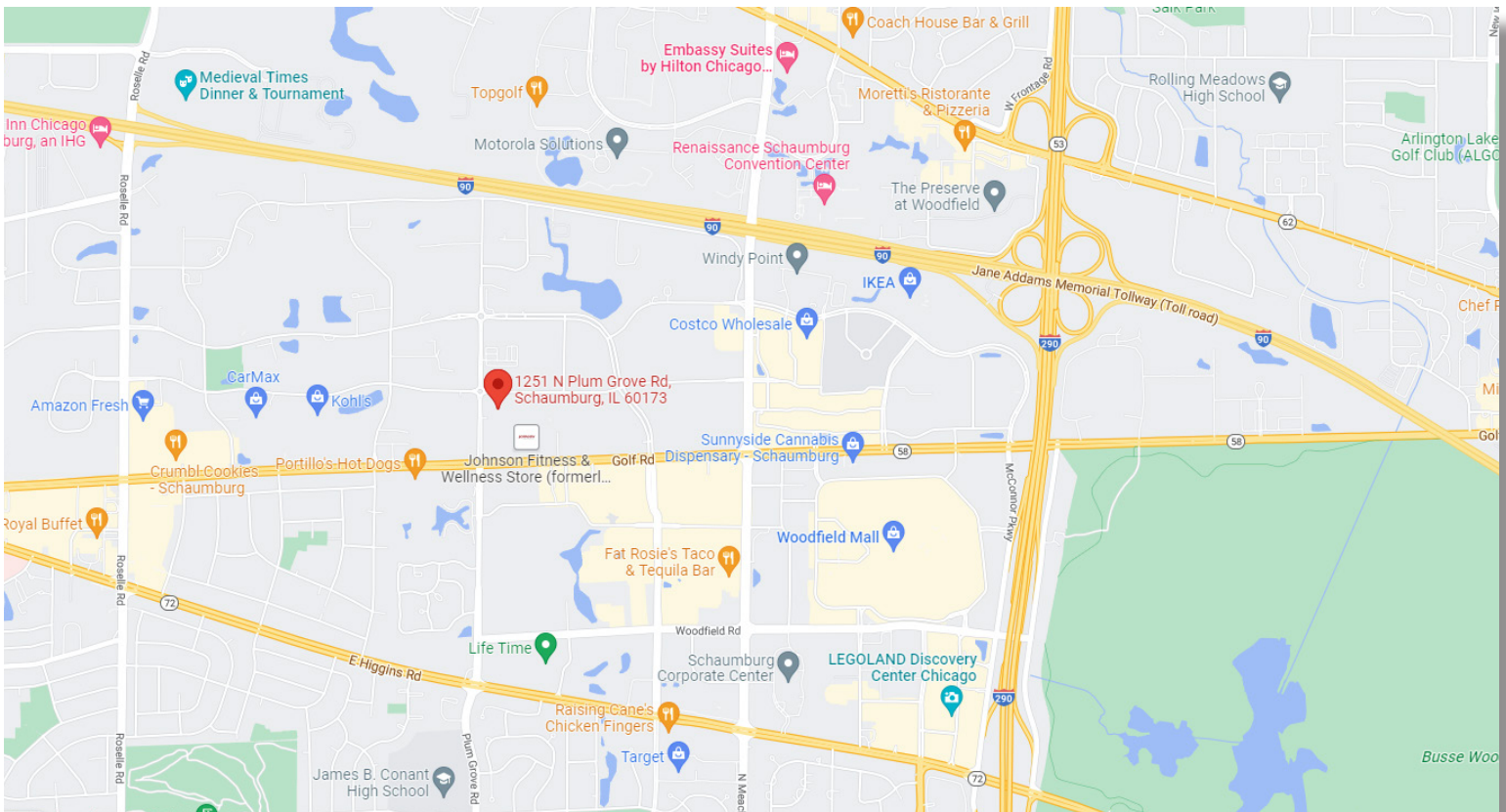
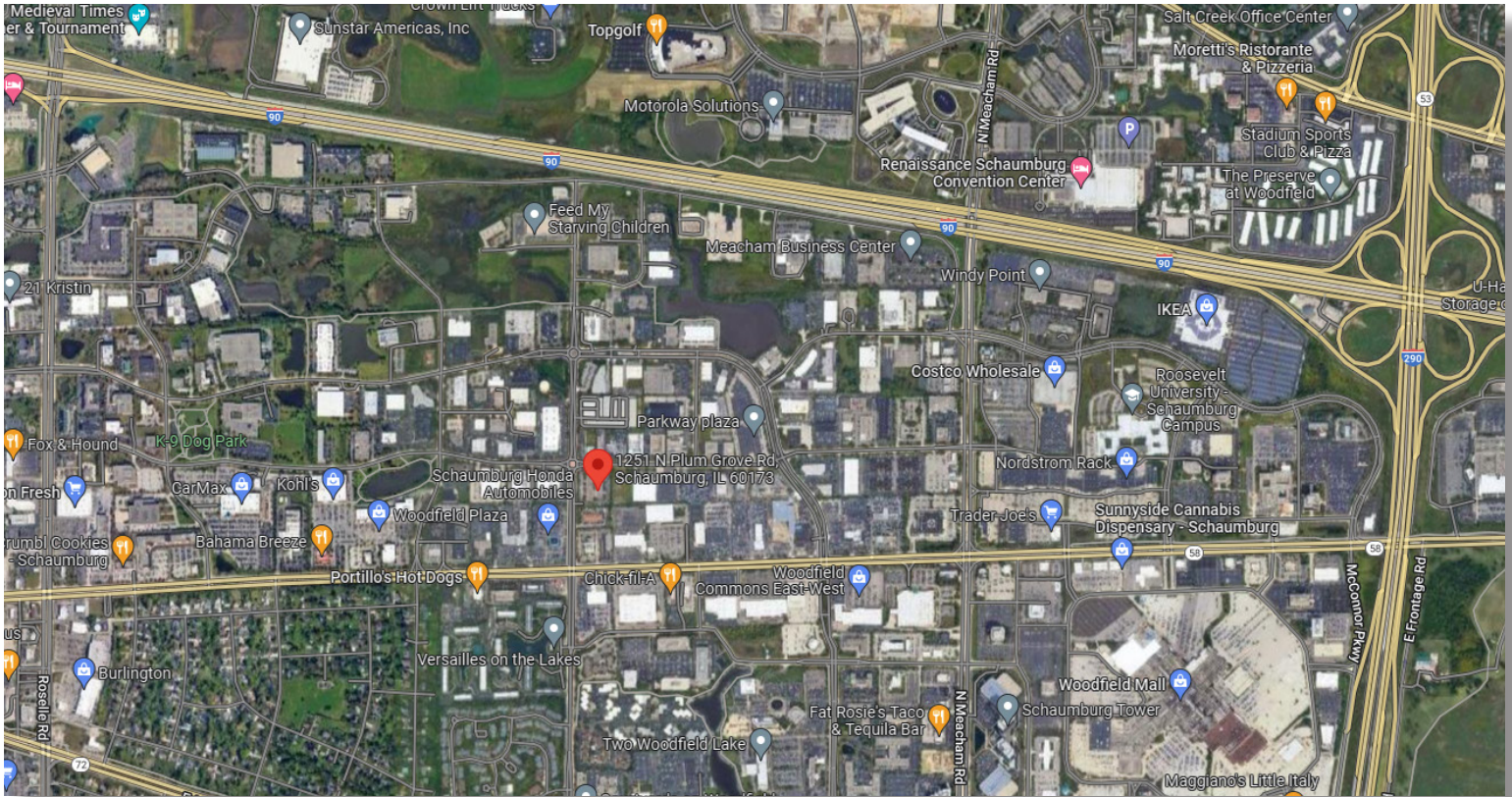


4811 Emerson-Suite 112, Palatine, IL 60067

OFFICE SPACE FOR LEASE

1251 N PLUM GROVE RD, SCHAUMBURG, IL

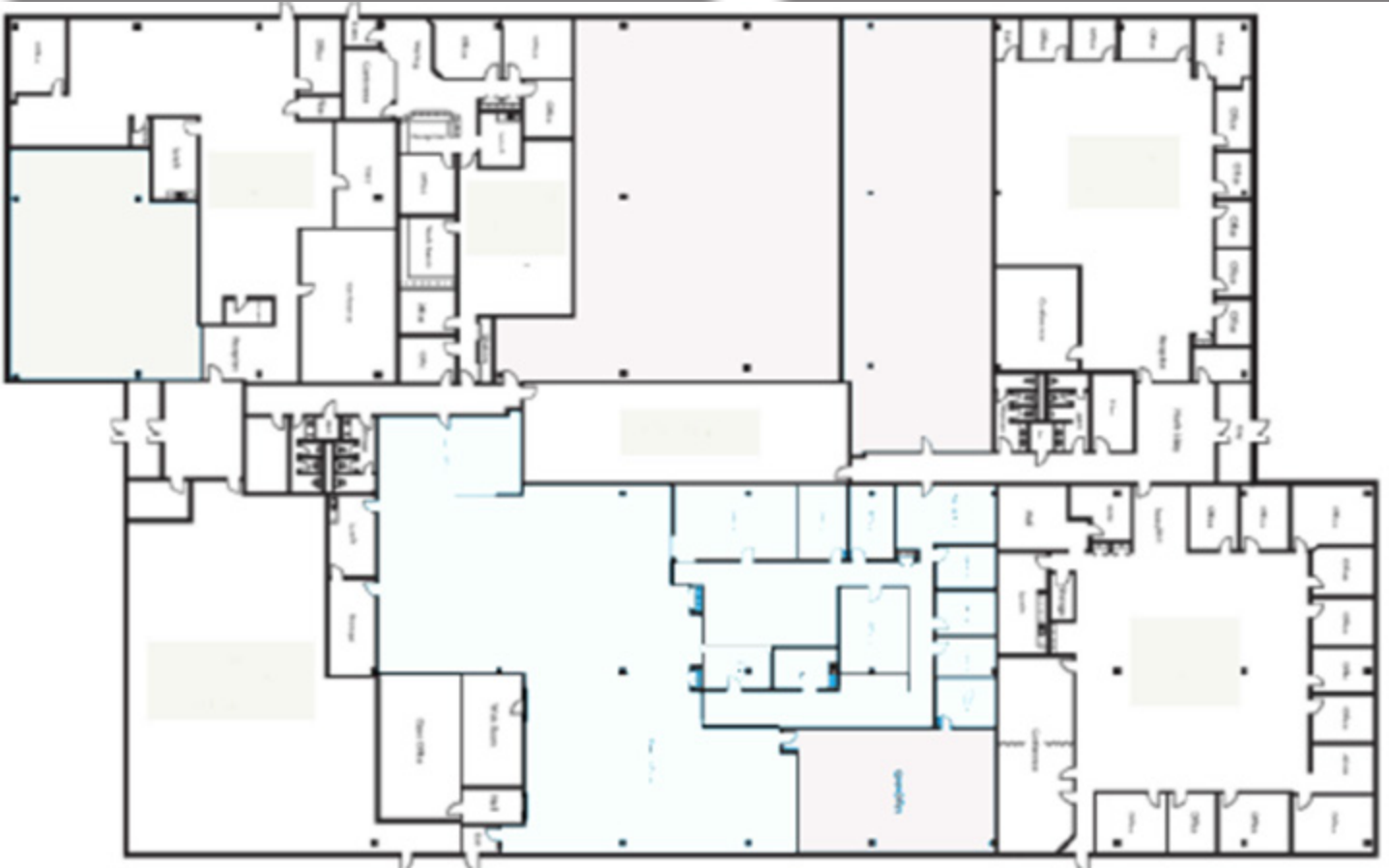
AREA MAPS



OFFICE SPACE FOR LEASE

1251 N PLUM GROVE RD, SCHAUMBURG, IL

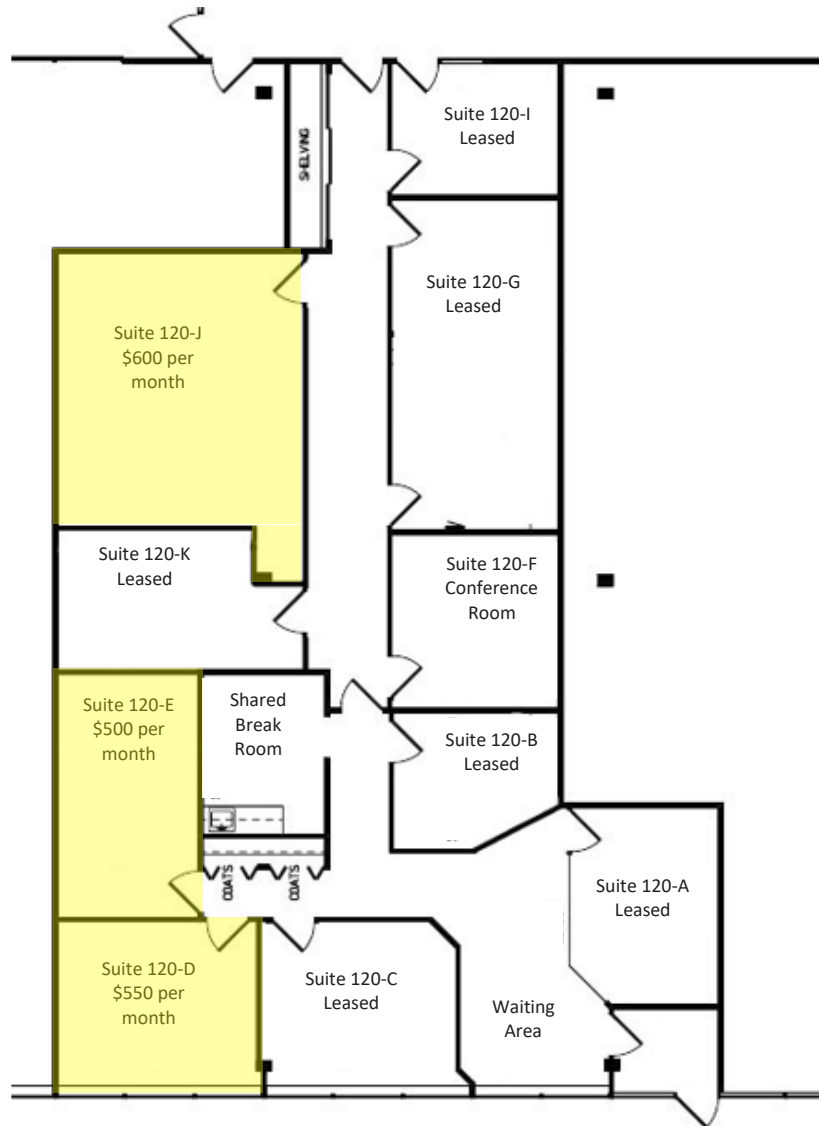
SITE PLAN



OFFICE SPACE FOR LEASE

1251 N PLUM GROVE RD, SCHAUMBURG, IL

FLOOR PLAN - SUITES 120 170-350 RSF



1251 N. Plum Grove Rd
Suite 120

Suite	Dimensions	Approximate Usable SF	Monthly Rent	Window
120-D	14' x 11'-9"	170	\$550	yes
120-E			\$500	no
120-J			\$600	no

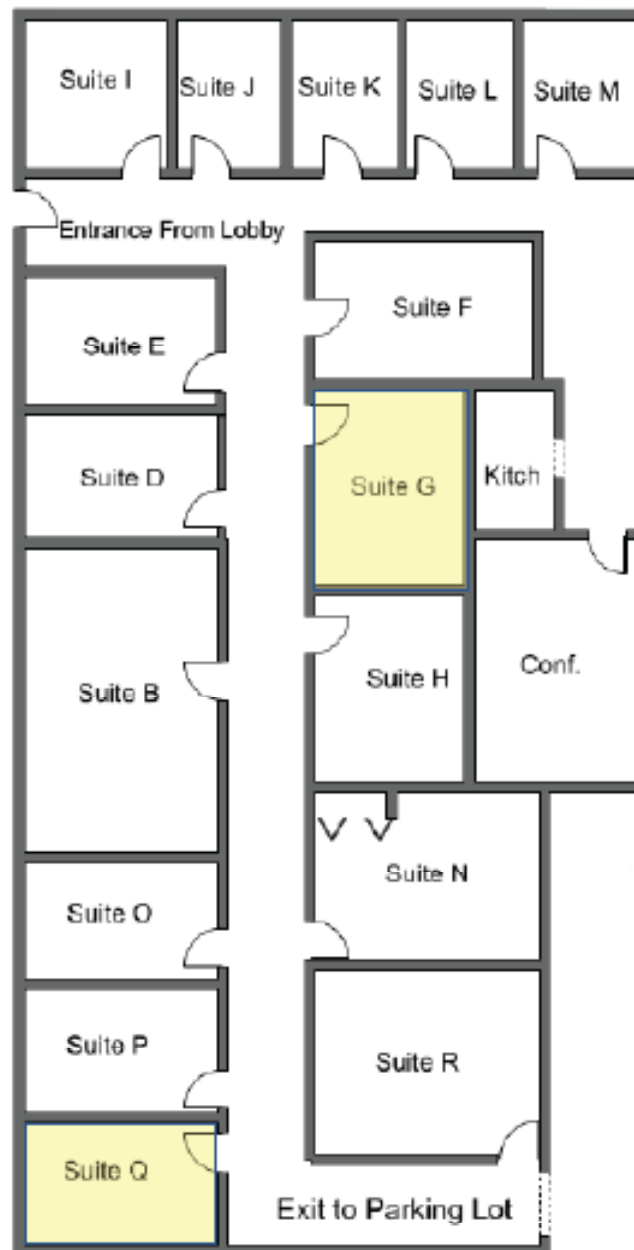
*Rentable SF includes use of common areas including kitchen, conference room, & reception areas

Monthly Rent includes heating, cooling, & electricity.

OFFICE SPACE FOR LEASE

1251 N PLUM GROVE RD, SCHAUMBURG, IL

FLOOR PLAN - SUITES 130
225-700 SF



Suite	Dimensions	Approximate Usable SF	Monthly Rent	Window
130-G	13'-7" x 11'-5"	155	\$475	no
130-Q	9'-8" x 14'-8"	145	\$500	yes

WiFi available for \$35 per month

*Rentable SF includes use of common areas including kitchen, conference room, & reception areas

Monthly Rent includes heating, cooling, & electricity.

OFFICE SPACE FOR LEASE

1251 N PLUM GROVE RD, SCHAUMBURG, IL

FLOOR PLAN - SUITES 170
4,916 SF

