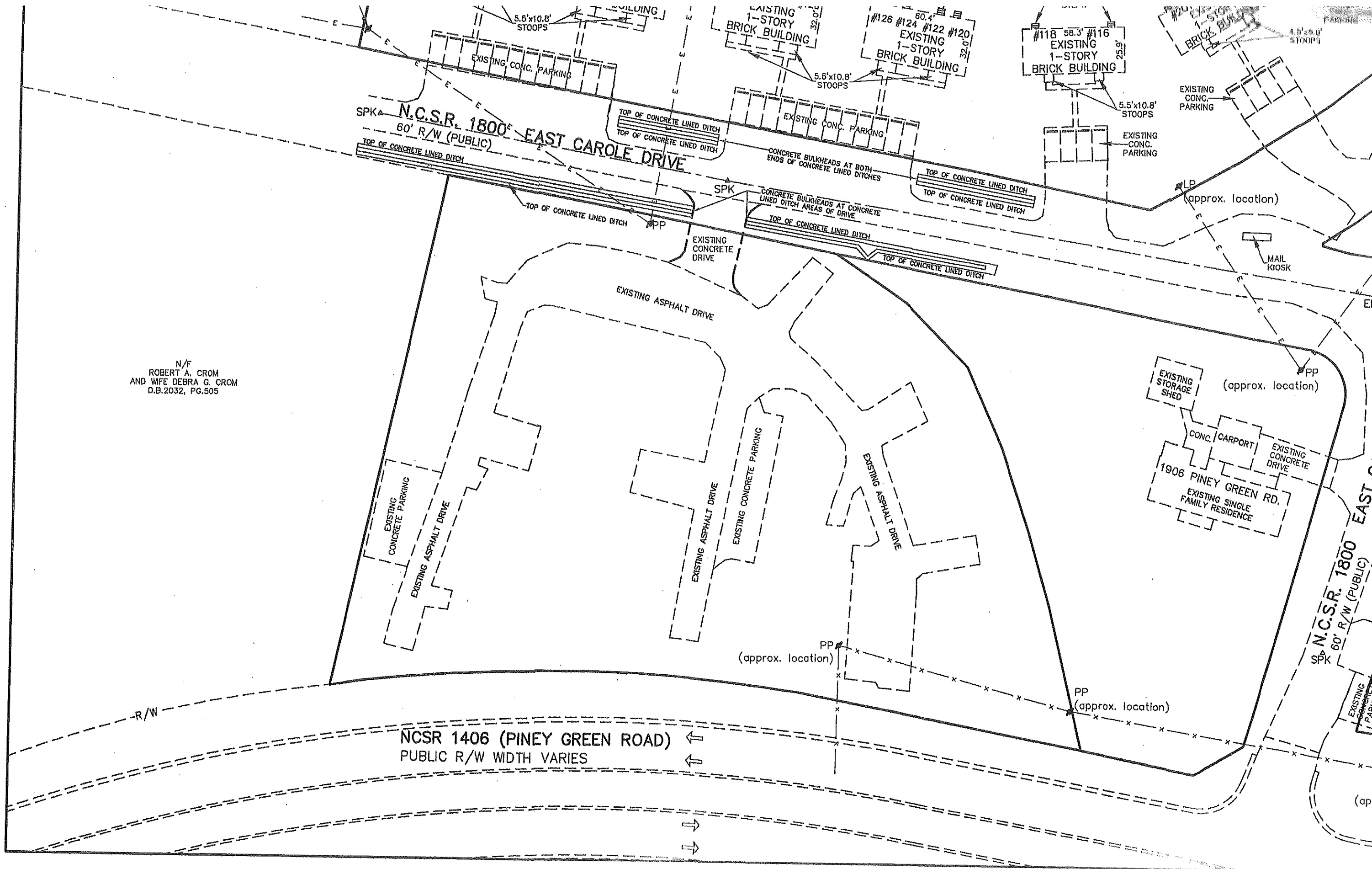


N/F  
ROBERT A. CROM  
AND WIFE DEBRA G. CROM  
D.B.2032, PG.505



N.C.S.R. 1800  
60' R/W (PUBLIC)  
EAST CAROLE DRIVE

NCSR 1406 (PINEY GREEN ROAD)  
PUBLIC R/W WIDTH VARIES

N.C.S.R. 1800  
60' R/W (PUBLIC)  
EAST CAROLE DRIVE