

OFFICE BUILDING FOR SALE



1106
UNIVERSITY
BLVD WEST

Silver Spring, MD
20902

PROPERTY HIGHLIGHTS

- 1,800± SF building on 1.55± acres
- Two stories, used for education and administration
- Direct access to University Blvd (Route 193)
- Surrounded by wooded land and dense residential communities
- Close to a wide variety of amenities, such as shopping, hospitals, parks, transit, and more
- Less than 5 minutes away from Wheaton-Glenmont, with the Westfield Wheaton Mall and Wheaton Metro station
- Quick access to the Sligo Creek Parkway, Capital Beltway (I-495), Route 29 (Colesville Road), and the Intercounty Connector (MD 200)



JAMES F. MIERS

301.605.3846
jmiers@naimichael.com

STEVE CATALANO

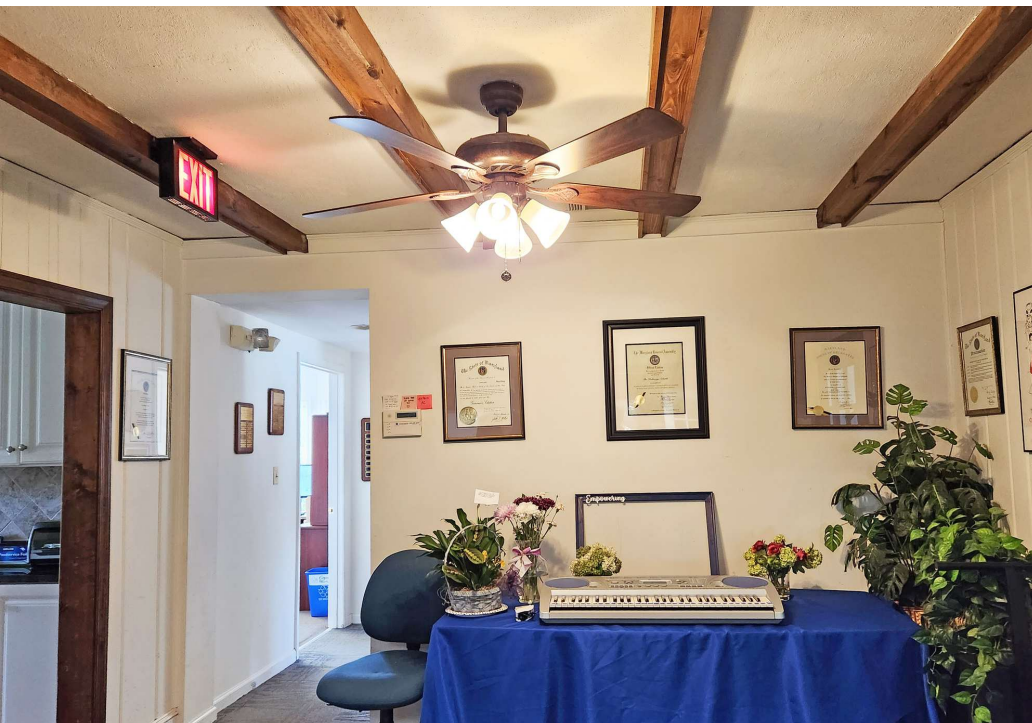
301.646.9310
scatalano@naimichael.com



10100 Business Pkwy | Lanham, MD 20706 | +1 301.459.4400 | naimichael.com

The information contained herein has been given to us by the owner of the property or other sources we deem reliable. We have no reason to doubt its accuracy, but we do not guarantee it. Floor plans, site plans and other graphic representations of this property have been reduced and reproduced, and are not necessarily to scale. All information should be verified prior to purchase or lease.

Office Building For Sale
1106 UNIVERSITY BLVD WEST, SILVER SPRING, MD 20902



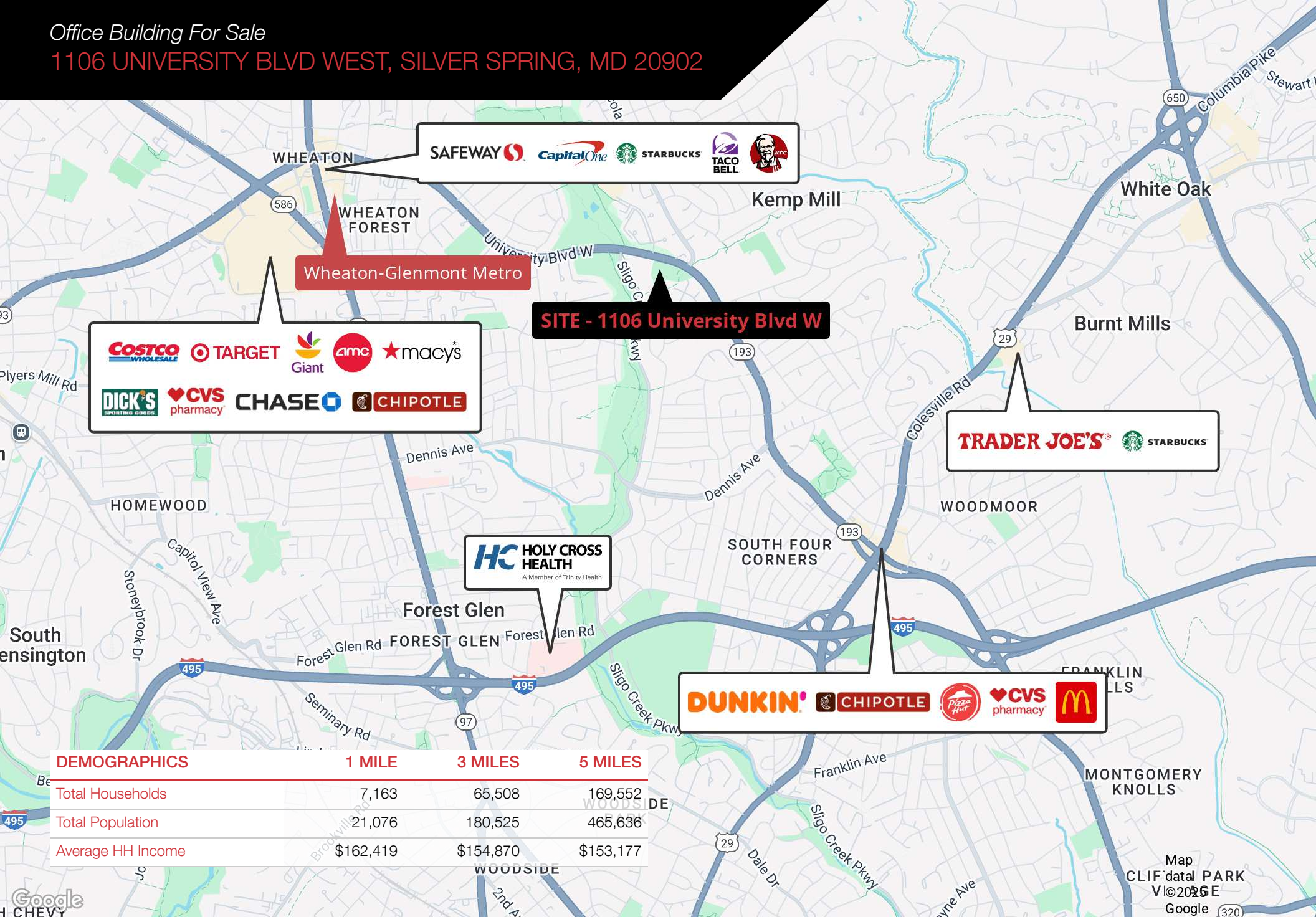
Naimichael

The information contained herein has been given to us by the owner of the property or other sources we deem reliable. We have no reason to doubt its accuracy, but we do not guarantee it. Floor plans, site plans and other graphic representations of this property have been reduced and reproduced, and are not necessarily to scale. All information should be verified prior to purchase or lease.

JAMES F. MIERS
301.605.3846 | jmiers@naimichael.com

STEVE CATALANO
301.646.9310 | scatalano@naimichael.com

Office Building For Sale
1106 UNIVERSITY BLVD WEST, SILVER SPRING, MD 20902



DEMOGRAPHICS

	1 MILE	3 MILES	5 MILES
Total Households	7,163	65,508	169,552
Total Population	21,076	180,525	465,636
Average HH Income	\$162,419	\$154,870	\$153,177

