

FOR SALE | SELF STORAGE FACILITY

688 Manchester Road | Belgrade, ME

PRICE REDUCTION



SELF STORAGE FACILITY

- Five building 100-unit self storage facility
- 16,000± SF existing with 23,100± SF expansion plans available
- Unit sizes range from 10x5' all the way up to 10x30'
- Great location in the Belgrade lakes region in Central Maine

SALE PRICE: ~~\$1,800,000~~ \$1,695,000



BRANDON MITCHELL
207.358.7057 D
207.415.7982 C
brandon@malonecb.com

MALONE COMMERCIAL BROKERS
5 Moulton Street • Suite 3
Portland, ME 04101
207.772.2422 • malonecb.com

PROPERTY SUMMARY

688 Manchester Road | Belgrade, ME



OWNER: All Purpose Storage Belgrade LLC

LOT SIZE: 6.78± AC

DEED: Book 14309, Page 326

UTILITIES: Drilled well; septic system

BUILDING SIZE: Existing: 16,000± SF
Proposed: 23,100± SF
Total: 39,100± SF

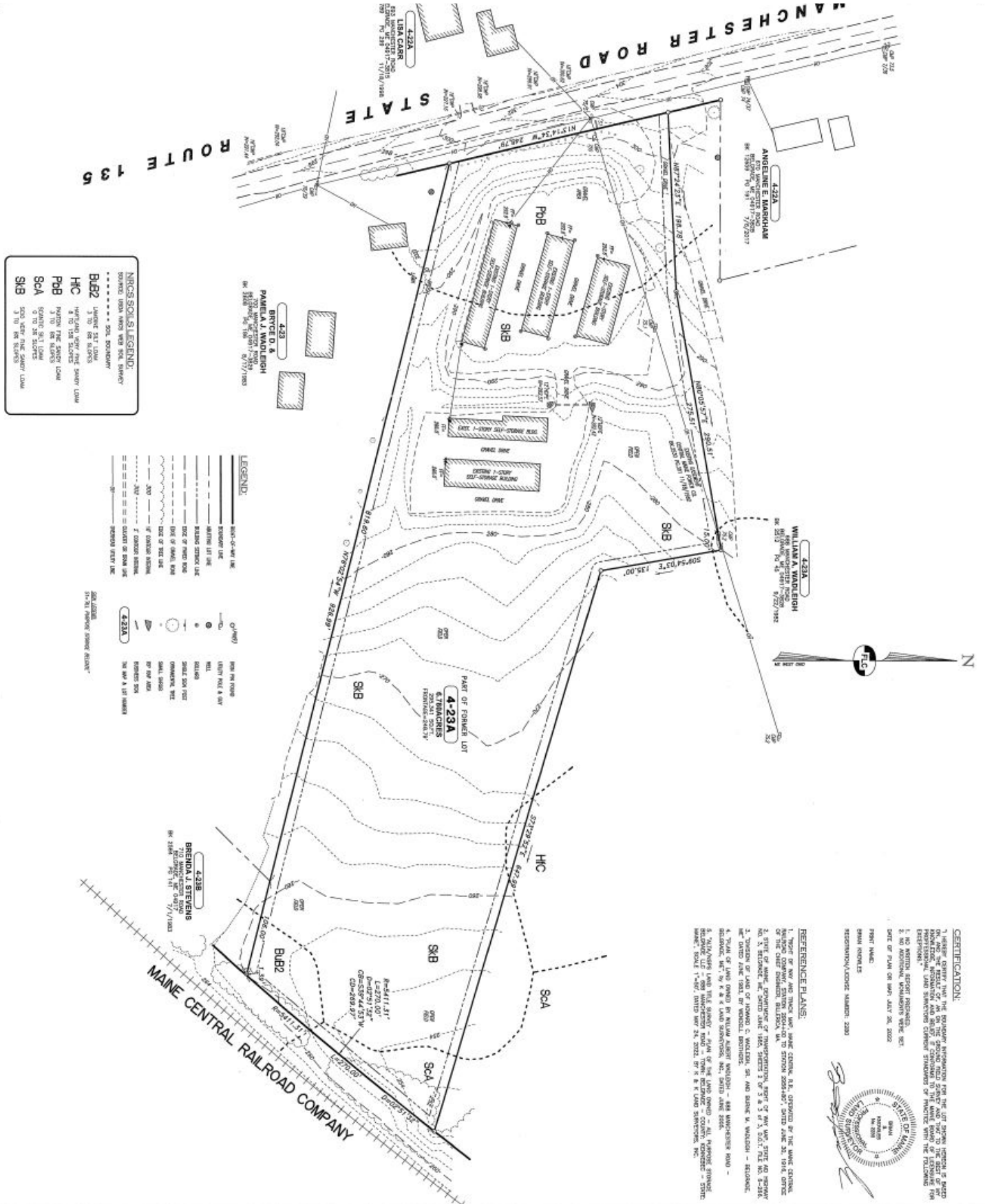
ZONING: Rural

SALE PRICE: \$1,695,000



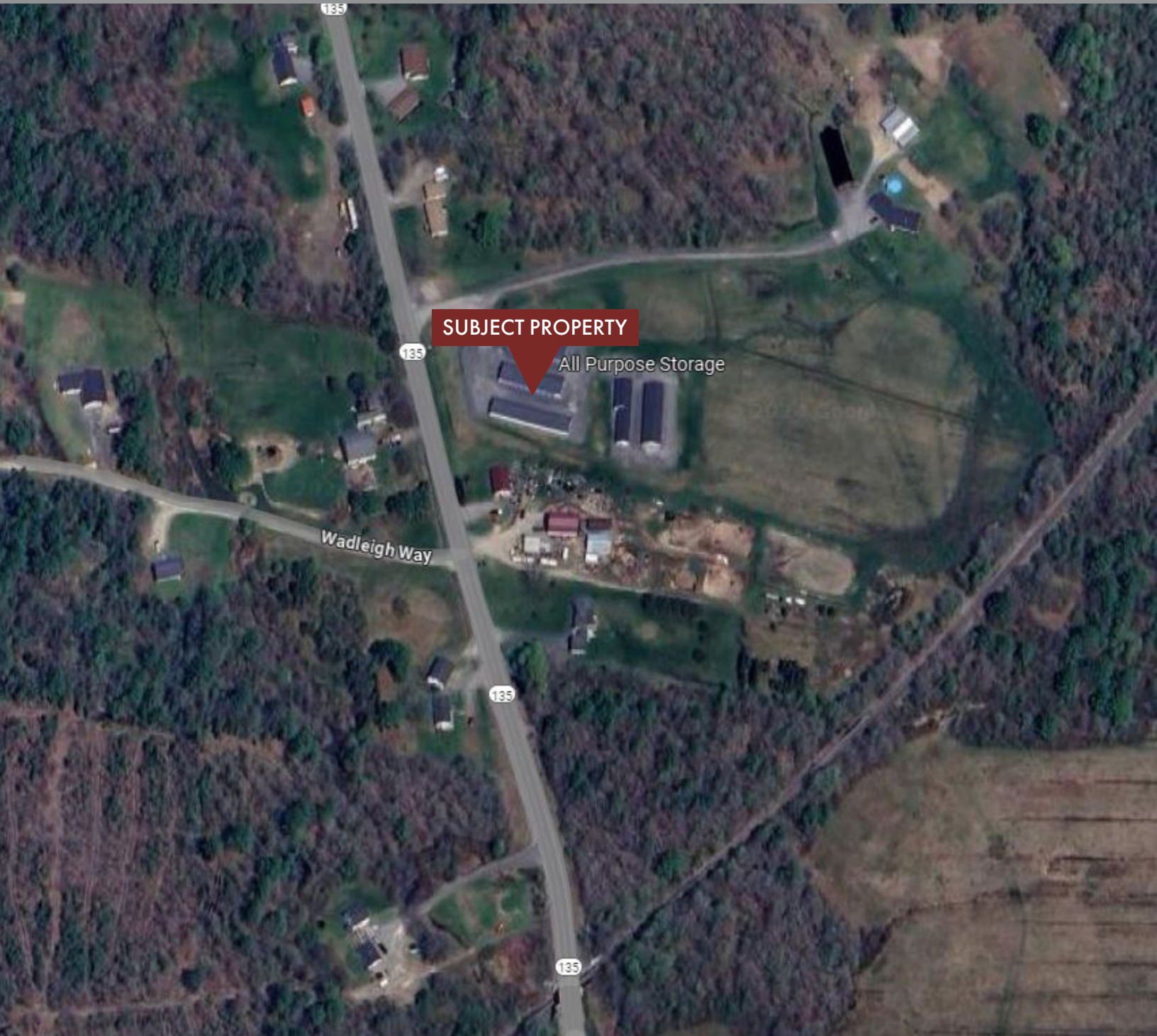
EXISTING SITE PLAN

688 Manchester Road | Belgrade, ME



FOR SALE | SELF STORAGE FACILITY

688 Manchester Road | Belgrade, ME



This document has been prepared by Malone Commercial Brokers for advertising and general information only. Malone Commercial Brokers makes no guarantees, representations or warranties of any kind, expressed or implied, regarding, but not limited to, warranties of content, accuracy, and reliability. Any interested party should undertake their own inquiries as to the accuracy of the information. Malone Commercial Brokers excludes unequivocally all informed or implied terms, conditions and warranties arising out of this document and excludes all liability for loss and damages there from. All data is subject to change of price, error, omissions, other conditions or withdrawal without notice. Malone Commercial Brokers is acting as the Seller's/Lessor's agent in the marketing of this property.



BRANDON MITCHELL
207.358.7057 D
207.415.7982 C
brandon@malonecb.com

MALONE COMMERCIAL BROKERS
5 Moulton Street • Suite 3
Portland, ME 04101
207.772.2422 • malonecb.com