

LOCATION

Situated on shores of Humboldt Bay, Oyster Beach is only a short drive from the charming towns of Eureka and Arcata, as well as some of the best hiking, surfing, and biking in the country. Redwood National and Redwood State Parks are easy day trips from the Humboldt Bay Social Club. Humboldt County is also renowned for its local food and drink scene, with dozens of breweries, distilleries, wineries, and cheese and chocolate makers who open their doors for gourmet tours.

The Humboldt Bay Social Club is 20 minutes from California Redwood Coast-Humboldt County Airport. It is a 5 hours drive from San Francisco and Sacramento.



EXECUTIVE SUMMARY

Oyster Beach offers guests a sense of privacy and seclusion while still being located within minutes from the charming towns of Arcata and Eureka. The region's top attractions are Redwood National Park and Redwood State Park. Humboldt State University, Victorian Village of Ferndale, North Coast beaches, and the wild and scenic rivers draw visitors year-round. Oyster Beach offers potential buyers exciting marketing and advancement opportunities.





O Y S T E R B E A C H

P R O P E R T Y P R O F I L E

Address 865 and 855 New Navy Base Rd. Samoa,
CA 95564

APN: 401-141-003

Acres: 22.7 bayfront acres (14 acres on land and
7 acres in Humboldt Bay)

Zoning: MC Industrial Coastal-Dependent
(Current Legal Non-Conforming Ranch and
Vacation Rental)

Built: 1860

Community Water, Septic, LP gas, Electric Service

2022 Gross Revenue:

Lodging	\$193,920
Events	\$113,314

Lease, across the street,
Humboldt Bay Social Club:

Lodging:	\$237,061
Bar:	\$146,604
Food:	\$ 77,041
Retail:	\$ 30,588



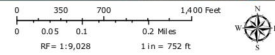
865 New Navy Base Rd



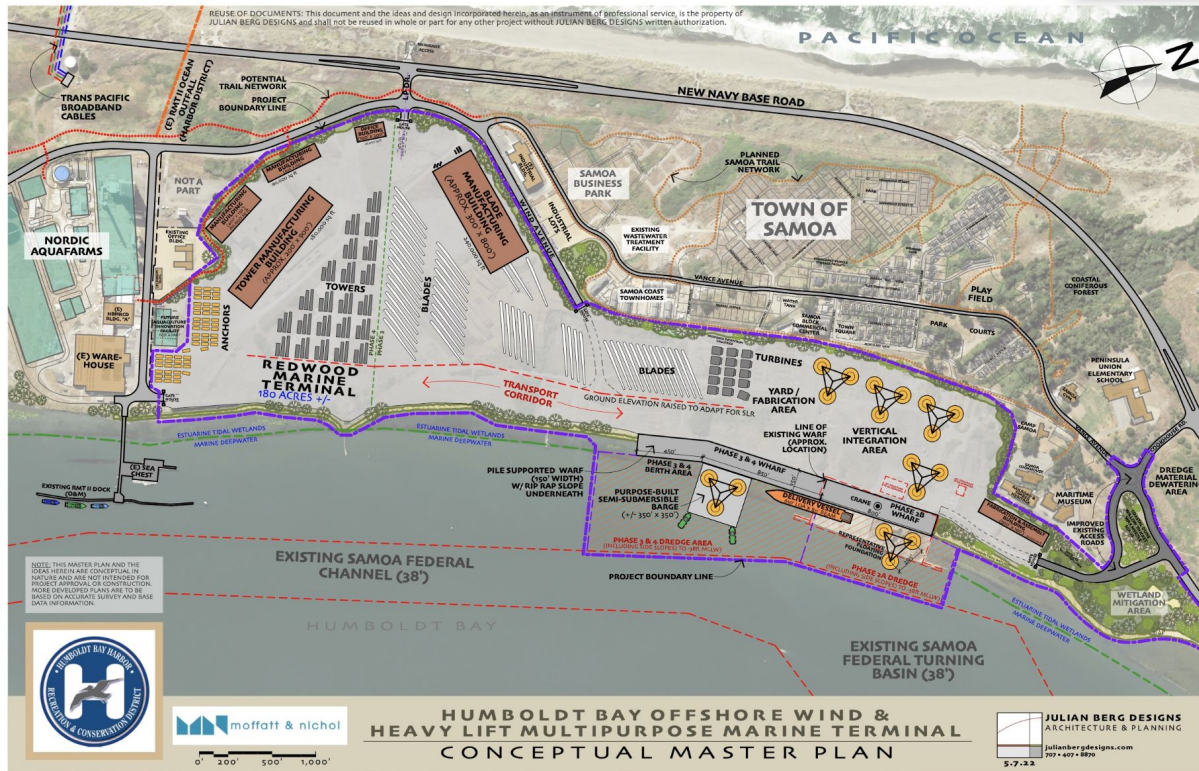
ArcGIS Web Map

Humboldt County Planning and Building Department

- | | | |
|---------------------|--------------------------|-------------------------|
| Highways and Roads | Private or Unclassified | Intermittent |
| Principal Arterials | Major River or Stream | Subsurface |
| Minor Arterials | Blue Line Streams | City Boundary |
| Major Collectors | Perennial 1-3 | Counties |
| Minor Collectors | Perennial >4 | Parcels |
| Local Roads | | Parcels (no APN labels) |



Printed: July 15, 2023
 Web AppBuilder 2.0 for ArcGIS
 Map Disclaimer:
 While every effort has been made to assure the accuracy of this information, it should be understood that it does not have the force & effect of law, rule, or regulation. Should any difference or error occur, the law will take precedence.
 Source: Humboldt County GIS, Esri, HERE, Garmin, (c) OpenStreetMap contributors, and the GIS user community, Source: Esri, Maxar, Earthstar Geographics, and the GIS User Community



Port Development

Humboldt Bay Marine Terminal is 2 miles down the peninsula from Oyster Beach. There are three large scale projects currently in development and underway.

1. Transpacific Broadband Cable landing. This is the world's longest fiber optic cable, bringing next generation internet to the county.
2. Nordic Aquafarms is developing a \$500m on-land fish farm at the port.
3. Humboldt Marine Terminal will be the home to a \$7,160m state and federal offshore wind project estimated to start construction in the next 5 years.



OYSTER BEACH UNITS

Waterfront 1: 871 sf

Loft 3: 600 sf

Ranch House and Suite 4: 2848sf

Cabin: 222 sf

Indoor/Outdoor Bathhouse

OYSTER BEACH BAYFRONT PROPERTY

22.7 acres.





SPACES

OYSTER BEACH BAYFRONT PROPERTY

22.7 acres. 14.7 acres on land and 7 acres in the water.



OYSTER BEACH #1

Beachfront 1940s caretaker's cottage.



OYSTER BEACH #3

Wooded 1900s servants quarters. King in the sleeping loft. Sleeper sofa in the living room. 1 bath. Sleeps 4.
Bathhouse and clubhouse access.



OYSTER BEACH #4

Wooded east wing of 1860s Ranch House. 2 Bedroom with Queen. 1 bath. Sleeps 4. Private entrance and deck.
Bathhouse and clubhouse access.



OYSTER BEACH RANCH HOUSE

Wooded 1860s Ranch house. 2 bedrooms (King and two twins that can be converted to King). 2 baths. Sleeps 4.



OYSTER BEACH #5

A rustic cabin with convertible couch and 2 loft beds (Full and Twin size). Outdoor shower and kitchen. Bathhouse, Social Club shower, and clubhouse access.



C O N T A C T



Founder and President

Jon O'Connor
jon@humboldt-social.com
858.692.3581