

# Refreshed & Unique Office/Retail Spaces For Lease

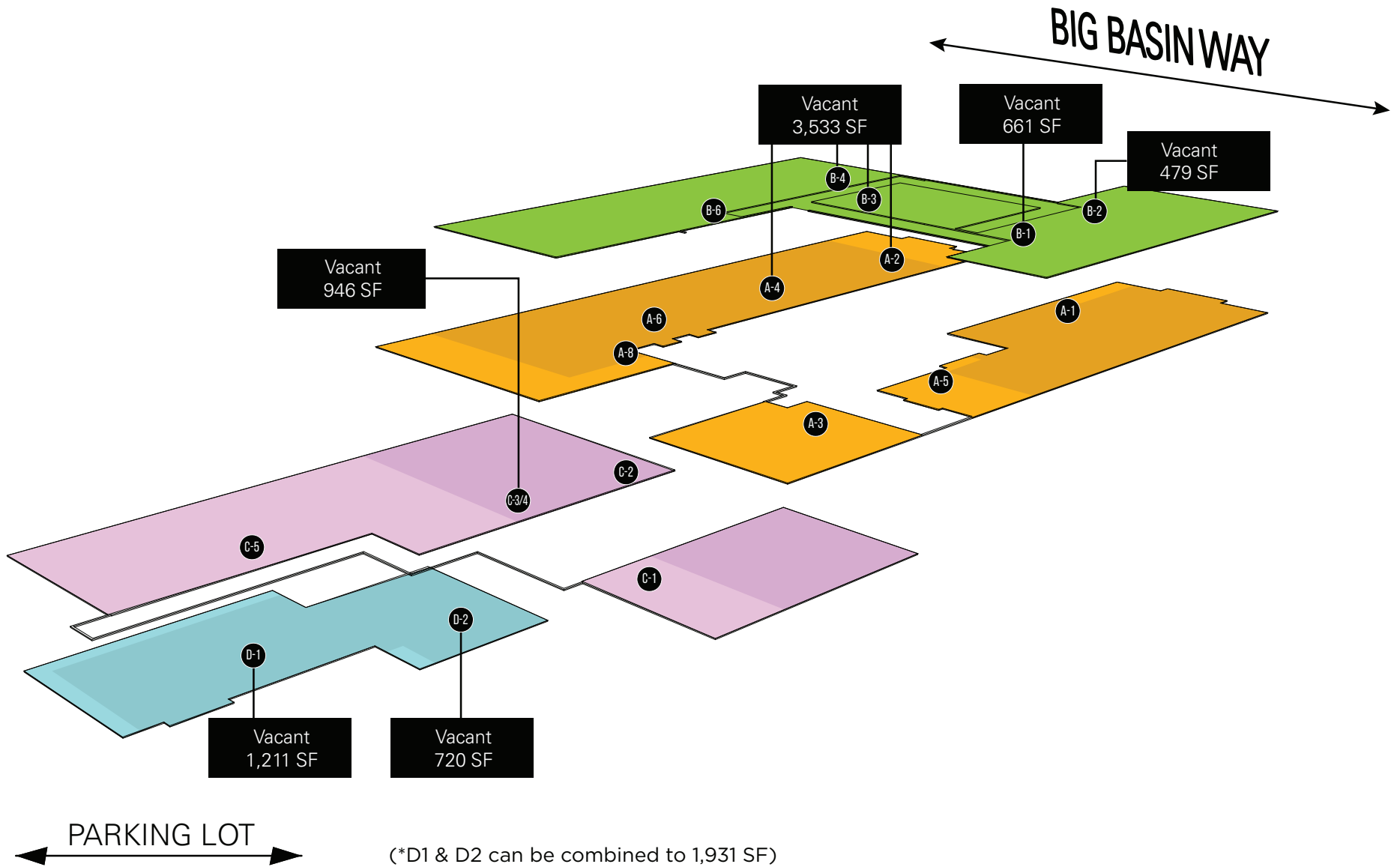
14567 BIG BASIN WAY, SARATOGA, CA



## Property Highlights

- Newly Renovated
- General Office, Medical & Retail Uses Welcome
- Options Ranging in Size from 479sf-3,533sf
- Flexible Lease Terms
- In the Heart of Amenity Rich Downtown Saratoga
- Market Ready Options Available
- Excellent Access to Highways 85, 17 & 9
- Call for Pricing & Touring Instructions

Stacking Image



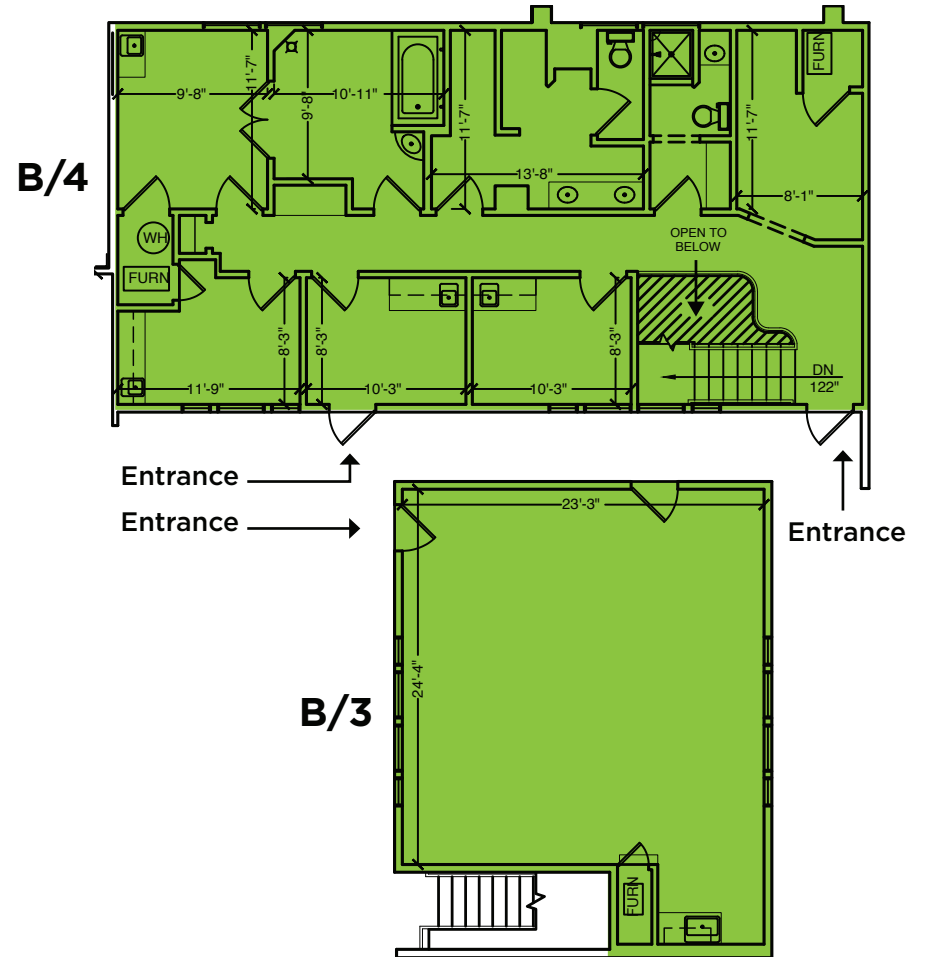
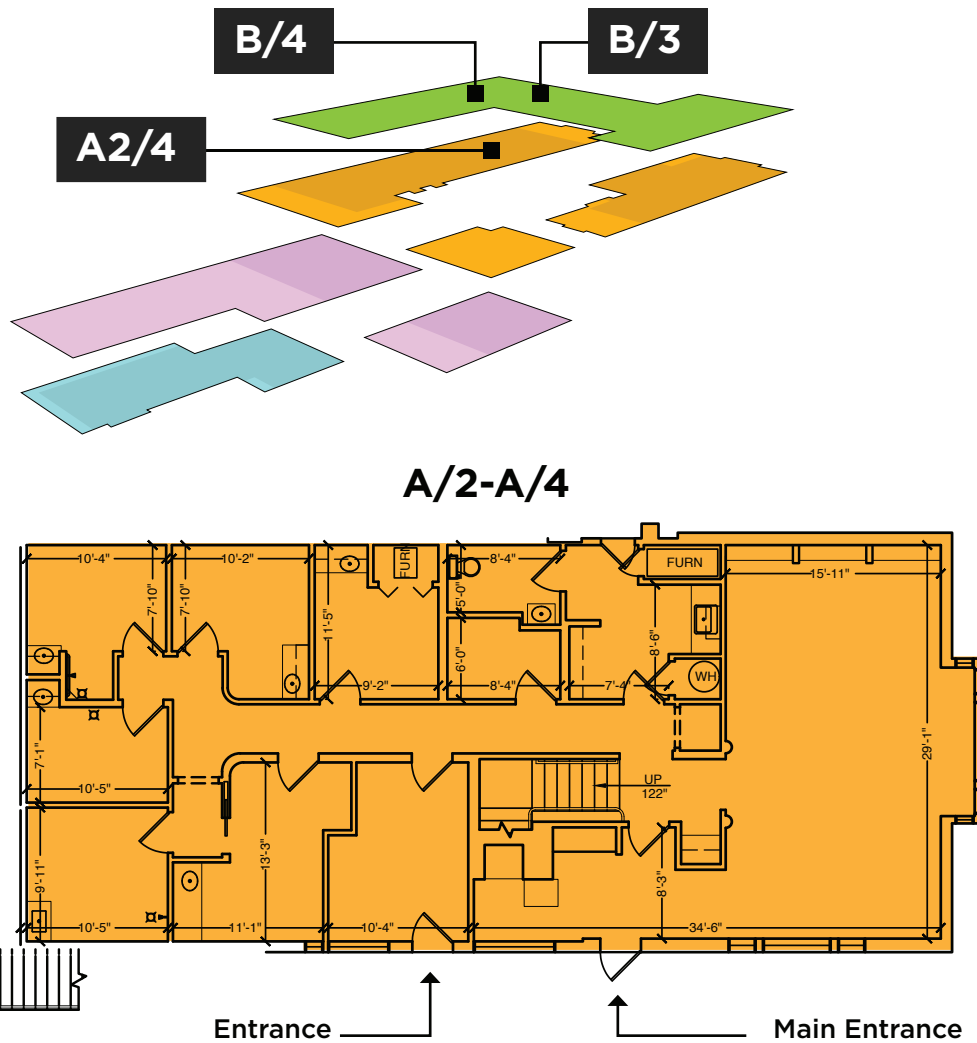
The distributor of this communication is performing acts for which a real estate license is required. The information contained herein has been obtained from sources deemed reliable but has not been verified and no guarantee, warranty or representation, either express or implied, is made with respect to such information. Terms of sale or lease and availability are subject to change or withdrawal without notice. MP-429 • 03/24

**Floor Plans**

**A2 & A4 + B3 & B4: 3,533 SF**

- 13 Privates (10 W/ Sinks)
- 4 Restrooms
- Locker Room
- 2 Kitchenettes
- Remainder Open Office

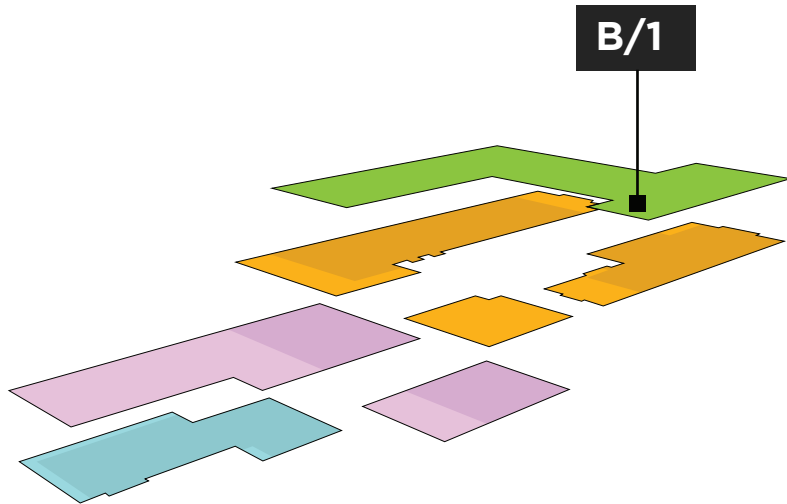
\*A2 & A4 are street level on Big Basin Way  
 \*B3 & B4 are on the 2nd story, facing Big Basin Way, above A2 & A4



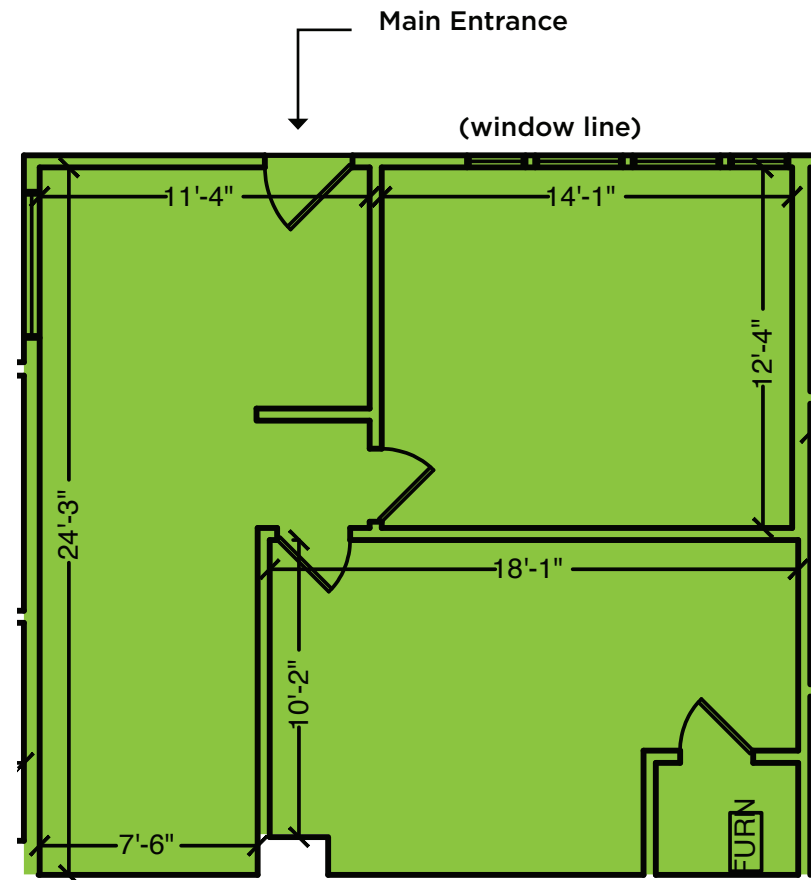
The distributor of this communication is performing acts for which a real estate license is required. The information contained herein has been obtained from sources deemed reliable but has not been verified and no guarantee, warranty or representation, either express or implied, is made with respect to such information. Terms of sale or lease and availability are subject to change or withdrawal without notice. MP-429 • 03/24

## Floor Plans

### B1: 661 SF

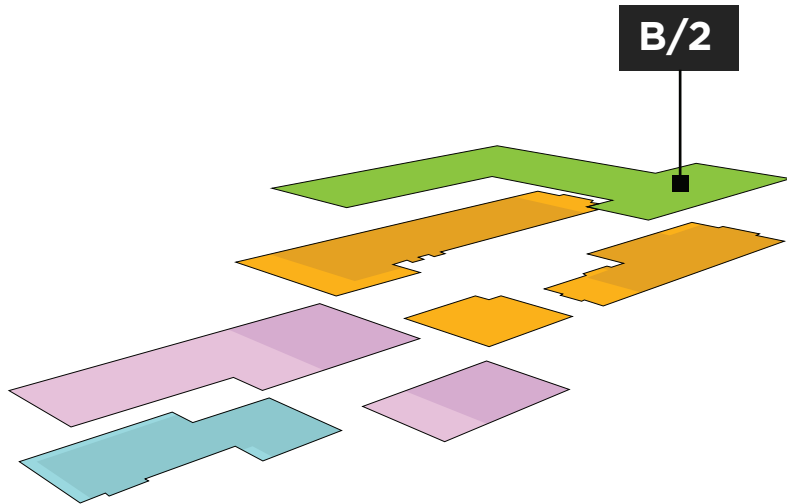


- 2 Privates
- Reception Area
- Ideal For Medical Use



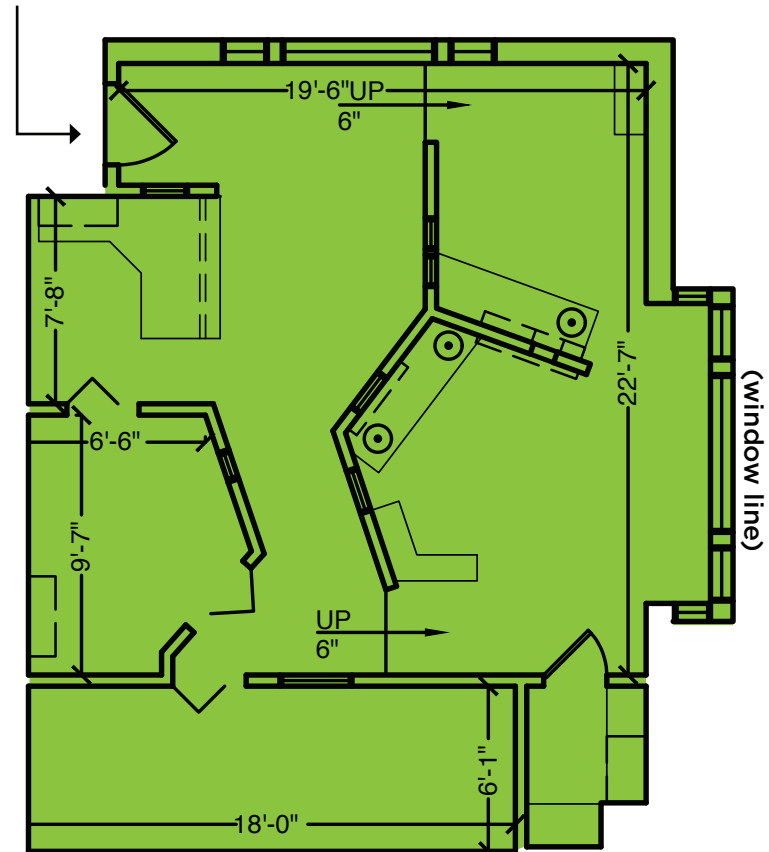
## Floor Plans

### B2: 479 SF



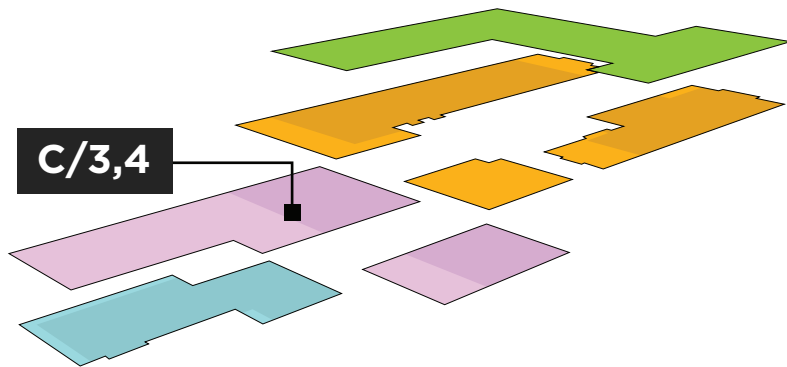
- Flexible Layout
- Multiple Sinks For Potential Medical Use
- Visibility On Big Basin Way

Main Entrance

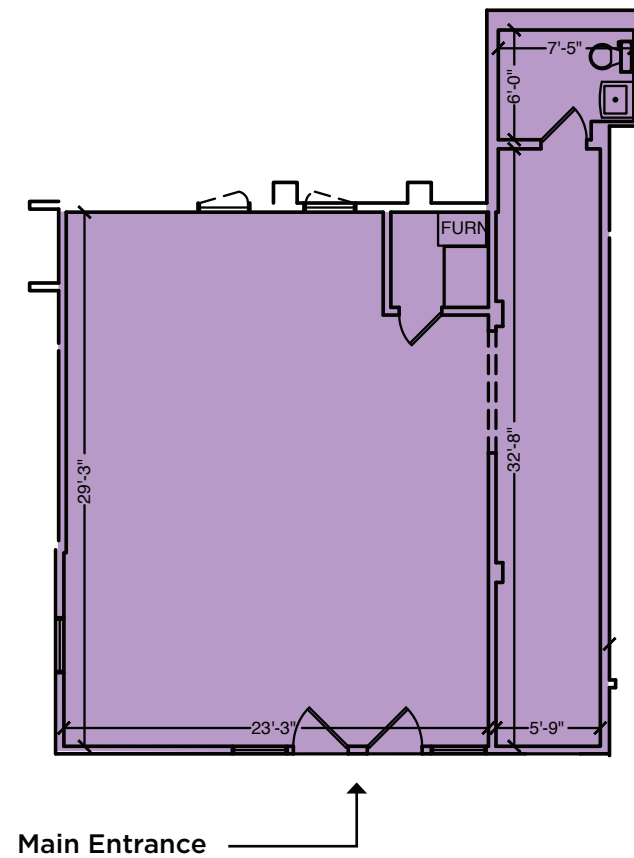


## Floor Plans

### C3/4: 946 SF



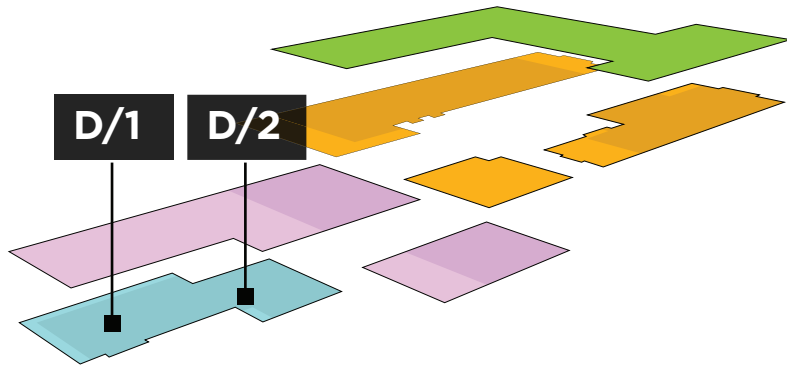
- 100% Open Office Layout
- Restroom (Exclusive To Suite)
- Ideal For Tech Start-Up



Floor Plans

D1: 1,211 SF

D2: 720 SF



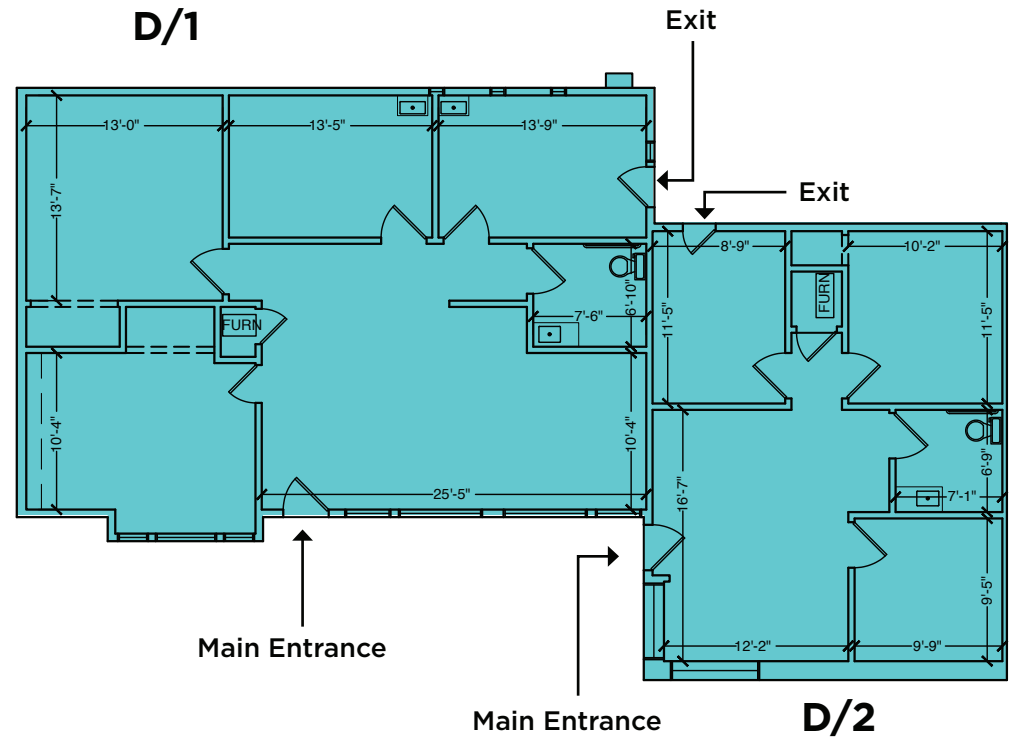
D1:

- 4 Privates
- Restroom (Exclusive To Suite)
- Remainder Open Office

D2:

- 3 Privates
- Restroom (Exclusive To Suite)
- Remainder Open Office

can be combined to 1,931 SF





## Amenities/Parking Map



The distributor of this communication is performing acts for which a real estate license is required. The information contained herein has been obtained from sources deemed reliable but has not been verified and no guarantee, warranty or representation, either express or implied, is made with respect to such information. Terms of sale or lease and availability are subject to change or withdrawal without notice. MP-429 • 03/24



## Exterior Photos



The distributor of this communication is performing acts for which a real estate license is required. The information contained herein has been obtained from sources deemed reliable but has not been verified and no guarantee, warranty or representation, either express or implied, is made with respect to such information. Terms of sale or lease and availability are subject to change or withdrawal without notice. MP-429 • 03/24



## Exterior Photos



The distributor of this communication is performing acts for which a real estate license is required. The information contained herein has been obtained from sources deemed reliable but has not been verified and no guarantee, warranty or representation, either express or implied, is made with respect to such information. Terms of sale or lease and availability are subject to change or withdrawal without notice. MP-429 • 03/24





---

*For more information:*

**Newmark**

3055 Olin Ave  
Suite 2200  
San Jose, CA 95128  
t 408-727-9600

**Luke Allard**

*Director*

t 408-476-6517  
luke.allard@nmrk.com  
CA RE Lic #01910058

Disclaimer: The distributor of this communication is performing acts for which a real estate license is required. The information contained herein has been obtained from sources deemed reliable but has not been verified and no guarantee, warranty or representation, either express or implied, is made with respect to such information. Terms of sale or lease and availability are subject to change or withdrawal without notice. MP-429 • 03/24

**nmrk.com**

**NEWMARK**