

**INDUSTRIAL / FLEX
FOR LEASE**

SIGNAL HILL COMMERCE CENTER

2698 JUNIPERO AVENUE | SIGNAL HILL, CA 90755



MAX P. EDDY
Associate | DRE LIC 02163858
e meddy@leelalb.com
p 562.354.2538

GARRETT MASSARO, SIOB
Principal | DRE LIC 01771471
e gmassaro@leelalb.com
p 562.354.2516

BRANDON CARRILLO
Principal | DRE LIC 01745362
e bcarrillo@leelalb.com
p 562.354.2510



Copyright © Lee & Associates. All rights reserved. No part of this work may be reproduced or distributed without written permission of the copyright owner. The information contained in this report was gathered by Lee & Associates from sources believed to be reliable. Lee & Associates, however, makes no representation concerning the accuracy or completeness of such information and expressly disclaims any responsibility for any inaccuracy contained herein.

SIGNAL HILL COMMERCE CENTER

2698 JUNIPERO AVENUE | SIGNAL HILL, CA 90755

PROPERTY HIGHLIGHTS



- Signal Hill Commerce Center is strategically located in the Southeast section of the South Bay Industrial submarket. The City's major boulevards intersect the 405 Freeway to the north and the 710 freeway to the west, within minutes to the Ports of Long Beach & Los Angeles.
- Professionally Managed Flex/Industrial Business Park
- Adjacent to Douglas Park Master Planned Development & Long Beach Airport
- Local Amenities - Long Beach Airport, Costco, Home Depot, Restaurants, Entertainment
- Most Units have 100% HVAC
- 2 per 1,000 SF parking spaces
- Each unit is individually metered for electricity
- Lease Type: NNN. Lease Rates are quoted as the total "all in" PSF rate but we will transact a Triple Net deal on the Net equivalent reflecting the projects \$0.64 PSF Monthly Operating Expenses.
- Water, Trash, & Landscaping is included in the Operating Expenses.
- Zoning CI ([Click Here for Allowable Uses](#))

MAX P. EDDY
Associate | DRE LIC 02163858
e meddy@leelalb.com
p 562.354.2538

GARRETT MASSARO, SIOR
Principal | DRE LIC 01771471
e gmassaro@leelalb.com
p 562.354.2516

BRANDON CARRILLO
Principal | DRE LIC 01745362
e bcarrillo@leelalb.com
p 562.354.2510

Copyright © Lee & Associates. All rights reserved. No part of this work may be reproduced or distributed without written permission of the copyright owner. The information contained in this report was gathered by Lee & Associates from sources believed to be reliable. Lee & Associates, however, makes no representation concerning the accuracy or completeness of such information and expressly disclaims any responsibility for any inaccuracy contained herein.





Suite	Size	Rate	Description	Virtual Tour
103	±1,392 SF	\$2,714.40 Total Per Month (\$1.31/SF + OPEX)	<ul style="list-style-type: none">• Industrial/Flex Unit• 1 Reception Office & Open Warehouse Area• 10' x 12' GL Door• 14.5' Clear Height	
116	±1,392 SF	\$2,714.40 Total Per Month (\$1.31/SF + OPEX)	<ul style="list-style-type: none">• Industrial/Flex Unit• 1 Reception Office & Open Warehouse Area• 10' x 12' GL Door• 14.5' Clear Height	

MAX P. EDDY
Associate | DRE LIC 02163858
e meddy@leelalb.com
p 562.354.2538

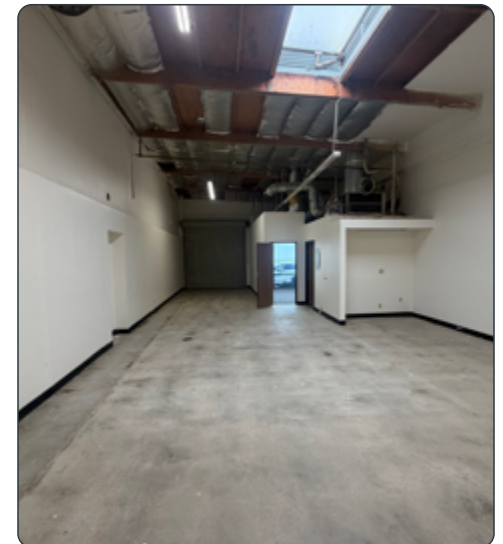
GARRETT MASSARO, SIOR
Principal | DRE LIC 01771471
e gmassaro@leelalb.com
p 562.354.2516

BRANDON CARRILLO
Principal | DRE LIC 01745362
e bcarrillo@leelalb.com
p 562.354.2510

Copyright © Lee & Associates. All rights reserved. No part of this work may be reproduced or distributed without written permission of the copyright owner. The information contained in this report was gathered by Lee & Associates from sources believed to be reliable. Lee & Associates, however, makes no representation concerning the accuracy or completeness of such information and expressly disclaims any responsibility for any inaccuracy contained herein.



UNIT INDICATOR



MAX P. EDDY
Associate | DRE LIC 02163858
e meddy@leelalb.com
p 562.354.2538

GARRETT MASSARO, SIOR
Principal | DRE LIC 01771471
e gmassaro@leelalb.com
p 562.354.2516

BRANDON CARRILLO
Principal | DRE LIC 01745362
e bcarrillo@leelalb.com
p 562.354.2510

Copyright © Lee & Associates. All rights reserved. No part of this work may be reproduced or distributed without written permission of the copyright owner. The information contained in this report was gathered by Lee & Associates from sources believed to be reliable. Lee & Associates, however, makes no representation concerning the accuracy or completeness of such information and expressly disclaims any responsibility for any inaccuracy contained herein.



MAX P. EDDY
Associate | DRE LIC 02163858
e meddy@leelalb.com
p 562.354.2538

GARRETT MASSARO, SIOR
Principal | DRE LIC 01771471
e gmassaro@leelalb.com
p 562.354.2516

BRANDON CARRILLO
Principal | DRE LIC 01745362
e bcarrillo@leelalb.com
p 562.354.2510

Copyright © Lee & Associates. All rights reserved. No part of this work may be reproduced or distributed without written permission of the copyright owner. The information contained in this report was gathered by Lee & Associates from sources believed to be reliable. Lee & Associates, however, makes no representation concerning the accuracy or completeness of such information and expressly disclaims any responsibility for any inaccuracy contained herein.



SIGNAL HILL COMMERCE CENTER

2698 JUNIPERO AVENUE | SIGNAL HILL, CA 90755

PROPERTY AERIAL



MAX P. EDDY
Associate | DRE LIC 02163858
e meddy@leelalb.com
p 562.354.2538

GARRETT MASSARO, SIOR
Principal | DRE LIC 01771471
e gmassaro@leelalb.com
p 562.354.2516

BRANDON CARRILLO
Principal | DRE LIC 01745362
e bcarrillo@leelalb.com
p 562.354.2510

Copyright © Lee & Associates. All rights reserved. No part of this work may be reproduced or distributed without written permission of the copyright owner. The information contained in this report was gathered by Lee & Associates from sources believed to be reliable. Lee & Associates, however, makes no representation concerning the accuracy or completeness of such information and expressly disclaims any responsibility for any inaccuracy contained herein.

LEE & ASSOCIATES
COMMERCIAL REAL ESTATE SERVICES

GeorgeUrban
ADVISORS