

FOR SALE

FORMER ST. CAMILLUS CAMPUS



PRICE REDUCTION - \$2,490,000

5426 S LOCKWOOD AVE CHICAGO, IL 60638

PROPERTY HIGHLIGHTS:

- 2.94-acre site
- Existing buildings ±44,000 SF (21,500, 17,000, 5,600)
- Current zoning RS-3 - contact broker for rezoning possibilities
- Across from Midway Airport/Southwest Airlines
- Easy access to I-55 (Cicero/Central interchanges)
- Short trip to downtown, I-294, I-90/94 interchanges
- Deed restrictions apply - contact broker for details
- Great location for education use (school), multi-family/single family/mixed-use development
- Asking Price: \$2,490,000

The information provided herein along with any attachment(s) was obtained from sources believed to be reliable, however, Friedman Real Estate makes no guarantees, warranties, or representations as to the completeness or accuracy of such information and legal counsel is advised. All information provided is subject to verification and no liability for reliance on such information or errors or omissions is assumed. The presentation of this property is submitted subject to errors, omissions, change of price or conditions, prior sale or lease, or withdrawal without notice. Copyright © 2023 Friedman Real Estate. All rights reserved.

FOR MORE INFORMATION PLEASE CONTACT:



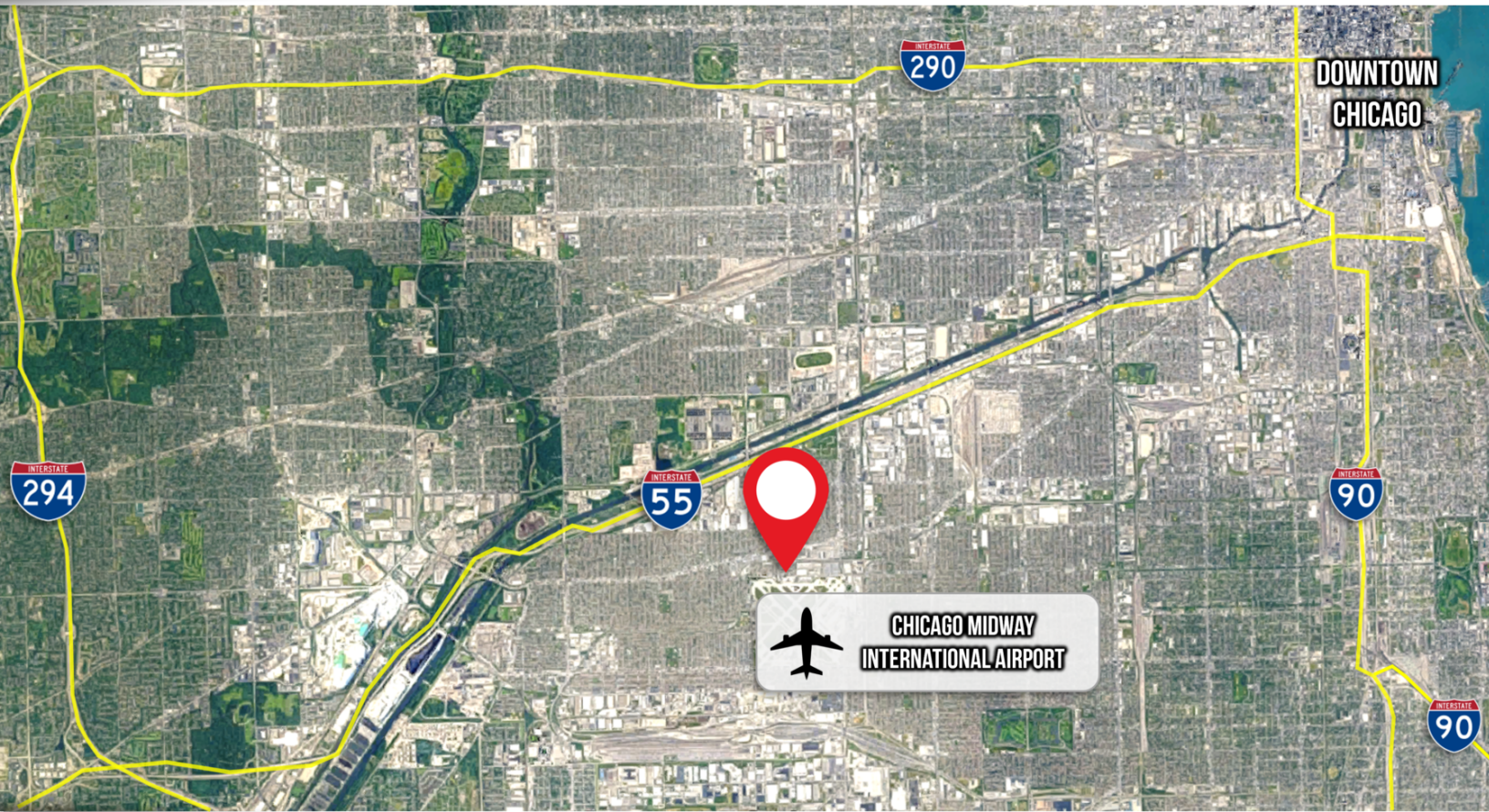
VICTOR LEWIS
torrey.lewis@freg.com

312.728.1700

eCODE 161



FORMER ST. CAMILLUS CAMPUS LOCATION **OVERVIEW**



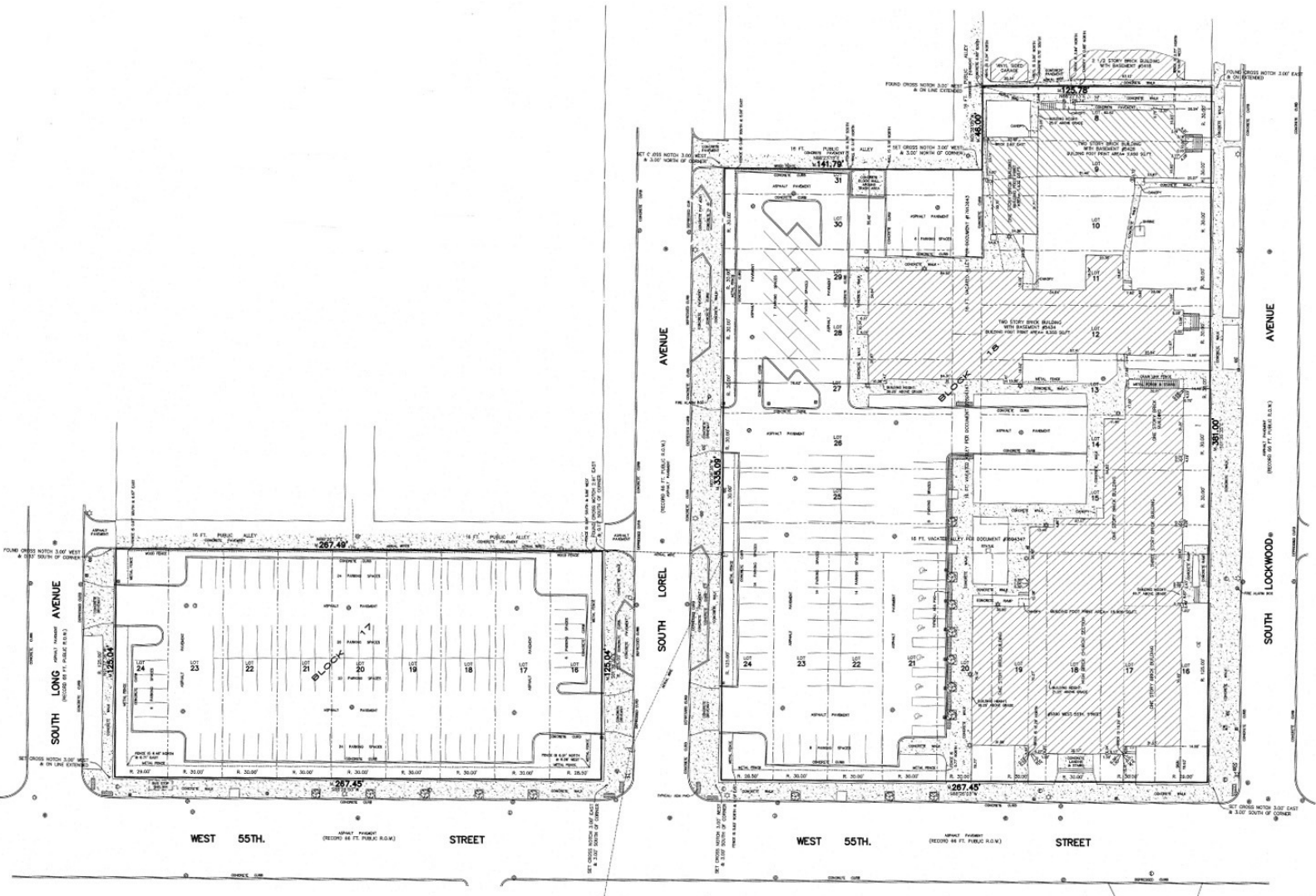
TRAFFIC COUNTS

INTERSECTION	CARS PER DAY
W 55th St & S Long Ave	30,154
S Central Ave & S Archer Ave	24,305
S Cicero Ave & W 54th St	58,751
Archer Ave S & Long Ave	21,466

DEMOGRAPHICS

	0.5 MILES	1 MILE	1.5 MILES
Total Population	5,095	16,853	48,765
Total Households	1,693	5,647	15,847
Average HH Income	\$60,741	\$66,971	\$64,565

FORMER ST. CAMILLUS CAMPUS SITE PLAN



FORMER ST. CAMILLUS CAMPUS PROPERTY **PHOTOS**

