



FOR LEASE

Clear Span Warehouse

1270 Interior Street
Eugene OR 97402

7,452 SF of open clear span warehouse space
\$5,975 PER MONTH no additional NNN expense

- Located on large fenced and gated lot
- Property is zoned E-2 (Mixed-use Employment)
- Convenient West Eugene location

**Evans
Elder
Brown &
Seubert**

COMMERCIAL REAL ESTATE

CONTACT

Stephanie Seubert
stephanie@eebcre.com

John Brown
john@eebcre.com

541.345.4860

Licensed in the State of Oregon.

Description

1270 Interior Street
Eugene OR 97402

Evans
Elder
Brown &
Seubert

COMMERCIAL REAL ESTATE

CONTACT

**Stephanie
Seubert**

stephanie@eebcre.com

**John
Brown**

john@eebcre.com

541.345.4860

101 East Broadway
Suite #101
Eugene, OR 97401

Licensed in the
State of Oregon.



- Building has two small offices, open clear span warehouse space with 16' clear height ceilings, two 12' x 14' roll-up doors and one 20' x 12' roll up door.
- Property is located on a fenced and gated lot of approximately 0.90 acres providing for outdoor storage.



Floor Plan

1270 Interior Street
Eugene OR 97402

Evans
Elder
Brown &
Seubert

COMMERCIAL REAL ESTATE

CONTACT

**Stephanie
Seubert**

stephanie@eebcre.com

**John
Brown**

john@eebcre.com

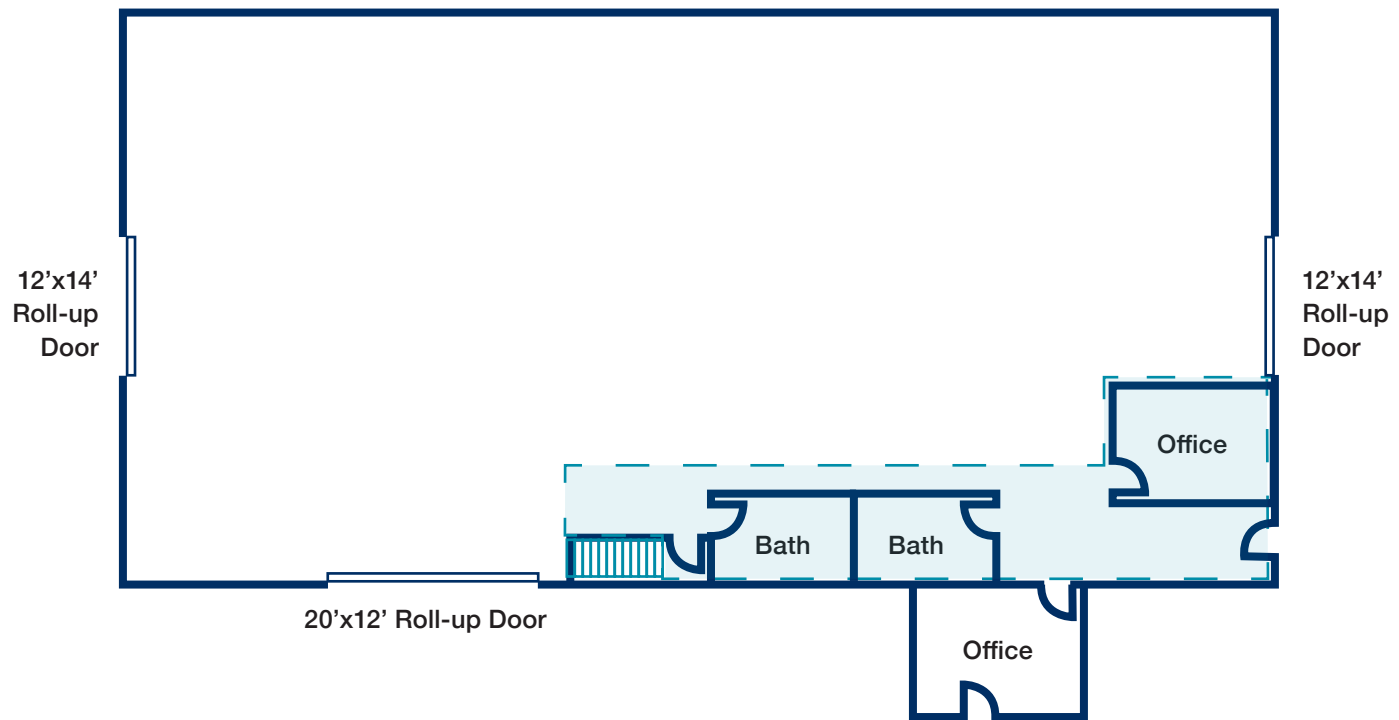
541.345.4860

101 East Broadway
Suite #101
Eugene, OR 97401

Licensed in the
State of Oregon.

Clear Span Warehouse with Office Space

APPROXIMATELY 7,452 SQUARE FEET



 MEZZANINE AREA

Location

1270 Interior Street
Eugene OR 97402

Evans
Elder
Brown &
Seubert

COMMERCIAL REAL ESTATE

CONTACT

**Stephanie
Seubert**

stephanie@eebcre.com

**John
Brown**

john@eebcre.com

541.345.4860

101 East Broadway
Suite #101
Eugene, OR 97401

Licensed in the
State of Oregon.

