



4,630 - 9,856 SF AVAILABLE

4225 Phil Niekro Parkway
Norcross, GA 30093

OWNED BY:



Faropoint

FOR LEASE



BUILDING INFORMATION

Total Size: 40,195 SF
Clear Height: 18' - 20'
Sprinklers: Wet System
Loading: Fourteen (14) Dock High Doors
Four (4) Drive-In Doors
Zoning: M1 - Light Industrial
Available: Immediately
Location: +/- 2 miles from I-85
+/- 8 miles from I-285
+/- 20 miles from I-20
+/- 32 miles from Atlanta Airport



For more information, please contact:

TREY WEGHORST

Office: (770) 264-9420
Cell: (404) 276-9314
tweghorst@apexindustrialre.com

RYAN BLACKBURN

Office: (404) 974-2716
Cell: (404) 821-7715
rblackburn@apexindustrialre.com

MORGAN MCMENAMY

Office: (404) 595-1524
Cell: (404) 771-1199
mmcmnamy@apexindustrialre.com



APEX INDUSTRIAL
REAL ESTATE ADVISORS, LLC

Although the information contained therein was provided from sources believed to be reliable, Apex Industrial makes no representation, expressed or implied, as to its accuracy and said information is subject to errors, omissions or changes.



9,856 SF AVAILABLE

4225 Phil Niekro Parkway
Suite 116
Norcross, GA 30093

OWNED BY:



Faropoint

FLOORPLAN



SUITE 116 INFORMATION

Total Size: 9,856 SF
Office: 1,971 SF
Warehouse: 7,885 SF
Clear Height: 18' - 20'
Sprinklers: Wet System
Loading: Two (2) Dock High Doors
Two (2) Drive-In Doors
Available: Immediately

For more information, please contact:

TREY WEGHORST

Office: (770) 264-9420
Cell: (404) 276-9314
tweghorst@apexindustrialre.com

RYAN BLACKBURN

Office: (404) 974-2716
Cell: (404) 821-7715
rblackburn@apexindustrialre.com

MORGAN MCMENAMY

Office: (404) 595-1524
Cell: (404) 771-1199
mmcmenamy@apexindustrialre.com



APEX INDUSTRIAL
REAL ESTATE ADVISORS, LLC

Although the information contained therein was provided from sources believed to be reliable, Apex Industrial makes no representation, expressed or implied, as to its accuracy and said information is subject to errors, omissions or changes.



4,630 SF AVAILABLE

4225 Phil Niekro Parkway
Suite 108-109
Norcross, GA 30093

OWNED BY:

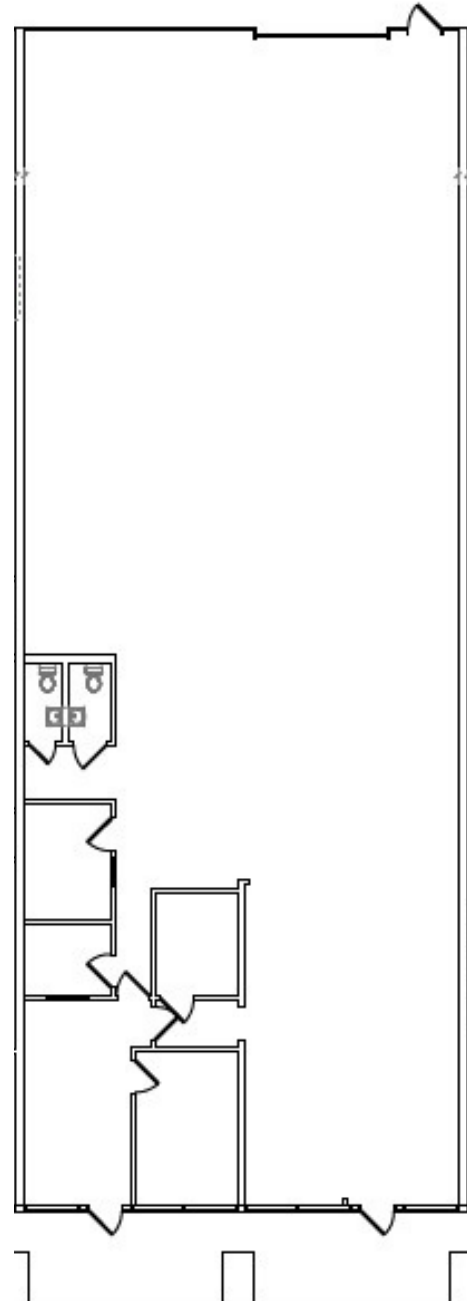


Faropoint

SUITE 108 - 109 INFORMATION

Total Size: 4,630 SF
Office: 1,117 SF
Warehouse: 3,513 SF
Clear Height: 18' - 20'
Sprinklers: Wet System
Loading: One (1) Drive-In Door
Available: Immediately

FLOORPLAN



For more information, please contact:

TREY WEGHORST

Office: (770) 264-9420
Cell: (404) 276-9314
tweghorst@apexindustrialre.com

RYAN BLACKBURN

Office: (404) 974-2716
Cell: (404) 821-7715
rblackburn@apexindustrialre.com

MORGAN MCMENAMY

Office: (404) 595-1524
Cell: (404) 771-1199
mmcmnamy@apexindustrialre.com



APEX INDUSTRIAL
REAL ESTATE ADVISORS, LLC

Although the information contained therein was provided from sources believed to be reliable, Apex Industrial makes no representation, expressed or implied, as to its accuracy and said information is subject to errors, omissions or changes.