

# ±1 AC, PROPOSED 2-TENANT BUILDING W/DRIVE-THRU

For Lease

1 Skippack Pike, Blue Bell, Montgomery County, PA 19422

EQUITY RETAIL BROKERS



## PROPERTY FEATURES & DETAILS

- Located at a 4-way signalized intersection, hard corner.
- Proposed 2-tenant building with endcap drive-thru
- Co-located with mixed use office-retail building

## CONTACT

ROB SAMTMANN

rsamtman@equityretailbrokers.com

DIRECT 484.417.2208

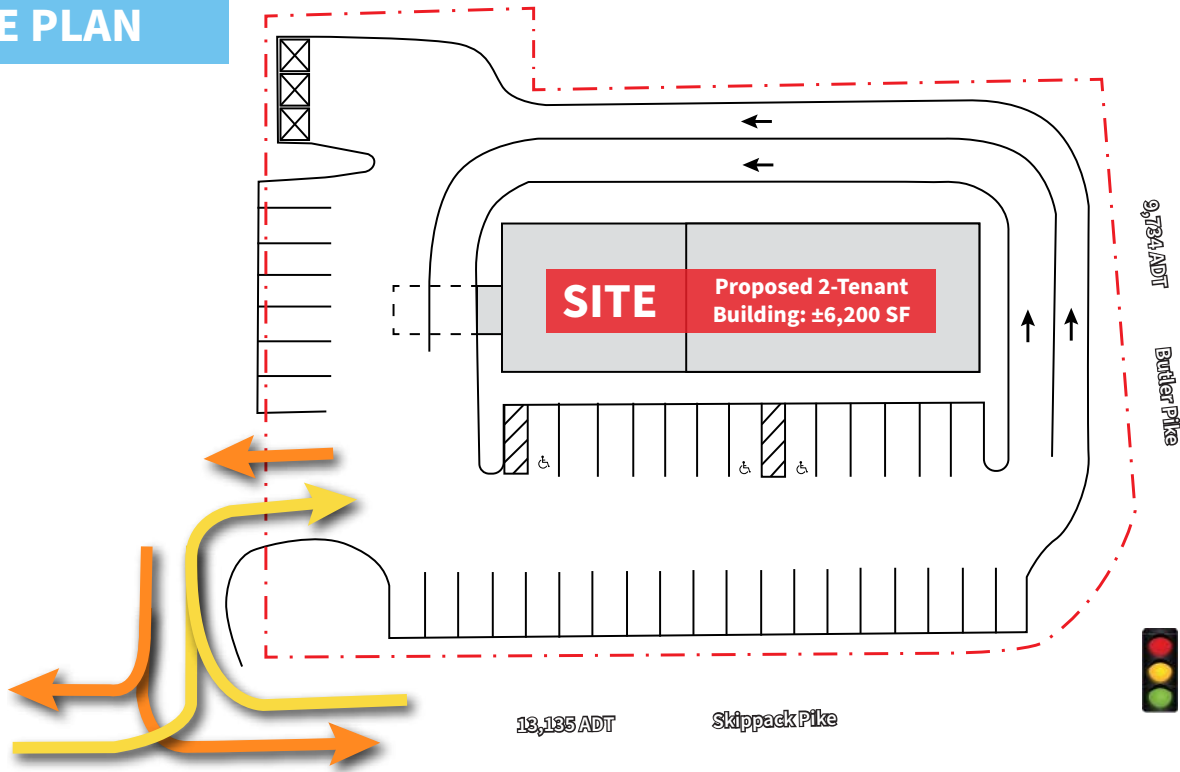
**±1 AC, PROPOSED 2-TENANT BUILDING W/DRIVE-THRU**

**For Lease**

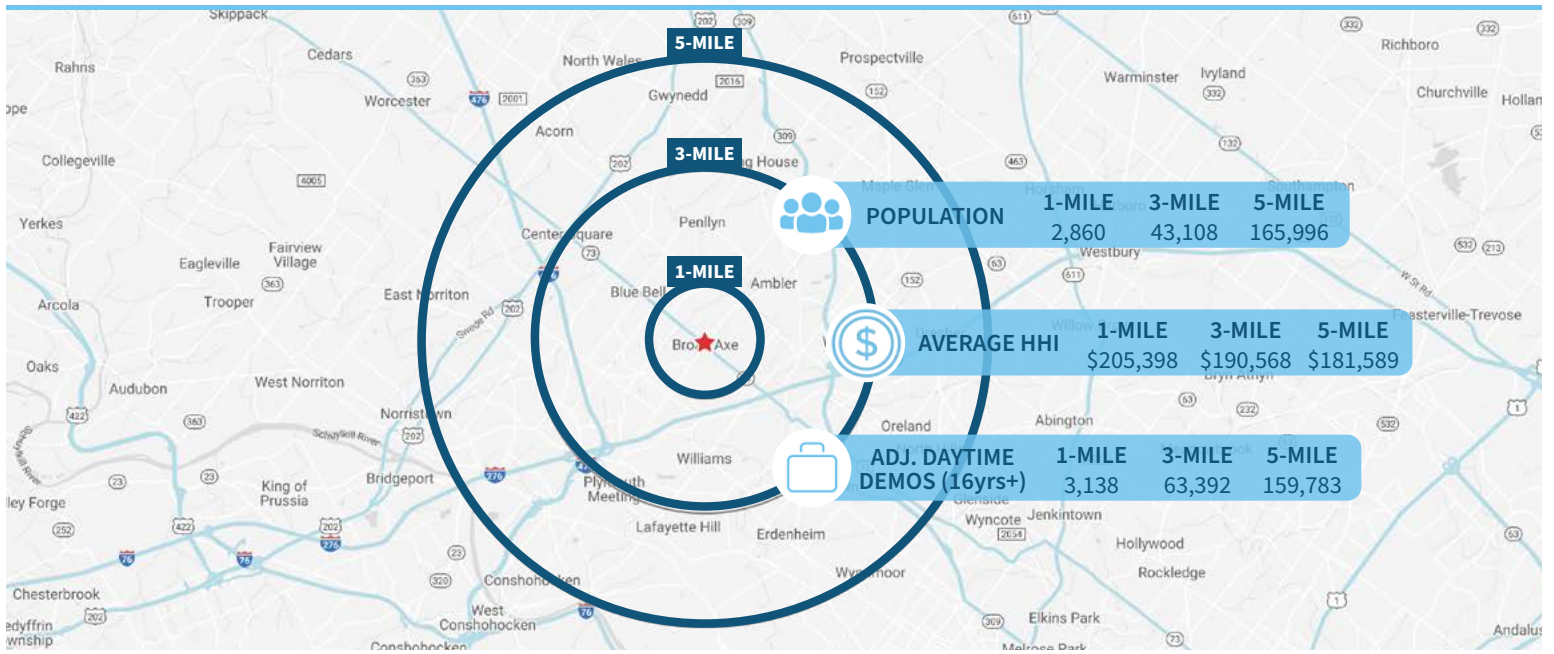
**1 Skippack Pike, Blue Bell, Montgomery County, PA 19422**

EQUITY RETAIL BROKERS

**SITE PLAN**



**Demographic Overview (1, 3, 5-mile radius)**



**The right space. The right move.**



Information concerning this offering is from sources deemed reliable but no warranty is made to the accuracy thereof and it is submitted subject to errors, omissions, changes of price or other conditions, prior to sale or lease or withdrawal without notice. Equity Retail Brokers is licensed in PA, NJ, & DE. Rob Samtmann is a licensed salespersons in PA & NJ.

# MARKET AERIAL

1 Skippack Pike, Blue Bell | Montgomery County, PA



**SITE**  
Proposed 2-Tenant  
Building: ±6,200 SF

**Metroplex Mall**  
target LOWE'S GIANT BARNES & NOBLE

**Plymouth Meeting Mall**  
WHOLE FOODS Boscov's Burlington Michaels AMC THEATRES

### Compliments of:

Equity Retail Brokers ■ 531 W. Germantown Pike, Ste 103 ■ Plymouth Meeting, PA 19462 ■ 610.645.7700 ■ [www.equityretailbrokers.com](http://www.equityretailbrokers.com)

