



ROYAL GREEN PLAZA

8499 GREENVILLE AVE, DALLAS, TX 75231

AVAILABLE FOR LEASE



MELISSA MOORE | LEASING AGENT
972.658.7363 | mmoore@dunhillpartners.com
dunhillpartners.com

HIGHLIGHTS & SITE PLAN

MELISSA MOORE | LEASING AGENT
 972.658.7363 | mmoore@dunhillpartners.com
 dunhillpartners.com



LOCATION

8499 Greenville Ave, Dallas, TX 75231

AVAILABLE SPACES

| | |
|--------------|---------------------------|
| Suite 99-101 | 2,397 SF (Available Soon) |
| Suite 104 | 1,023 SF |
| Suite 200 | 2,246 SF |

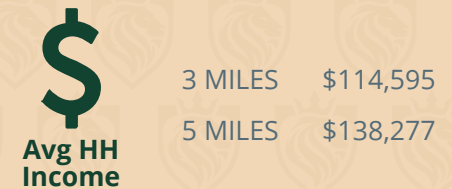
RATES

Call for Details

TRAFFIC GENERATORS

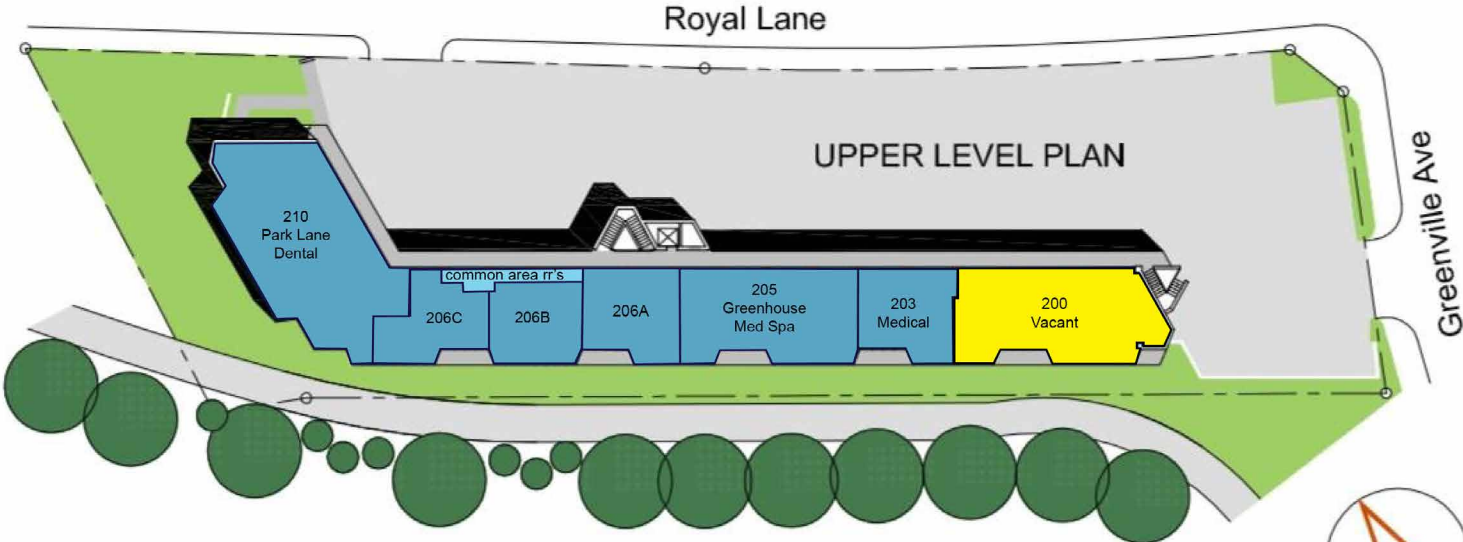


2024 DEMOGRAPHICS

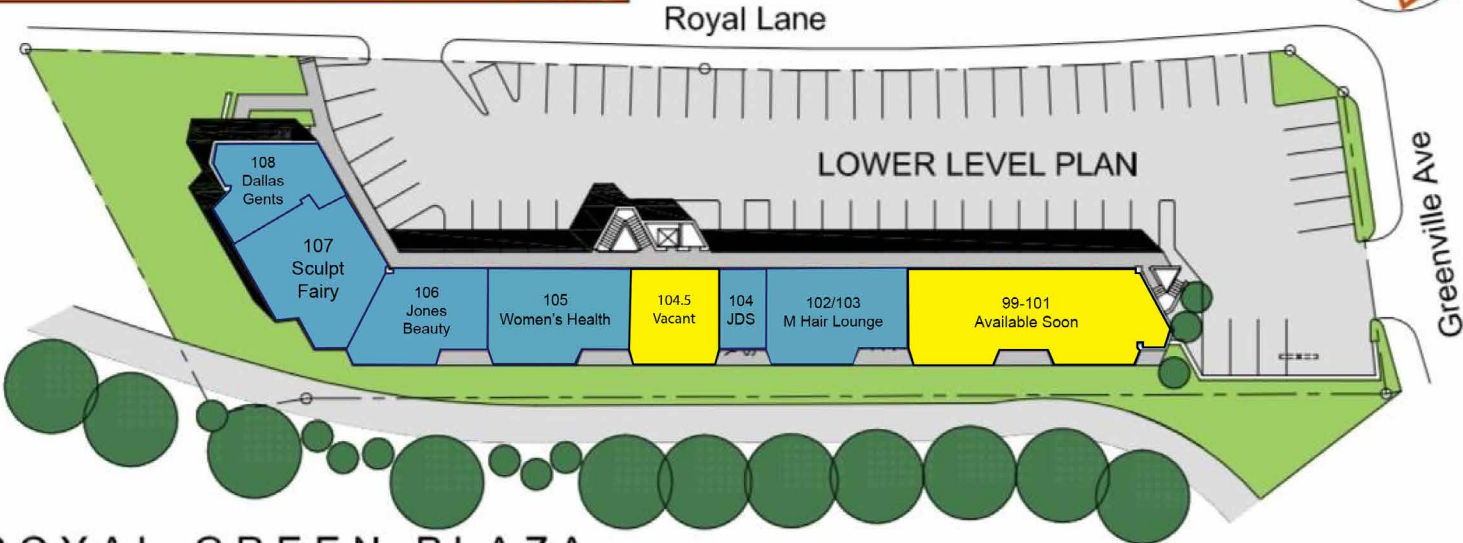


SITE PLAN

MELISSA MOORE | LEASING AGENT
972.658.7363 | mmoore@dunhillpartners.com
dunhillpartners.com



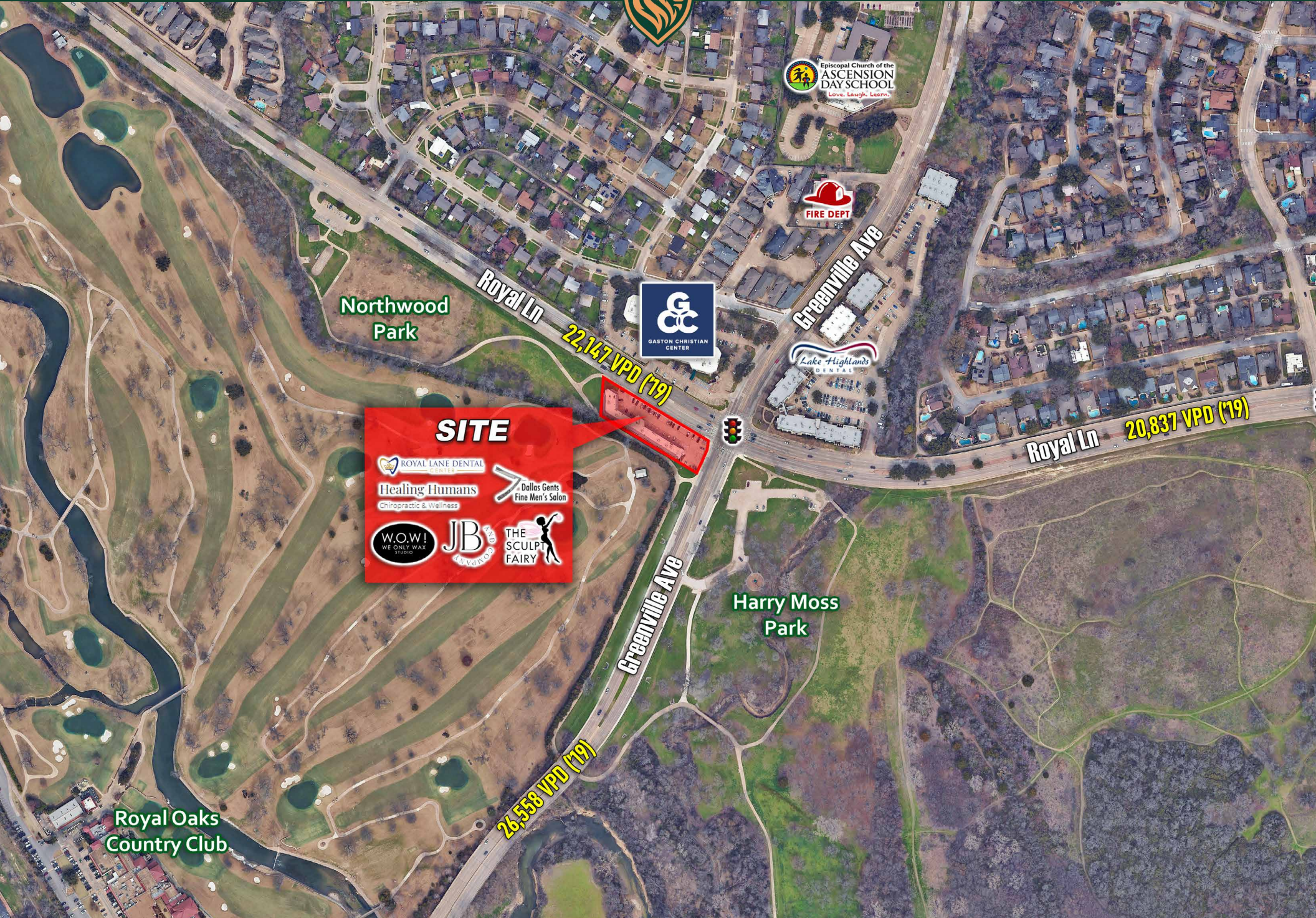
SITE PLAN



ROYAL GREEN PLAZA
8499 Greenville Avenue
Dallas, TX 75231

SITE AERIAL

MELISSA MOORE | LEASING AGENT
972.658.7363 | mmoore@dunhillpartners.com
dunhillpartners.com



Northwood Park

Royal Ln

22,147 VPD (19)



Greenville Ave



Royal Ln

20,837 VPD (19)

SITE

- ROYAL LANE DENTAL
- Healing Humans Chiropractic & Wellness
- WOW! WE ONLY WAX STUDIO
- JB
- Dallas Gents Fine Men's Salon
- THE SCULPT FAIRY

Harry Moss Park

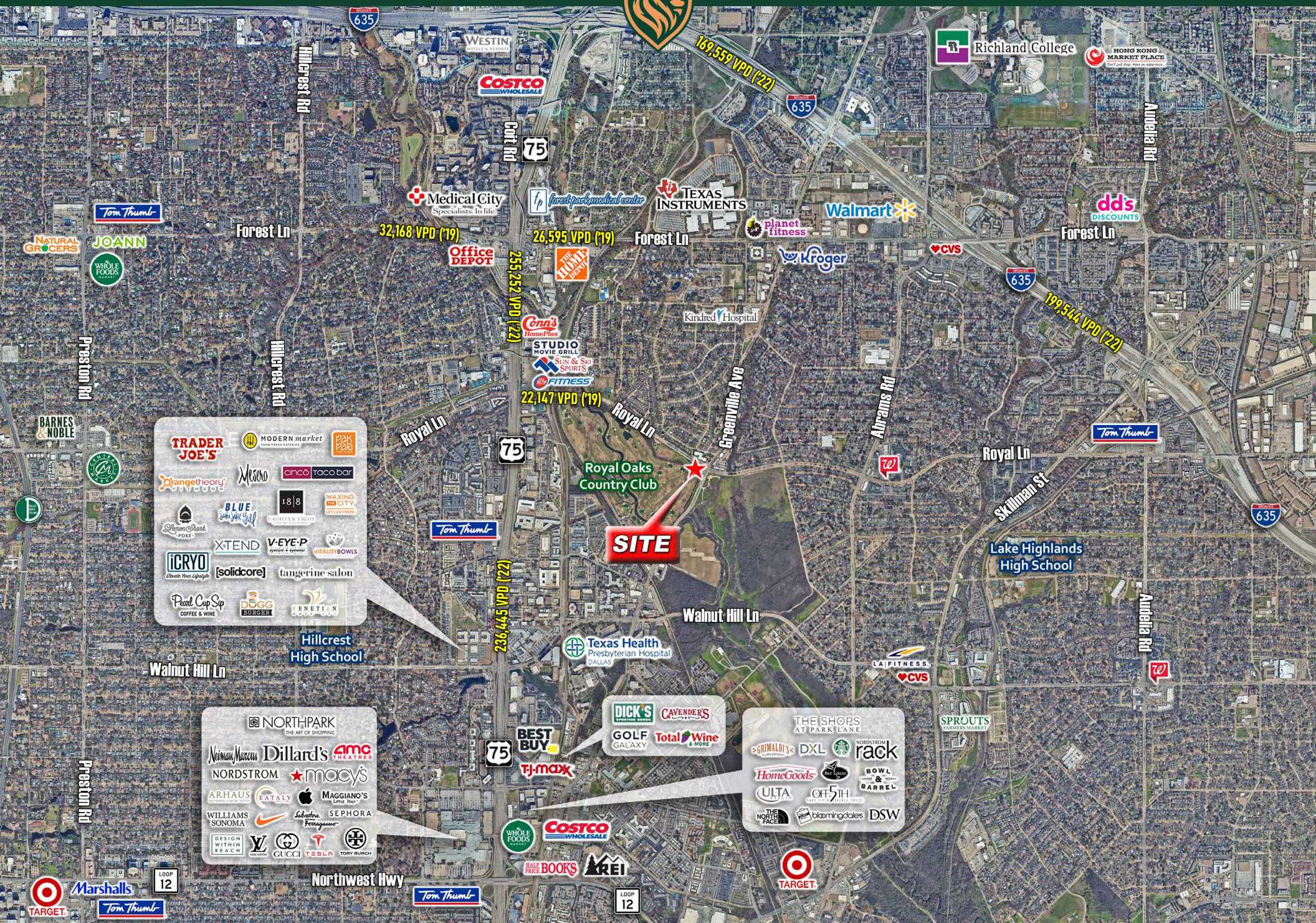
Greenville Ave

26,558 VPD (19)

Royal Oaks Country Club

WIDE AERIAL

MELISSA MOORE | LEASING AGENT
 972.658.7363 | mmoore@dunhillpartners.com
 dunhillpartners.com



TRADER JOE'S | MODERN market | PAK PAK

OrangeTheory | Mesero | cancelo | taco bar

BLUE | 18 | 8 | WAXING

XTEND | V-EYE-P | VITALITY BOWLS

[solidcore] | tangerine salon

Pearl Cup Sip | DOGG | VENETIAN

NORTH PARK | THE ART OF SHOPPING

Neiman Marcus | Dillard's | AMC THEATRES

NORDSTROM | macy's

ARHAUS | EATALY | Apple | MAGGIANO'S

WILLIAMS SONOMA | Nike | Salvatore Ferragamo | SEPHORA

DESIGN WITHIN REACH | LV | GUCCI | TESLA | TORY BURCH

DICK'S | CAVENDER'S

BEST BUY | **TJ-maxx**

GOLF GALAXY | Total Wine & More

THE SHOPS AT PARK LANE

CRINALDI'S | DXL | Starbucks | rack

HomeGoods | BOWL BARREL

ULTA | OFF 5TH | THE NORTH FACE | bloomingdale's | DSW

TARGET | **Marshalls** | **Tom Thumb**

Tom Thumb | **WHOLE FOODS MARKET** | **COSTCO WHOLESALE** | **HALLE BOOKS** | **REI** | **LOOP 12**

TARGET