



4450 Belden Village St  
Canton, Ohio 44718

### Property Features

- 2,040-3,258/SF Gross Lease
- Includes office cleaning 2x a week.
- On Site Security
- On Site Maintenance Assistance
- Reserved Parking
- Common Area Conference Room with seating for up to 30 people. Available for office tenant use.
- Walking distance to restaurants and shopping.
- Private offices available.



**Sean Sanford**

330 284 0331 • [sean@naispring.com](mailto:sean@naispring.com)

**Jared Sanford**

330 354 3466 • [jared@naispring.com](mailto:jared@naispring.com)

# The Glass Tower

## Office Space for Lease

## PHOTOS



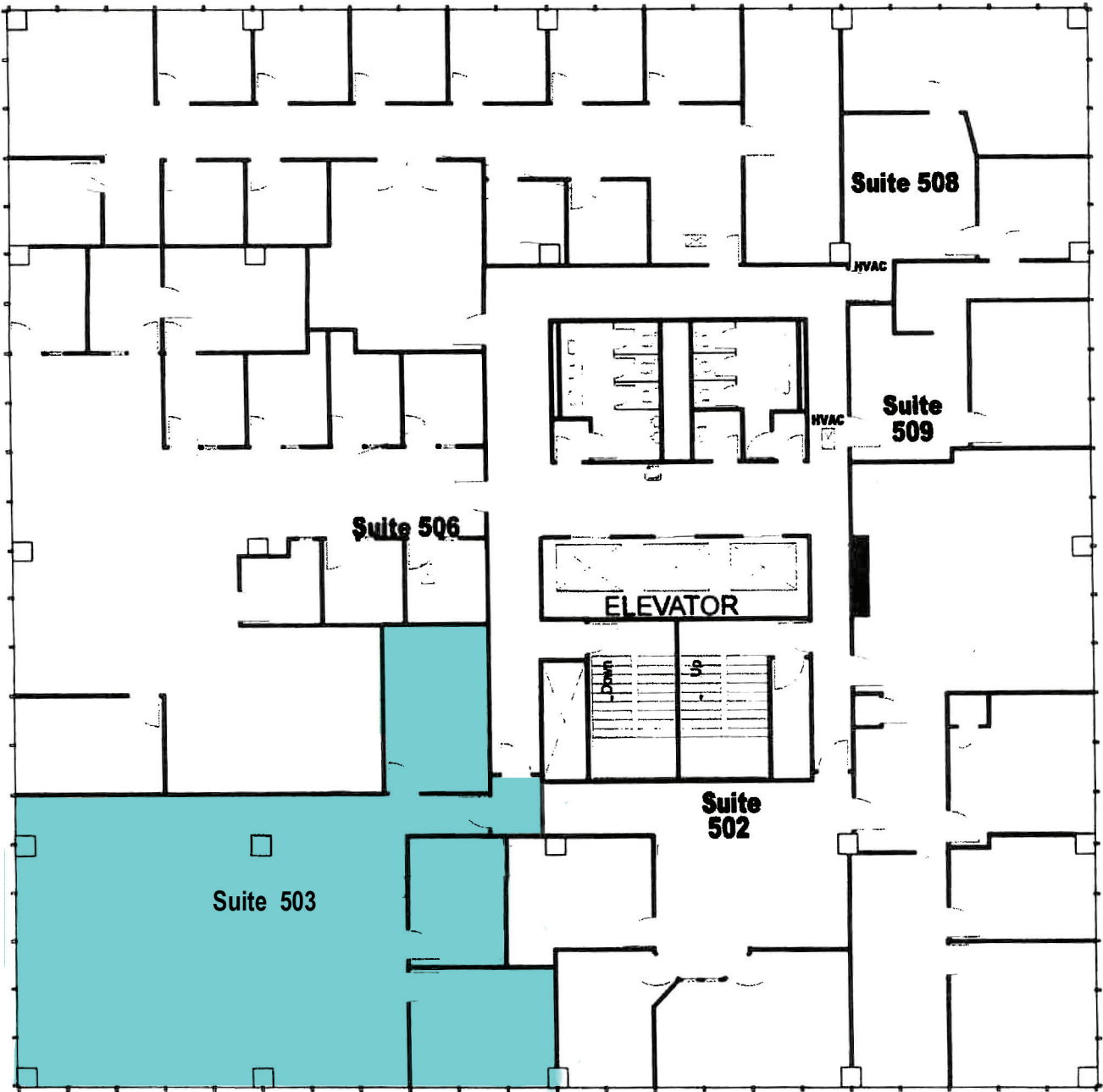
NO WARRANTY OR REPRESENTATION, EXPRESS OR IMPLIED, IS MADE AS TO THE ACCURACY OF THE INFORMATION CONTAINED HEREIN, AND THE SAME IS SUBMITTED SUBJECT TO ERRORS, OMISSIONS, CHANGE OF PRICE, RENTAL OR OTHER CONDITIONS, PRIOR SALE, LEASE OR FINANCING, OR WITHDRAWAL WITHOUT NOTICE, AND OF ANY SPECIAL LISTING CONDITIONS IMPOSED BY OUR PRINCIPALS NO WARRANTIES OR REPRESENTATIONS ARE MADE AS TO THE CONDITION OF THE PROPERTY OR ANY HAZARDS CONTAINED THEREIN ARE ANY TO BE IMPLIED.

8234 Pittsburg Ave NW  
North Canton, Ohio 44720  
330-966-8800  
[naispring.com](http://naispring.com)



The Glass Tower  
Office Space for Lease  
5th Floor

Suite	Sq. Ft.	Sq. Ft. Rate	Monthly
503	2,040	\$18.00	\$3,060.00



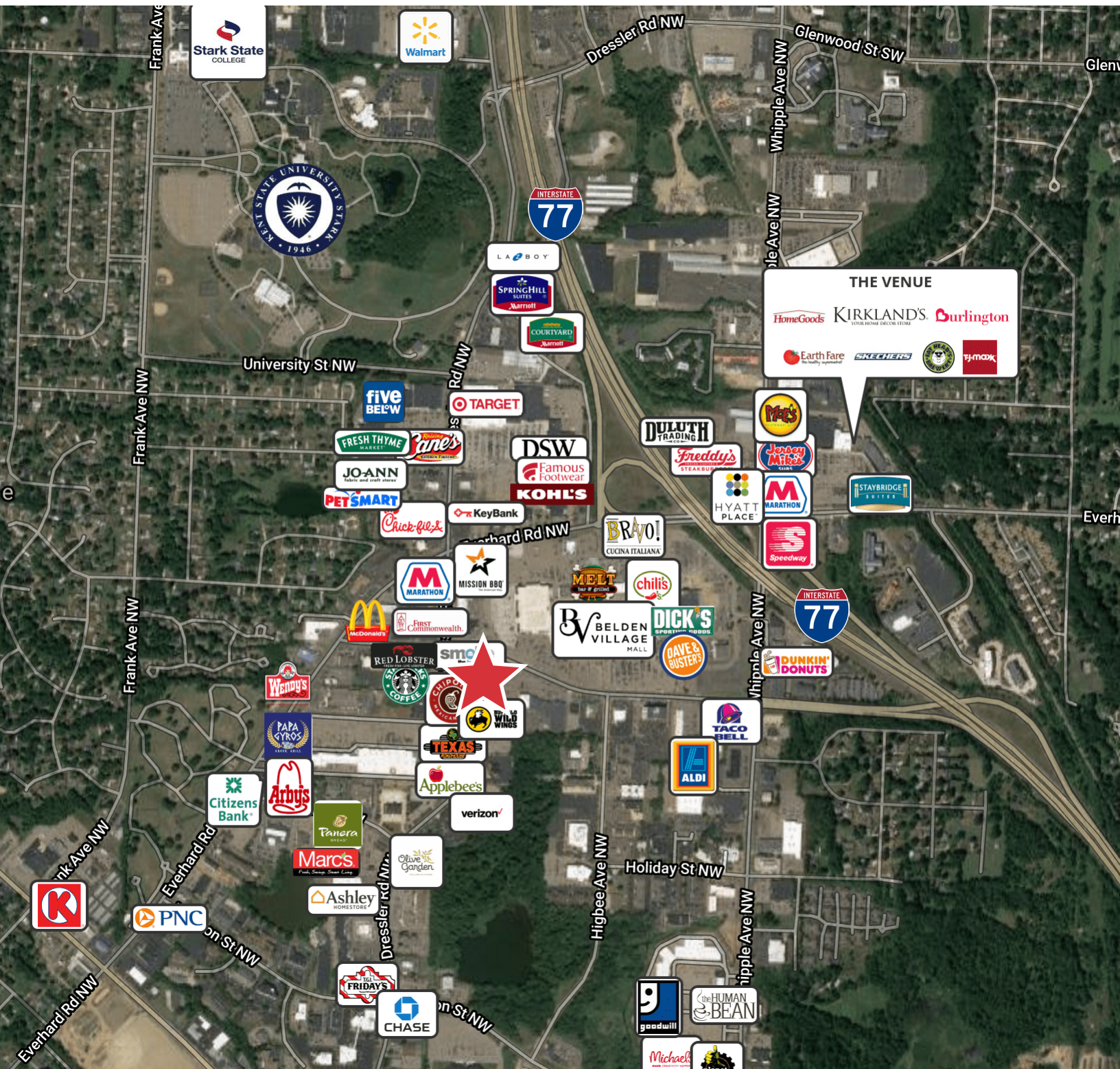
NO WARRANTY OR REPRESENTATION, EXPRESS OR IMPLIED, IS MADE AS TO THE ACCURACY OF THE INFORMATION CONTAINED HEREIN, AND THE SAME IS SUBMITTED SUBJECT TO ERRORS, OMISSIONS, CHANGE OF PRICE, RENTAL OR OTHER CONDITIONS, PRIOR SALE, LEASE OR FINANCING, OR WITHDRAWAL WITHOUT NOTICE, AND OF ANY SPECIAL LISTING CONDITIONS IMPOSED BY OUR PRINCIPALS NO WARRANTIES OR REPRESENTATIONS ARE MADE AS TO THE CONDITION OF THE PROPERTY OR ANY HAZARDS CONTAINED THEREIN ARE ANY TO BE IMPLIED.

8234 Pittsburg Ave NW  
North Canton, Ohio 44720  
330-966-8800  
[naispring.com](http://naispring.com)



# The Glass Tower Office Space for Lease

## RETAILER MAP



NO WARRANTY OR REPRESENTATION, EXPRESS OR IMPLIED, IS MADE AS TO THE ACCURACY OF THE INFORMATION CONTAINED HEREIN, AND THE SAME IS SUBMITTED SUBJECT TO ERRORS, OMISSIONS, CHANGE OF PRICE, RENTAL OR OTHER CONDITIONS, PRIOR SALE, LEASE OR FINANCING, OR WITHDRAWAL WITHOUT NOTICE, AND OF ANY SPECIAL LISTING CONDITIONS IMPOSED BY OUR PRINCIPALS NO WARRANTIES OR REPRESENTATIONS ARE MADE AS TO THE CONDITION OF THE PROPERTY OR ANY HAZARDS CONTAINED THEREIN ARE ANY TO BE IMPLIED.

8234 Pittsburg Ave NW  
North Canton, Ohio 44720  
330-966-8800  
[naispring.com](http://naispring.com)