

**CBRE**

# 10 KING EAST

OFFICE SPACE FOR LEASE | BUILT OUT SUITES

**Mackenzie Sharpe\***

Senior Vice President

+1 416 815 2382

mackenzie.sharpe@cbre.com

**Andrea Sujer\*\***

Transaction Manager

+1 416 886 8191

andrea.sujer@cbre.com

**Peter Khouri**

Sales Representative

+1 647 943 4178

peter.khouri@cbre.com

\*Broker

\*\*Sales Representative



# Building Features

## AVAILABILITY

Suite 200	4,371 SF	—	Full Floor
Suite 500	1,491 SF	—	Contiguous 2,886 SF
Suite 502	1,395 SF		
Suite 800	1,421 SF	—	<b>LEASED</b>
Suite 900	4,354 SF	—	Full Floor
<b>Suite 1100</b>	<b>4,354 SF</b>	—	<b>Model Suite/ Full Floor</b>
Suite 1401	1,660 SF		
Suite 1500	4,354 SF	—	Full Floor

## NET RENT

Contact Listing Agents

## ADDITIONAL RENT

\$28.56 PSF/Annum (2024 Est. )



## FACTS



Just steps away from Toronto's financial core.



Convenient access to great downtown bars, restaurant and shopping.



Fast access to subway and streetcars.



Easy access to PATH.

Suite 1100

# MOVE-IN READY

## MODEL SUITE

**SIZE**

4,354 SF

**ADDITIONAL RENT**

\$28.56 PSF/Annum (2024 Est.)

**AVAILABILITY**

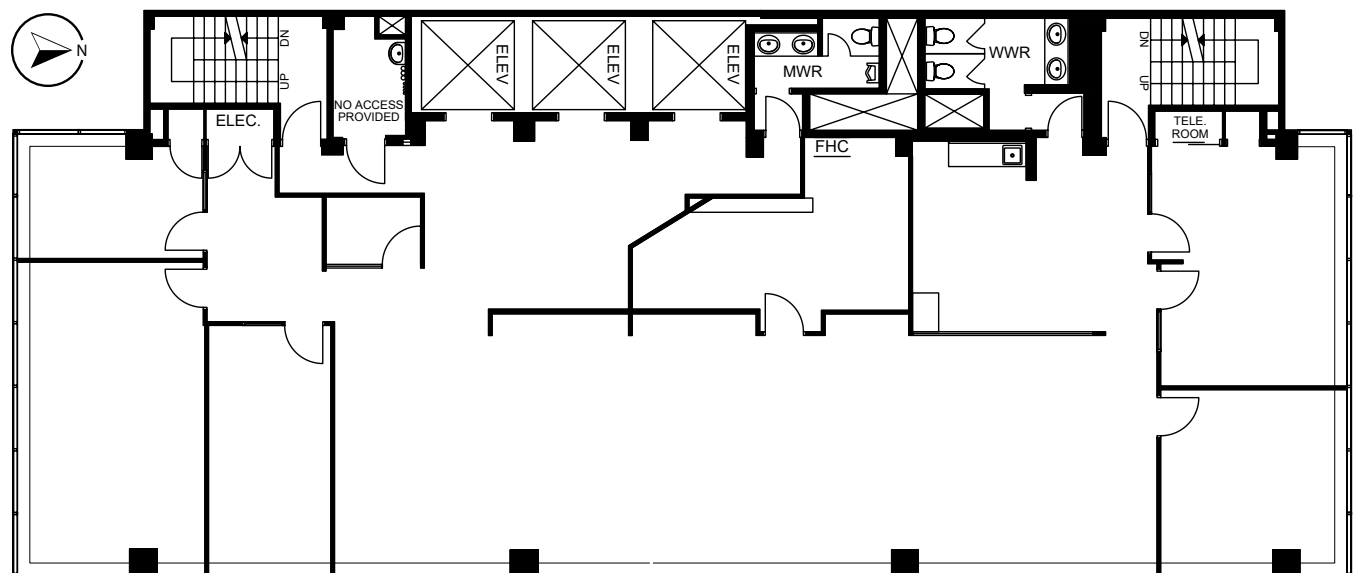
Flexible

**COMMENT**

- Full floor.
- Built out with 2 boardrooms, 3 offices, open workstation area, dedicated reception and kitchen/servery area.
- Furniture can be made available.

**NET RENT**

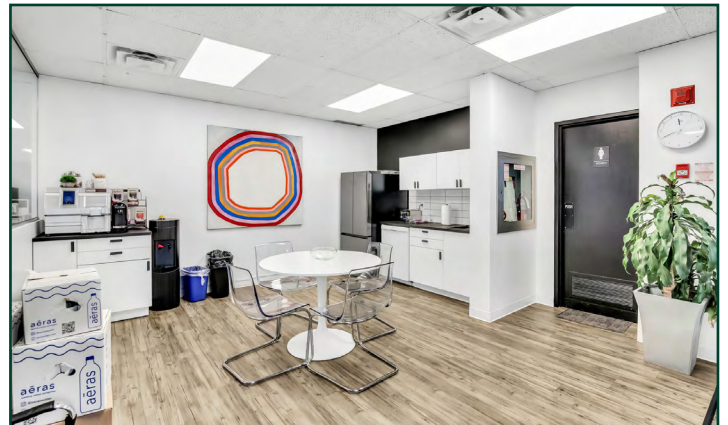
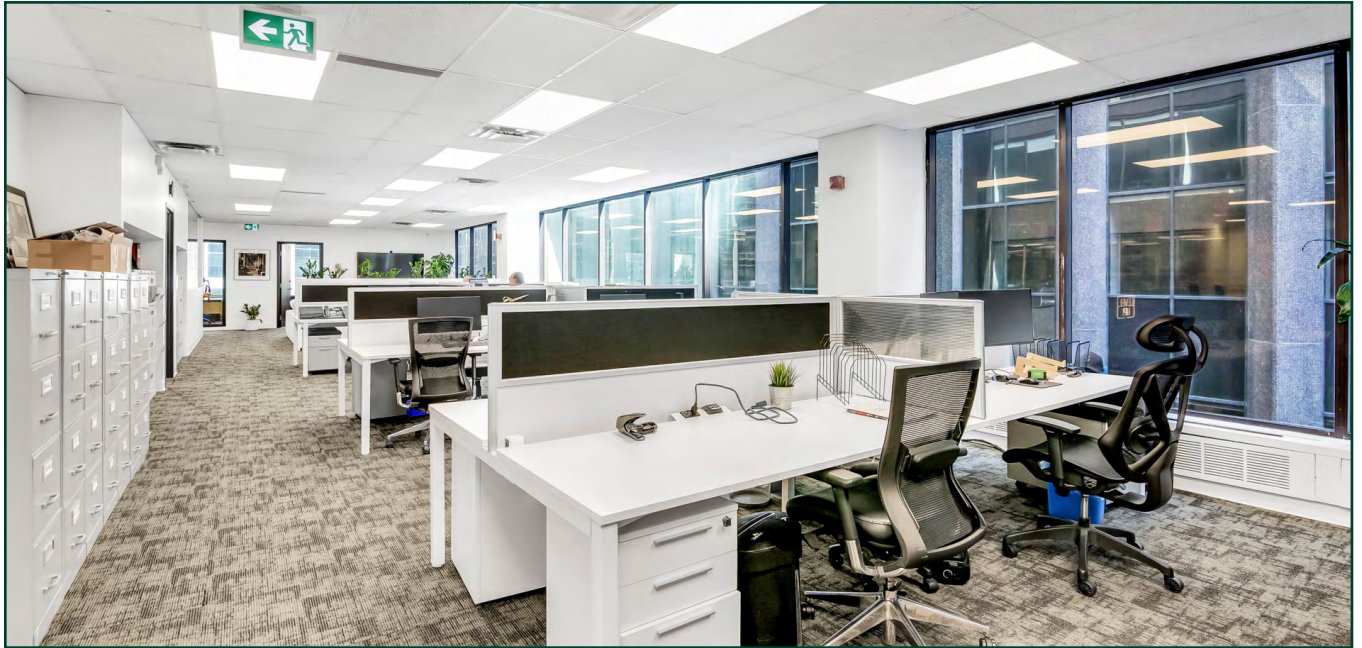
Contact Listing Agents





Suite 1100

# MOVE-IN READY MODEL SUITE





# Suite 200

## SIZE

4,371 SF

## AVAILABILITY

Immediately

## NET RENT

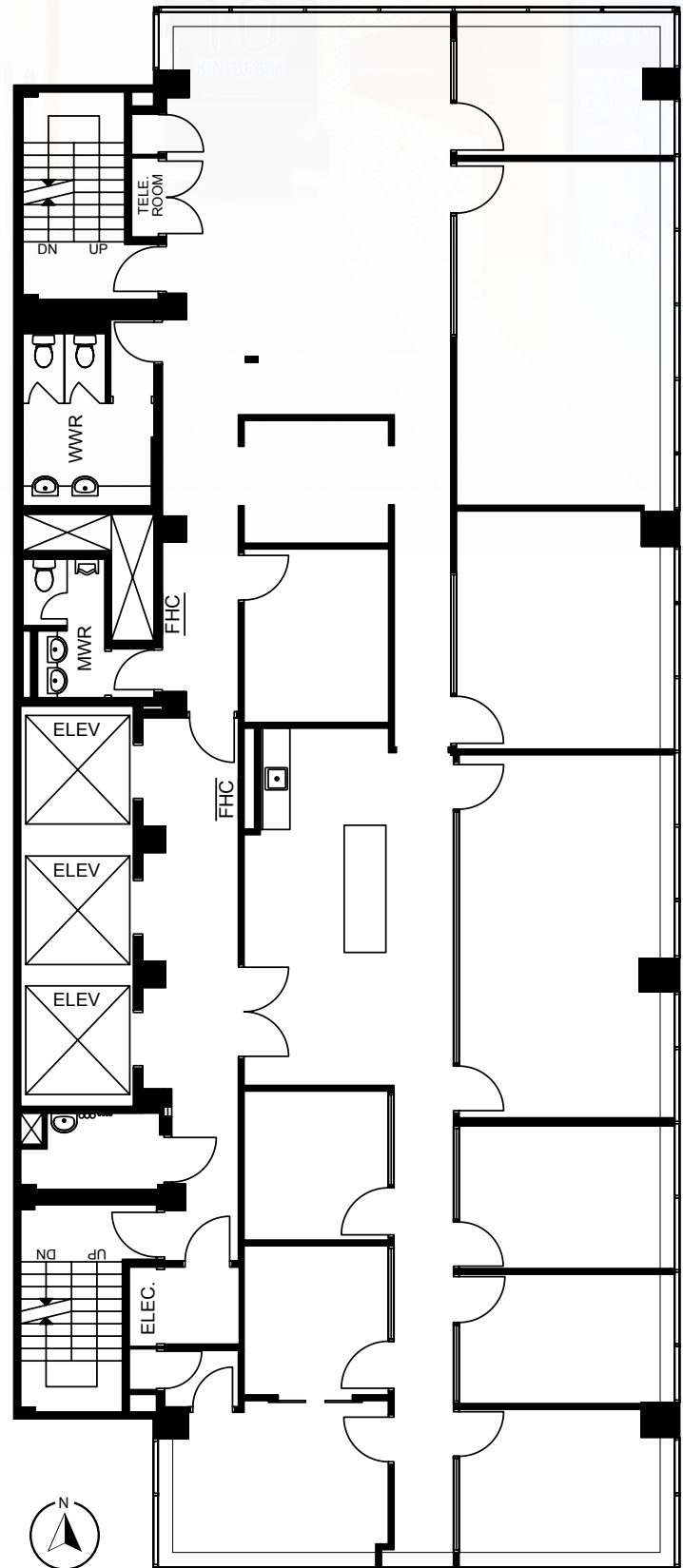
Contact Listing Agents

## ADDITIONAL RENT

\$28.56 PSF/Annum (2024 Est. )

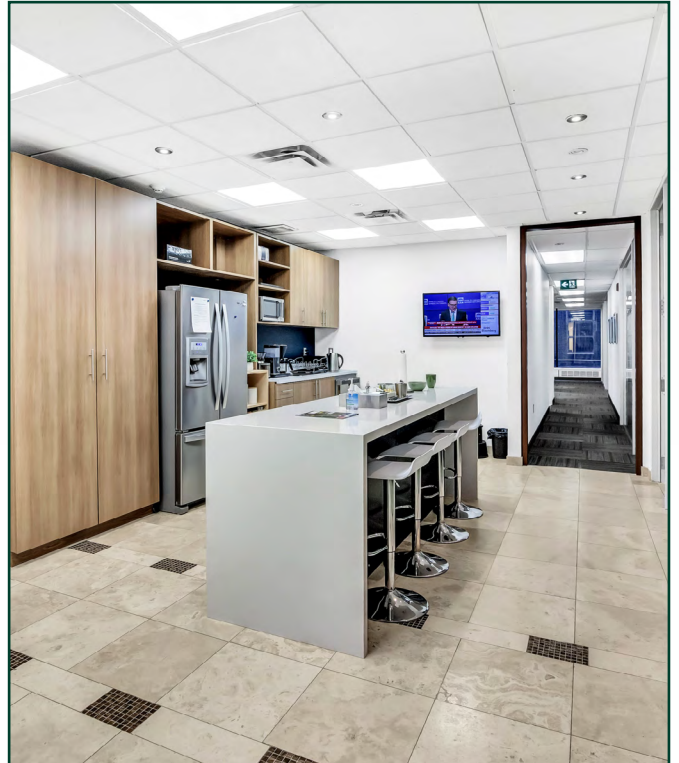
## COMMENT

- Full Floor.
- 10 offices, large boardroom, open style kitchen w/ bar seating, storage and server room.
- Partially furnished.





# Suite 200





# Suite 500

## SIZE

1,491 SF

## AVAILABILITY

Immediately

## NET RENT

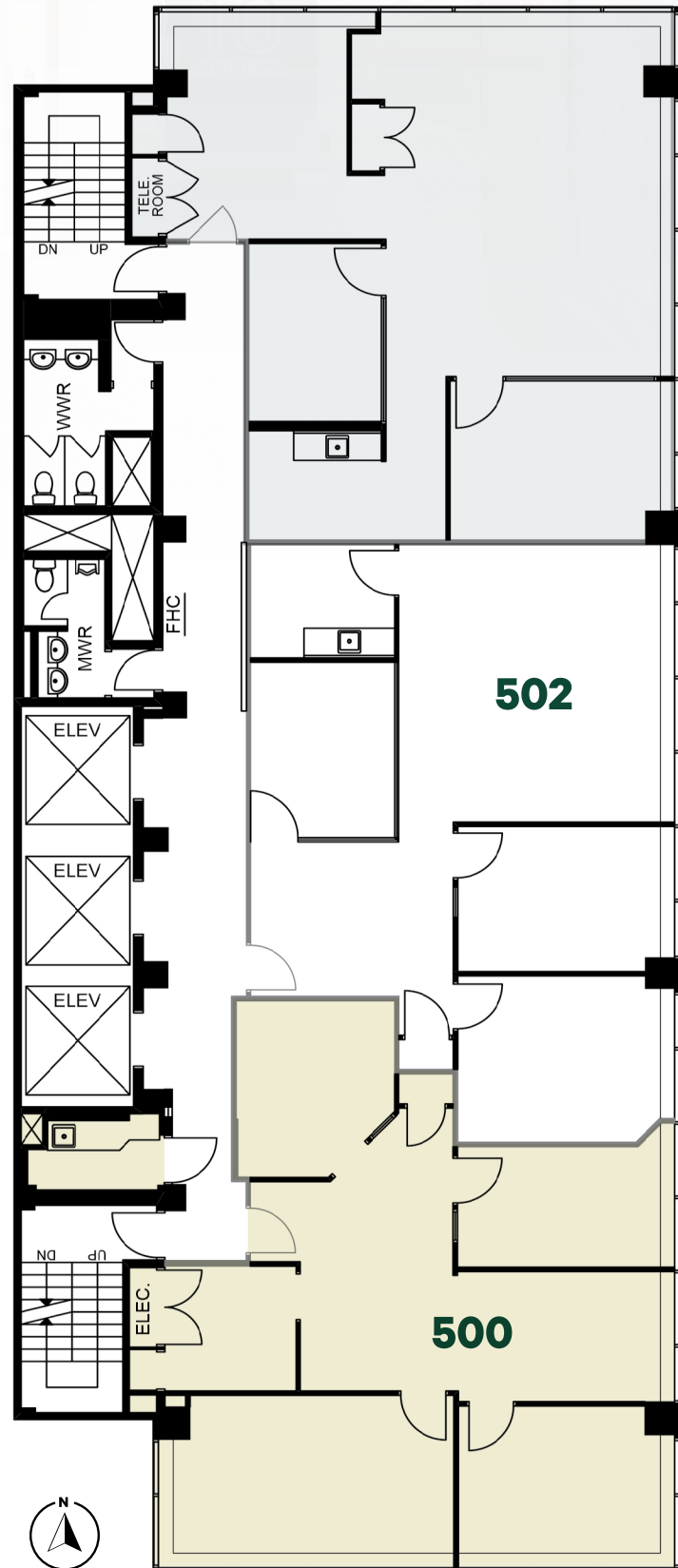
Contact Listing Agents

## ADDITIONAL RENT

\$28.56 PSF/Annum (2024 Est. )

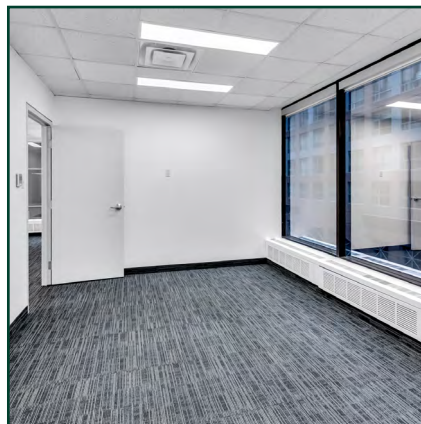
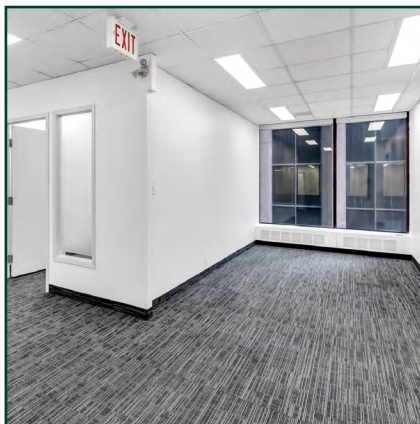
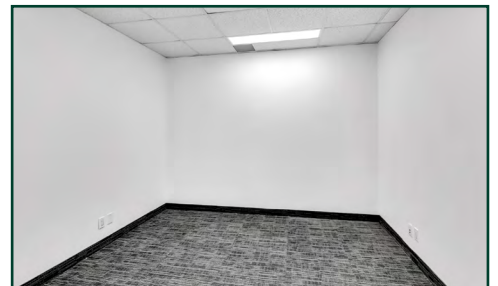
## COMMENT

- 3 offices, large meeting room, open space.
- Contiguous with Suite 502 for a total of 2,886 RSF.
- There is a dedicated kitchenette for this suite adjacent to the suite.





# Suite 500





## Suite 502

### SIZE

1,395 SF

### AVAILABILITY

Immediately

### NET RENT

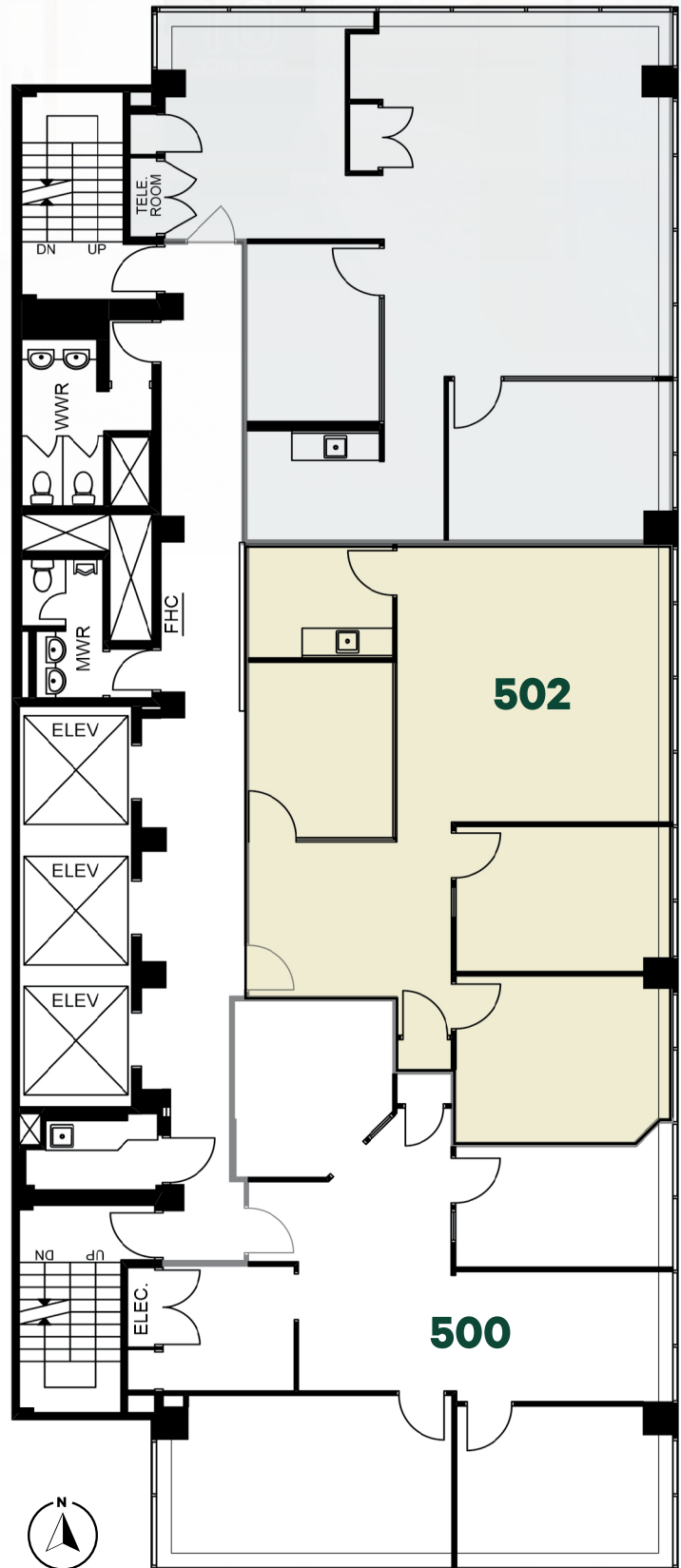
Contact Listing Agents

### ADDITIONAL RENT

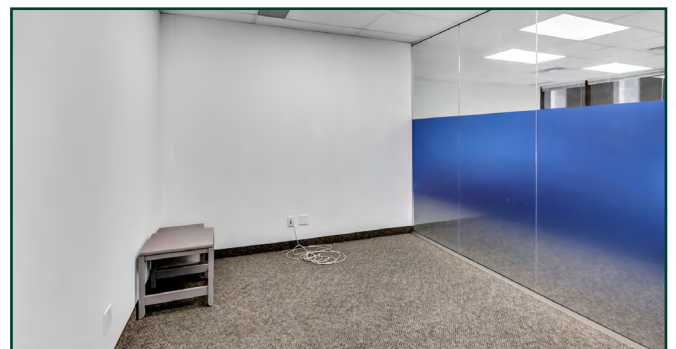
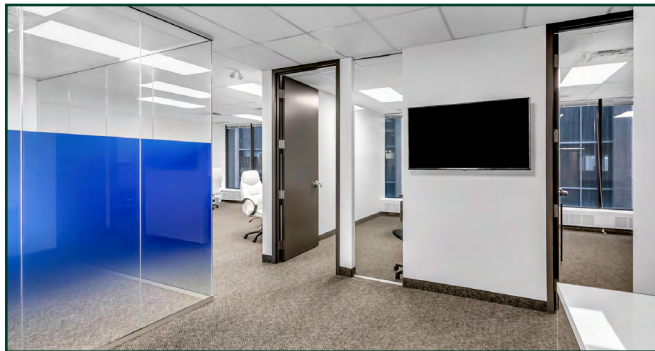
\$28.56 PSF/Annum (2024 Est. )

### COMMENT

- Built out with 2 offices/ meeting rooms, kitchenette and open workspace.
- Floor to ceiling windows.
- Furniture available.
- Contiguous with Suite 500 for a total of 2,886 RSF.



# Suite 502





# Suite 900

## SIZE

4,354 SF

## AVAILABILITY

Immediately

## NET RENT

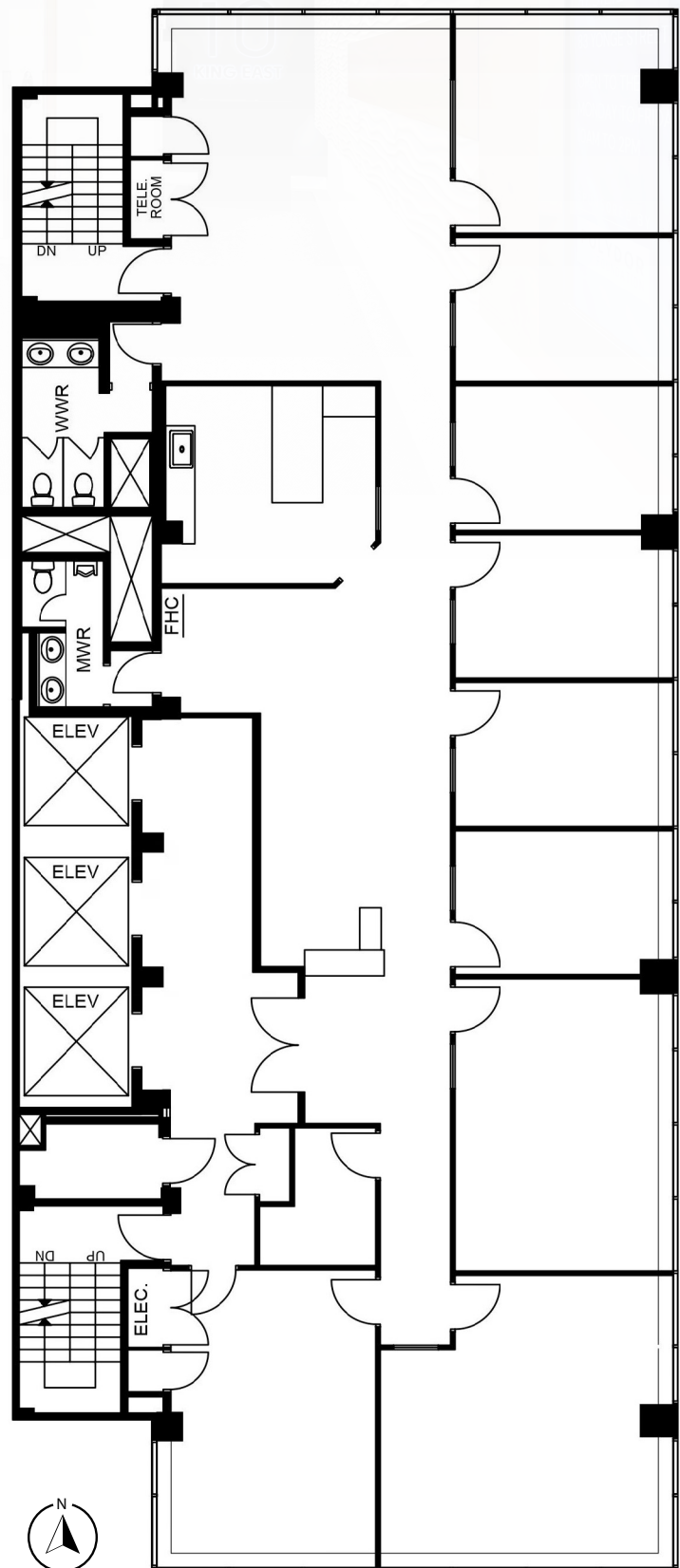
Contact Listing Agents

## ADDITIONAL RENT

\$28.56 PSF/Annum (2024 Est. )

## COMMENT

- Full floor
- Recently improved space
- Built out with 7 offices, 2 boardrooms, area with workstations, dedicated reception and kitchen/eatery.



# Suite 900





Suite  
**1401**

**SIZE**

1,446 SF

**AVAILABILITY**

Immediately

**NET RENT**

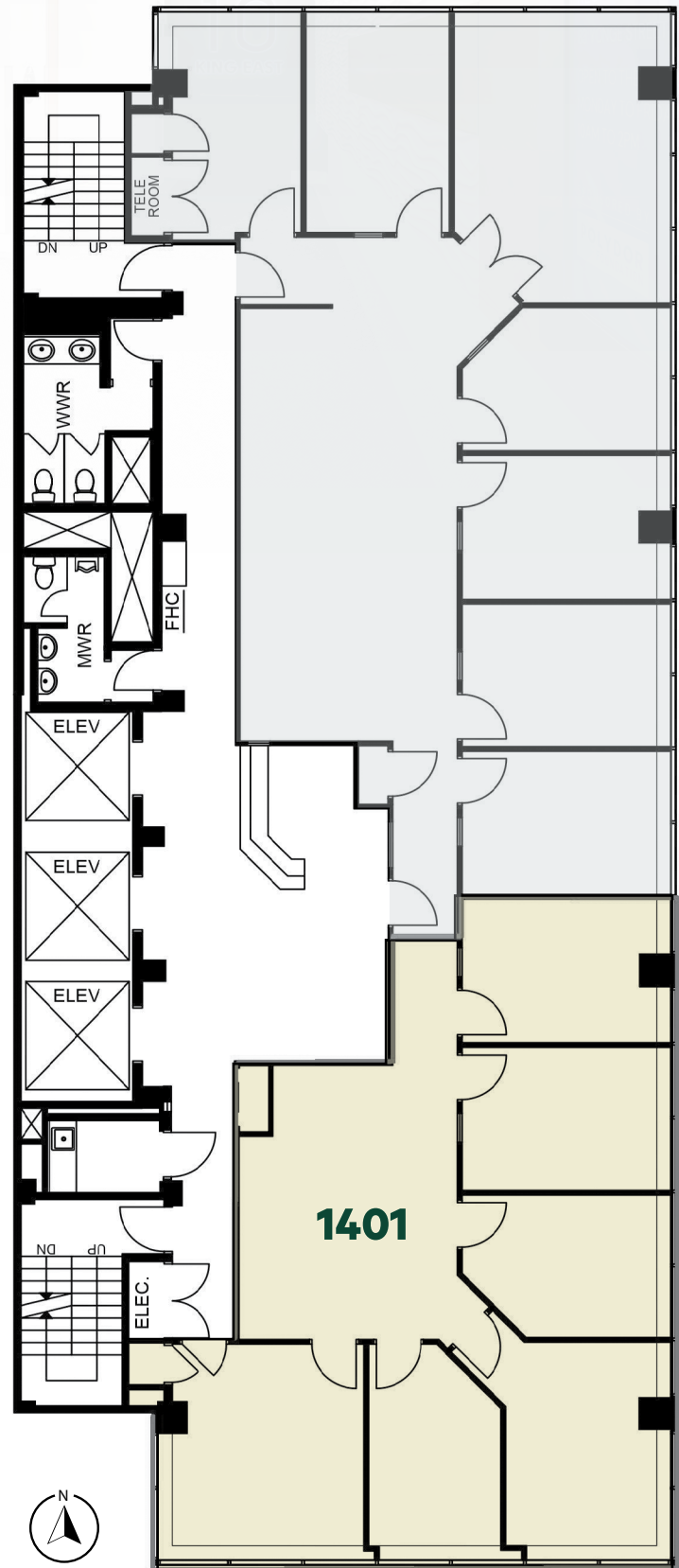
Contact Listing Agents

**ADDITIONAL RENT**

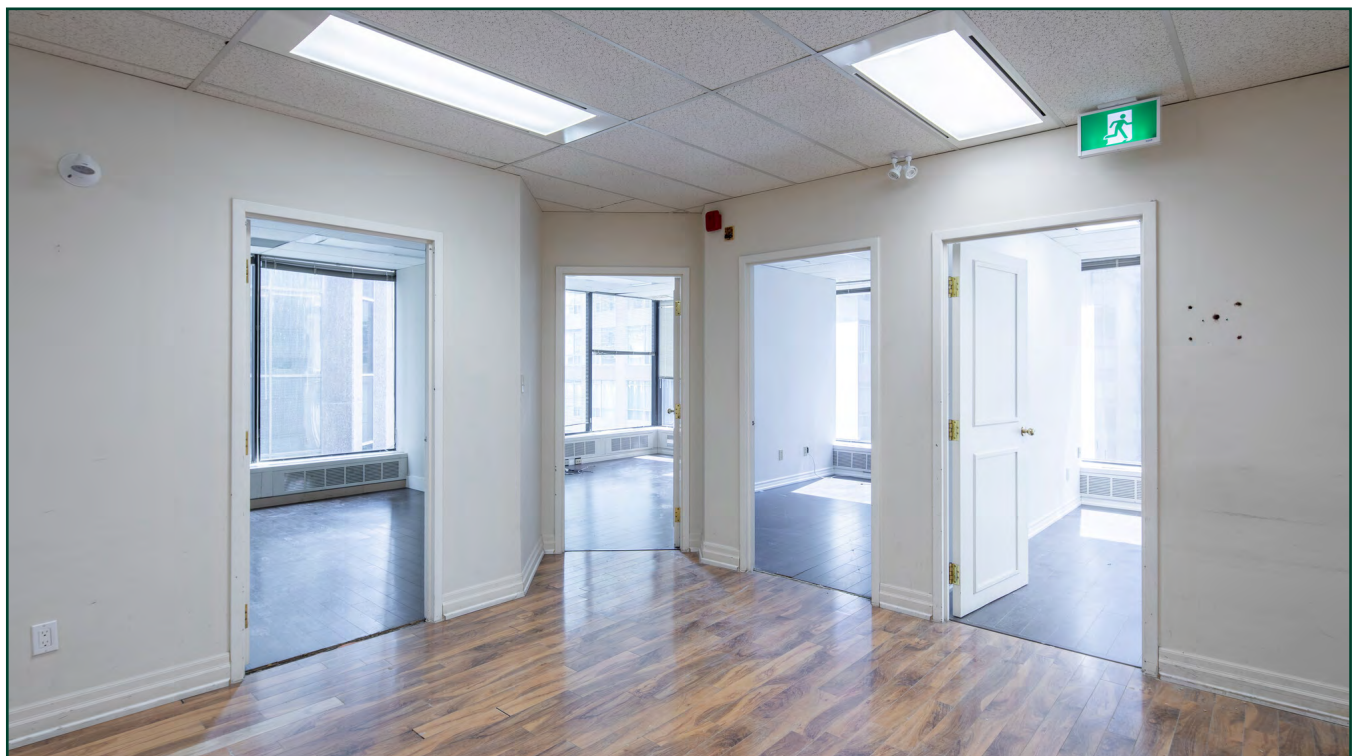
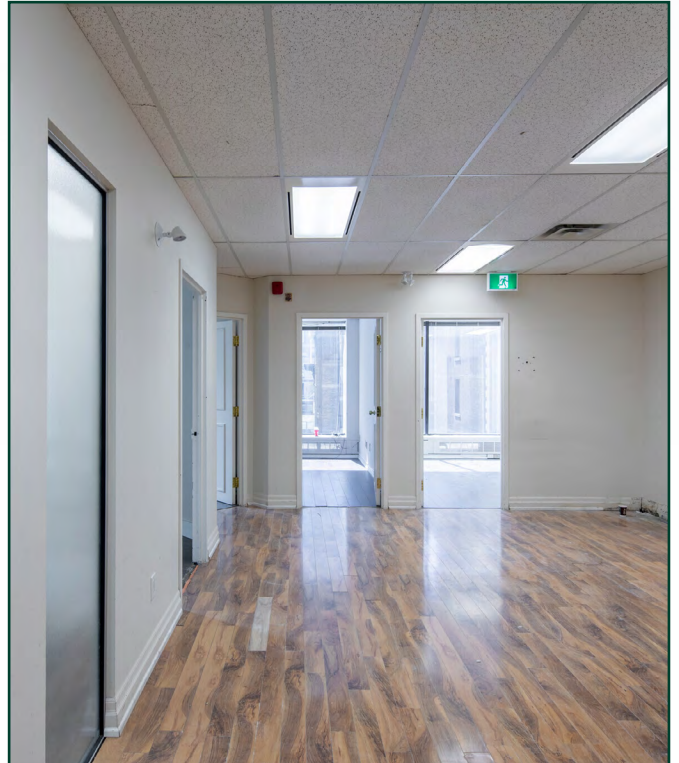
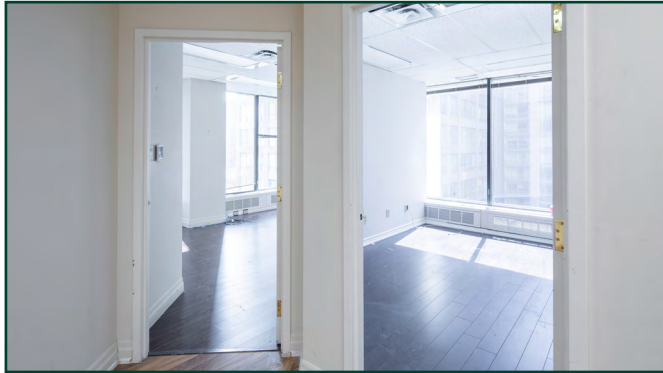
\$28.56 PSF/Annum (2024 Est. )

**COMMENT**

- 6 offices, open space.



Suite  
**1401**





# Suite 1500

## SIZE

4,354 SF

## AVAILABILITY

Immediately

## NET RENT

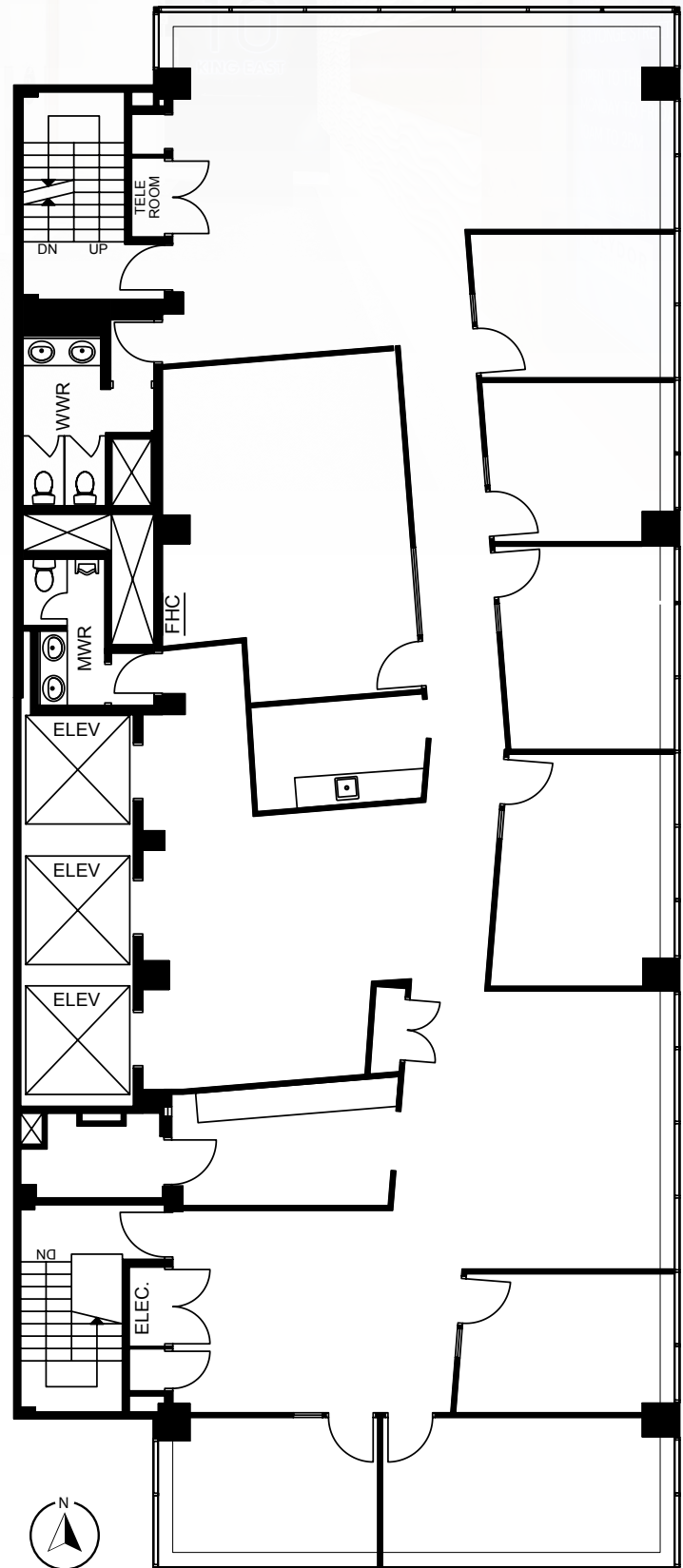
Contact Listing Agents

## ADDITIONAL RENT

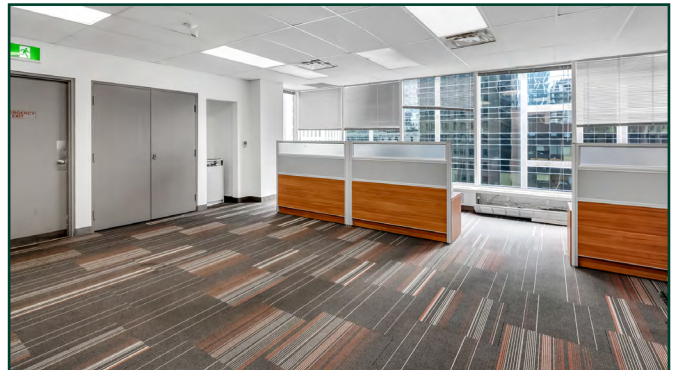
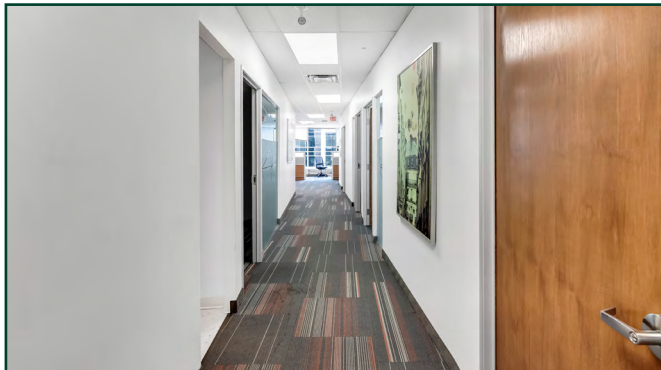
\$28.56 PSF/Annum (2024 Est. )

## COMMENT

- Full Floor.
- 5 offices, 3 meeting rooms, open space, kitchenette.

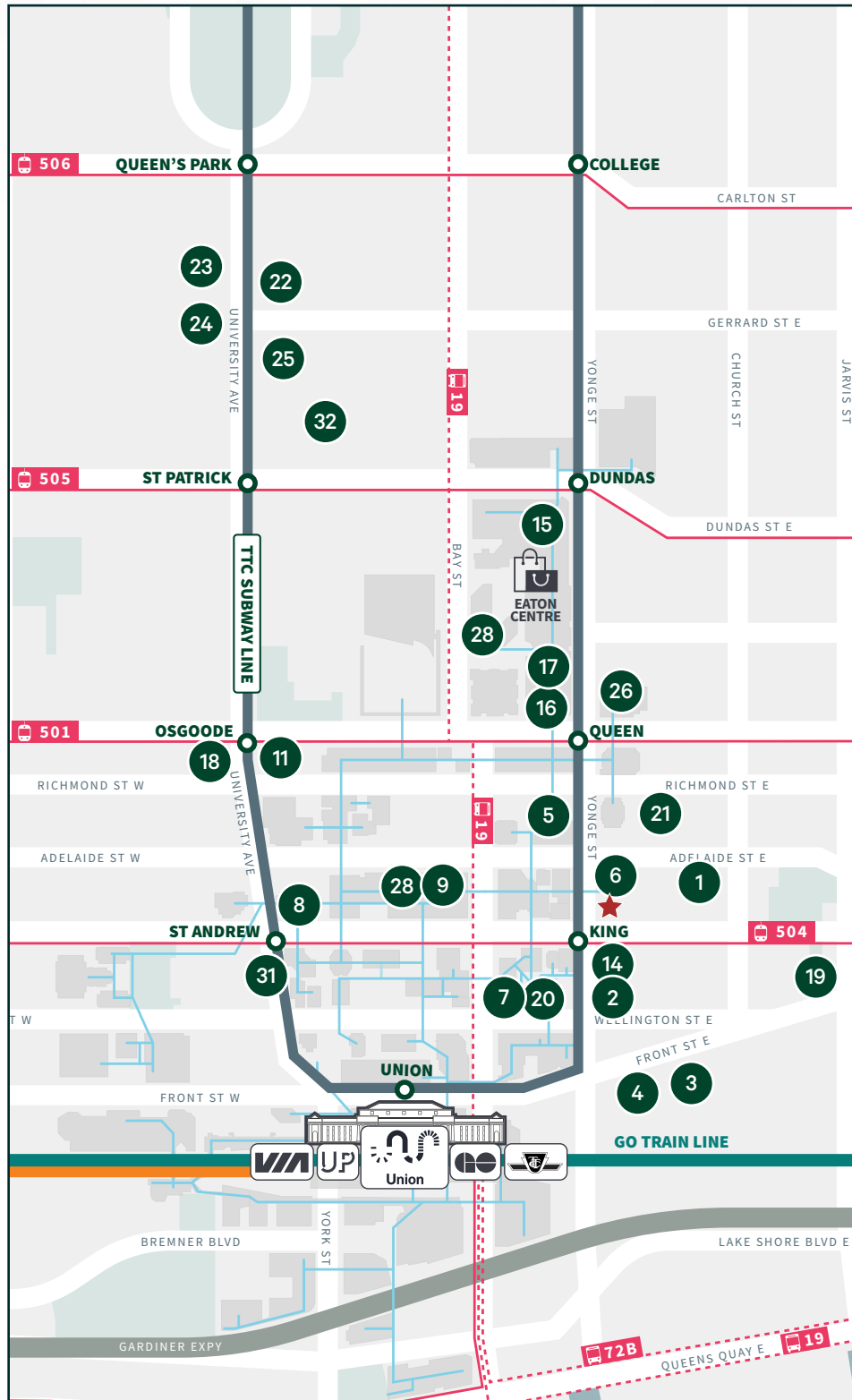


# Suite 1500





## Nearby Amenities



### FOOD & DRINKS

1. Terroni
2. Cantina Mercatto
3. The Old Spaghetti Factory
4. Eggspectation
5. Sunset Grill
6. CRAFT Beer Market
7. Walrus Pub & Beer Hall
8. Cactus Club
9. Hy's Steakhouse

### ENTERTAINMENT

10. Canadian Opera Company
11. Rogers Centre
12. CN Tower
13. Air Canada Centre

### SHOPPING

14. Shoppers Drug Mart
15. CF Toronto Eaton Centre
16. Hudson's Bay
17. Saks Fifth Avenue
18. Rexall

### GROCERIES

19. Metro
20. The Market by Longo's
21. Rabba Fine Foods

### HOSPITALS

22. Toronto General
23. Princess Margaret
24. Mt. Sinai
25. Sick Kids
26. St. Michaels

### FITNESS CENTRES

27. Goodlife
28. Adelaide Club
29. Equinox
30. F45 Downtown

### SCHOOLS

31. The University of Toronto  
Oral and Maxillofacial  
Surgery
32. Ryerson University  
Ted Rogers School of  
Management



CBRE

# 10 KING EAST

**Mackenzie Sharpe\***

Senior Vice President

+1 416 815 2382

[mackenzie.sharpe@cbre.com](mailto:mackenzie.sharpe@cbre.com)

**Andrea Sujer\*\***

Transaction Manager

+1 416 886 8191

[andrea.sujer@cbre.com](mailto:andrea.sujer@cbre.com)

**Peter Khouri**

Sales Representative

+1 647 943 4178

[peter.khouri@cbre.com](mailto:peter.khouri@cbre.com)

\*Broker \*\*Sales Representative

CBRE Limited | Real Estate Brokerage

145 King Street West,

Suite 1100 Toronto, ON M5H 1J8

+1 416 362 2244 | [www.cbre.ca](http://www.cbre.ca)

This disclaimer shall apply to CBRE Limited, Real Estate Brokerage, and to all other divisions of the Corporation; to include all employees and independent contractors ("CBRE"). The information set out herein, including, without limitation, any projections, images, opinions, assumptions and estimates obtained from third parties (the "Information") has not been verified by CBRE, and CBRE does not represent, warrant or guarantee the accuracy, correctness and completeness of the Information. CBRE does not accept or assume any responsibility or liability, direct or consequential, for the Information or the recipient's reliance upon the Information. The recipient of the Information should take such steps as the recipient may deem necessary to verify the Information prior to placing any reliance upon the Information. The Information may change and any property described in the Information may be withdrawn from the market at any time without notice or obligation to the recipient from CBRE. CBRE and the CBRE logo are the service marks of CBRE Limited and/or its affiliated or related companies in other countries. All other marks displayed on this document are the property of their respective owners. All Rights Reserved.