



114 W 2nd



2nd St. Station



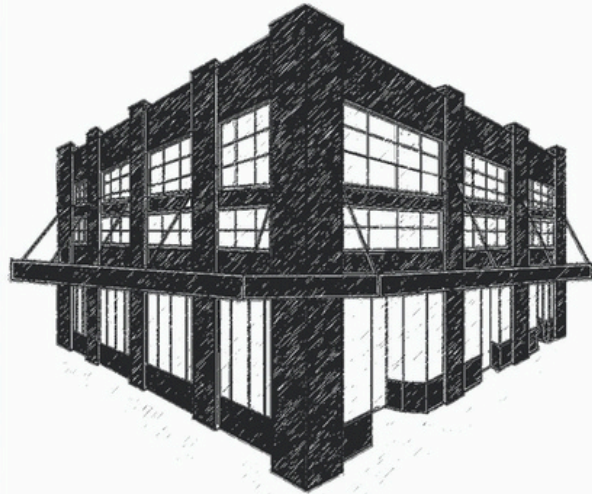
La Scala



Good Strangers Coffee



Suites G & H



**MC CRORY
TIMMERMAN**

The McCrory Timmerman Building
Anchoring 2nd and Main in Downtown Taylor, Texas

FOR LEASING INFORMATION:



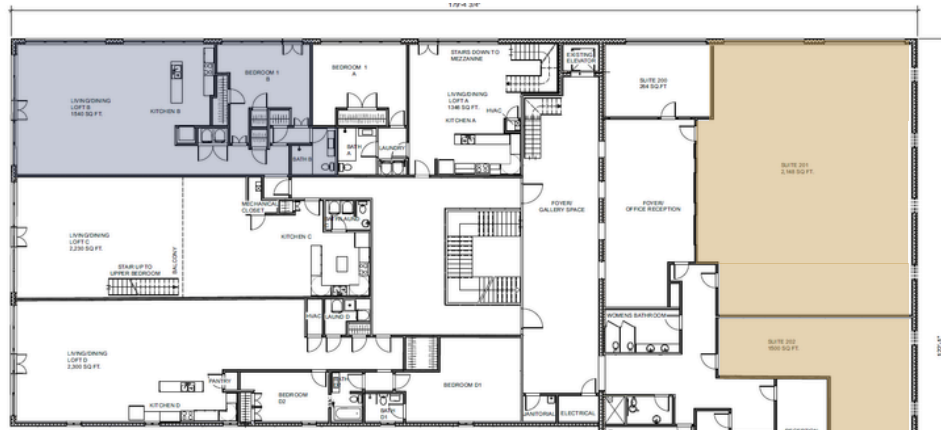
JULIE DOWNS

512.497.3967 | 737.864.5330
JULIEDOWNS4@GMAIL.COM

**201 N MAIN ST
TAYLOR, TX 76574**

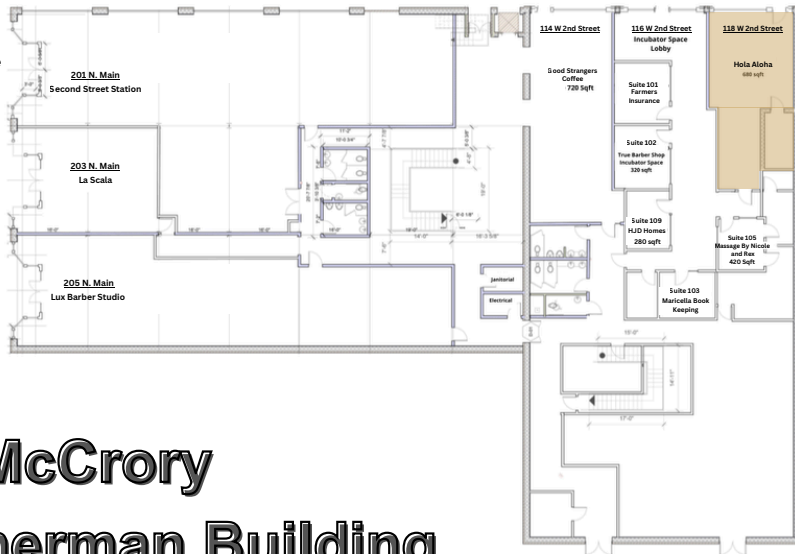
TIERRAGRANDESTATE.COM

Available Space:
Loft B | 1540 sqft
Suite 200 | 764 sqft
Suite 201 | 2148 sqft
Suite 202 | 1500 sqft
Suite 106 | 160 sqft
Suite 205 | 1500 sqft
Suite 203 | 1454 sqft
118 W. 2nd | 680 sqft
116 W 2nd #106 | 420 sqft



● Denotes available space
 ● Denotes available space Coming Soon

Floor 1



Floor 2

- Incubator Space
- Retail Space
- Premium Office Space
- Historic Restoration Project
- 90% occupied

The McCrory Timmerman Building

OUR STORY

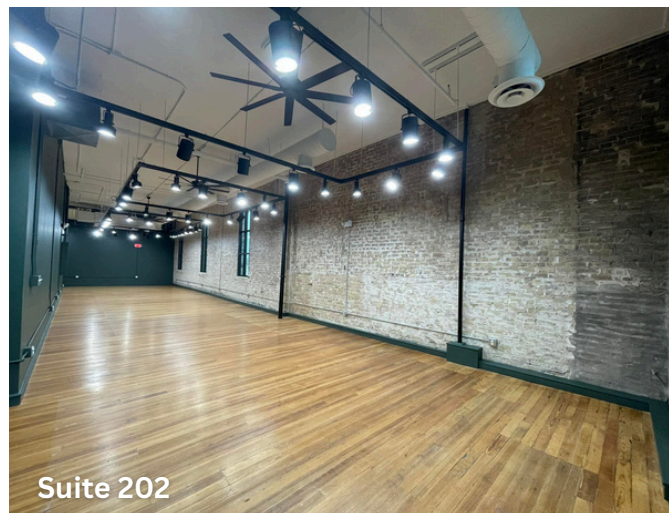
AS RESIDENTS OF TAYLOR, WE HAVE A STRONG COMMITMENT TO THE COMMUNITY AND THE PEOPLE WHO LIVE HERE.

The McCrory Timmerman Building is a landmark structure that mirrors the strength and character of generations of cotton farmers, merchants, tradesmen, and cattle ranchers who have made Central Texas their home. For one hundred twenty eight years, it has anchored the corner of Second and Main Streets downtown, and today, it welcomes new residents and businesses that are reviving a country town with a noble past.

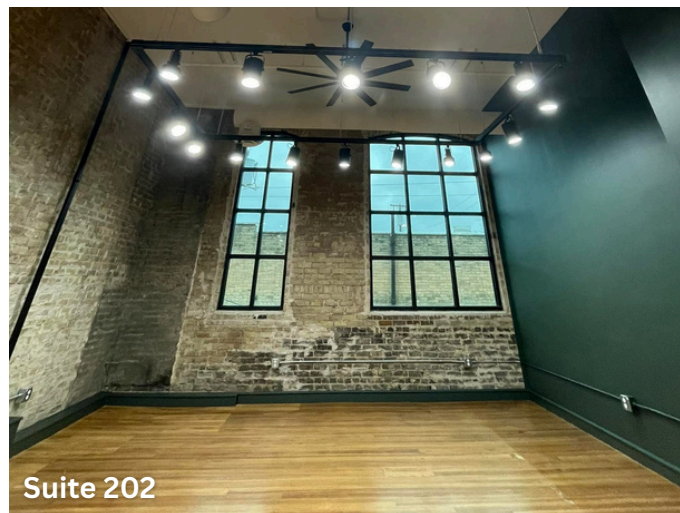


Building Fact:

The foundation of the building are bell footings which rest 10 feet beneath the ground level and the alley surface. They are 62" thick at their base and taper to 34" at ground level. The first floor wall thickness is 18-20" and the upper level 16".



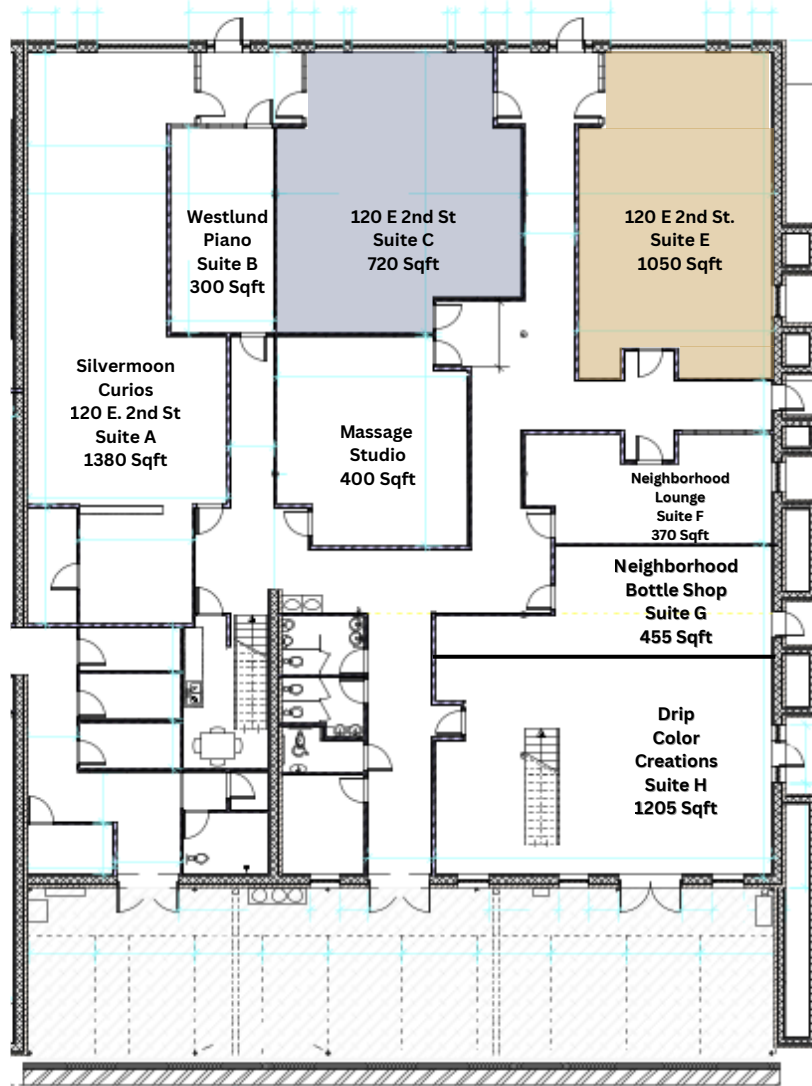
Suite 202



Suite 202

Available Space:
Suite C | 764 sqft
Suite E | 1050 sqft

- Denotes available space
- Denotes available space - COMING SOON



The Titsworth Building



FOR LEASING INFORMATION:



JULIE DOWNS

512.497.3967 | 737.864.5330
 JULIEDOWNS4@GMAIL.COM

