



For Lease

3131 Lomita Boulevard Torrance, CA 90505

43,010 SF Industrial for Lease

Contact us:

Jeff Smart
Senior Executive Vice President
+1 310 321 1812
jeffrey.smart@colliers.com

Elizabeth Capati
Senior Associate
+1 310 321 1855
elizabeth.capati@colliers.com

Colliers
2141 Rosecrans Ave
Suite 1120 El Segundo, CA 90245

Building:

- 43,010 SF
- 7,000 SF Office Space
- 22' Clear Height
- 6 GL Loading Doors
- 1200 Amp Power
- 117 Parking Stalls
- M2 Zoning

Pricing:

- \$1.25 Gross / PSF / Mo
- * Pricing is for Year One and will remain \$1.95 Gross/ PSF / Mo Thereafter

Highlights:

- Prime Torrance Location



Jeff Smart

Senior Executive Vice President
Lic. 00918873
+1 310 321 1812
jeffrey.smart@colliers.com

Elizabeth Capati

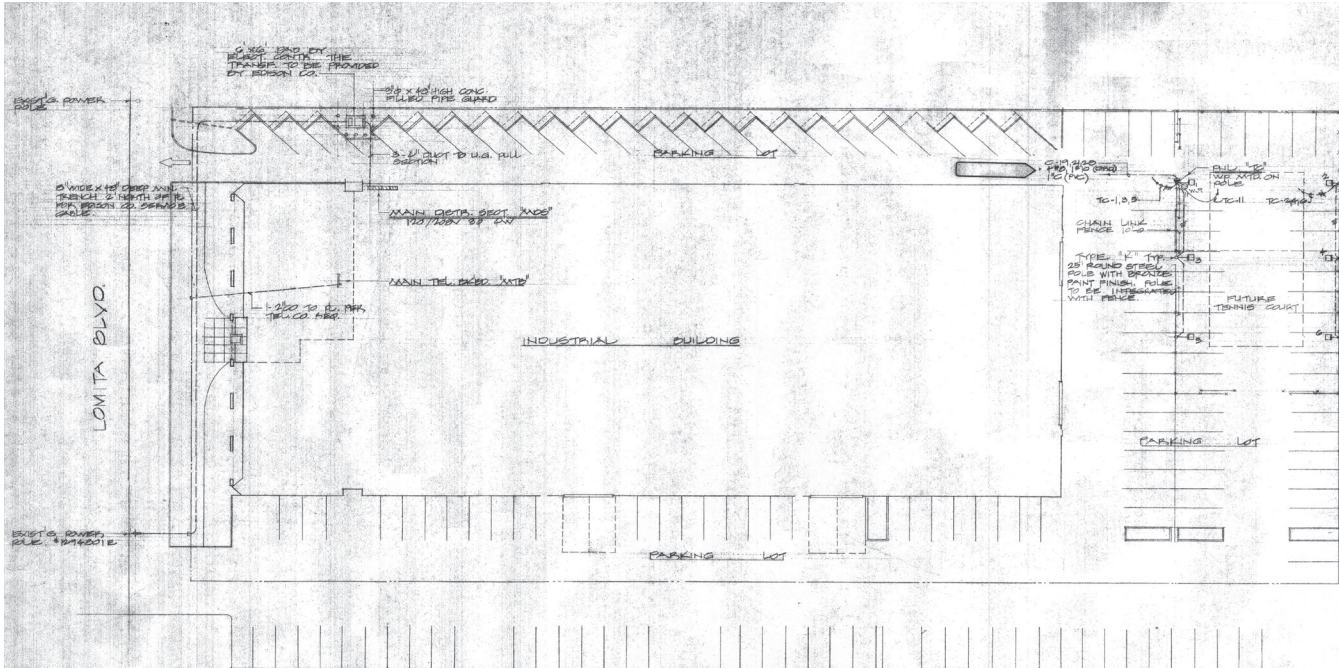
Senior Associate
Lic. 02109628
+1 310 321 1855
elizabeth.capati@colliers.com



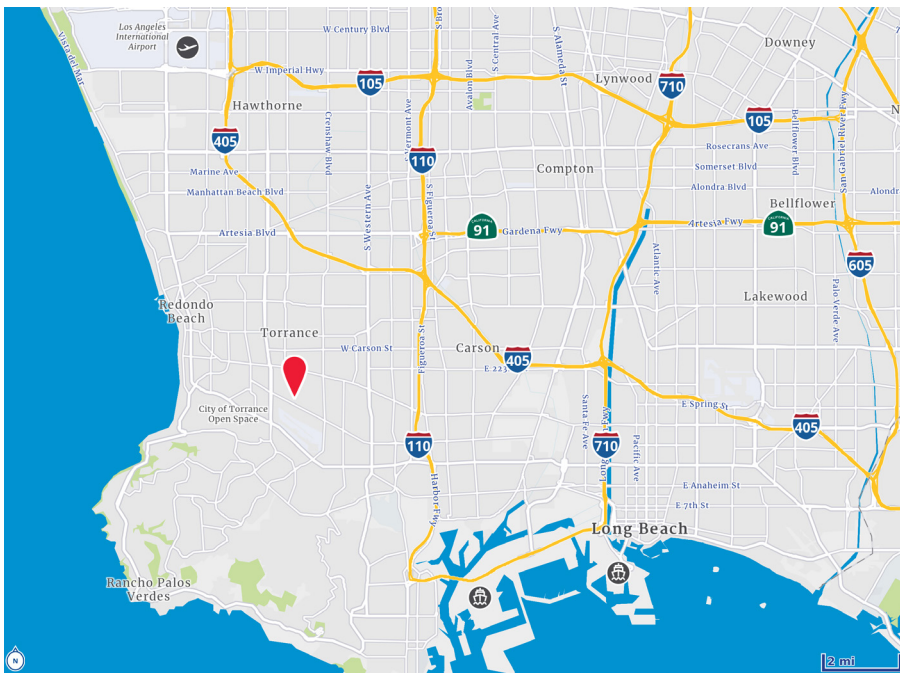
3131 Lomita Boulevard

Site Plan & Location

Building Plan



Location



Get In Touch

Jeff Smart

Senior Executive Vice President

Lic. 00918873

+1 310 321 1812

jeffrey.smart@colliers.com

Elizabeth Capati

Senior Associate

Lic. 02109628

+1 310 321 1855

elizabeth.capati@colliers.com

This document has been prepared by Colliers International for advertising and general information only. Colliers International makes no guarantees, representations or warranties of any kind, expressed or implied, regarding the information including, but not limited to, warranties of content, accuracy and reliability. Any interested party should undertake their own inquiries as to the accuracy of the information. Colliers International excludes unequivocally all inferred or implied terms, conditions and warranties arising out of this document and excludes all liability for loss and damages arising there from. This publication is the copyrighted property of Colliers International and/or its licensor(s). ©2021. All rights reserved.

