

For Lease

3,536 SF

Retail/Office Space

The Brix

75 S 26th Street

Pittsburgh, PA 15203



Highlights

- 3,536 Sq. Ft.
- Retail/Office/Restaurant/Medical/Salon Space
- Former Bartram House Bakery
- Second Generation Restaurant
- Fully Built-Out
- Located in the ground floor of high end Brix residential apartment building in trendy South Side



For more information, contact:

JOHN ELIOPOULOS

+1 412 613 6229

jeliopoulos@naiburnsscalo.com

NAI Burns Scalo
COMMERCIAL REAL ESTATE SERVICES, WORLDWIDE

For Lease

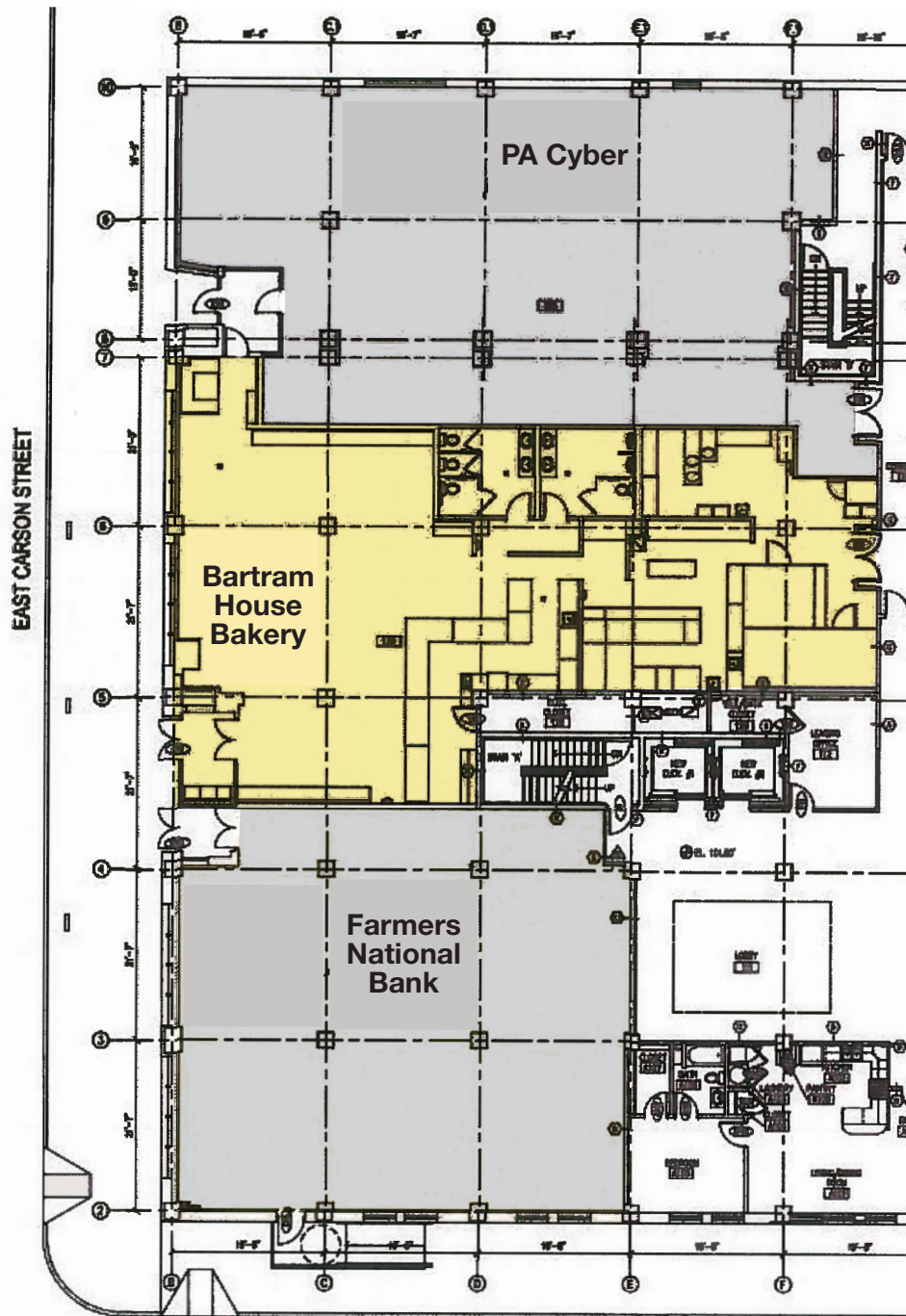
3,536 SF

Retail/Office Space

The Brix

75 S 26th Street

Pittsburgh, PA 15203



For more information, contact:

JOHN ELIOPOULOS

+1 412 613 6229

jeliopoulos@naiburnsscalo.com

NAI Burns Scalo

COMMERCIAL REAL ESTATE SERVICES, WORLDWIDE

For Lease

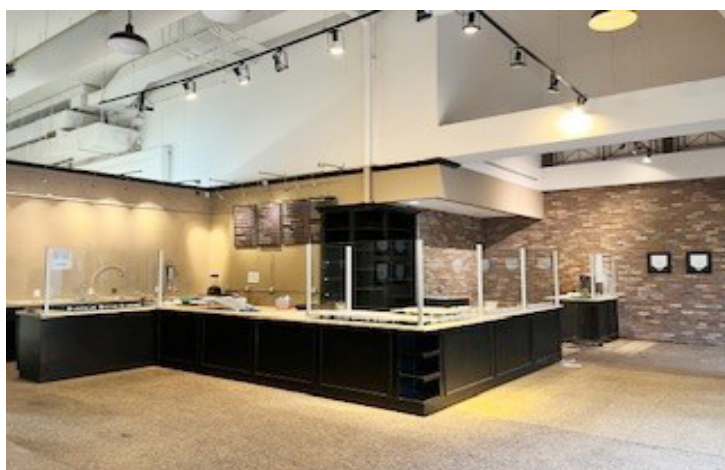
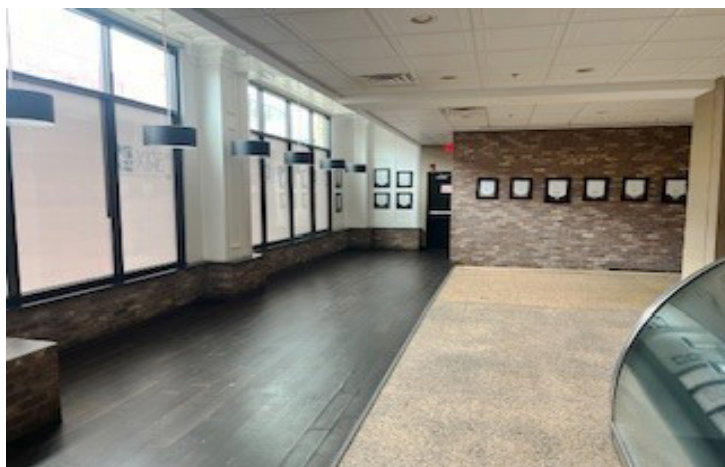
3,536 SF

Retail/Office Space

The Brix

75 S 26th Street

Pittsburgh, PA 15203



For more information, contact:

JOHN ELIOPOULOS

+1 412 613 6229

jeliopoulos@naiburnscalco.com

NAI Burns Scalo

COMMERCIAL REAL ESTATE SERVICES, WORLDWIDE

For Lease

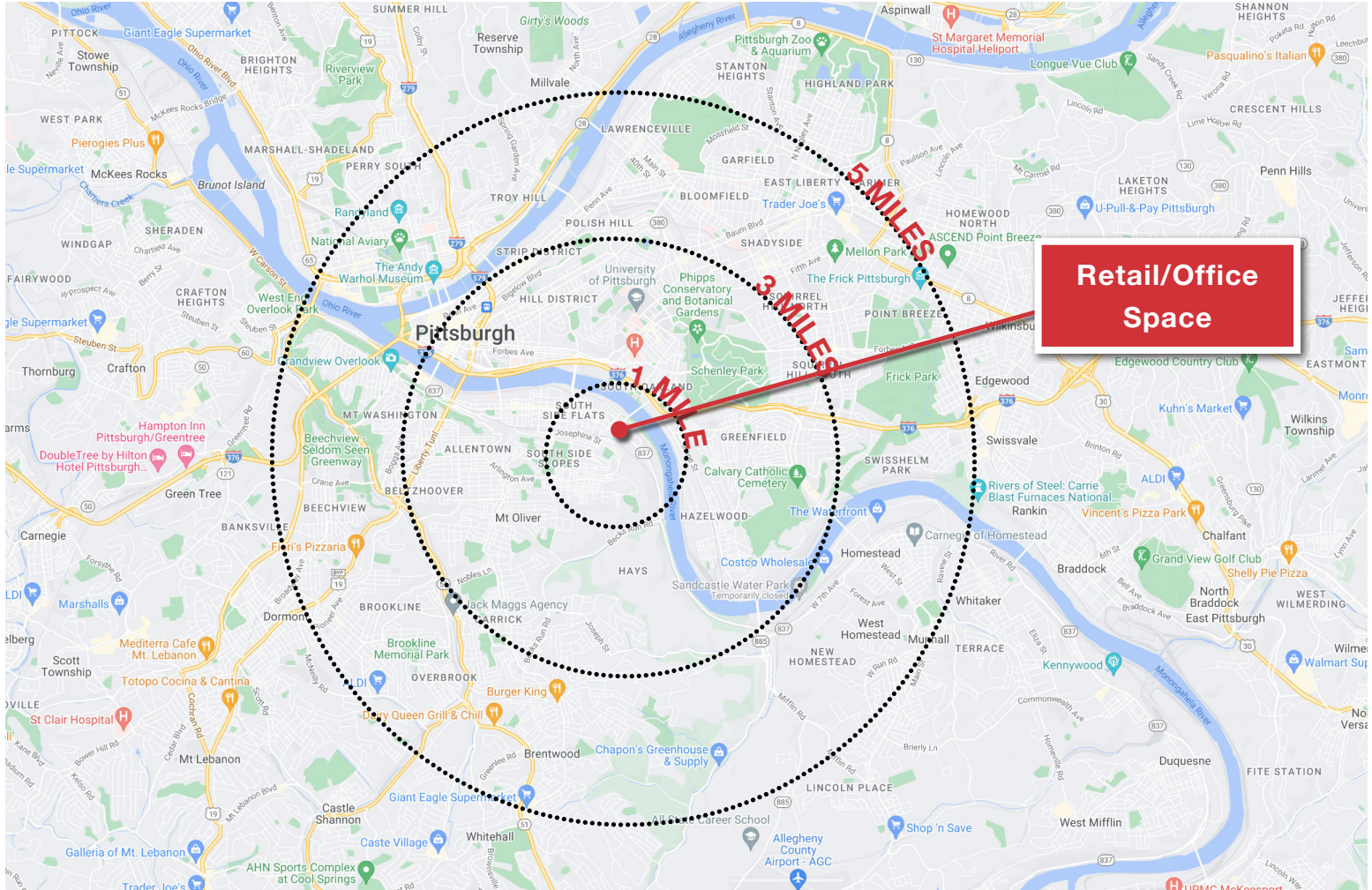
3,536 SF

Retail/Office Space

The Brix

75 S 26th Street

Pittsburgh, PA 15203



CATEGORY	1 MILE	3 MILES	5 MILES
2023 Population	19,480	172,043	390,213
2023 Households	9,323	78,477	177,921
Avg Household Income	\$63,692	\$79,020	\$77,485
Daytime Employment	20,332	327,248	403,818
Businesses	2,337	20,819	29,410

For more information, contact:
JOHN ELIOPOULOS
+1 412 613 6229
jeliopoulos@naiburnsscalo.com

NAI Burns Scalo
COMMERCIAL REAL ESTATE SERVICES, WORLDWIDE

No warranty or representation, express or implied, is made as to the accuracy of the information contained herein, and the same is submitted subject to errors, omissions, change of price, rental or other conditions, prior sale, lease or financing, or withdrawal without notice, and of any special listing conditions imposed by our principals no warranties or representations are made as to the condition of the property or any hazards contained herein are any to be implied.