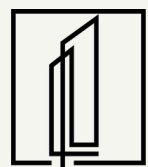




**FOR  
LEASE**

1255 W Temple St

**Restaurant | Catering  
Kitchen | Retail space**



**URBANLIME**  
REAL ESTATE

**Ty Del Re**  
Vice President  
323.979.7535 | Ty@urbanlimere.com  
BRE # 01947880

**Chris Stewart**  
Associate  
213.400.4454 | Chris@urbanlimere.com  
BRE # 02142374



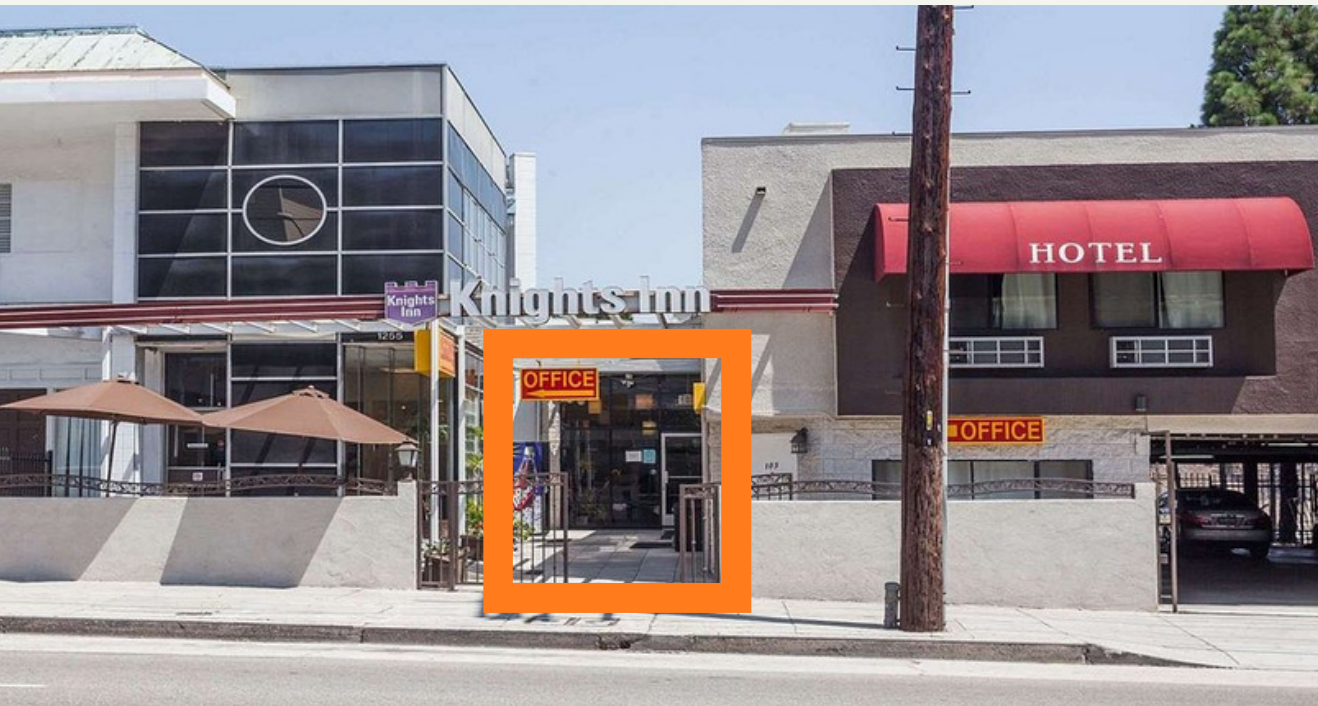


# Lease Opportunity



## OVERVIEW:

- Size: +/- 1,200 SF
  - Rent: \$3.00 PSF + NNN
- 
- Former Sushi space
  - Open Floor Plan
  - Attached to Knights Inn
  - Kitchen with Hood and some equipment
  - Possible Parking
  - Nearby Thunderbolt, Parks Finest, Clark Street Bread, Bar Henry, Guisados, Farm Cup Coffee, Gra Pizzeria, and more.



**Perfect For:**  
**Cloud/Catering Kitchen | Restaurant |**  
**Coffee/Cafe | Retail**







# Contact

## Ty Del Re

Vice President

323.979.7535 | Ty@urbanlimere.com

BRE # 01947880

## Chris Stewart

Associate

213.400.4454 | Chris@urbanlimere.com

BRE # 02142374

www.urbanlimere.com

@urbanlime\_realestate

*Disclaimer: This information has been secured from sources we believe to be reliable, however we make no representation or warranties as to the accuracy of the information.*

References to square footage or age are approximate.

