

FOR LEASE



2681 WILLAMETTE STREET - EUGENE, OREGON

## WILLAMETTE STREET RETAIL

- 7,452 SF (Divisible)
  - 3,325 SF on Street Level
  - 4,127 SF on Lower Level
- Street Front Presence
- On-Site Parking

*Lease Rate:* Street Level: \$1.85/SF, Gross | Lower Level: \$1.00/SF, Gross

Landlord Pays Property Tax & Insurance

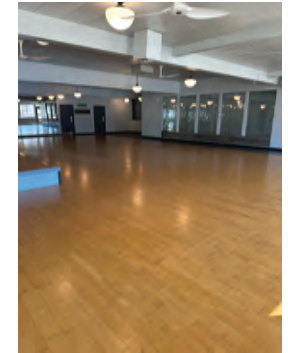
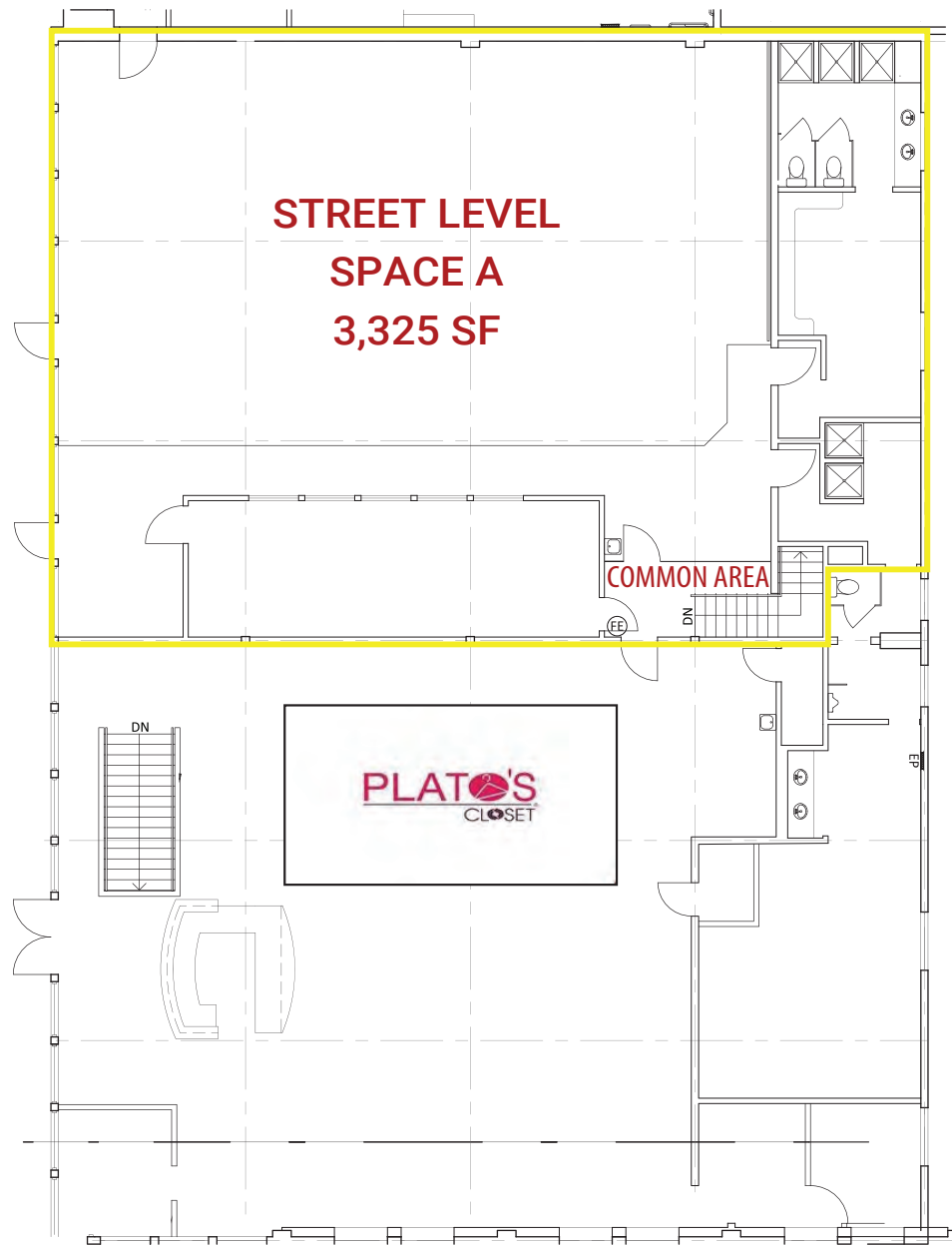


*For more information contact:*

**BILL NEWLAND**  
bill@campbellre.com | (541) 484-2214  
Licensed in the State of Oregon

**TIM CAMPBELL**  
timc@campbellre.com | (541) 484-2214  
Licensed in the State of Oregon

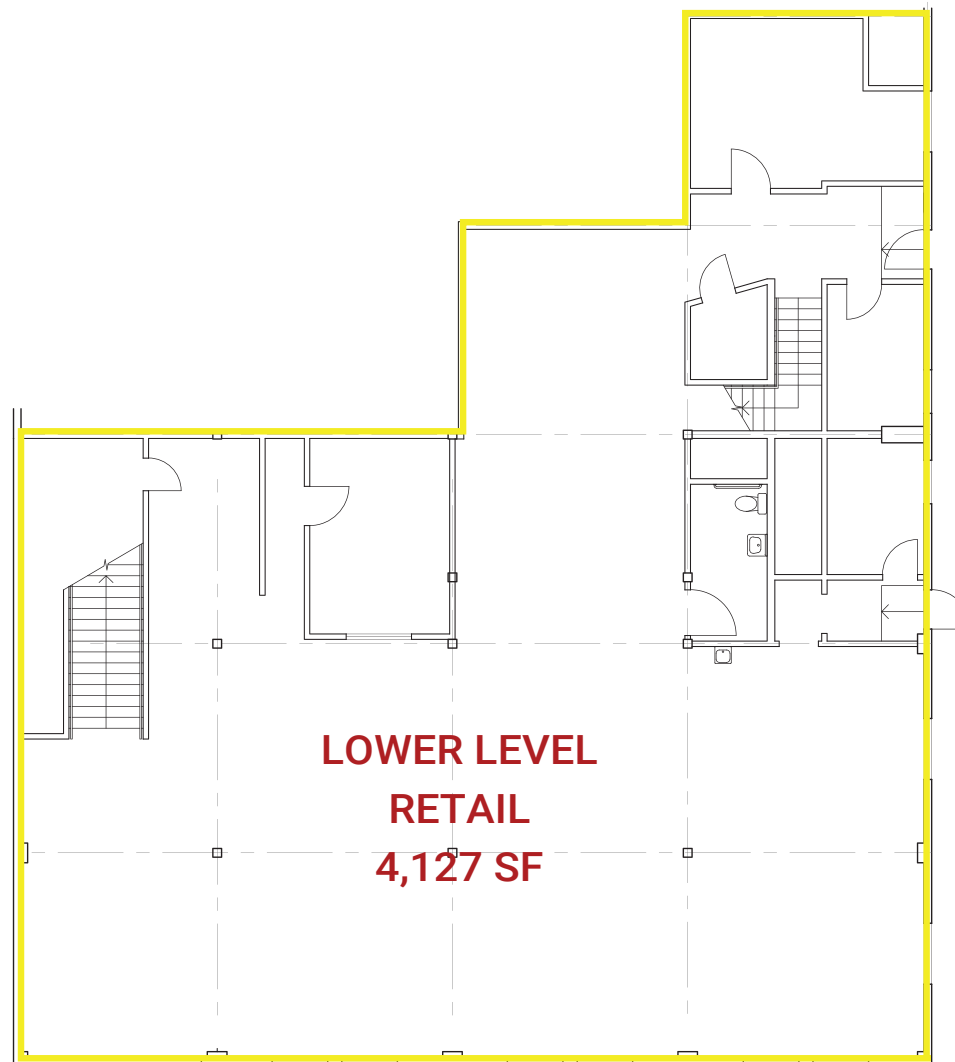
## STREET LEVEL FLOOR PLAN



**SPACE A: Spacious and versatile - perfect for dance, karate, or art performances!**

## LOWER LEVEL FLOOR PLAN

---



The information in this package was obtained from sources deemed reliable, and is not guaranteed by agent. Package is subject to change, error or omission, prior sale or lease, correction or withdrawal. Any party contemplating purchase is urged to conduct their own independent study and inspection.



# PROXIMITY & AMENITIES



The information in this package was obtained from sources deemed reliable, and is not guaranteed by agent. Package is subject to change, error or omission, prior sale or lease, correction or withdrawal. Any party contemplating purchase is urged to conduct their own independent study and inspection.