

317 S 48TH STREET

SUITE 130 | PHOENIX, AZ

30,071 SF OFFICE/WAREHOUSE SPACE

FOR SUBLEASE

SUBLEASE EXPIRES MAY 31, 2027



CBRE



PROPERTY OVERVIEW



±30,071 SF office/warehouse space



±2,500 SF office



24' Clear height



Evap cooled warehouse



Five (5) truckwell doors



One (1) grade door



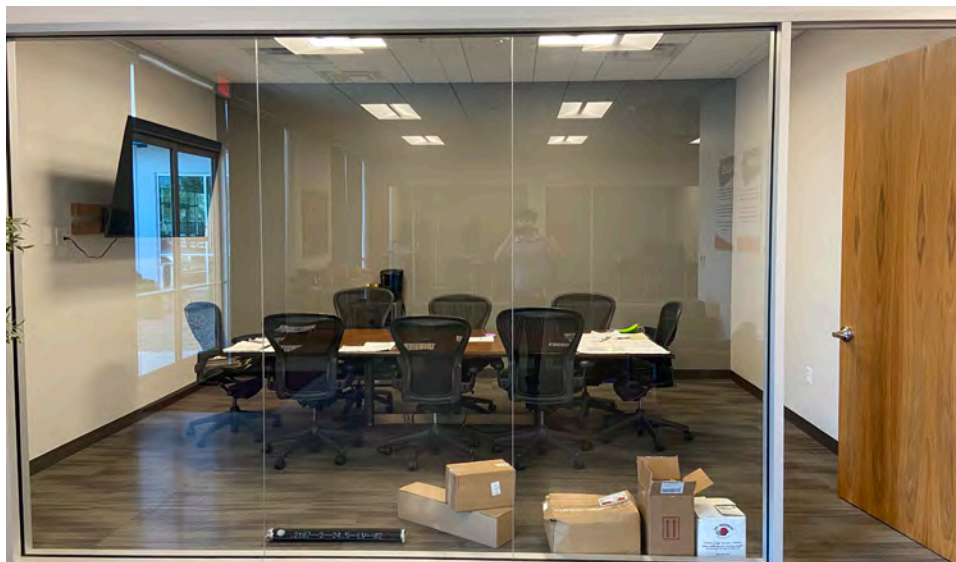
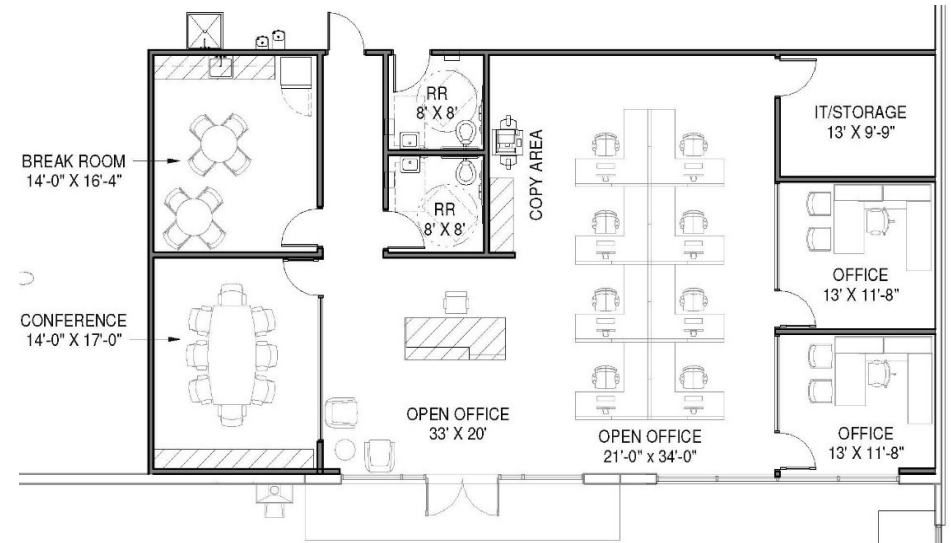
ESFR sprinkler system



(1) 250 amps 277/480v
(2) 225 amps 122/208v



OFFICE PLAN





FOR MORE INFORMATION,
PLEASE CONTACT:

SERENA WEDLICH, SIOR

Senior Vice President

+1 602 735 5633

serena.wedlich@cbre.com



CBRE

© 2025 CBRE, Inc. All rights reserved. This information has been obtained from sources believed reliable but has not been verified for accuracy or completeness. CBRE, Inc. makes no guarantee, representation or warranty and accepts no responsibility or liability as to the accuracy, completeness, or reliability of the information contained herein. You should conduct a careful, independent investigation of the property and verify all information. Any reliance on this information is solely at your own risk. CBRE and the CBRE logo are service marks of CBRE, Inc. All other marks displayed on this document are the property of their respective owners, and the use of such marks does not imply any affiliation with or endorsement of CBRE.