

**FOR LEASE**

SUITES C + D



1745 W 5th AVE - UNIT C & D - EUGENE, OREGON 97402

## WAREHOUSE WITH OFFICE

- HIGH QUALITY CONCRETE BUILDING
- 8,120 - 19,860 SF AVAILABLE
  - SUITE C: 11,680 SF
  - SUITE D: 8,120 SF
- 20' CLEAR HEIGHT
- SPRINKLERS
- 4 GRADE-LEVEL DOORS
- PORTABLE LOADING DOCK AVAILABLE FOR TENANT USE

*Lease Rates:* SUITE C: \$0.60/SF, NNN / SUITE D: \$0.70/SF, NNN

*For more information contact:*

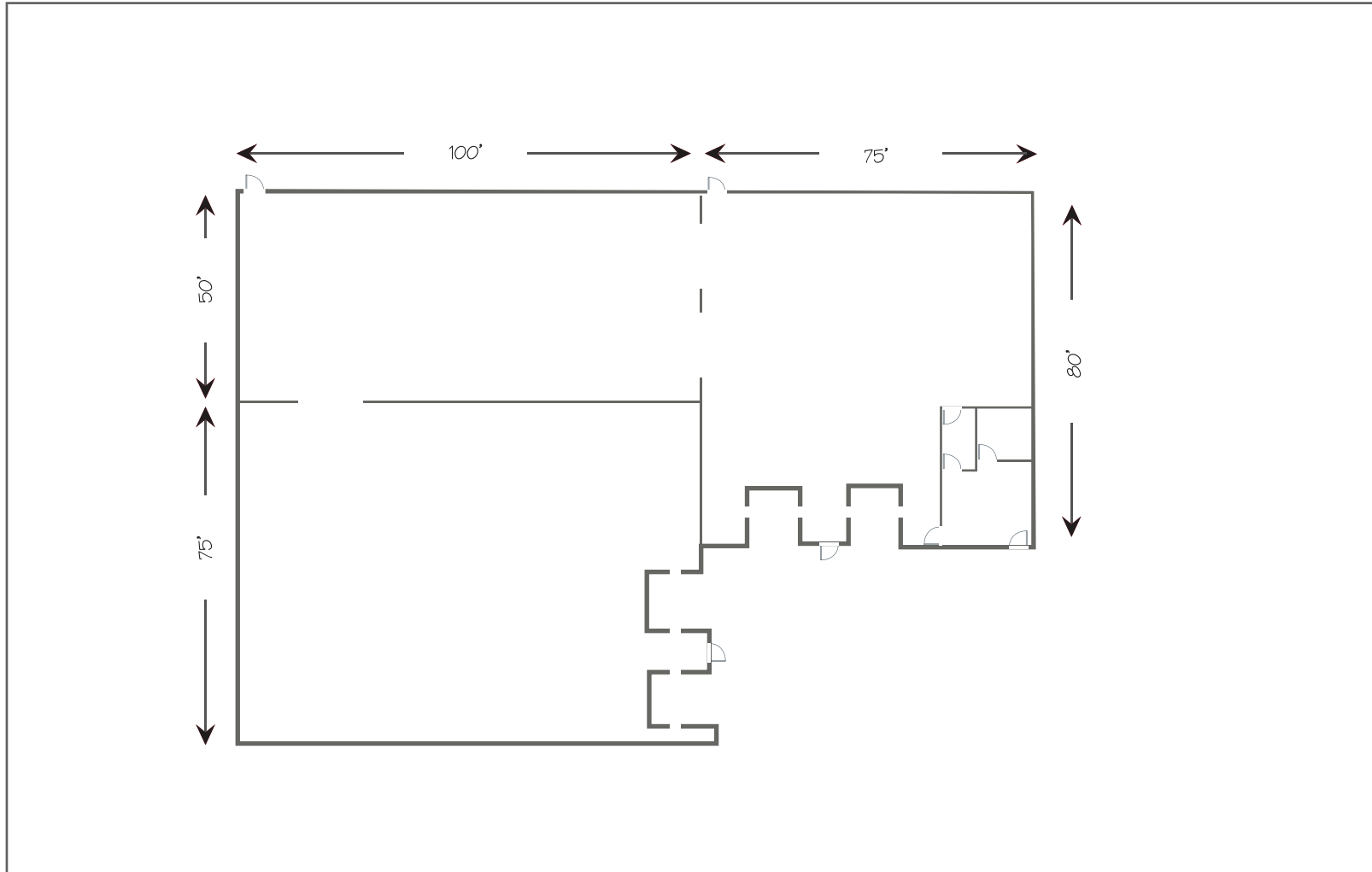


**BILL NEWLAND**  
bill@campbellre.com | (541) 484-2214  
Licensed in the State of Oregon

**TIM CAMPBELL**  
timc@campbellre.com | (541) 484-2214  
Licensed in the State of Oregon

The information in this package was obtained from sources deemed reliable, and is not guaranteed by agent. Package is subject to change, error or omission, prior sale or lease, correction or withdrawal. Any party contemplating purchase is urged to conduct their own independent study and inspection.

# SPACE FLOOR PLAN



\* SIZE INCLUDES 2ND FLOOR SPACE (680 SF IN BOTH SUITES C AND D))

The information in this package was obtained from sources deemed reliable, and is not guaranteed by agent. Package is subject to change, error or omission, prior sale or lease, correction or withdrawal. Any party contemplating purchase is urged to conduct their own independent study and inspection.

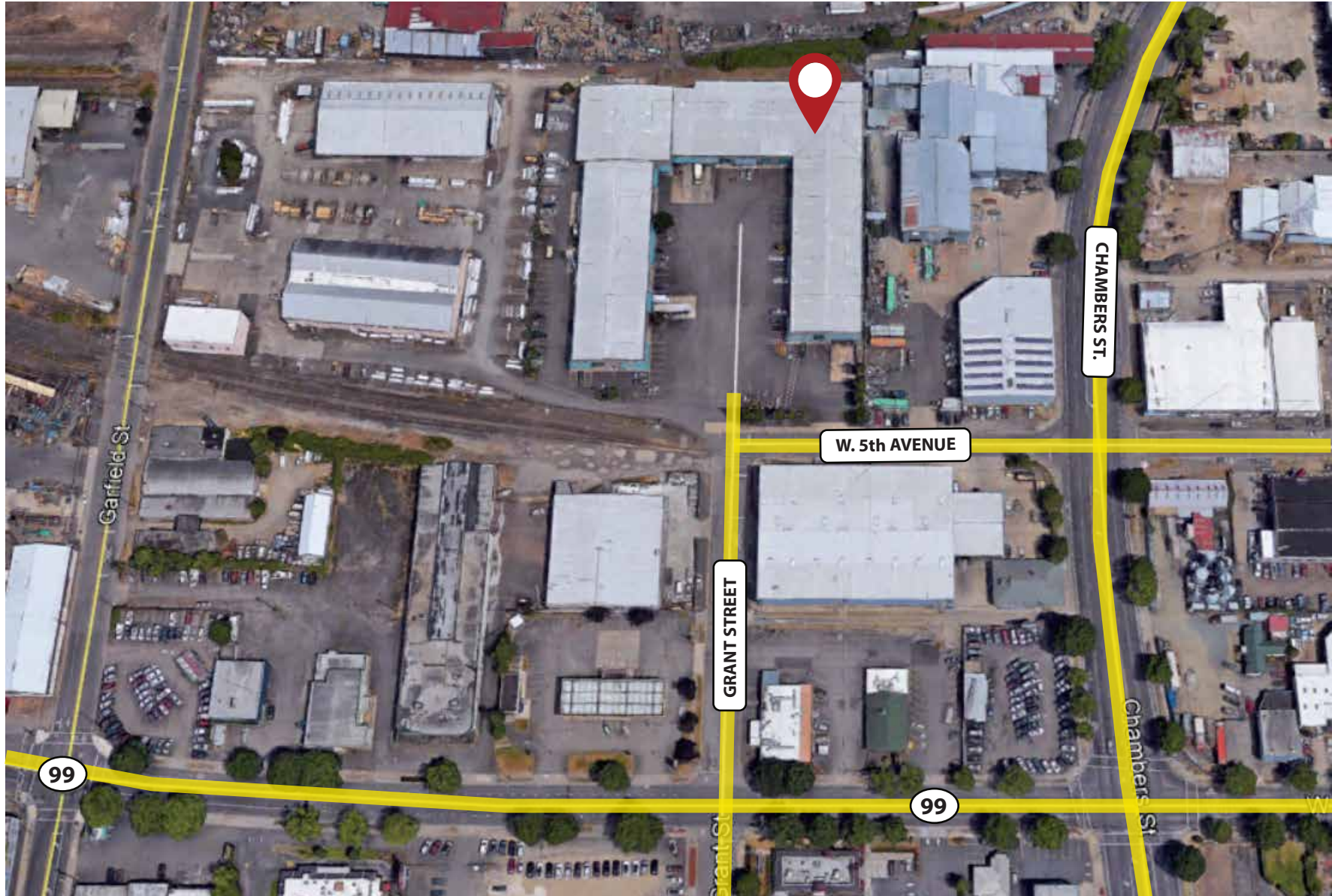
# BUILDING PHOTOS

---



The information in this package was obtained from sources deemed reliable, and is not guaranteed by agent. Package is subject to change, error or omission, prior sale or lease, correction or withdrawal. Any party contemplating purchase is urged to conduct their own independent study and inspection.

# PROPERTY LOCATION



The information in this package was obtained from sources deemed reliable, and is not guaranteed by agent. Package is subject to change, error or omission, prior sale or lease, correction or withdrawal. Any party contemplating purchase is urged to conduct their own independent study and inspection.