



3795 TAMIAMI TRAIL

FOR SALE • FREE-STANDING RETAIL LOCATION
3795 TAMIAMI TRAIL • PORT CHARLOTTE, FL 33952



CONTACT US:

TY HENSLEY
Senior Advisor
239.334.3040 ext. 208
ty.hensley@trinitycre.com

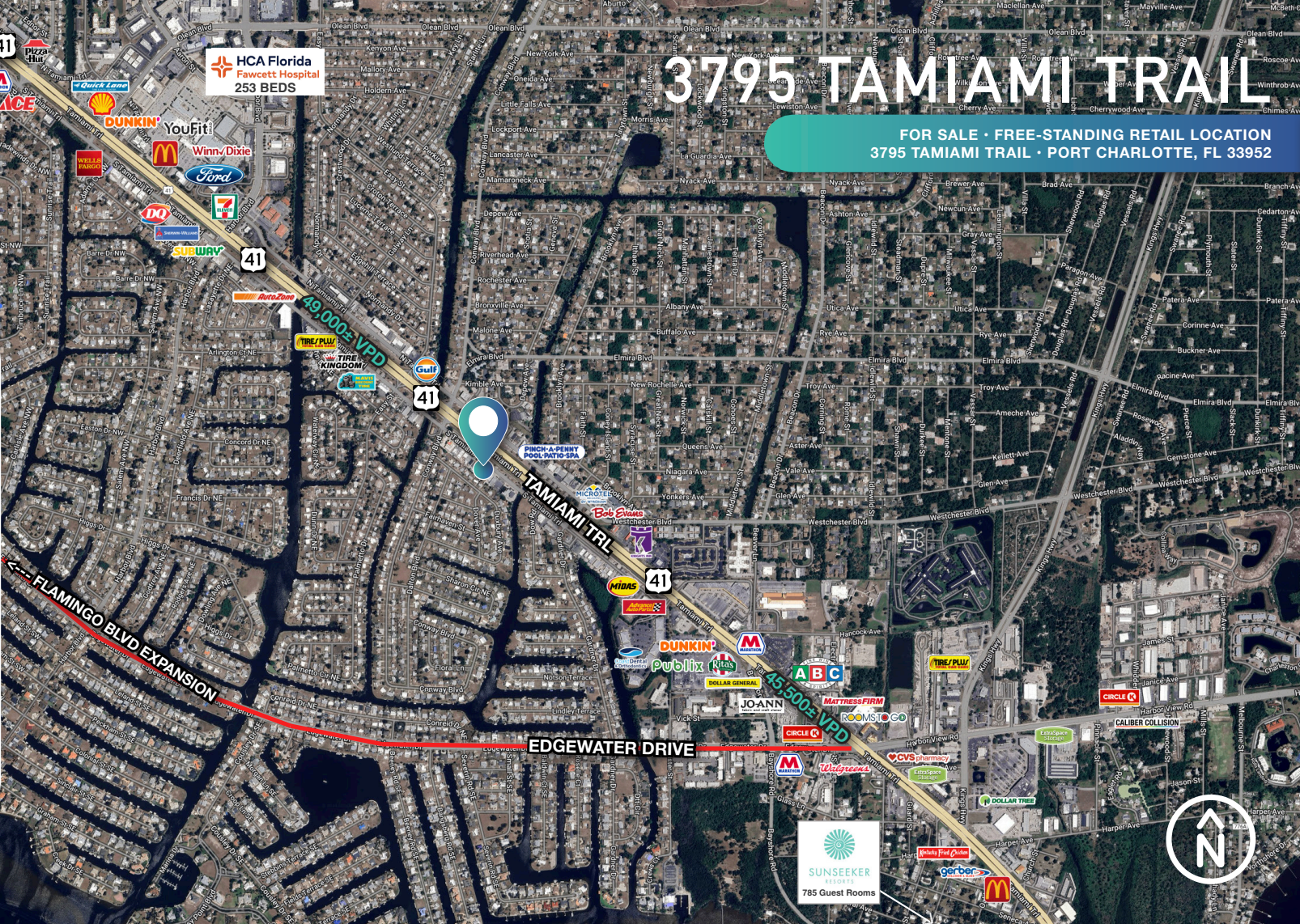
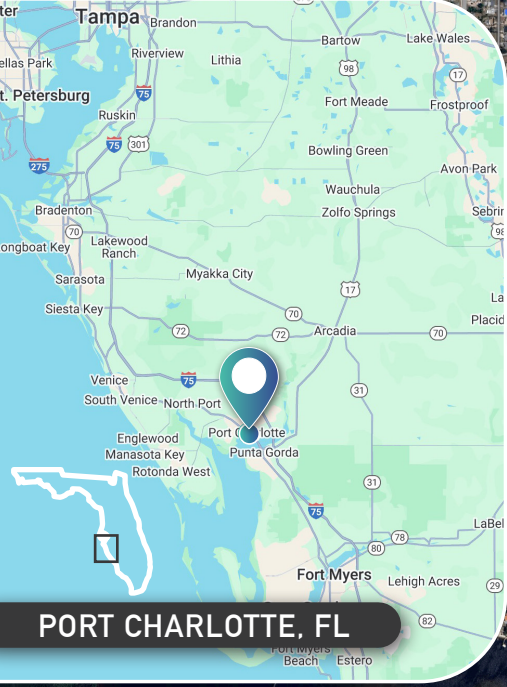
ERIC STROM
Partner
239.334.3040 ext. 208
eric.strom@trinitycre.com

TRINITY FIELDS
Transaction Coordinator
239.334.3040 ext. 208
trinity.fields@trinitycre.com



3795 TAMiami TRAIL

FOR SALE · FREE-STANDING RETAIL LOCATION
3795 TAMiami TRAIL · PORT CHARLOTTE, FL 33952



2024 DEMOGRAPHICS

3795 TAMiami TRAIL

	1 MILE	3 MILE	5 MILE
AVERAGE H.H INCOME	\$85,731	\$83,648	\$95,657
POPULATION	8,340	41,968	95,408
EMPLOYMENT DENSITY	3,533	14,769	38,587

PROPERTY FEATURES

PRICE	\$900,000
BUILDING	5,075 ±SF
ACREAGE	0.34
ZONING	General Commercial
LOCATION	Port Charlotte (Charlotte County)



trinitycre.com
9450 Corkscrew Palms Cir • Suite 101 • Estero, FL 33928
© 2024 Trinity Commercial Group
This information is considered accurate, but not guaranteed.



FREE-STANDING RETAIL

FOR SALE • HIGH TRAFFIC FREE-STANDING RETAIL
3795 TAMIAMI TRAIL • PORT CHARLOTTE, FL 33952

ACCESS MAP



MAJOR RETAIL AERIAL



trinitycre.com

9450 Corkscrew Palms Cir • Suite 101 • Estero, FL 33928

© 2024 Trinity Commercial Group

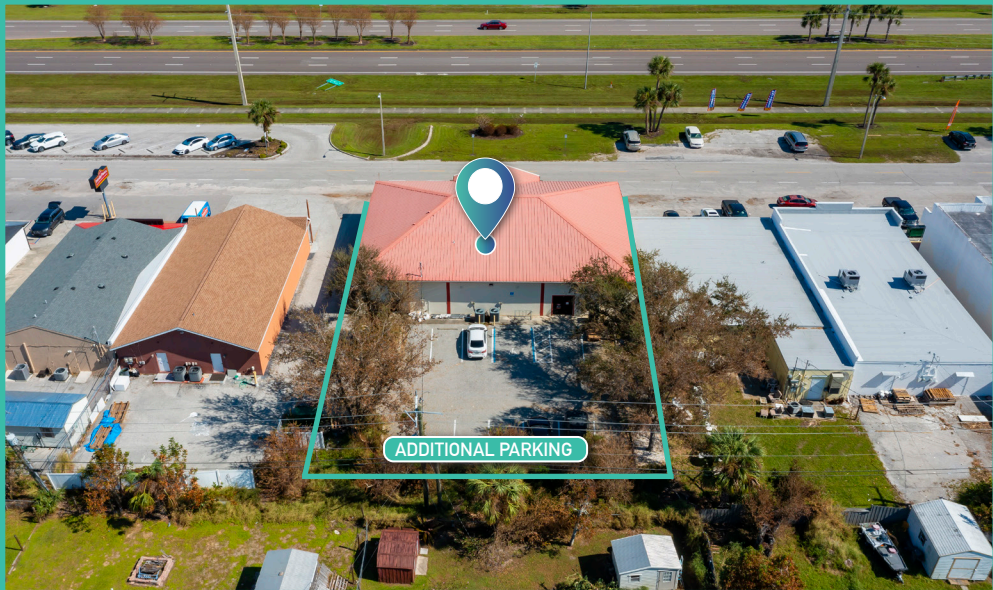
This information is considered accurate, but not guaranteed.



3795 TAMIAMI TRAIL

FOR SALE · FREE-STANDING RETAIL LOCATION
3795 TAMIAMI TRAIL · PORT CHARLOTTE, FL 33952

PHOTOS



trinitycre.com
9450 Corkscrew Palms Cir • Suite 101 • Estero, FL 33928
© 2024 Trinity Commercial Group
This information is considered accurate, but not guaranteed.

