

3634 WEST 11400 SOUTH

MW

FOR GROUND LEASE OR BTS

SITE

PROPERTY DETAILS

3634 W 11400 S, SOUTH JORDAN, UT 84095

- **PRIME PROPERTY! PRIME LOCATION!**
- Raw Land - For Ground Lease or BTS
- .53 Acre Parcel
- Drive-Thru Opportunity
- Located in the main retail corridor of South Jordan on the north side of The District in South Jordan
- Located at a signalized intersection on 11400 South
- High Growth, High Income, and High Traffic Counts!
- Nearby Retailers: Harmon's, Target, Hobby Lobby, JC Penny, McDonald's, Grease Monkey, 7-Eleven, MoBettah's, Jamba Juice, DownEast, LHM Mega Plex Theatres and many others!
- Don't miss out on this great location!
- Contact Agent for more information and pricing!

2024 DEMOS

EST. POPULATION



1 MILE » 16, 928
3 MILE » 113,832
5 MILE » 241,414

EST. HOUSEHOLDS



1 MILE » 5,046
3 MILE » 34,811
5 MILE » 74,282

EST. AVERAGE HH INCOME



1 MILE » \$176,835
3 MILE » \$158,266
5 MILE » \$154,266

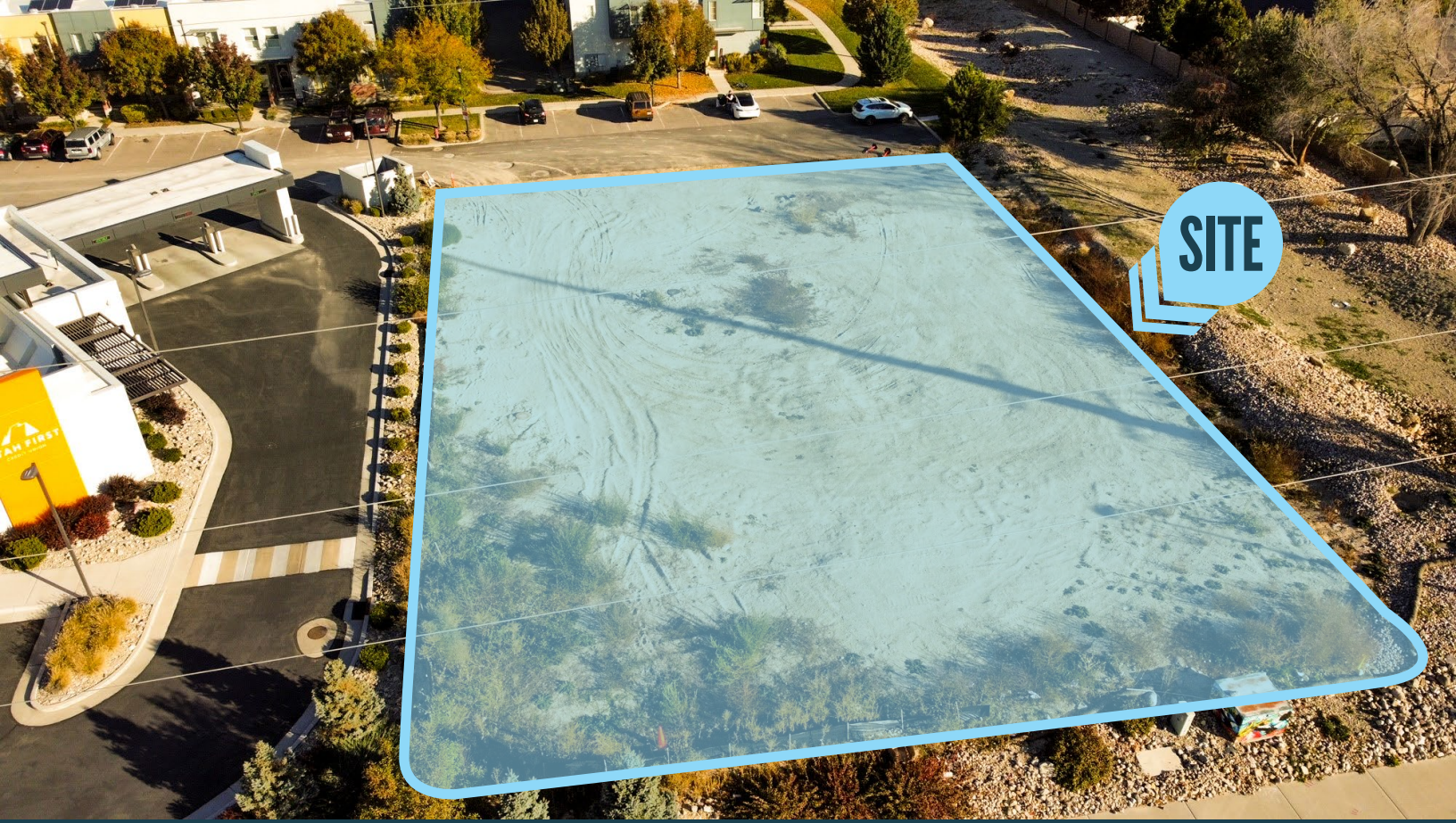


MOUNTAIN WEST
COMMERCIAL REAL ESTATE

ADAM LEWIS

al@mwcre.com
direct 801.746.4708
[View Profile](#)

**FULL SERVICE
COMMERCIAL REAL ESTATE**
312 East South Temple
Salt Lake City, UT 84111
Office 801.456.8800
www.mwcre.com



MOUNTAIN WEST
COMMERCIAL REAL ESTATE

ADAM LEWIS

al@mwcre.com

direct 801.746.4708

[View Profile](#)

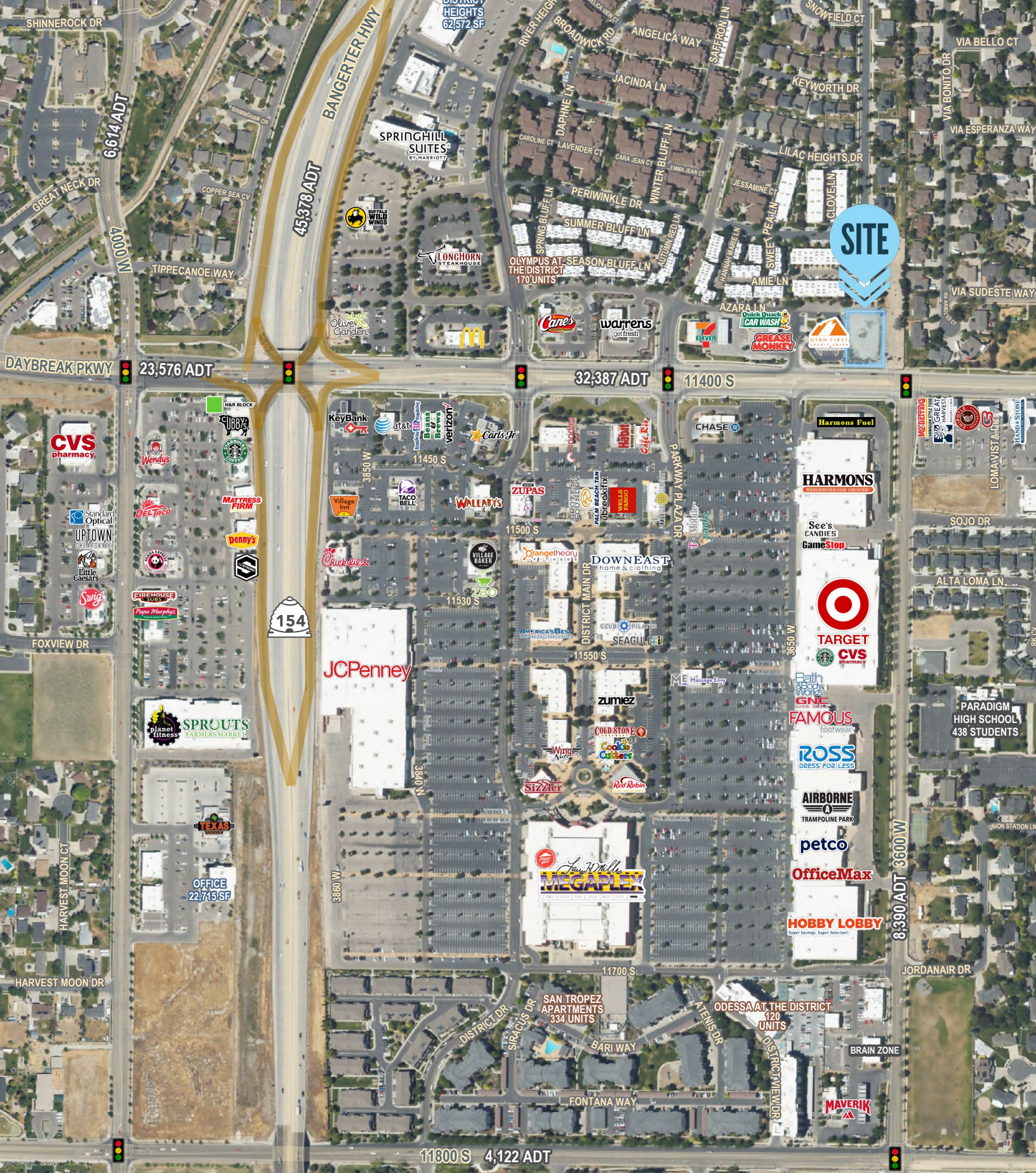
**FULL SERVICE
COMMERCIAL REAL ESTATE**

312 East South Temple

Salt Lake City, UT 84111

Office 801.456.8800

www.mwcre.com



MOUNTAIN WEST
COMMERCIAL REAL ESTATE

ADAM LEWIS

al@mwcre.com
Direct 801.746.4708
[View Profile](#)

**FULL SERVICE
COMMERCIAL REAL ESTATE**
312 East South Temple
Salt Lake City, UT 84111
Office 801.456.8800
www.mwcre.com