

**FOR SALE OR LEASE**

130,151 SF

+ 5 ACRES OF YARD

# TALL FIRS INDUSTRIAL PARK

A Panattoni Development

14621 AND 14719 170TH AVENUE EAST, BONNEY LAKE, WA

 **PANATTONI**



**NAI** Puget Sound  
Properties

**David Douglas, SIOR, CCIM**  
Partner  
+1 253 203 1326  
[ddouglas@nai-psp.com](mailto:ddouglas@nai-psp.com)

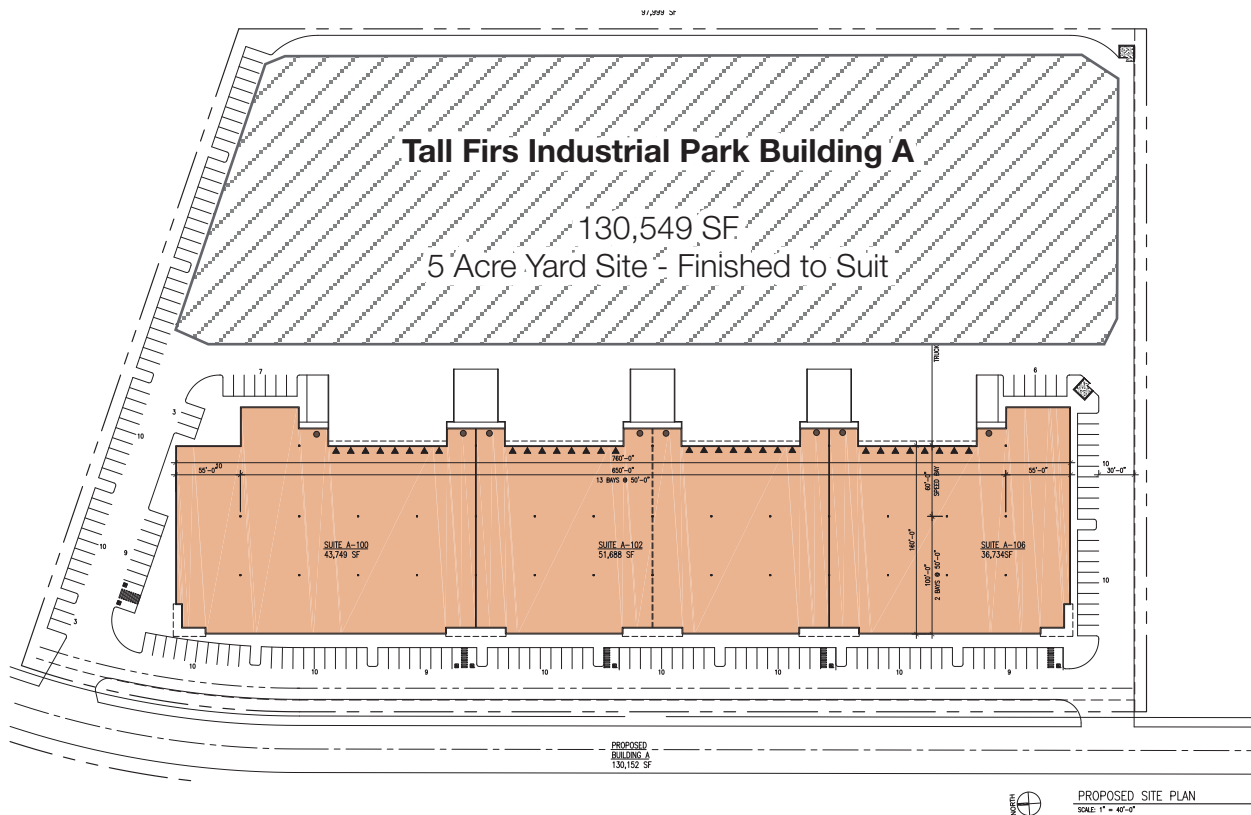
**Kyle Schipper, SIOR**  
Partner  
+1 253 203 1320  
[kschipper@nai-psp.com](mailto:kschipper@nai-psp.com)

**Arie Salomon, SIOR, CCIM**  
Principal  
+1 425 586 5636  
[asalomon@nai-psp.com](mailto:asalomon@nai-psp.com)

**Kent Channing**  
Partner  
+1 425 586 5628  
[kchanning@nai-psp.com](mailto:kchanning@nai-psp.com)







## HIGHLIGHTS



Class A Industrial Project



30' Clear Height  
Dock High & Drive-In Loading



Mileage to major cities:

Sumner - 5.3

Puyallup - 5.6

Port of Tacoma - 15.1

Seattle - 36.4



Available Now



Extension of Tehaleh Boulevard to  
the Orting Highway (SR - 162) by 2026

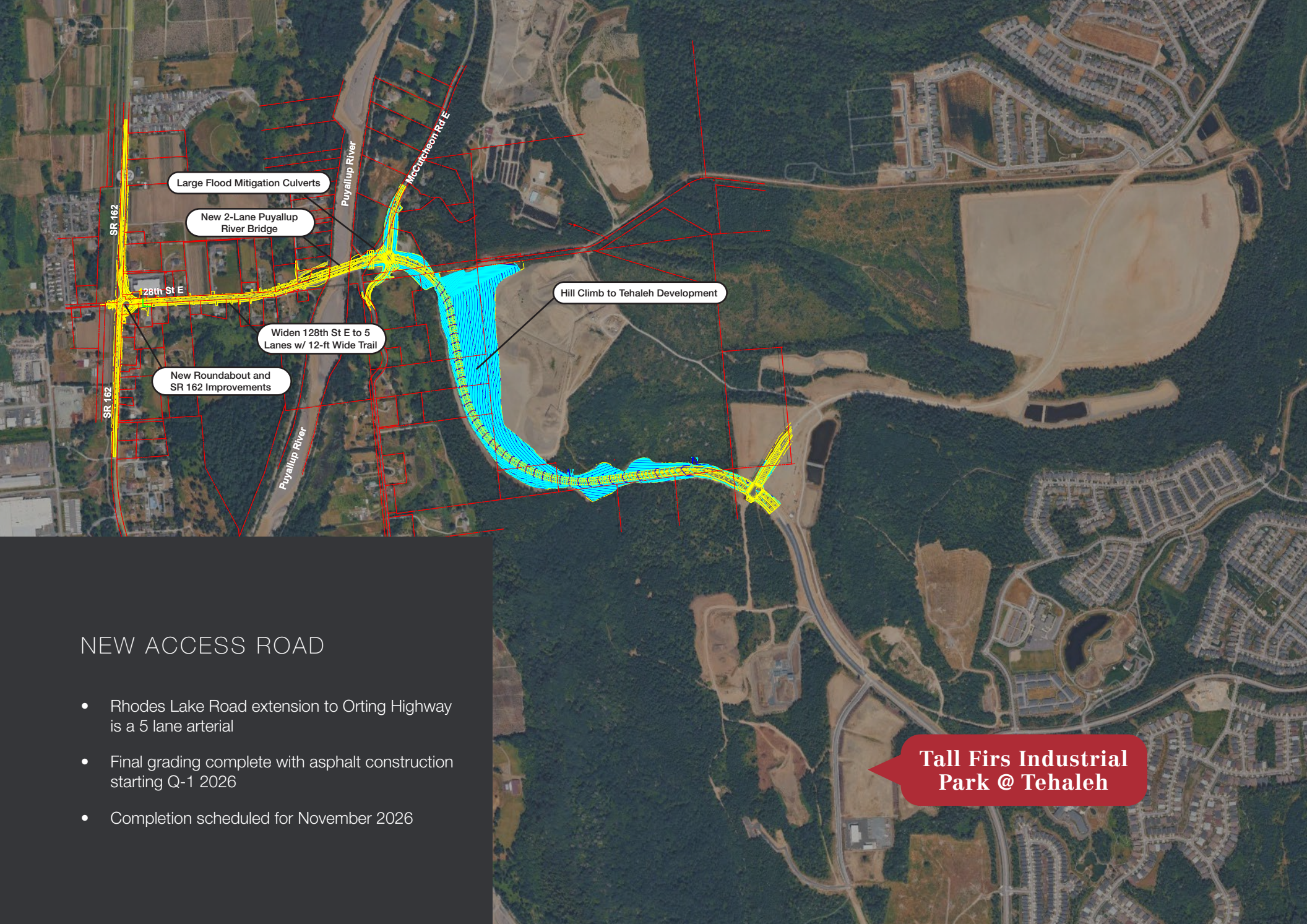


Tall Firs Industrial Park is located in the 4,700  
acre planned community of Tehaleh and  
features local amenities and CC&Rs to protect  
value and enhance your long term investment.









## NEW ACCESS ROAD

- Rhodes Lake Road extension to Orting Highway is a 5 lane arterial
- Final grading complete with asphalt construction starting Q-1 2026
- Completion scheduled for November 2026

**Tall Firs Industrial  
Park @ Tehaleh**