



## ST MICHAELS VILLAGE SHOPPING CENTER 1013 S TALBOT ST, ST MICHAELS, MD

1,300 - 1,950 SF of Retail Space Available



**Mason Popham**

mason.popham@thomas-park.com

410-280-0220

# ST MICHAELS VILLAGE SHOPPING CENTER 1013 S TALBOT ST, ST MICHAELS, MD

1,300 - 1,950 SF of Retail Space Available

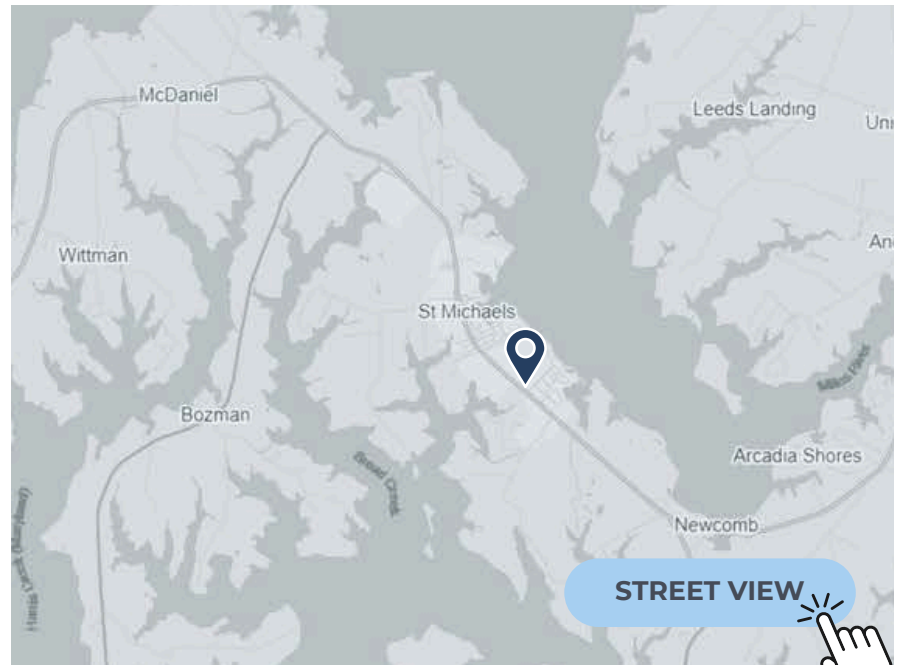
## Property Facts

Building Type	Retail
Building Height	1 Story
Building Size	20,890 SF
Parking	100 Surface Parking Spaces

## Property Overview

St. Michaels Village is the premier retail strip center in St. Michaels, strategically positioned along S. Talbot Street (MD-33), the town's primary commercial corridor and main gateway for both local residents and seasonal visitors. The center offers unmatched retail visibility with prominent signage, direct frontage on the area's most heavily traveled roadway, and convenient surface parking with easy access.

Featuring a strong mix of national, regional, and local retailers, the property benefits from consistent year-round traffic driven by tourism, boating activity, and a loyal local customer base. Located just minutes from Historic Downtown St. Michaels, the harbor, and the Chesapeake Bay, St. Michaels Village represents a rare opportunity to secure space in the town's most visible and established retail location, where retail availability remains extremely limited.



**Mason Popham**

mason.popham@thomas-park.com

410-280-0220

# ST MICHAELS VILLAGE SHOPPING CENTER 1013 S TALBOT ST, ST MICHAELS, MD

1,300 - 1,950 SF of Retail Space Available

 THOMAS PARK COMMERCIAL



**Mason Popham**

mason.popham@thomas-park.com

410-280-0220



## Available Spaces

Space	Size	Term	Rental Rate	Space Use	Condition
Suite 3	1,950 SF	Negotiable	Negotiable	Retail	Full Build-Out
Suite 8	1,300 SF	Negotiable	Negotiable	Retail	Full Build-Out

# ST MICHAELS VILLEAGE SHOPPING CENTER 1013 S TALBOT ST, ST MICHAELS, MD

1,300 - 1,950 SF of Retail Space Available

## Tenant Mix

Suite	Tenant Name
1	Rusticana Pizza
3	VACANT
4	Tidewater Physical Therapy
7	Dragon Express
8	VACANT
9	St. Michael's Nail Salon
10	Second Chance Thrift Store
12	Dream House Studio
13	Route 33 Eye Care
15	Gant & Associates

 **THOMAS PARK COMMERCIAL**



**Mason Popham**

mason.popham@thomas-park.com  
410-280-0220





# ST MICHAELS VILLAGE SHOPPING CENTER 1013 S TALBOT ST, ST MICHAELS, MD

1,300 - 1,950 SF of Retail Space Available



**Mason Popham**  
 mason.popham@thomas-park.com  
 410-280-0220



St Michaels  
Historic District

Inn at Perry Cabin

Miles River

St Michaels  
Elementary/High School

1013 S Talbot St.  
St Michaels, MD.



## ST MICHAELS VILLAGE SHOPPING CENTER 1013 S TALBOT ST, ST MICHAELS, MD

1,300 - 1,950 SF of Retail Space Available

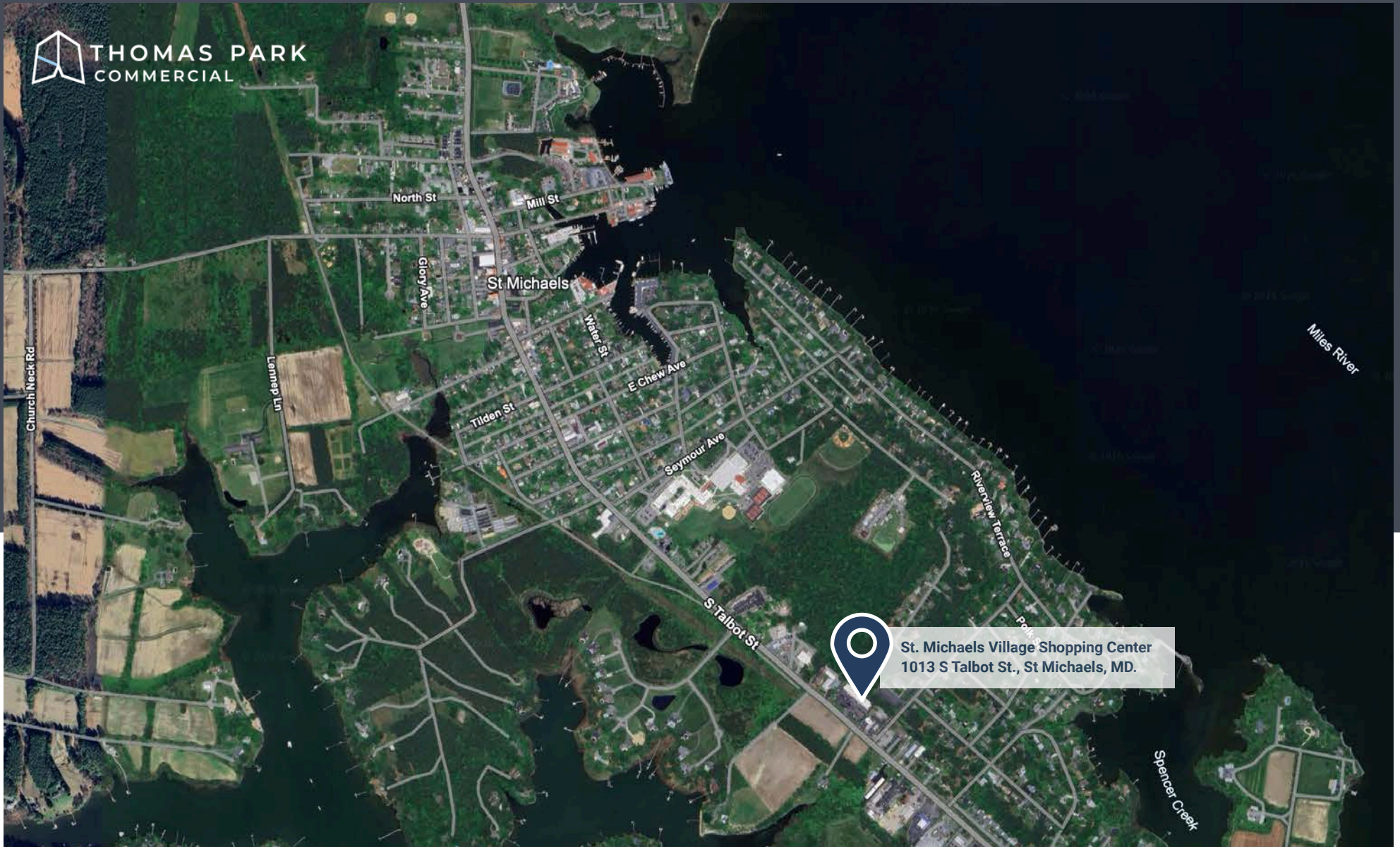


**MASON POPHAM**

[mason.popham@thomas-park.com](mailto:mason.popham@thomas-park.com)

[www.thomas-park.com](http://www.thomas-park.com)

410-280-0220



**ST MICHAELS VILLAGE SHOPPING CENTER  
1013 S TALBOT ST, ST MICHAELS, MD**

1,300 - 1,950 SF of Retail Space Available



**MASON POPHAM**

mason.popham@thomas-park.com

www.thomas-park.com

410-280-0220



**THOMAS PARK COMMERCIAL**

# Your Commercial Real Estate Partner

Full-service commercial real estate solutions driven by  
local expertise, institutional discipline and real-time intelligence.

[www.thomas-park.com](http://www.thomas-park.com)



**Mason Popham**

[mason.popham@thomas-park.com](mailto:mason.popham@thomas-park.com)

410-280-0220

The information contained herein has been obtained from sources believed to be reliable; however, Thomas Park makes no guarantee, warranty, or representation as to its accuracy or completeness. All information is subject to change without notice and should be independently verified. This brochure is for informational purposes only and does not constitute an offer to purchase or lease. Any purchase or lease shall be subject to a fully executed written agreement between the parties.

## FULLY INTEGRATED CRE PLATFORM

---

### Investments

Disciplined healthcare real estate investment with long-term value creation for investors and essential care providers.

### Property Management

Professional, accountable property management with deep expertise built for owners and tenants.

### Property Services

Your go-to team for light construction, repairs, and the projects that keep buildings running.

### Leasing & Brokerage

Leasing, tenant advisory, and market intelligence that advance results for owners and occupiers.

### Interior Design

Interior design and workplace solutions that elevate how people use space.

### Commercial Construction

Interior construction and project delivery with a focus on speed, detail, and discipline.

### Maintenance Intelligence

AI assistance that supports engineers in diagnosing issues and managing work more efficiently.