

CUSHMAN &
WAKEFIELD

FOR LEASE

CALIFORNIA PLAZA

1005

CALIFORNIA AVENUE

BAKERSFIELD, CA 93309



PROPERTY HIGHLIGHTS

- Class A Office Space
- Beautifully Decorated Common Areas
- Ample Parking

AREA AMENITIES

- Centrally Located
- Close to Highway

SPACES AVAILABLE

- Suite 106: ±1,034 RSF
- Suite 115: ±1,426 RSF
- Suite 205: ±2,350 RSF
- Suite 211: ±1,609 RSF
- Suite 212 : ±2,626 RSF
- Suite 219 : ±1,533 RSF
- Suite 221 : ±1,109 RSF
- Suite 230 : ±8,597 RSF
- (Max Contiguous ±9,706 RSF Suites 221 & 230 Combined)
- Asking Rent \$1.80/RSF/MG (Excludes Utilities/Janitorial)



Alex Balfour, SIOR
Executive Director
+1 661 633 3856
alex.balfour@cushwake.com
LIC. 01709847

Susan Moreno
Brokerage Specialist
+1 661 633 3837
susan.moreno@cushwake.com
LIC. 01939777

5060 California Avenue
Suite 1000
Bakersfield, CA 93309
Main +1 661 327 2263
Fax +1 661 633 3801
cushmanwakefield.com



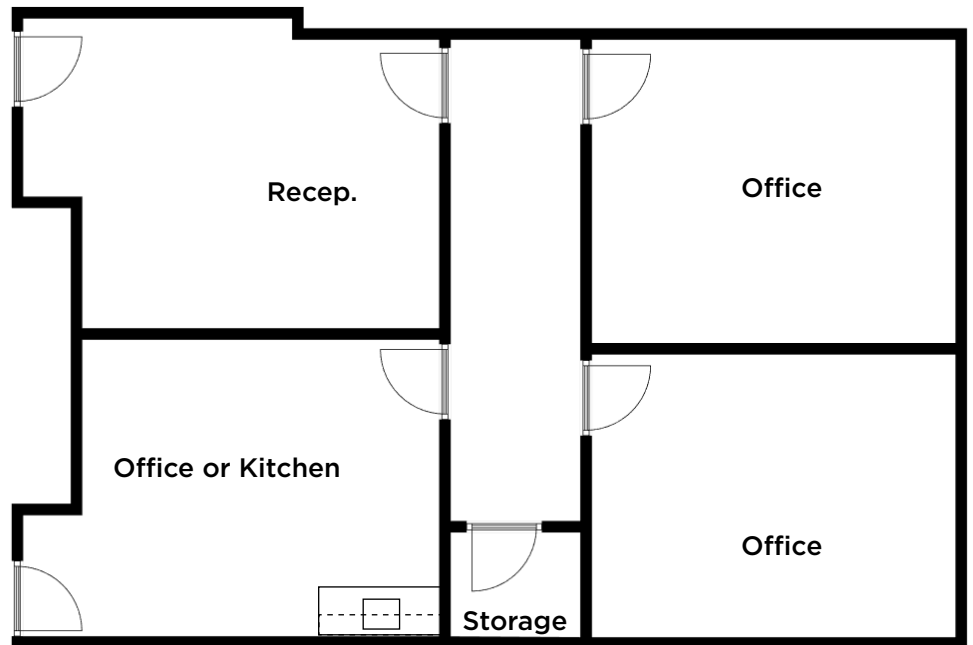
PROPERTY PHOTOS



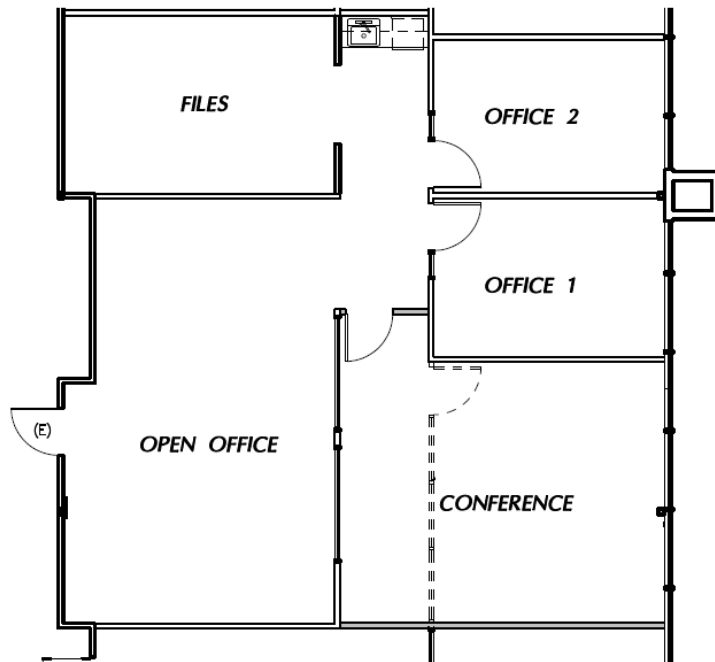
FLOOR PLAN

5001 California Avenue

Suite 106 : ±1,034 RSF



Suite 115 : ±1,426 RSF



Alex Balfour, SIOR
Executive Director
+1 661 633 3856
alex.balfour@cushwake.com
LIC. 01709847

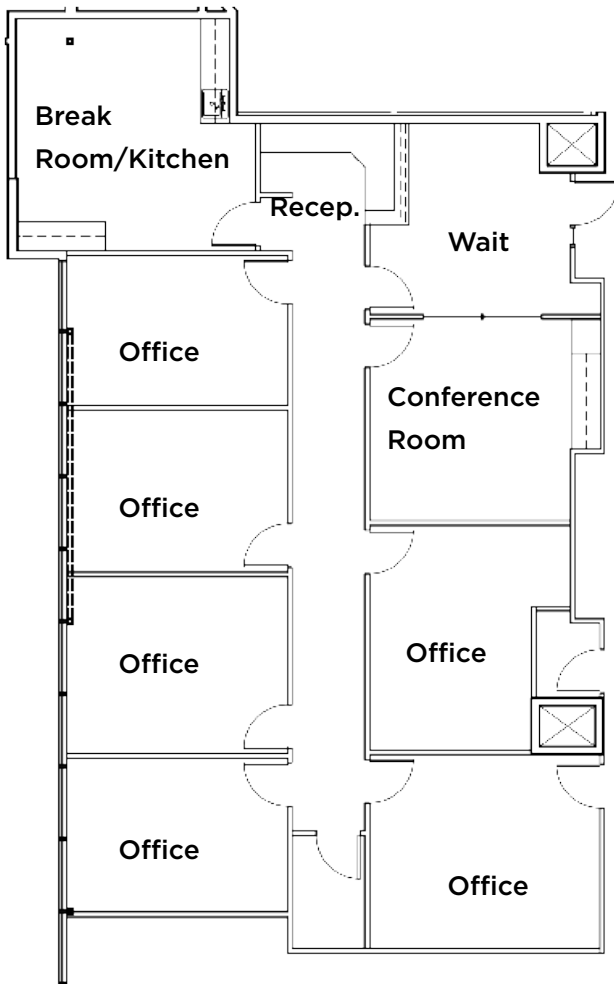
Susan Moreno
Brokerage Specialist
+1 661 633 3837
susan.moreno@cushwake.com
LIC. 01939777

5060 California Avenue
Suite 1000
Bakersfield, CA 93309
Main +1 661 327 2263
Fax +1 661 633 3801
cushmanwakefield.com

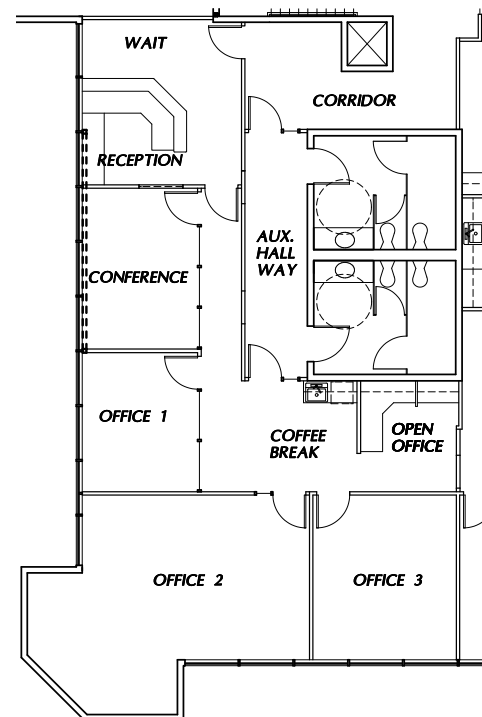
FLOOR PLAN

5001 California Avenue

Suite 205 : ±2,350 RSF



Suite 211 : ±1,609 RSF



Alex Balfour, SIOR
Executive Director
+1 661 633 3856
alex.balfour@cushwake.com
LIC. 01709847

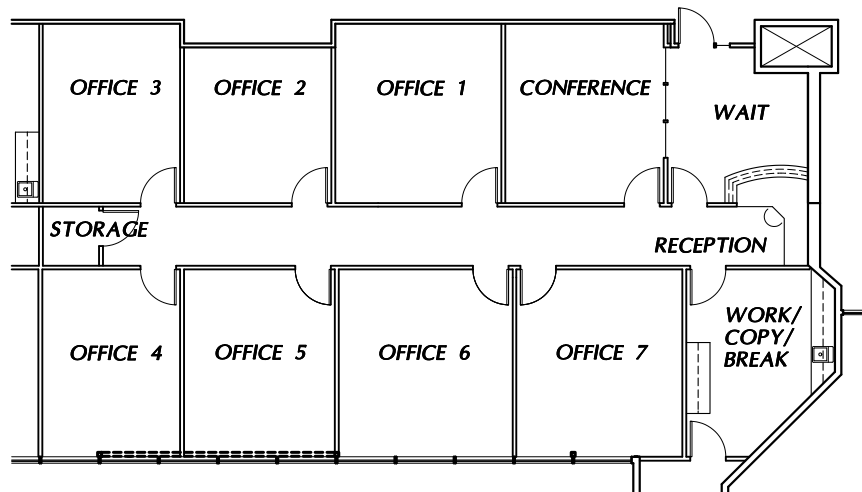
Susan Moreno
Brokerage Specialist
+1 661 633 3837
susan.moreno@cushwake.com
LIC. 01939777

5060 California Avenue
Suite 1000
Bakersfield, CA 93309
Main +1 661 327 2263
Fax +1 661 633 3801
cushmanwakefield.com

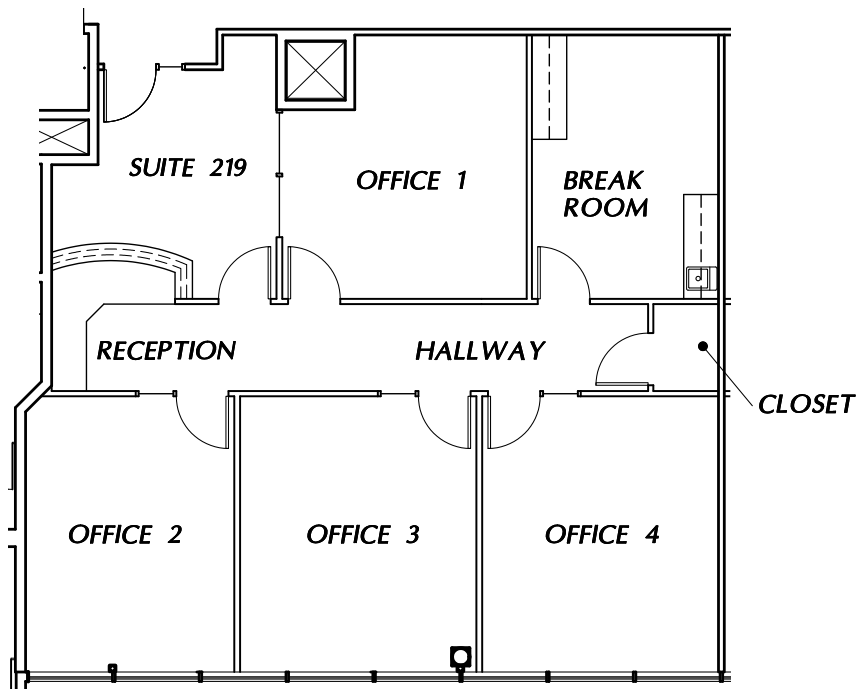
FLOOR PLAN

5001 California Avenue

Suite 212 : ±2,626 RSF



Suite 219 : ±1,533 RSF



Alex Balfour, SIOR
Executive Director
+1 661 633 3856
alex.balfour@cushwake.com
LIC. 01709847

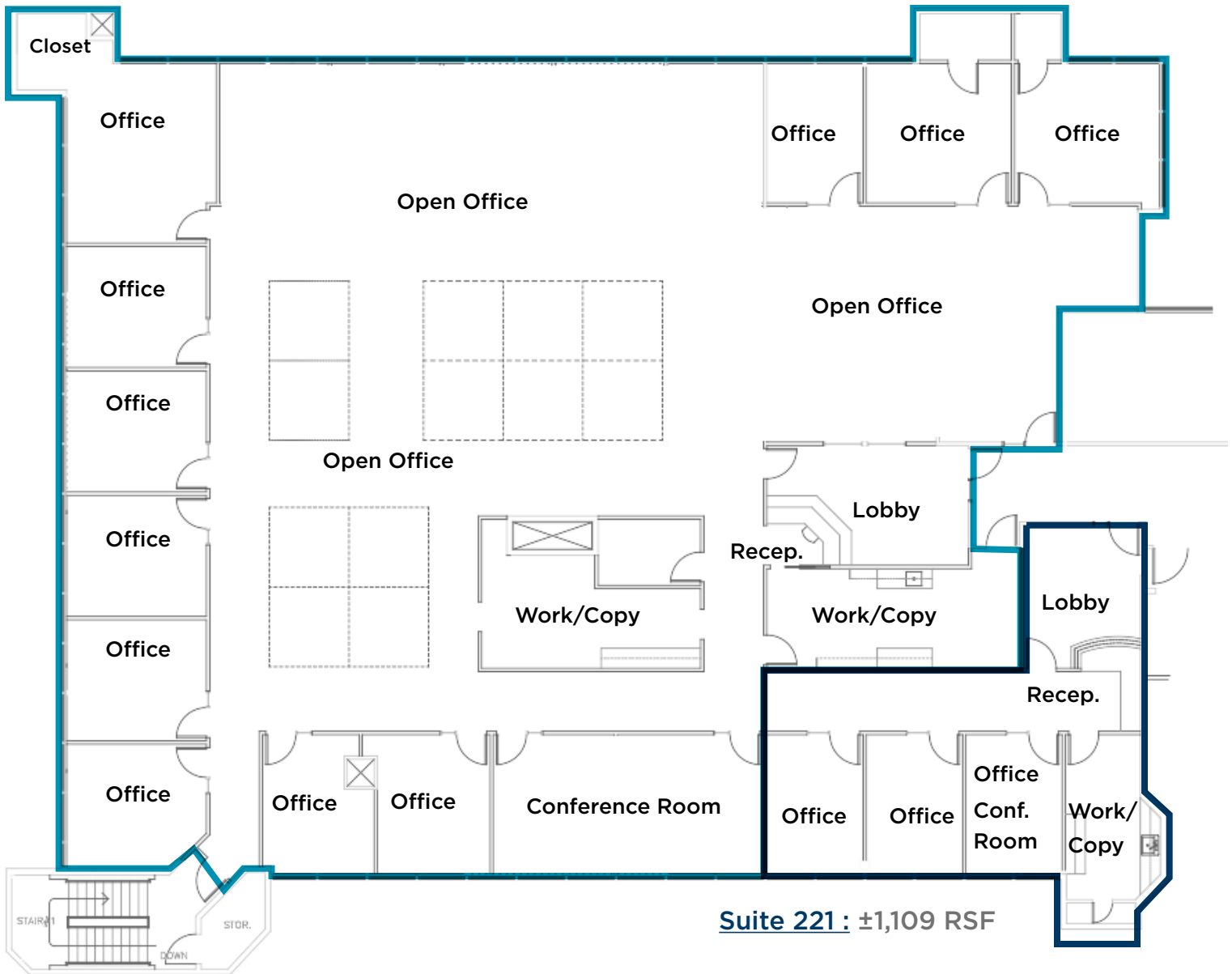
Susan Moreno
Brokerage Specialist
+1 661 633 3837
susan.moreno@cushwake.com
LIC. 01939777

5060 California Avenue
Suite 1000
Bakersfield, CA 93309
Main +1 661 327 2263
Fax +1 661 633 3801
cushmanwakefield.com

FLOOR PLAN

5001 California Avenue

Suite 230 : ±8,597 RSF



• (Max Contiguous ±9,706 RSF Suites 221 & 230 Combined)

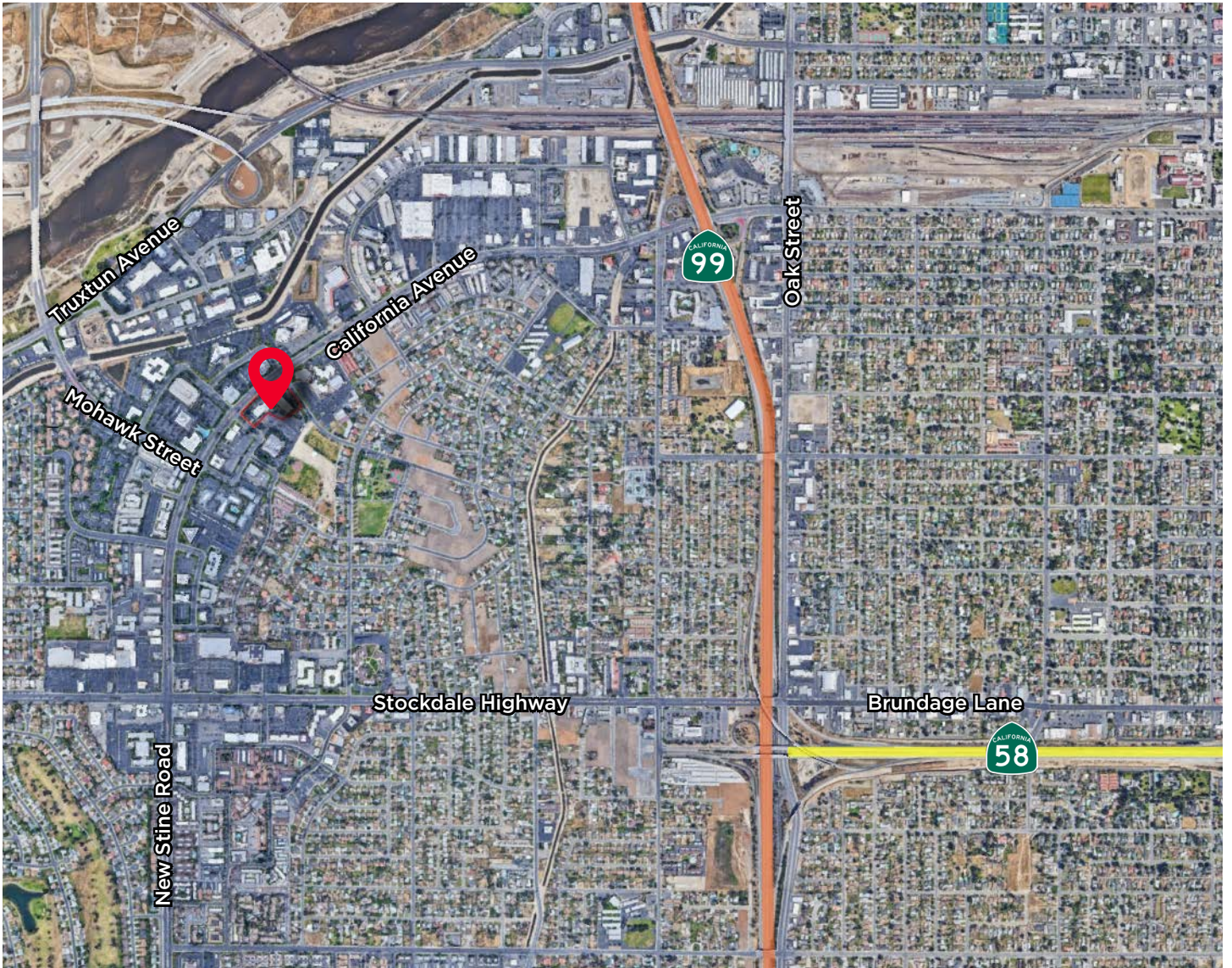


Alex Balfour, SIOR
Executive Director
+1 661 633 3856
alex.balfour@cushwake.com
LIC. 01709847

Susan Moreno
Brokerage Specialist
+1 661 633 3837
susan.moreno@cushwake.com
LIC. 01939777

5060 California Avenue
Suite 1000
Bakersfield, CA 93309
Main +1 661 327 2263
Fax +1 661 633 3801
cushmanwakefield.com

THE LOCATION



Alex Balfour, SIOR
Executive Director
+1 661 633 3856
alex.balfour@cushwake.com
LIC. 01709847

Susan Moreno
Brokerage Specialist
+1 661 633 3837
susan.moreno@cushwake.com
LIC. 01939777

5060 California Avenue
Suite 1000
Bakersfield, CA 93309
Main +1 661 327 2263
Fax +1 661 633 3801
cushmanwakefield.com



THE BALFOUR
— TEAM —

Alex Balfour, SIOR

Executive Director
+1 661 633 3856
alex.balfour@cushwake.com
LIC. 01709847

Susan Moreno

Brokerage Specialist
+1 661 633 3837
susan.moreno@cushwake.com
LIC. 01939777

5060 California Avenue
Suite 1000
Bakersfield, CA 93309
Main +1 661 327 2263
Fax +1 661 633 3801
cushmanwakefield.com



**CUSHMAN &
WAKEFIELD**