

21580 Stevens Creek Blvd.

Cupertino, CA 95014

For Lease



**COLDWELL BANKER
COMMERCIAL
REALTY**



Property Overview

Prominent Cupertino location at the corner of Bubb Rd. & Stevens Creek Blvd. Recently renovated common areas. Ample parking with 49 shared parking spaces. Diverse tenant mix makes this building suitable for a variety of businesses. Contact agent with questions or to tour.

Details

Available ~ 1118 sqft. in suite #204 ~ 1000 sqft in suite #206
Rentable SF: ~ 760 sqft. in suite #205

Asking Price: \$3.75 sqft/month full service

Features: Suite #204 - located upstairs, available now
Suite #205 - located upstairs, available now
Suite #206 - located upstairs, large main room w/ 3 smaller rooms & a storage room, available now
Suite #210 - located upstairs, ideal for single/dual user, available in ~30 days

FOR MORE DETAILS CONTACT:

Huei-Saint Shwe | huei-saint.shwe@cbcrrt.com | CalBRE: 01397036
Coldwell Banker Commercial NRT
CBCWorldwide.com
19330 Stevens Creek Blvd Cupertino, CA 95014

C: 408.857.2541 F: 408.252.0538 O: 408.252.1133

©2023 Coldwell Banker. All Rights Reserved. Coldwell Banker and the Coldwell Banker logo are trademarks of Coldwell Banker Real Estate LLC. The Coldwell Banker® System is comprised of company owned offices which are owned by a subsidiary of Anywhere Advisors LLC and franchised offices which are independently owned and operated. The Coldwell Banker System fully supports the principles of the Fair Housing Act and the Equal Opportunity Act. CalRE #01908304

21580 Stevens Creek Blvd.

Cupertino, CA 95014

For Lease



**COLDWELL BANKER
COMMERCIAL
REALTY**



PROPERTY IS LOCATED HERE:

Close Proximity to :

Whole Foods Market.....0.8 Miles	Deep Cliff Gold Course..... 1.6 Miles	Apple Park (Campus 2).....4.7 Miles	San Jose Airport.....12.2 Miles
Monta Vista High.....0.9 Miles	Main St. Cupertino.....2.4 Miles	Valley Fair/Santana Row.....7.6 Miles	Meta (Facebook).....14.1 Miles
Target Shopping Center.....1.0 Miles	Apple Infinite Loop..... 2.9 Miles	Google.....7.9 Miles	*All Approx. Distances

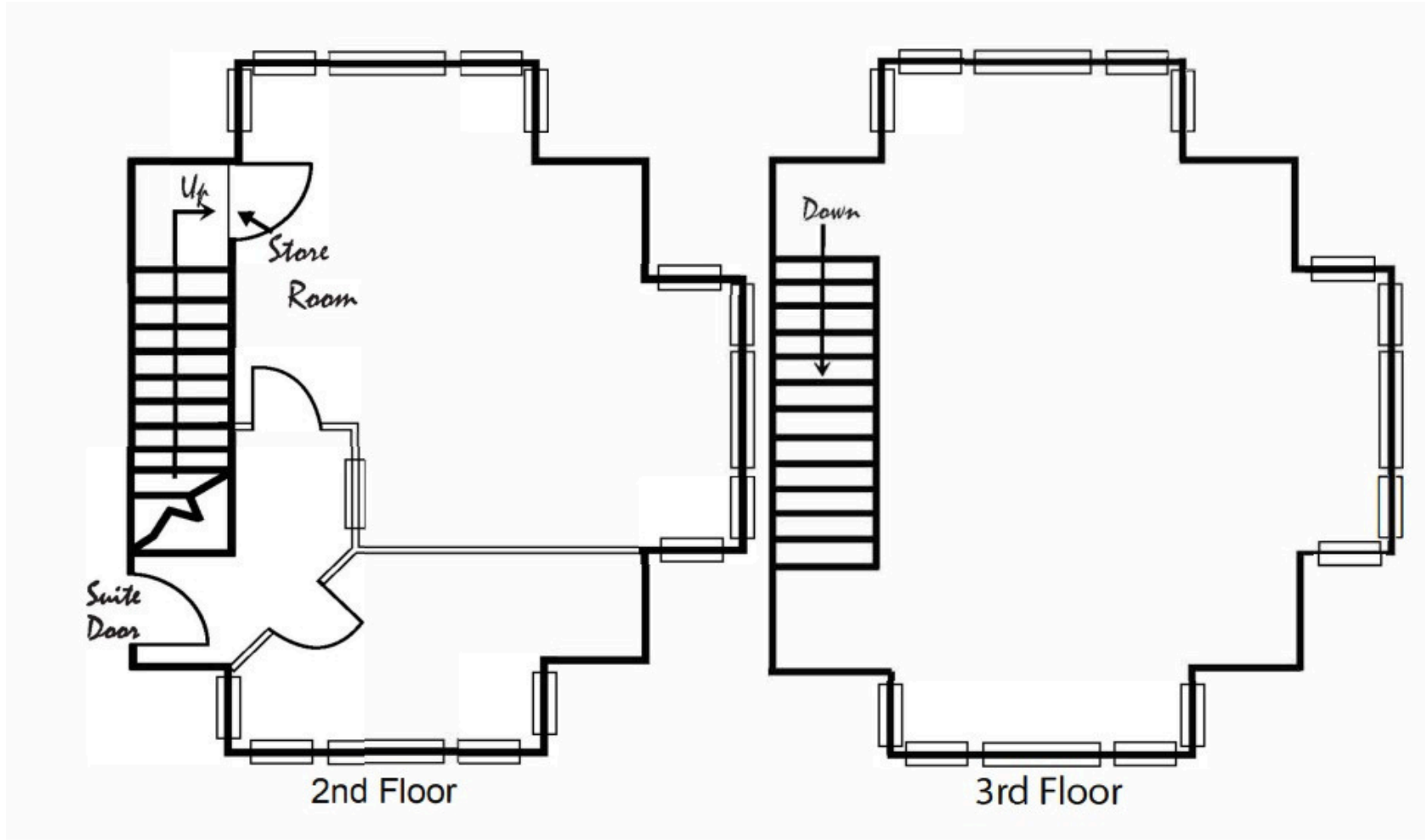
21580 Stevens Creek Blvd.

Cupertino, CA 95014

For Lease



**COLDWELL BANKER
COMMERCIAL
REALTY**



Suite #204
~1118 rentable sqft

*Not drawn to scale

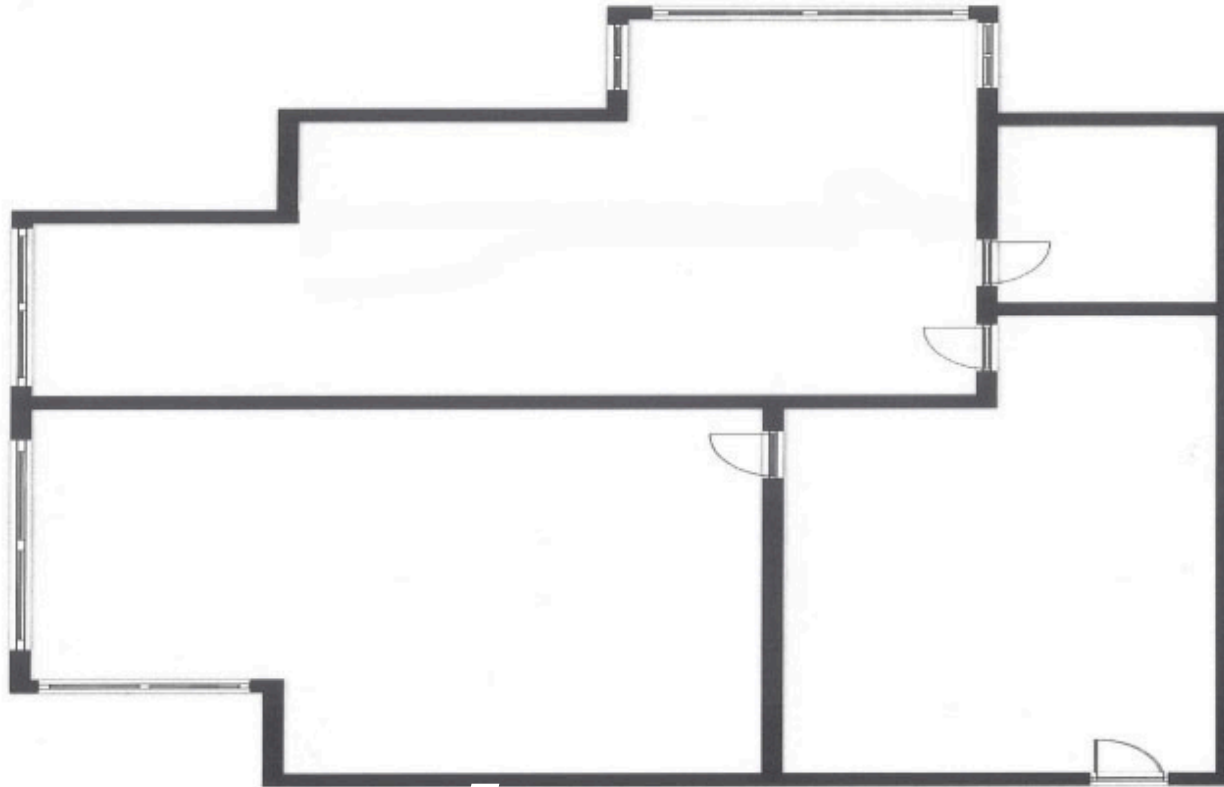
21580 Stevens Creek Blvd.

Cupertino, CA 95014

For Lease



**COLDWELL BANKER
COMMERCIAL
REALTY**



Suite #205
~760 rentable sqft

*Not drawn to scale