

7559-7561 HIGHLAND ROAD  
WATERFORD, MICHIGAN

OFFICE FOR SALE  
2,300 Square Feet Available

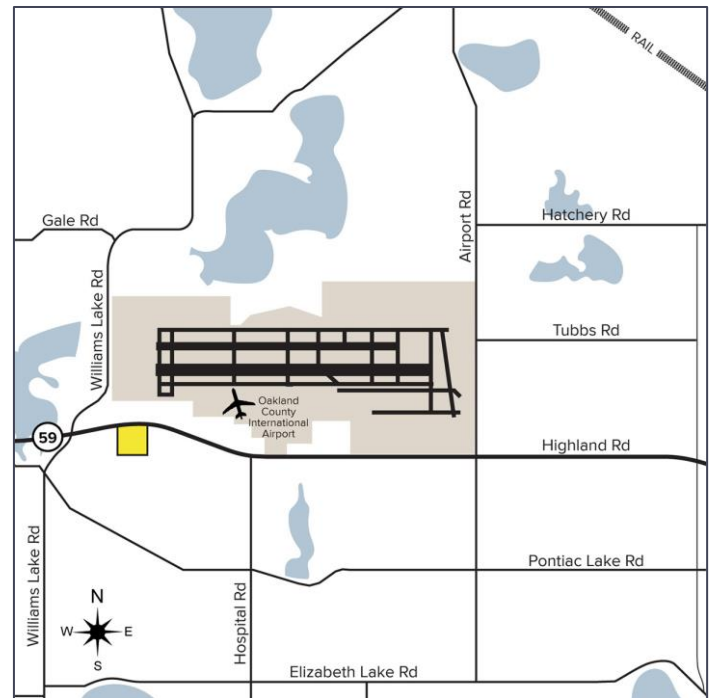


**SIGNATURE  
ASSOCIATES**  
KNOW SIGNATURE | KNOW RESULTS



## PROPERTY FEATURES

- 2,300 square foot freestanding medical/office building
- 12 parking spaces
- Located along highly traveled M-59 (Highland Road)
- Built in 1960
- One mile from Oakland International Airport, surrounded by many local restaurants, retailers, and marinas
- Sale Price: Contact Brokers



For more information, please contact:

**JEFF LEMANSKI**  
(248) 359 0641  
jlemanski@signatureassociates.com

**MARVIN PETROUS**  
(248) 359 0647  
mpetrous@signatureassociates.com

**SIGNATURE ASSOCIATES**  
One Towne Square, Suite 1200  
Southfield, MI 48076  
www.signatureassociates.com

# 7559-7561 Highland Road – Waterford, Michigan

Office For Sale

2,300  
Square Feet  
AVAILABLE

Aerial



For more information, please contact:

**JEFF LEMANSKI**

(248) 359 0641

[jlemanski@signatureassociates.com](mailto:jlemanski@signatureassociates.com)

**MARVIN PETROUS**

(248) 359 0647

[mpetrous@signatureassociates.com](mailto:mpetrous@signatureassociates.com)

**SIGNATURE ASSOCIATES**

One Towne Square, Suite 1200

Southfield, MI 48076

[www.signatureassociates.com](http://www.signatureassociates.com)