

# FOR SUBLEASE: 52,445 SF INDUSTRIAL



**2441 E BRISTOL RD,**  
**BURTON, MI 48529**

**JASON SOUSA**

Commercial Real Estate Agent and Business Broker  
248 821 4889  
JSousa@GLBAInc.com



2441 E Bristol Rd, Burton, MI 48529

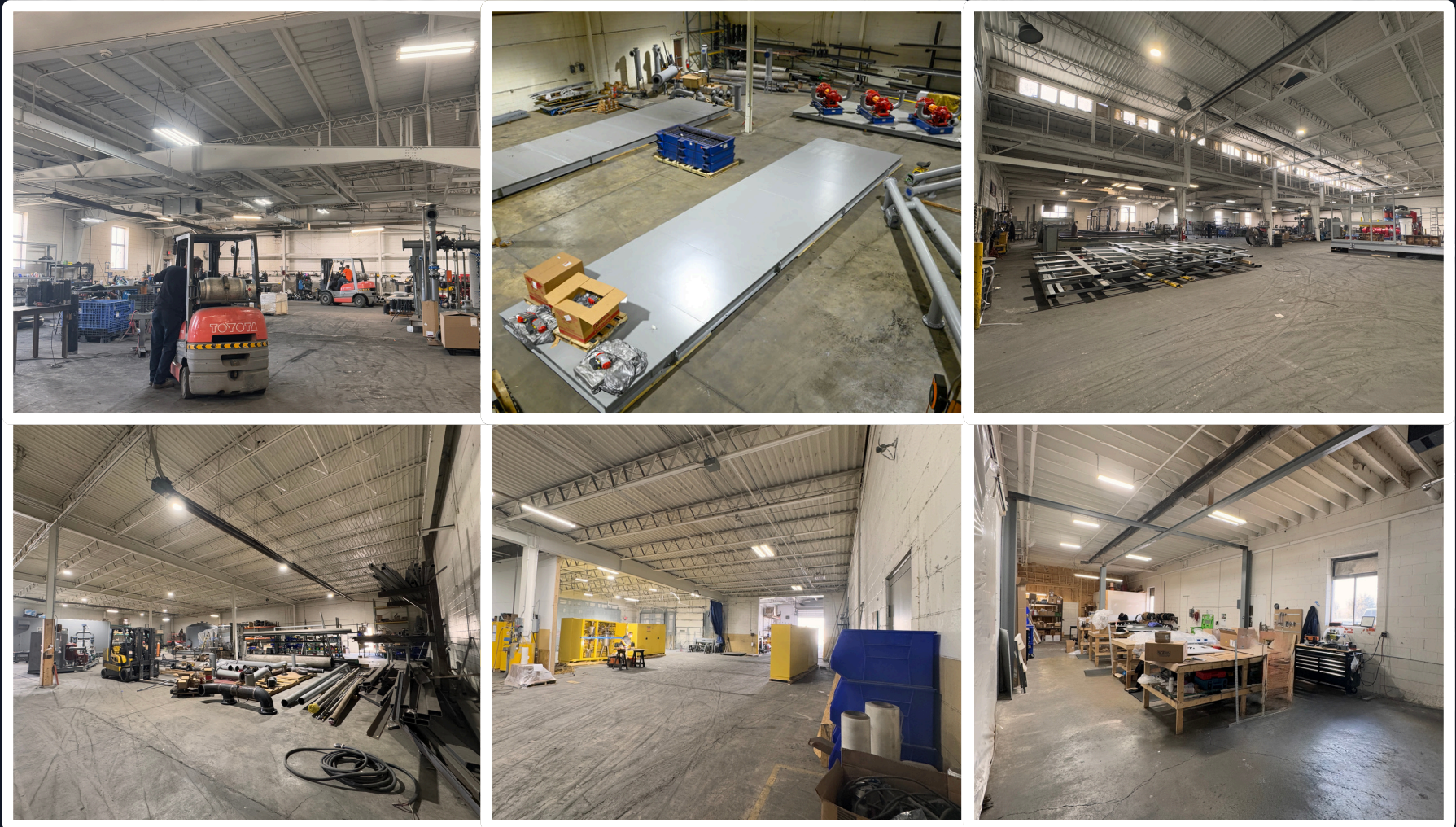


## PROPERTY FEATURES:

- Available January, 2025
- 52,445 sf available
- 14'-21' clear height
- 4,000 sf office space on two levels
- New LED lighting
- Bus duct
- 4 Grade level doors
- 2 Truck wells
- Zoned M-2 General Industrial
- 600 Amps 480/3
- Easy freeway access
- 4 miles from Flint Bishop International Airport
- Lease \$5.25/sf NNN



2441 E Bristol Rd, Burton, MI 48529





2441 E Bristol Rd, Burton, MI 48529







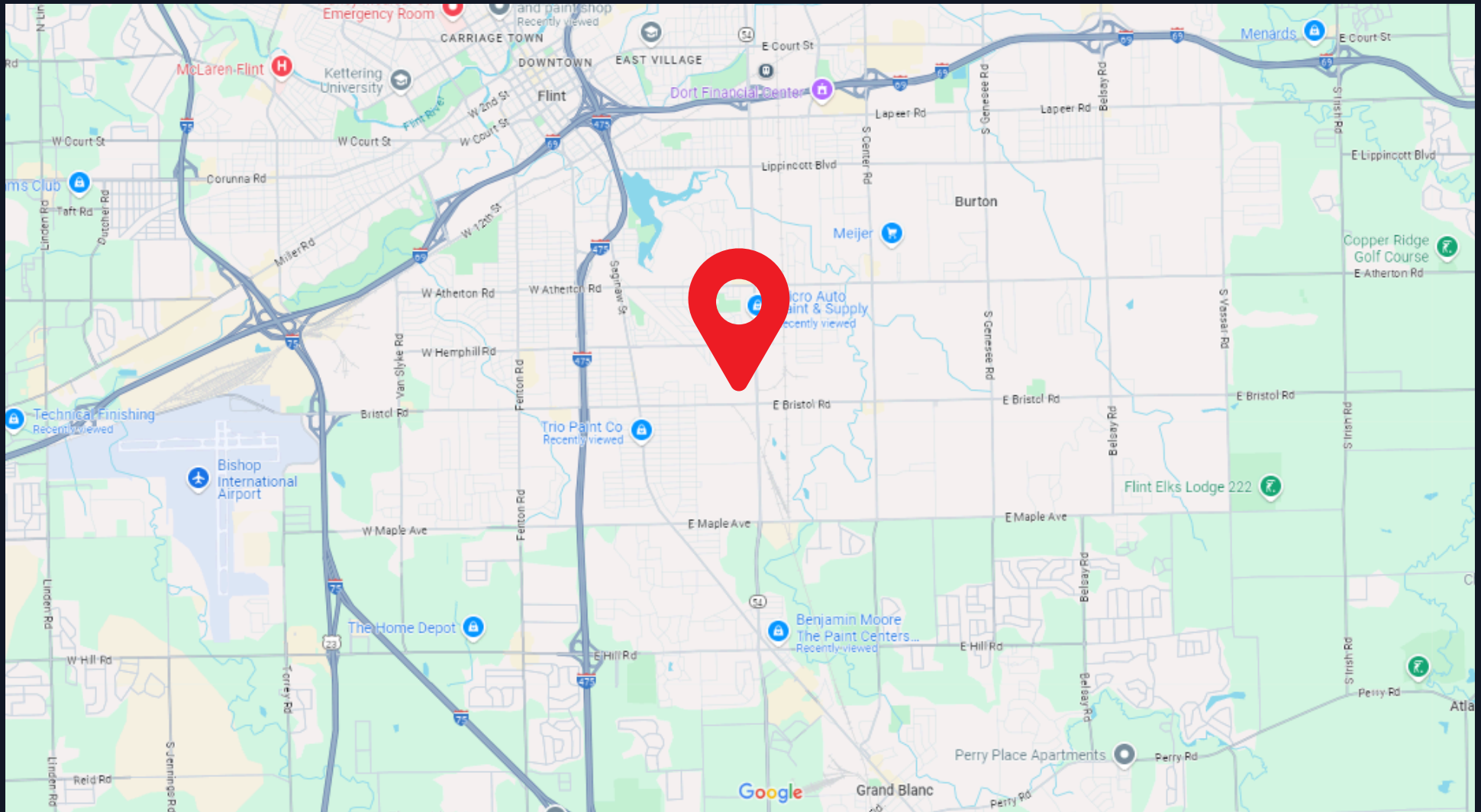


2441 E Bristol Rd, Burton, MI 48529





# 2441 E Bristol Rd, Burton, MI 48529





**2441 E BRISTOL RD,**  
BURTON, MI 48529

**JASON SOUSA**

Commercial Real Estate Agent  
and Business Broker

248-821-4889

[JSousa@GLBAInc.com](mailto:JSousa@GLBAInc.com)

**GLBA**  
BUSINESS ADVISORS

**exp**<sup>®</sup>  
COMMERCIAL

