

202 PERRY PARKWAY, UNIT #4

Gaithersburg, MD 20877
Montgomery County

FLEX SPACE | 8,186 SF AVAILABLE



PROPERTY INFORMATION

- Approximately 85% Warehouse with 2 Drive-In loading doors, 1 office, 1 kitchenette/break room, 2 restrooms
- Central HVAC throughout
- Ceiling height is 13' to bottom joist
- 3 Phase 480 V, 600 A
- Secure access
- Existing lab infrastructure includes: Water supply booster, Freezer/Cold Room, Air compressor, Water chiller, Chem. Room, Pit Scale, French Drain.

LEASED BY:

klnb

Lucas Glaeser
301-265-5614
lglaeser@klnb.com

Kenneth Fellows
301-222-0210
kfellows@klnb.com

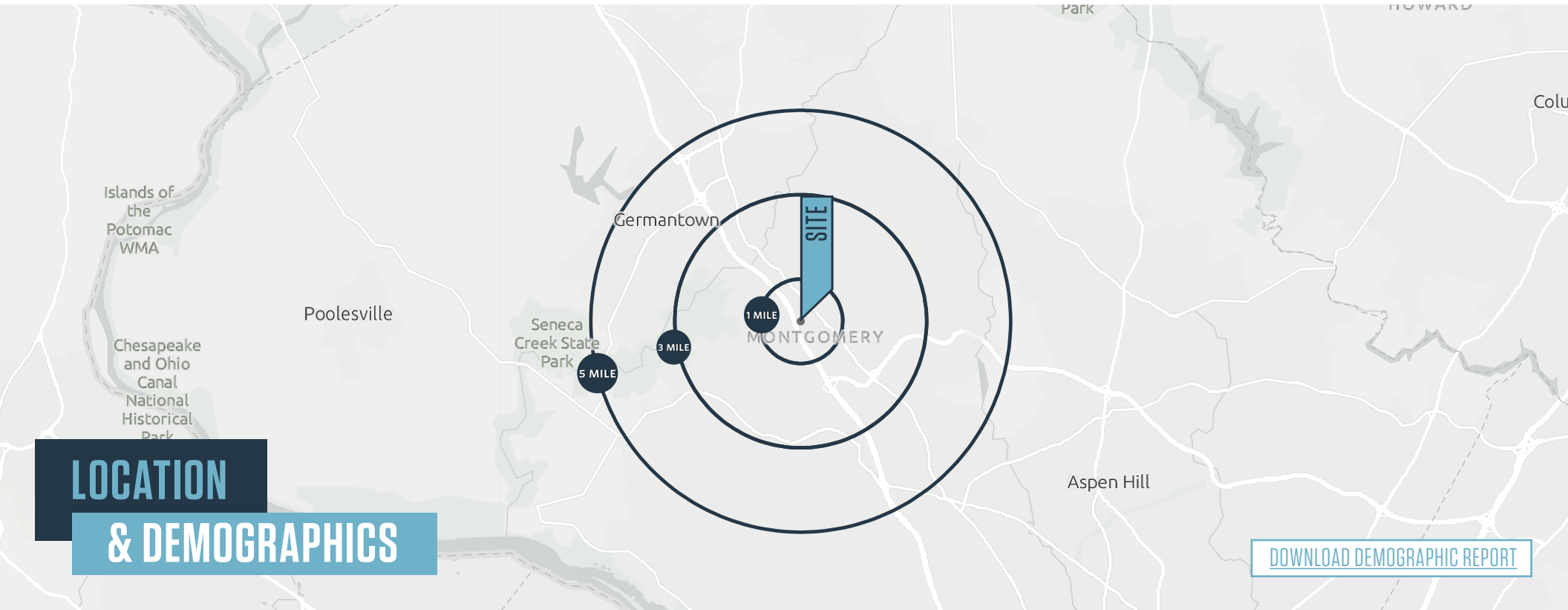
Robert E. Pugh
301-222-0211
rpugh@klnb.com




Keiry Martinez
703-334-5629
kmartinez@klnb.com

12435 Park Potomac Ave, Suite 250
Rockville, MD 20854
klnb.com

202 PERRY PARKWAY, UNIT #4

Gaithersburg, MD 20877
Montgomery County



	1-MILE	3-MILES	5-MILES				
	Population 15,391	141,750	151,616		Households 5,984	50,993	53,510
	Daytime Population 25,353	139,427	141,363		Average Household Income \$103,470	\$147,635	\$173,230

Lucas Glaeser
lglaeser@klnb.com
301-265-5614

Kenneth Fellows
kfellows@klnb.com
301-222-0210

Robert Pugh
rpugh@klnb.com
301-222-0211

Keiry Martinez
kmartinez@klnb.com
703-334-5629

12435 Park Potomac Ave, Suite 250
Rockville MD, 20854
klnb.com

klnb

202 PERRY PARKWAY, UNIT #4

Gaithersburg, MD 20877
Montgomery County

MARKET AERIAL



Lucas Glaeser
lglaeser@klnb.com
301-265-5614

Kenneth Fellows
kfellows@klnb.com
301-222-0210

Robert Pugh
rpugh@klnb.com
301-222-0211

Keiry Martinez
kmartinez@klnb.com
703-334-5629

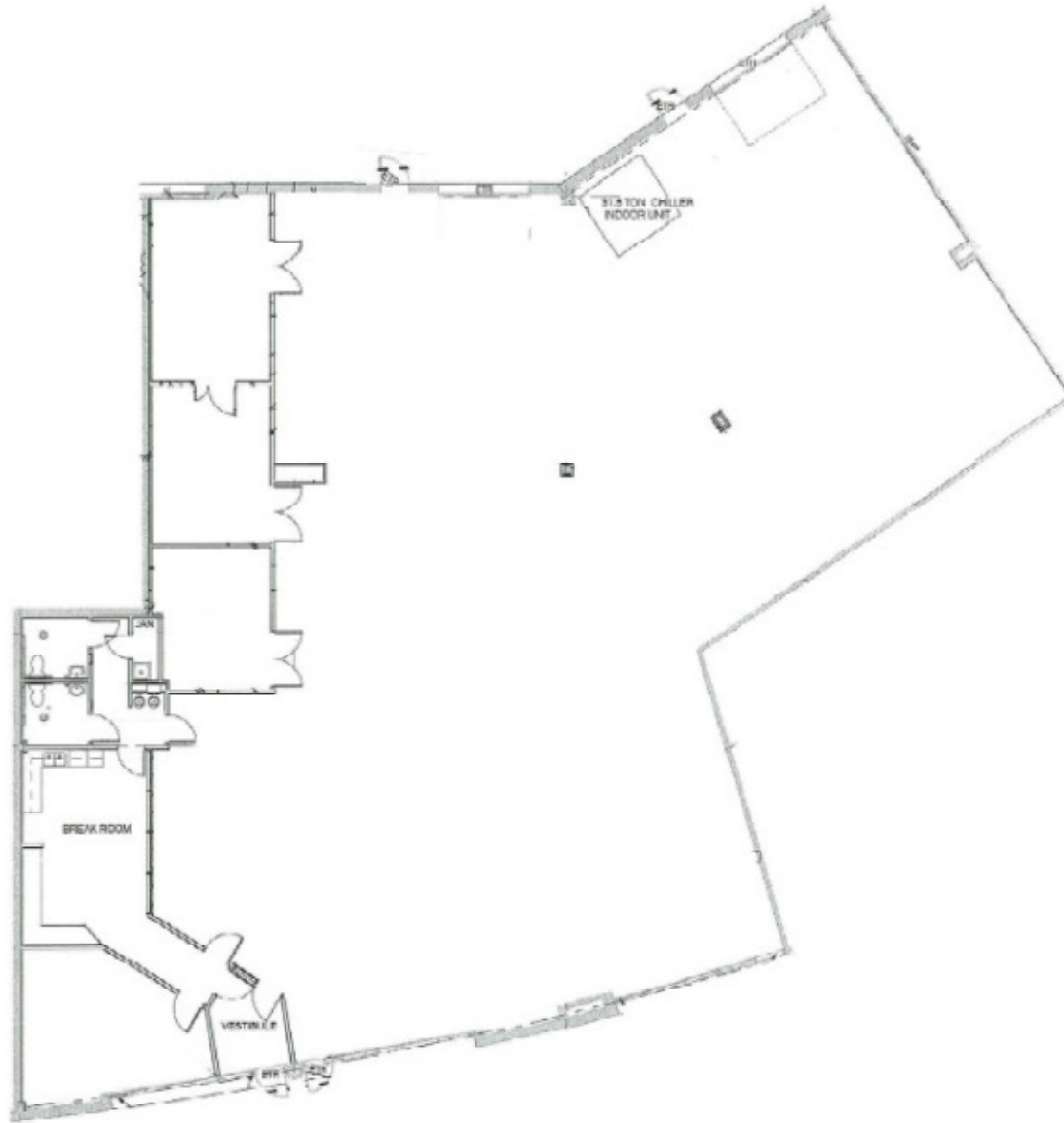
12435 Park Potomac Ave, Suite 250
Rockville MD, 20854
klnb.com

klnb

202 PERRY PARKWAY, UNIT #4

Gaithersburg, MD 20877
Montgomery County

FLOOR PLAN



8,186 SF

Lucas Glaeser
lglaeser@klnb.com
301-265-5614

Kenneth Fellows
kfellows@klnb.com
301-222-0210

Robert Pugh
rpugh@klnb.com
301-222-0211

Keiry Martinez
kmartinez@klnb.com
703-334-5629

12435 Park Potomac Ave, Suite 250
Rockville MD, 20854
klnb.com

klnb

202 PERRY PARKWAY, UNIT #4

Gaithersburg, MD 20877
Montgomery County

PHOTOS



Lucas Glaeser
lglaeser@klnb.com
301-265-5614

Kenneth Fellows
kfellows@klnb.com
301-222-0210

Robert Pugh
rpugh@klnb.com
301-222-0211

Keiry Martinez
kmartinez@klnb.com
703-334-5629

12435 Park Potomac Ave, Suite 250
Rockville MD, 20854
klnb.com

klnb

202 PERRY PKWY, UNIT #4

Gaithersburg, MD 20877

Montgomery County

[CLICK TO VIEW PROPERTY WEBSITE](#)

For More Information, Please Contact:

Lucas Glaesr
lglaeser@klnb.com
301-265-5614

Kenneth Fellows
kfellows@klnb.com
301-222-0210

Robert Pugh
rpugh@klnb.com
301-222-0211

Keiry Martinez
kmartinez@klnb.com
703-334-5629



While we have no reason to doubt the accuracy of any of the information supplied, we cannot, and do not, guarantee its accuracy. All information should be independently verified prior to a purchase or lease of the property. We are not responsible for errors, omissions, misuse, or misinterpretation of information contained herein and make no warranty of any kind, express or implied, with respect to the property or any other matters.

12435 Park Potomac Ave, Suite 250
Rockville MD, 20854
klnb.com

