

# Industrial For Lease



Woodward Commercial Realty, Inc.

4763 Rosebud Lane Newburgh, IN 47630 | 812-474-1900

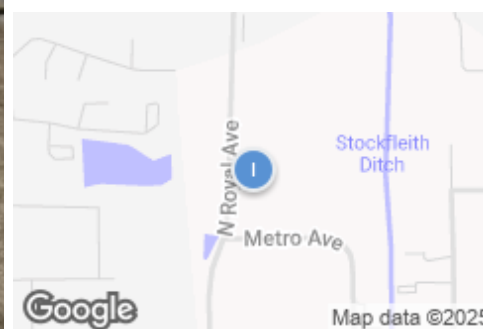
## East-Side Storage Units

747 Royal Ave, Evansville, IN, 47715

Industrial: Self Storage For Lease

Prepared on February 05, 2025

1 of 1 Listings



### Listing Details | Industrial For Lease

Suite	-	Vacant	Yes
Secondary Uses	Specialty	Available Date	2/01/2025
Sublease	-	Days On Market	4 days
Total Available Space	11,000 SF	Date Listed	2/01/2025
Min Div/Max Contig	1000/11,000 SF	Last Modified	2/05/2025
Asking Rate	\$600.00 Monthly	Listing ID	41860671
Lease Type	Other	Ceiling Height	13 ft
Expenses	-	Dock High Doors	-
Lease Terms	12 months	Grade Level Doors	-
Divisible	1000	Parking Spaces	-

### Description

Secure, accessible storage space available now with convenient location and easy access to major roads. Versatile space that can accommodate a variety of storage needs.

- Each unit 20x50
- Zoned C-4
- 12' OH door
- 13' Ceilings
- Owner pays electric

Property Features

Location Details

Address	747 Royal Ave, Evansville, IN, 47715
Zoning	C-4
County	Vanderburgh

Parcels	09-443-14-184-009
Name	747 N. Royal Ave

Building Details

Sub Type	Mini Storage
Building Status	Existing
Building Size	11,000 SF
Land Size	0.77 Acres / 33,715 SF
Number of Buildings	1
Number of Floors	1
Year Built	2024
Primary Constr. Type	Steel

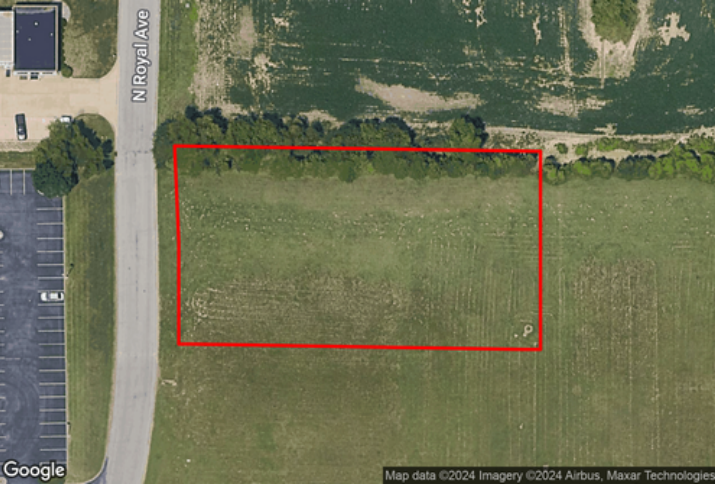
Occupancy Type	Single Tenant
Yard	-
Electricity	Yes
Ceiling Height	13 ft
Dock High Doors	-
Grade Level Doors	-
Sprinklers	-

Property Listings

1 Listing | 11,000 SF | \$600.00 Monthly

Type	Space Use	Suite	Available Space	Rate	Available	Clr Ht	Doors	Office	Yard	Power
For Lease	Industrial	-	1,000 - 11,000 SF	\$600.00 Month Other	2/01/2025	13 ft	-	-	-	- / - / -

Additional Photos



## Contact

---



**Christy Vondersaar**

812-319-4221

[christyv@woodwardrealty.com](mailto:christyv@woodwardrealty.com)



Woodward Commercial Realty, Inc.