

TOK

COMMERCIAL

2265 DESOTO STREET

OFFICE PROPERTY FOR SALE | IDAHO FALLS, ID 83404



Prime medical office building in Idaho Falls' premier hospital corridor, near EIRMC and Mountain View Hospital.

Easy access to I-15 and major arterial roadways.

High-visibility location near regional retail, dining, and major employers.

Ample off-street parking for staff and visitors.

Convenient access for patients, clients, and employees.

Surrounded by established medical and professional office users.

SUBMARKET: South Idaho Falls

PROPERTY TYPE: Office

BUILDING SIZE: 3,089 SF

LOT SIZE: 0.40 Acres

SALE PRICE: \$915,000

ZONING: PB, Professional Business

CONTACT

BRIAN WILSON, SIOR, CCIM

208.656.2271

brian@tokcommercial.com

BRENT WILSON, CLS

208.656.2270

brent@tokcommercial.com

HIGHLIGHTS

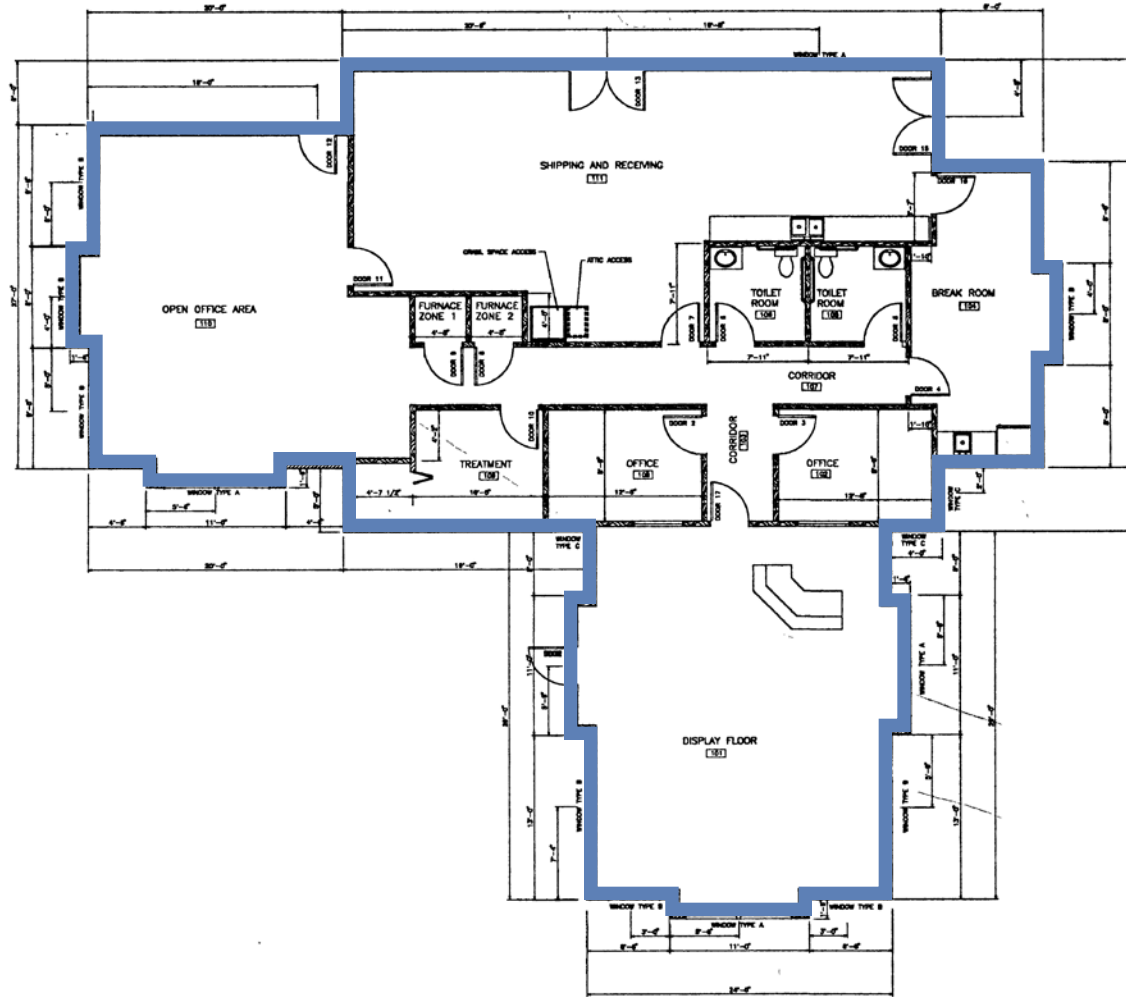


DETAILS



FLOOR PLAN

3,089 SQ. FT.



 Mountain View
Hospital



LOCATED IN IDAHO FALLS' PREMIER HOSPITAL CORRIDOR



AREA DEMOGRAPHIC SUMMARY

POPULATION

1 MI | 9,730
 3 MI | 69,412
 5 MI | 112,666

HOUSEHOLDS

1 MI | 3,626
 3 MI | 25,330
 5 MI | 40,380

AVG. HH INCOME

1 MI | \$107,597
 3 MI | \$104,213
 5 MI | \$105,474

EMPLOYEES

1 MI | 8,325
 3 MI | 21,746
 5 MI | 39,631

CORONADO ST

FIRMC
 EASTERN IDAHO
 REGIONAL MEDICAL CENTER

CHANNING WAY

PRESCRIPTION CENTER
 SPECIALTY MEDICINE

Mountain View Hospital

ROCKY MOUNTAIN
 PULMONOLOGY

Willamette
 Dental Group

SITE

CORTEZ AVE

DESOTO ST

Pediatric
 Gastroenterology
 of Idaho

TETON
 HEALTHCARE
 OF CASCADIA

MEDICAL IMAGING ASSOCIATES

IDAHO KIDNEY
 INSTITUTE LLP

S. 25TH E

SUNNYSIDE RD

TOK
 COMMERCIAL

NEAR REGIONAL RETAIL, DINING, MEDICAL & MAJOR EMPLOYERS

TOK
COMMERCIAL



THIS PROPERTY IS EXCLUSIVELY MARKED BY TOK BOISE LLC DBA TOK COMMERCIAL
This information was obtained from sources believed reliable but cannot be guaranteed. Any opinions or estimates are used for example only.