

THE WALLER EXCHANGE

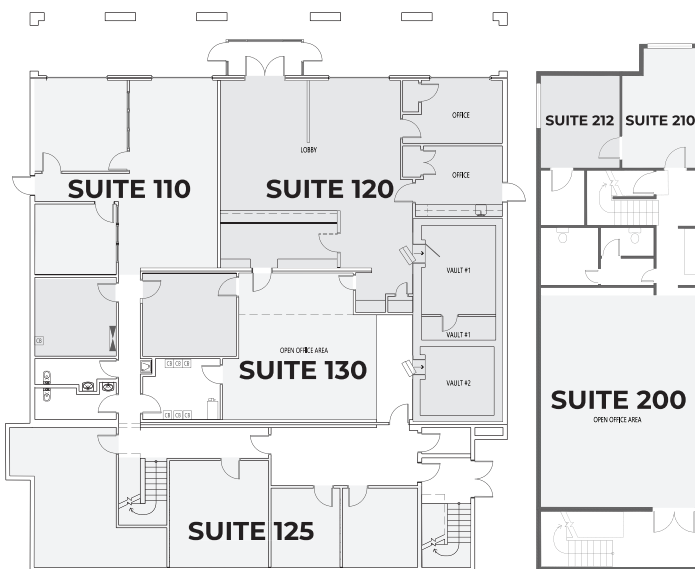
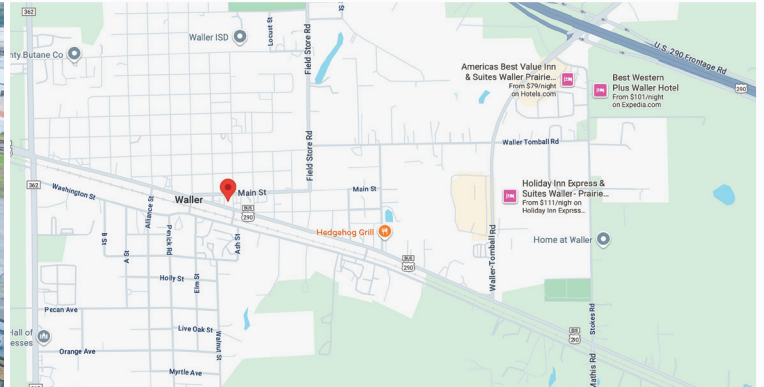


2313 MAIN ST. WALLER, TX

NOW LEASING

PROPERTY TYPE

OFFICE
SPACE



LEASE INFORMATION

TYPE: NNN

TERM: 36 MONTHS MIN.

PROPERTY HIGHLIGHTS

LOCATED ON THE CORNER OF WALLER PLAZA THE CITIES MAIN EVENT SPACE

POSITIONED OFF HEMPSTEAD RD., THE MAIN ARTERY FOR WALLER OFFERING EXCELLENT EXPOSURE WITH DAILY TRAFFIC COUNTS OF AROUND 6,000 VEHICLES

FRONTAGE ON 2 HIGH TRAFFIC ROADS OLD 290 AND MAIN ST.

LOCATED NEXT TO THE NEW FORK & FLAME FOOD TRUCK PARK

WALLER CHAMBER OF COMMERCE AT YOUR DOORSTEP

WALLER ECONOMIC DEVELOPMENT CORP AT YOUR DOORSTEP

CONTACT US IF YOU HAVE ANY QUESTIONS OR TO SCHEDULE A TOUR



936-284-5836