

2730 S. Sylvania Ave., Sturtevant, WI



**Industrial Space/Outdoor Storage Area
Available For Sublease**

Protect Realty
350 N. Milwaukee Avenue
Suite 201
Libertyville, IL 60048

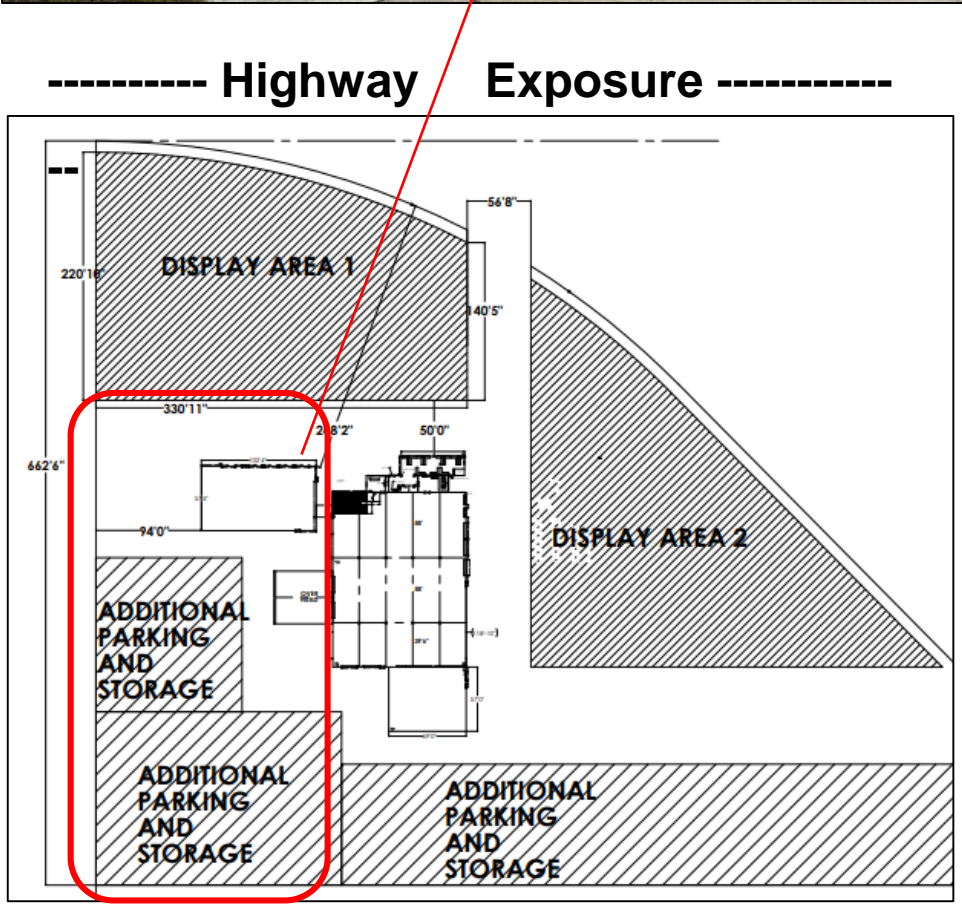
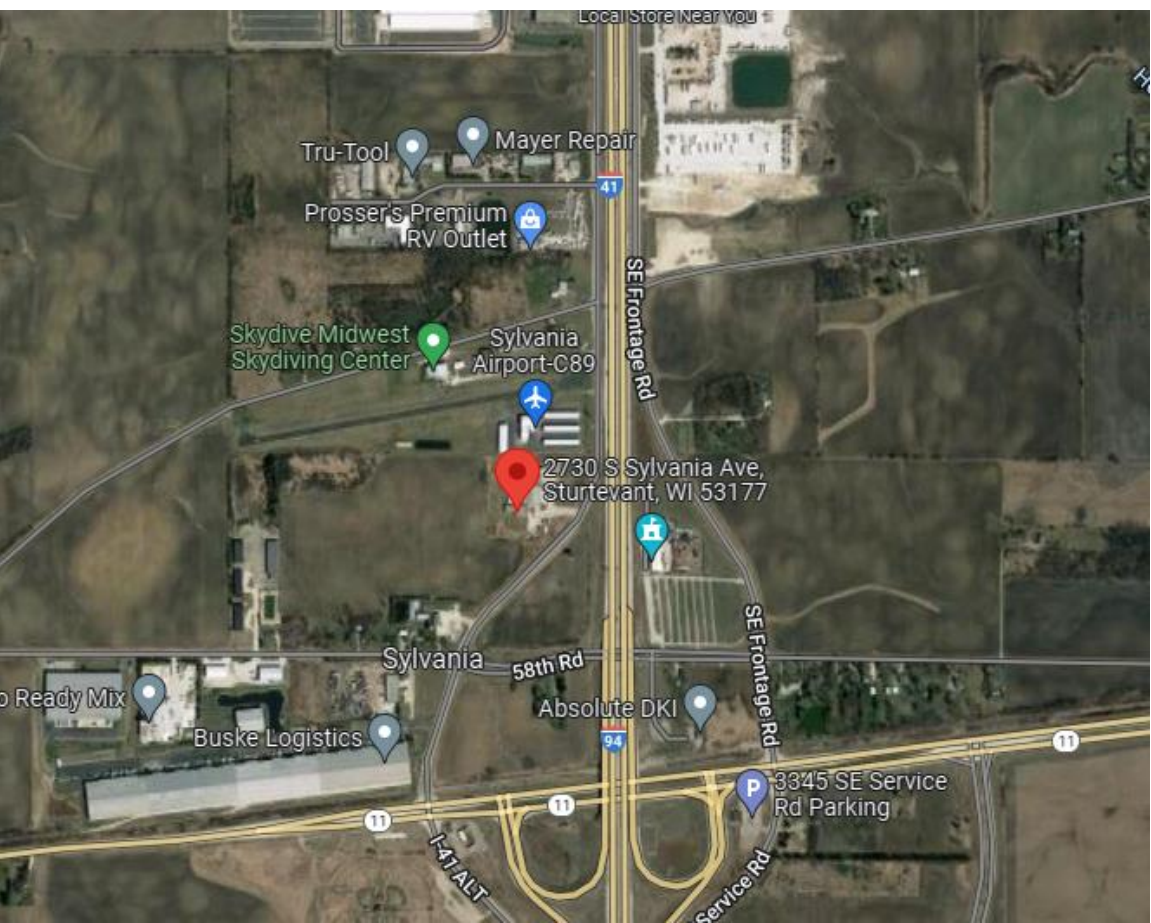
Tim Hart
Founder/Managing Broker
847 924 5864 direct
tim@protectrealty.com

Copyright © 2023 Protect Realty LLC. Information herein has been obtained from sources deemed reliable, however its accuracy cannot be guaranteed. The user is required to conduct their own due diligence and verification.

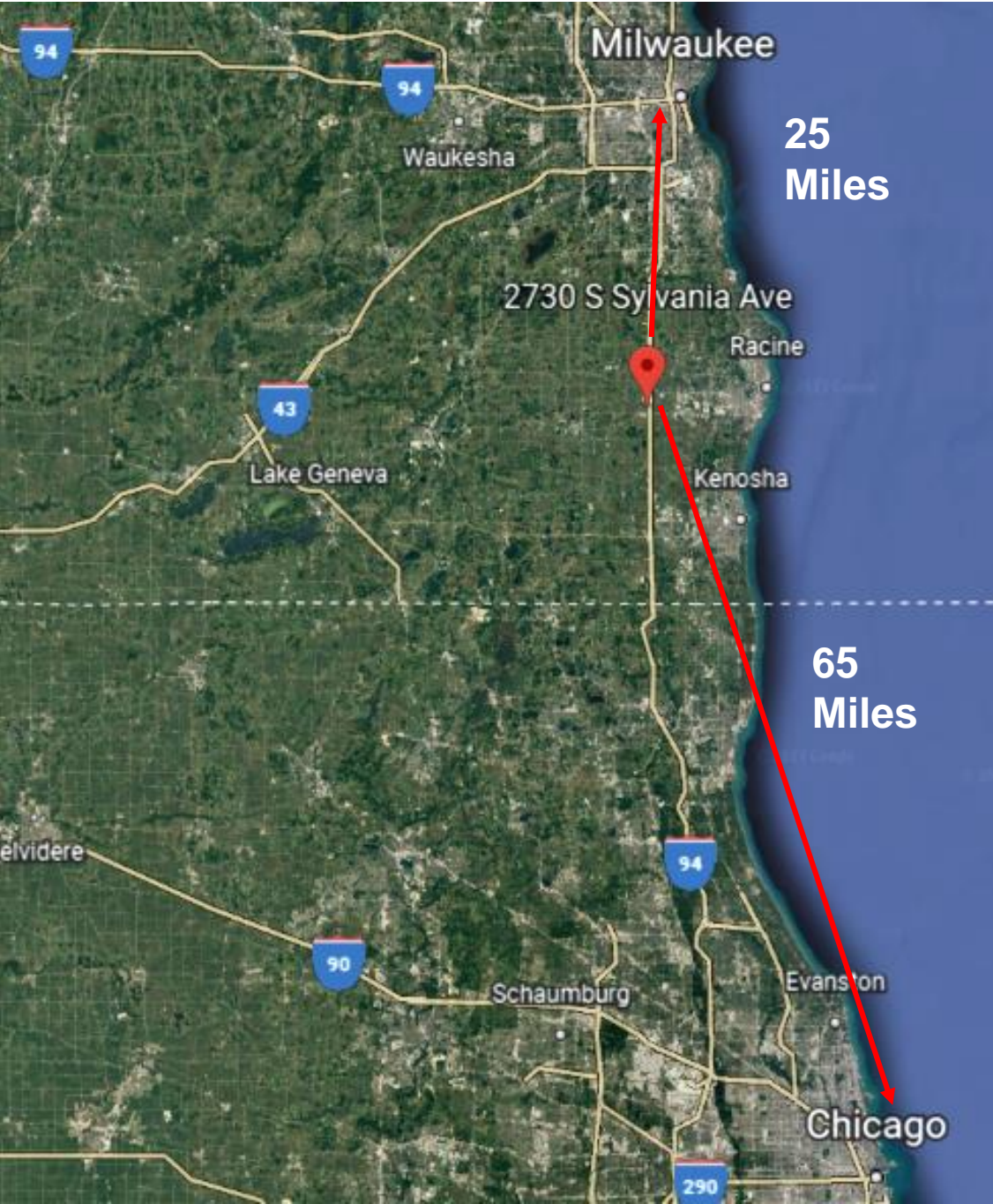
PROTECT  REALTY

www.ProtectRealty.com

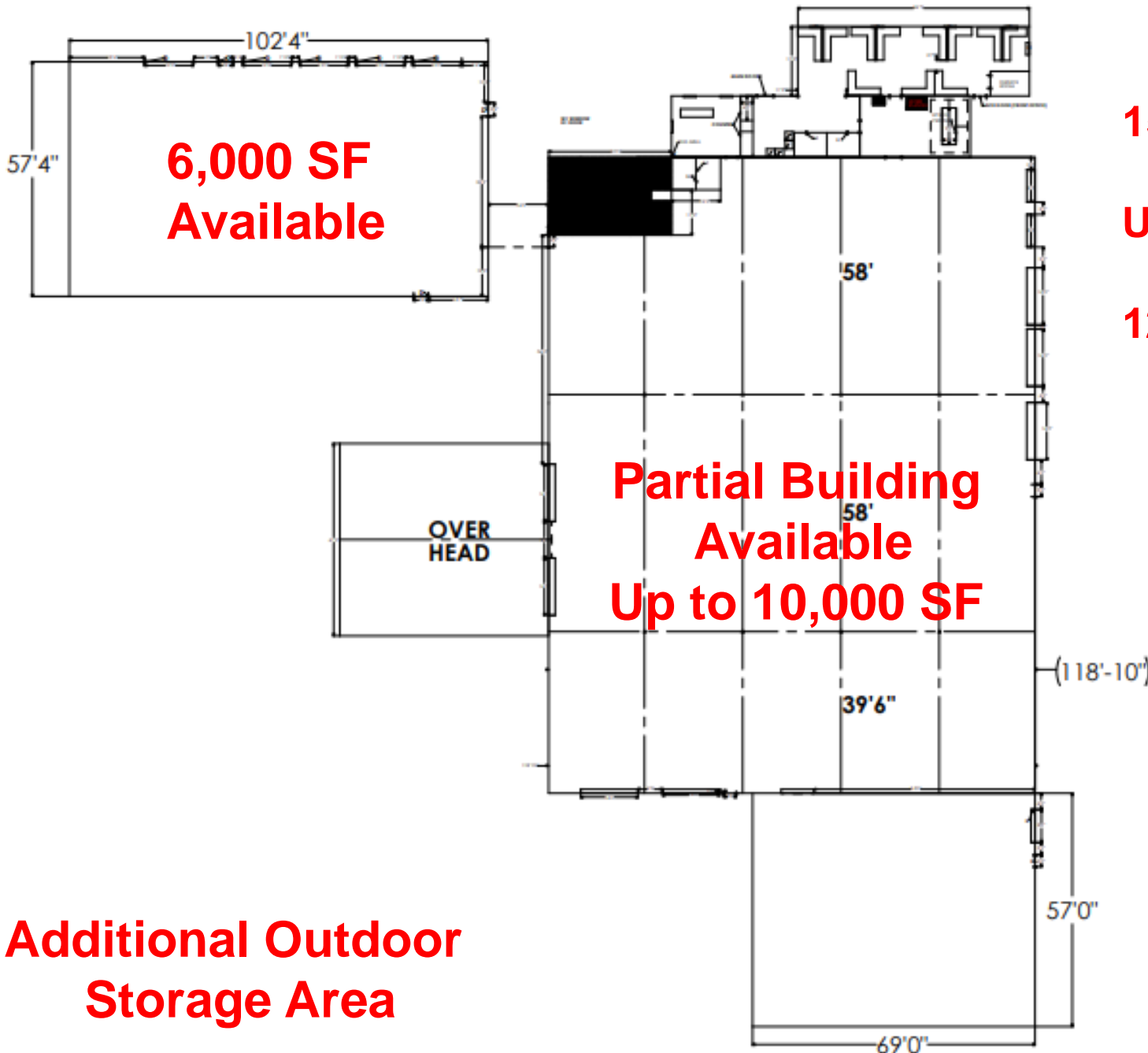
- 6,000 SF up to 15,000 SF Available
- I-94 Exposure
- Additional Outdoor Storage Area
- Frontage Road Directly Off Exit 11
- Over 100,000 Vehicles per Day Traffic
- Flexible Lease Terms



Location Overview



PROPERTY DESCRIPTION



6,000 SF Available

**Partial Building Available
Up to 10,000 SF**

15' 4" Clear Heights

Up to 21' Clear

12' x 12' Drive In Doors

Additional Outdoor Storage Area

PROPERTY PHOTOS





2730 S Sylvania Ave., Sturtevant, WI

Protect Realty
350 N. Milwaukee Avenue
Suite 201
Libertyville, IL 60048

Tim Hart
Founder/Managing Broker
847 924 5864 direct
tim@protectrealty.com

PROTECT  REALTY

www.ProtectRealty.com

Copyright © 2023 Protect Realty LLC. Information herein has been obtained from sources deemed reliable, however its accuracy cannot be guaranteed. The user is required to conduct their own due diligence and verification.